

Excellent Integrated System Limited

Stocking Distributor

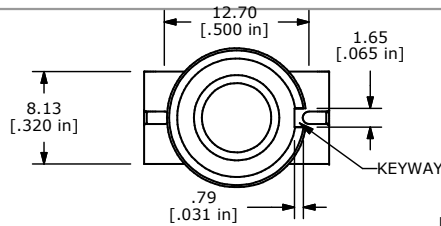
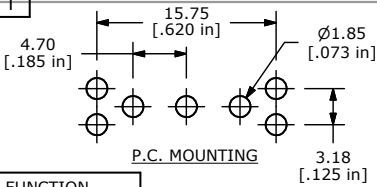
Click to view price, real time Inventory, Delivery & Lifecycle Information:

[E-Switch](#)
[100SP4T8B13VS3QEH](#)

For any questions, you can email us directly:

sales@integrated-circuit.com

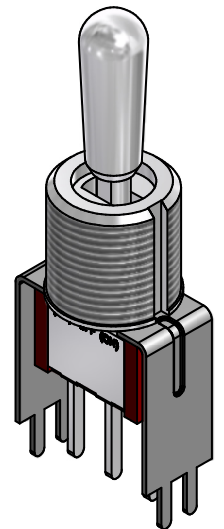
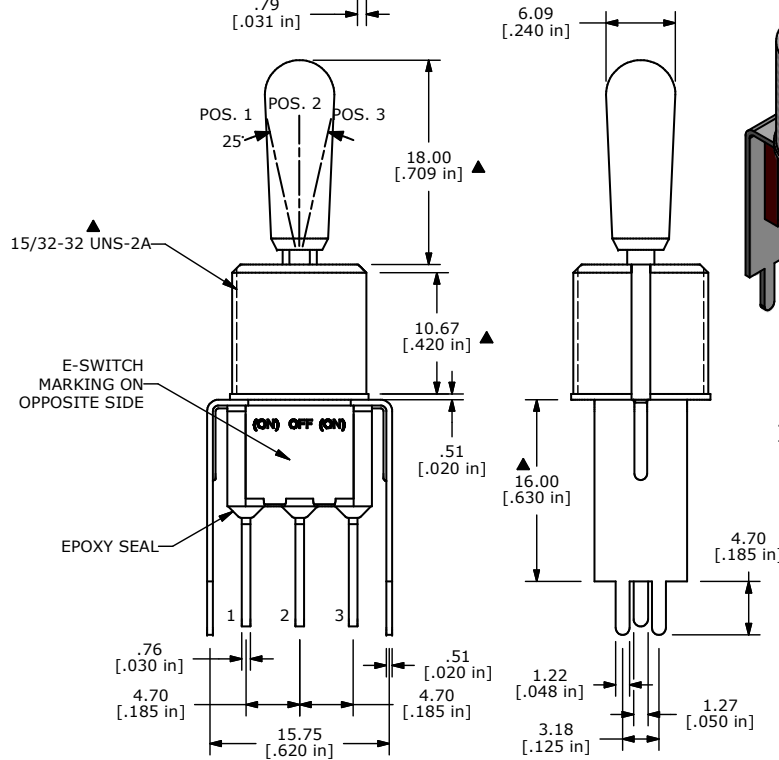
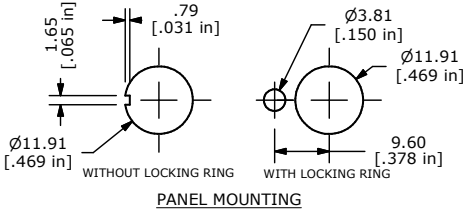
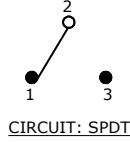
SHEET 1 OF 1



▲ SWITCH FUNCTION

POS. 1	POS. 2	POS. 3
(ON)	OFF	(ON)
2-3	OPEN	2-1

(ON)=MOMENTARY



ISOMETRIC

- NOTE:
1. ALL DIMENSIONS IN MM [INCH]
 2. GENERAL TOLERANCE: X.X=±0.4
X.XX=±0.25
 3. TERMINAL NUMBERS FOR REF ONLY
 - ▲4. PLATING MATERIAL: SILVER
 5. RATING: 5A @ 120VAC OR 28 VDC 2A @ 250 VAC
 6. ELECTRIC LIFE: 40,000 make-and-break cycles at full load.
 7. INSULATION RESISTANCE: 1,000 Mega-ohm min.
 8. DIELECTRIC STRENGTH: 1,000 V RMS @sea level.
 9. OPERATING TEMP.: -30°C to 85°C
 10. 2002/95/EC (ROHS) COMPLIANT
 11. ▲ DENOTES CRITICAL PARAMETER.
 12. HARDWARE TO BE SHIPPED BULK:
 T100012-LOCK WASHER QTY-1
 T100003-LOCK RING QTY-1
 T100004-HEX NUT QTY-2

B	21021	CORRECT PLATING AND RATING	2/12/13	EBP
A	20177	RELEASED FOR PRODUCTION	9/23/11	BGL
REV	PCR NO	DESCRIPTION	DATE	BY

THE INFORMATION CONTAINED IN THIS DOCUMENT IS PROPRIETARY TO E-SWITCH AND IS NOT TO BE COPIED OR TRANSFERRED



TITLE 100SP4T8B13VS3QE				
SCALE 2:1	DATE 9/23/2011	DR BGL	DWG ST114801	REV B