

Excellent Integrated System Limited

Stocking Distributor

Click to view price, real time Inventory, Delivery & Lifecycle Information:

[E-Switch](#)

[5000421LAMP](#)

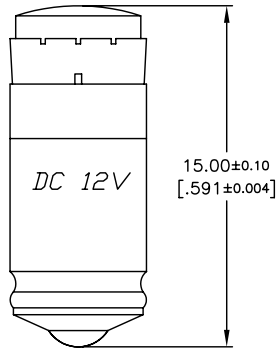
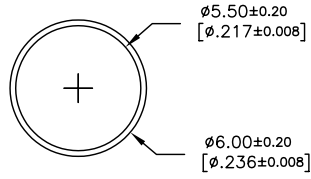
For any questions, you can email us directly:

sales@integrated-circuit.com

SHEET 1 OF 1

Ⓑ▲ YELLOW L.E.D

PARAMETERS	SYMBOL	TYP.	UNITS
AVERAGE CURRENT	I_A	10	mA
EMISSION WAVELENGTH	λ_P	523	nm
LUMINOUS INTENSITY	I_F	105	mcd



NOTES:

1. ALL DIMENSIONS IN MM
2. GENERAL TOLERANCE: X.X=±0.4
X.XX=±0.25
- ▲ 3. LED VOLTAGE: 12VDC
4. OPERATING TEMPERATURE: -20°C-60°C
5. ▲ DENOTES CRITICAL PARAMETER.

E-SWITCH®

REV.	ECN No.	DESCRIPTION	DATE	CHKD
B	14883	CHANGED L.E.D COLOR	4/28/05	JB
A	13658	RELEASED FOR PRODUCTION	12/18/03	AR

TITLE				
50-004-21				
SCALE	DATE	DR	DWG	REV
4:1	12/18/03	AR	F050421	B

THE INFORMATION CONTAINED IN THIS DOCUMENT IS PROPRIETARY TO E-SWITCH AND IS NOT TO BE COPIED OR TRANSFERRED