

## Excellent Integrated System Limited

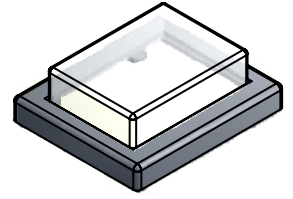
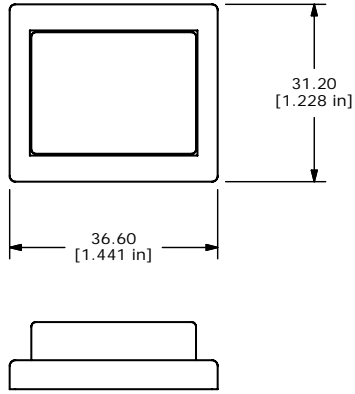
Stocking Distributor

Click to view price, real time Inventory, Delivery & Lifecycle Information:

[E-Switch](#)  
[ACC-KF05](#)

For any questions, you can email us directly:

[sales@integrated-circuit.com](mailto:sales@integrated-circuit.com)



NOTE:

1. DIMENSIONS IN MM [INCH]
2. GENERAL TOLERANCE: X.X = ± 0.4  
X.XX = ± 0.25
3. RUBBER SEAL: MVO
4. DENOTES CRITICAL PARAMETER
5. 2002/95/EC (ROHS) COMPLIANT



TITLE ACC-KF05

A	20582	NEW RELEASE	4/30/12	rc
REV	PCR NO	DESCRIPTION	DATE	BY

THE INFORMATION CONTAINED IN THIS DOCUMENT IS PROPRIETARY TO E-SWITCH AND IS NOT TO BE COPIED OR TRANSFERRED

SCALE 1:1	DATE 4/30/2012	DR RC	DWG 34-ACCKF05	REV A
--------------	-------------------	----------	-------------------	----------