

## Excellent Integrated System Limited

Stocking Distributor

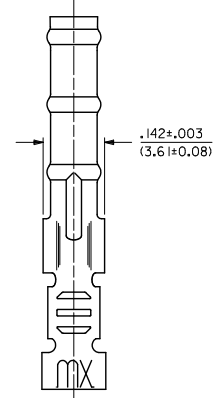
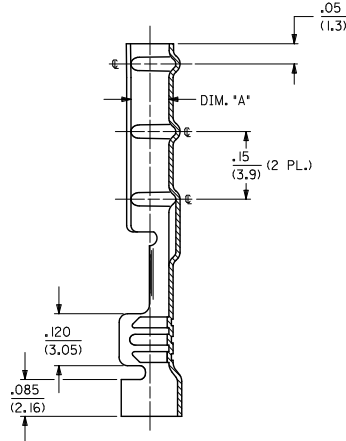
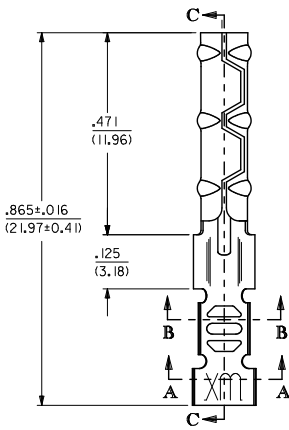
Click to view price, real time Inventory, Delivery & Lifecycle Information:

[Molex Connector Corporation](#)  
[02-08-1102](#)

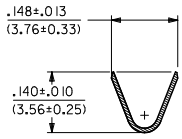
For any questions, you can email us directly:

[sales@integrated-circuit.com](mailto:sales@integrated-circuit.com)

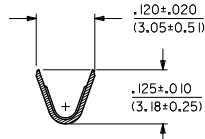
1881-2\*\*\* TERMINAL SHOWN (16-24 AWG)  
SEE SHEET 2 FOR 1881-3\*\*\* TERMINAL



**SECTION C-C**



**SECTION A-A**



**SECTION B-B**

<b>UPDATE REV. LEVELS</b> EC NO: UCP2017-3151 DRAWN: AELHAG 2011/04/11 CHKD: JBELL 2011/04/11 APPR: SMITH 2011/05/23 L2 REV	<b>QUALITY SYMBOLS</b> ▽=0 ▽=0	<b>GENERAL TOLERANCES (UNLESS SPECIFIED)</b>		<b>DIMENSION STYLE</b> IN/MM		SCALE 6:1	DESIGN UNITS INCH	THIRD ANGLE PROJECTION		
		4 PLACES ± --- ± ---	3 PLACES ± --- ± .010	2 PLACES ± 0.25 ± .014	1 PLACE ± 0.36 ± ---	DRAWN BY AELHAG	DATE 2011/04/11	TITLE CRIMP TERMINAL SOCKET, CLASPCON		
		ANGULAR ± 1/2°				CHECKED BY JBELL	DATE 2011/04/11	MOLEX INCORPORATED		
		DRAFT WHERE APPLICABLE MUST REMAIN WITHIN DIMENSIONS		SEE CHART	MATERIAL NO.	DOCUMENT NO. SD-1881-*	SHEET NO. 1 OF 2			

CHART

PART NUMBER	ENG. NUMBER	DIMENSION "A" (DIA.)	INTERLEAF PAPER OPTION	
02-08-1102	1881-2L 1A			
02-08-1101	1881-2C 1A	.085/.090		
02-08-5101	1881-2C1A-I	(2.16/2.29)	YES	
02-08-1106	1881-2L 1B			OBSOLETE
02-08-1105	1881-2C 1B	.083/.088		OBSOLETE
		(2.11/2.24)		
02-08-1104	1881-3L 1A			
02-08-1103	1881-3C 1A	.085/.090		
		(2.16/2.29)		
02-08-1107	1881-4C 1A			OBSOLETE
02-08-1108	1881-4L 1A	.085/.090		OBSOLETE
		(2.16/2.29)		

LEGEND

1881-\*\*\*-\*

CRIMP STYLE  
 2 = 16-24 AWG  
 3 = 24-30 AWG  
 4 = 22 AWG

FORM  
 L = LOOSE  
 C = CHAIN

INTERLEAF PAPER OPTION

BLANK : INTERLEAF PAPER ON FIRST FEW WRAPS ONLY.  
 I : INTERLEAF PAPER THROUGH OUT REEL.

BARREL I.D.  
 A = .085/.090 BARREL I.D.

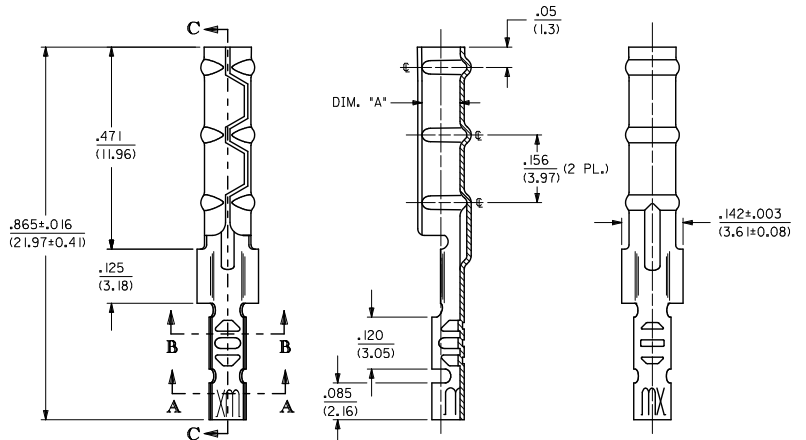
FINISH

(\*P) PRECEDING FINISH NO. DESIGNATES PREPLATED MATERIAL)  
 1 = P901 - HOT TIN DIP: .000020/(0.00051) MIN.

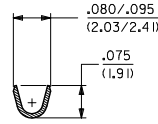
NOTES:

1. MATERIAL: CARTRIDGE BRASS
2. FINISH: SEE LEGEND
3. PRODUCT SPECIFICATION: N/A
4. PACKAGING SPECIFICATION: N/A
5. 1881 "CLASPCON" SERIES TERMINAL WITH THE STANDARD BARREL I.D. IS INTENDED FOR MATING TO .093/(2.36) DIA. P.C. BOARD PINS.
6. INITIAL EXTRACTION FORCE TO BE 4.0±1.5 LBS. FROM AN .093/.092 / (2.36/2.34) DIA. PIN AND 2 LBS. MIN. AFTER THE 10TH EXTRACTION ON STANDARD BARREL I.D.

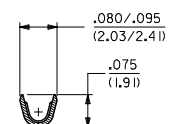
1881-3\*\*\* TERMINAL SHOWN (24-30 AWG)  
 SEE SHEET 1 FOR 1881-2\*\*\* TERMINAL



SECTION C-C



SECTION A-A



SECTION B-B

ADD P/N 02-08-5101 EC NO: UCP2011-5151 DRAWN: AELHAG 2/11/04/11 CHKD: JBELL 2/11/04/11 APPR: SMITH 2/11/05/23	QUALITY SYMBOLS ▽=0 ▽=0	GENERAL TOLERANCES (UNLESS SPECIFIED)		DIMENSION STYLE IN/MM		SCALE 6:1	DESIGN UNITS INCH	THIRD ANGLE PROJECTION	
		4 PLACES ± --- ± ---	3 PLACES ± --- ± .010	DRAWN BY AELHAG	DATE 2011/04/11	TITLE CRIMP TERMINAL SOCKET, CLASPCON			
		2 PLACES ± 0.25 ± .014	1 PLACE ± 0.36 ± ---	CHECKED BY JBELL	DATE 2011/04/11	MOLEX INCORPORATED			
		ANGULAR ± 1/2°		APPROVED BY		MATERIAL NO. SEE CHART	DOCUMENT NO. SD-1881-*	SHEET NO. 2 OF 2	
DRAFT WHERE APPLICABLE MUST REMAIN WITHIN DIMENSIONS		THIS DRAWING CONTAINS INFORMATION THAT IS PROPRIETARY TO MOLEX INCORPORATED AND SHOULD NOT BE USED WITHOUT WRITTEN PERMISSION							