

## Excellent Integrated System Limited

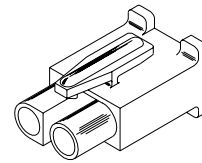
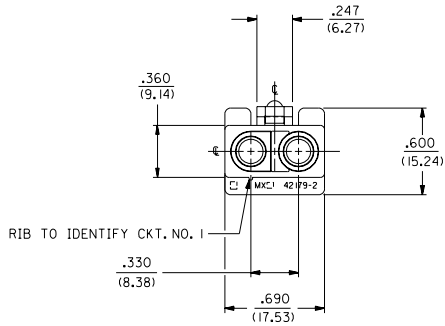
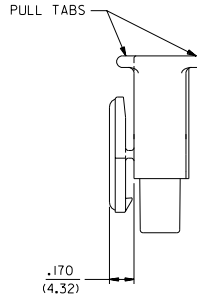
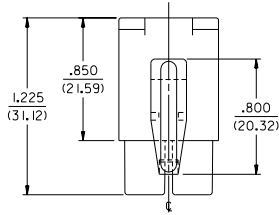
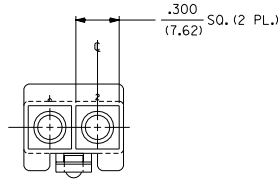
Stocking Distributor

Click to view price, real time Inventory, Delivery & Lifecycle Information:

[Molex Connector Corporation](#)  
[0003121026](#)

For any questions, you can email us directly:

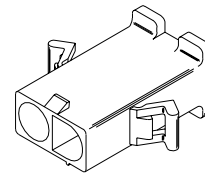
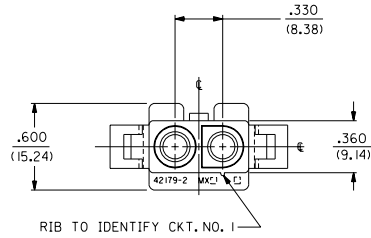
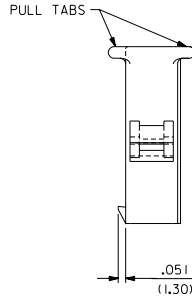
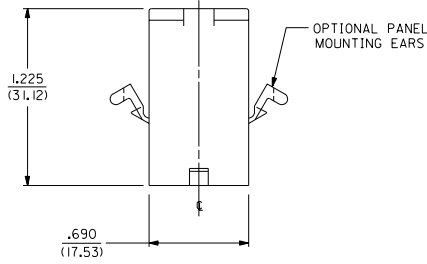
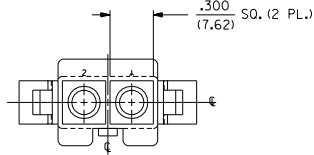
[sales@integrated-circuit.com](mailto:sales@integrated-circuit.com)



RECEPTACLE

DIMENSIONS SHOWN IN METRIC INCH UNLESS OTHERWISE SPECIFIED TOLERANCES ARE AS FOLLOWS		REVISE ONLY ON CAD SYSTEM	
3 PLACE ± .007	---	TITLE .125/(3.17) HOUSING, PLUG & RECEPTACLE, 2 CKT., .330/(8.38) CTR.	
2 PLACE ± .010	± 0.18	MOLEX INCORPORATED 1 OF 3 7/26/88	
1 PLACE ---	± 0.25	PART NO. SD-42179-2*	
DRAFT WHEN APPLICABLE MUST REMAIN WITHIN DIMENSIONS		DRAWING NO. SD-42179-2*	
DRG. BY: GEP	CHKD. BY: RW	DATE: 7/26/88	
APP'D. BY: RAS	SCALE: 2:1	FILE NAME: S421792X1.DWG	
THIS DRAWING CONTAINS INFORMATION THAT IS PROPRIETARY TO MOLEX, INC. AND SHOULD NOT BE USED WITHOUT WRITTEN PERMISSION FROM MOLEX, INC.		CP C	

H	OBsolete P/N's UCR 1988-0128 WANG 38-04-09	42179
G1	REVISED PER UCR 1988-0128 WANG 38-04-09	
G	REL. -2P IRD, -2R IRD ECN #U4 0209 RW 2-14-94	
F2	ADD -2P IRD, -2R IRD ECN #U4 0109 RW 1-25-94	
F1	REL. -2R IBK, -2PB ECN #U3 0685 RW 4-6-93	
F	DEL 94V-0 MAT'L ECN U2-1689 AFG 92-11-20 RW	
E	REVISE PER ECN U2 0211 C/C 2/10/92 RW	
D	REVISED PER ECN #000189 7-5-90 TRM	
C	REVISED LATCH ECN # U90011 KBW 03-31-89 RW	
B	REV. PICTORIALY ECN U8 2272 GEP 12-15-88 RW	
A	REV. & FINAL REL. ECN 21281 GEP 10-18-88 RW	
3	H	
2	G1	
1	H	
MFG. SH.	REV.	LTR.
REVISIONS		



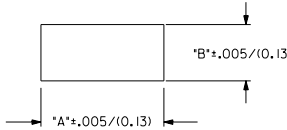
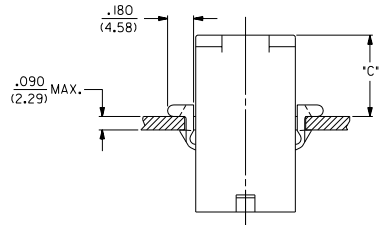
PLUG

DIMENSIONS SHOWN IN METRIC INCH UNLESS OTHERWISE SPECIFIED		TOLERANCES IN MILLIMETER ± .001		▽ = 0 ▼ = 0 REVISE ONLY ON CAD SYSTEM	
INCH		METRIC		TITLE	
3 PLACES ± .007	---			.125/(3.17) HOUSING, PLUG & RECEPTACLE, 2 CKT., .330/(8.38) CTR.	
2 PLACES ± .010	± 0.18			MOLEX INCORPORATED	
1 PLACE ---	± 0.25			L9503CAL. 50552 U.S.A.	
DRAFT WHERE APPLICABLE MUST REMAIN WITHIN DIMENSIONS				PART NO. SD-42179-2* DRAWING NO. SD-42179-2*	
DRG. BY: GEP	CHKD. BY: RW	FILE NAME: S421792A2		DATE: 7/26/88	
APP'D. BY: RAS	SCALE: 2 : 1	THIS DRAWING CONTAINS INFORMATION THAT IS PROPRIETARY TO MOLEX, INC. AND SHOULD NOT BE USED WITHOUT WRITTEN PERMISSION.		TST. BY: CP	

LTR.	REVISIONS	LTR.	REVISIONS
------	-----------	------	-----------

PLUG		
PART NO.	ENG. NO.	
03-12-2026	42179-2P1	
03-12-2025	42179-2P	
03-12-7021	42179-2PBK	OBSOLETE
03-12-7022	42179-2PIRD	OBSOLETE

RECEPTACLE		
PART NO.	ENG. NO.	
03-12-1026	42179-2R1	
03-12-6021	42179-2RIBK	OBSOLETE
03-12-6022	42179-2RIRD	OBSOLETE



RECOMMENDED HOLE CUTOUT

HOUSING	DIM. "A"	DIM. "B"	DIM. "C"
PLUG	.851/(21.62)	.440/(11.18)	.57/(14.5)

- NOTES:**
- PART ACCEPTS A MAXIMUM .250/(6.35) INSULATION DIA.
  - FOR USE WITH MOLEX .125/(3.17) DIAMETER SERIES TERMINALS EXCEPT THE 1219/1220 SERIES.
  - THIS PART IS THE SAME AS 42348-2 EXCEPT FOR POLARIZATION OF FIRST CIRCUIT.

**LEGEND:**

42179-2\*\*\*\*\*

CIRCUIT SIZE: \_\_\_\_\_

HOUSING TYPE: \_\_\_\_\_

P = PLUG

R = RECEPTACLE

MOUNTING EAR OPTION: \_\_\_\_\_

BLANK = WITH PREBENT EARS, PLUG ONLY

I = WITHOUT EARS

COLOR: \_\_\_\_\_

BLANK = 94V-2; TRANSLUCENT NATURAL COLOR

AM=AMBER BK=BLACK BU=BLUE

BN=BROWN GY=GRAY GN=GREEN

OR=ORANGE RD=RED YW=YELLOW

MATERIAL: \_\_\_\_\_

BLANK = NYLON 6/6, U.L. 94V-2

- NOTES:**
- PART ACCEPTS A MAXIMUM .250/(6.35) INSULATION DIA.
  - FOR USE WITH MOLEX .125/(3.17) DIAMETER SERIES TERMINALS EXCEPT THE 1219/1220 SERIES.
  - THIS PART IS THE SAME AS 42348-2 EXCEPT FOR POLARIZATION OF FIRST CIRCUIT.

F2	SEE SHEET I	DIMENSIONS SHOWN IN METRIC INCH UNLESS OTHERWISE SPECIFIED TOLERANCES IN MILS (IN PARENS)	▽ = 0 ▼ = 0 REVISE ONLY ON CAD SYSTEM
F1	SEE SHEET I		
F	SEE SHEET I		
D	SEE SHEET I		
H	SEE SHEET I	B	SEE SHT. I
G1	SEE SHEET I	A	SEE SHT. I
G	SEE SHEET I	I	SEE SHT. I
LTR.	REVISIONS	LTR.	REVISIONS

3 PLAGE ± .007 ---	INCH	METRIC
2 PLAGE ± .010 ± 0.18		
1 PLAGE --- ± 0.25		

DRAFT WHEN APPLICABLE MUST REMAIN WITHIN DIMENSIONS

DRG. BY: GEP CHKD. BY: RW

APP'D. BY: RAS SCALE: 2 : 1

FILE NAME: S421792X3.DWG

TITLE: .125/(3.17) HOUSING, PLUG AND RECEPTACLE, 2 CKT., .330/(8.38) CTR.

MOLEX INCORPORATED

SEE CHART

PART NO.: SD-42179-2\*

DATE: 7/26/88

THIS DRAWING CONTAINS INFORMATION THAT IS PROPRIETARY TO MOLEX, INC. AND SHOULD NOT BE USED WITHOUT WRITTEN PERMISSION.