

Excellent Integrated System Limited

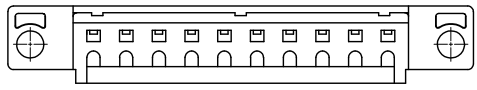
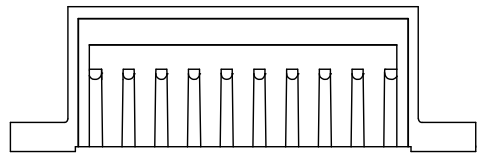
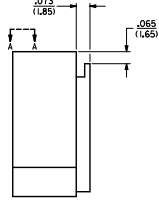
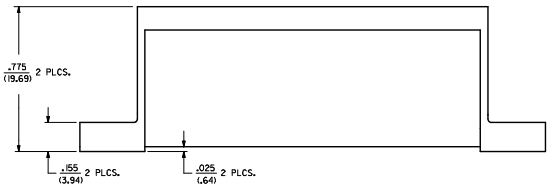
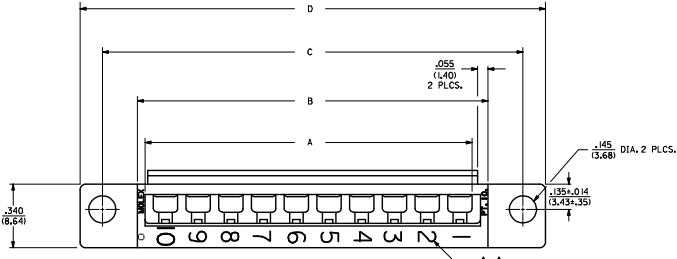
Stocking Distributor

Click to view price, real time Inventory, Delivery & Lifecycle Information:

[Molex Connector Corporation](#)
[07-01-7051](#)

For any questions, you can email us directly:

sales@integrated-circuit.com



- NOTES**
- ▲ THESE HOUSINGS ARE FOR USE WITH THE 1457- TERMINALS AND MAY BE SUBDIVIDED BY USING THE 1461-K KEY.
 - ▲ THE HOUSINGS ARE ONLY AVAILABLE IN 5, 10, 15, AND 20 CIRCUIT SIZES.
 - ▲ PRODUCT SPECIFICATION PS 50-36 APPLIES.
 - ▲ THESE HOUSINGS CONFORM TO ULL AND C.S.A. REQUIREMENTS.
 - ▲ .060/(1.52) HIGH RAISED NUMERALS.
 - ▲ .125/(3.18) HIGH RECESSED NUMERALS ON A MATTE BACKGROUND.
 - ▲ .09/(2.3) HIGH INK STAMPED NUMERALS.
 - B. PACKAGE PER PK-1461-100.

MOLEX CORE OUTS EC NO. UFP2005-2756 DRAWN BY BARBA 2005/09/29 CHECKED BY RHR 2005/10/10 APPROVED BY GWF 2005/10/12 REV. 1	QUALITY SYMBOLS ▽=0 ▽=0	GENERAL TOLERANCES (UNLESS SPECIFIED) 4 PLACES ±.005 ±.005 3 PLACES ±.005 ±.010 2 PLACES ±.025 ±.014 1 PLACE ±.035 ±. ANGULAR ±1/2°	DIMENSION STYLE IN/MM DRAWN BY DATE AFG 91/02/18 CHECKED BY DATE RHR 91/02/18 APPROVED BY DATE GWF 91/02/18	SCALE 4:1 DESIGN UNITS INCH THIRD ANGLE PROJECTION	TITLE HOUSING, COMMONING [.025/(1.64) OFFSET]
	DRAFT WHERE APPLICABLE MUST REMAIN WITHIN DIMENSIONS		MATERIAL NO. SEE TABLE	MOLEX INCORPORATED	SHEET NO. 1 OF 4
	THIS DRAWING CONTAINS INFORMATION THAT IS PROPRIETARY TO MOLEX INCORPORATED AND SHOULD NOT BE USED WITHOUT WRITTEN PERMISSION				
	DOCUMENT NO. SD-1461-x				



Distributor of Molex Connector Corporation: Excellent Integrated System Limited

Datasheet of 07-01-7051 - CONN HOUSING COMMONING 5POS

Contact us: sales@integrated-circuit.com Website: www.integrated-circuit.com

PART NO.	ENG. NO.	NO. CKTS.	DIM. A	DIM. B	DIM. C	DIM. D
07-01-7201	1461-20	20	3.50 (88.91)	3.63 (92.2)	4.00 (101.6)	4.24 (107.7)
07-01-7151	1461-15	15	2.62 (66.5)	2.75 (69.9)	3.13 (79.5)	3.37 (85.6)
07-01-7101	1461-10	10	1.750 (44.45)	1.875 (47.63)	2.250 (57.15)	2.49 (63.2)
07-01-7051	1461-5	5	.875 (22.23)	1.000 (25.40)	1.375 (34.93)	1.615 (41.02)

SPECIAL NUMBERED HOUSINGS CHART			
PART NO.	ENG. NO.	NO. CKTS.	CIRCUIT NUMERALS
07-01-7102	1461-10-1	10	11 THRU 20
07-01-7103	1461-10-2	10	21 THRU 30
07-01-7104	1461-10-3	10	31 THRU 40
07-01-7152	1461-15-1	15	16 THRU 30
07-01-7153	1461-15-2	15	31 THRU 45
07-01-7154	1461-15-3	15	46 THRU 60
07-01-7202	1461-20-1	20	21 THRU 40
07-01-7203	1461-20-2	20	41 THRU 60
07-01-7204	1461-20-3	20	61 THRU 80

INK STAMPED HOUSINGS							
BEFORE INK STAMP		AFTER INK STAMP		NO. CKTS.	DIM. A	DIM. B	DIM. C
007-01-7206	1461-20B	007-01-7207	1461-20C	20	3.50 (88.9)	3.63 (92.2)	4.00 (101.6)
007-01-7156	1461-15B	007-01-7157	1461-15C	15	2.62 (66.5)	2.75 (69.9)	3.13 (79.5)
007-01-7106	1461-10B	007-01-7107	1461-10C	10	1.750 (44.45)	1.875 (47.63)	2.250 (57.15)
007-01-7056	1461-5B	007-01-7057	1461-5C	5	.875 (22.23)	1.000 (25.40)	1.375 (34.93)

SPECIAL INK STAMPED HOUSINGS CHART							
BEFORE INK STAMP		AFTER INK STAMP		NO. CKTS.	CIRCUIT NUMERALS		
007-01-7106	1461-10B	007-01-7108	1461-10-1C	10	11 THRU 20		
		007-01-7109	1461-10-2C	10	21 THRU 30		
		007-01-7100	1461-10-3C	10	31 THRU 40		
007-01-7156	1461-15B	007-01-7158	1461-15-1C	15	16 THRU 30		
		007-01-7159	1461-15-2C	15	31 THRU 45		
		007-01-7160	1461-15-3C	15	46 THRU 60		
007-01-7206	1461-20B	007-01-7208	1461-20-1C	20	21 THRU 40		
		007-01-7209	1461-20-2C	20	41 THRU 60		
		007-01-7200	1461-20-3C	20	61 THRU 80		

REVISIONS

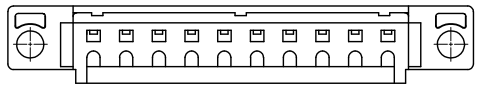
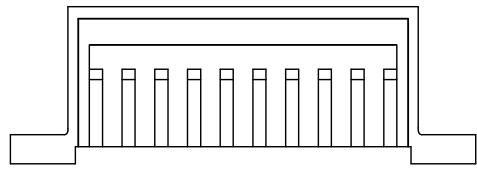
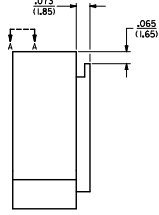
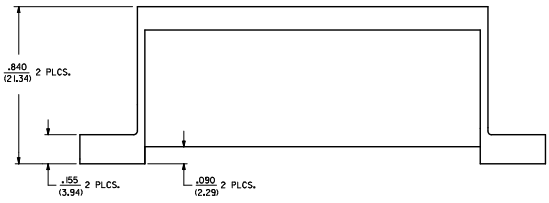
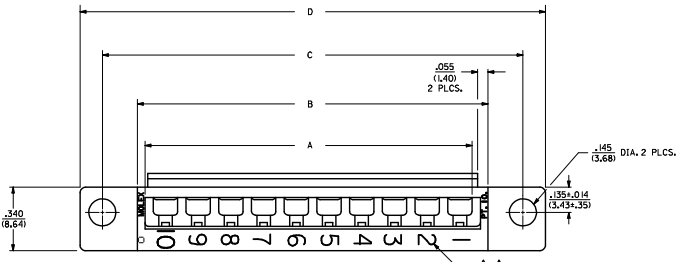
01	SEE SHEET 1
----	-------------

MOLEX INCORPORATED
HOUSING, COMMONING
[.025/(.64) OFFSET]

SD-1461-

REV. 03/22/91

20 19 18 17 16 15 14 13 12 11 10 1461 9 8 7 6 5 4 3 2 1



- NOTES**
- ▲ THESE HOUSINGS ARE FOR USE WITH THE 1457- TERMINALS AND MAY BE SUBDIVIDED BY USING THE 1461-K KEY.
 - ▲ THE HOUSINGS ARE ONLY AVAILABLE IN 5, 10, 15, AND 20 CIRCUIT SIZES.
 - ▲ PRODUCT SPECIFICATION PS 50-36 APPLIES.
 - ▲ THESE HOUSINGS CONFORM TO ULL AND C.S.A. REQUIREMENTS.
 - ▲ .060/(1.52) HIGH RAISED NUMERALS.
 - ▲ .125/(3.18) HIGH RECESSED NUMERALS ON A MATTE BACKGROUND.
 - ▲ .09/(2.3) HIGH INK STAMPED NUMERALS.

MATERIAL:
POLYESTER, UNFILLED, 94V-0,
COLOR: BLACK,
(REF. SMES I28C-D)

MOLEX MOXLEY CORR. OUTS EC NO. LFP2005-2756 O DRWINIS BARBA 2005/09/29 CHICKBANKER 2005/10/10 APPRENTICE 2005/10/12 REV.	QUALITY SYMBOLS ▽=0 ▽=0	GENERAL TOLERANCES (UNLESS SPECIFIED) 4 PLACES ±.005 ±.005 3 PLACES ±.005 ±.010 2 PLACES ±.025 ±.014 1 PLACE ±.035 ±.014 ANGULAR ±1/2°	DIMENSION STYLE IN/MM DRAWN BY DATE AFG 95/12/18 CHECKED BY DATE RHR 95/12/18 APPROVED BY DATE GWF 95/12/18	SCALE 4:1 DESIGN UNITS INCH THIRD ANGLE PROJECTION	TITLE HOUSING, COMMONING [.090/(2.29) OFFSET]	
	DRAFT WHERE APPLICABLE MUST REMAIN WITHIN DIMENSIONS		MATERIAL NO. SEE TABLE	MOXLEY MOLEX INCORPORATED	SHEET NO. 3 OF 4	
	D THIS DRAWING CONTAINS INFORMATION THAT IS PROPRIETARY TO MOLEX INCORPORATED AND SHOULD NOT BE USED WITHOUT WRITTEN PERMISSION		DOCUMENT NO. SD-1461-x			
	Rev. D 2004/04/02					

19 18 17 16 15 14 13 12 11 10 9 8 7 6 5 4 3 2 1