



Excellent Integrated System Limited

Stocking Distributor

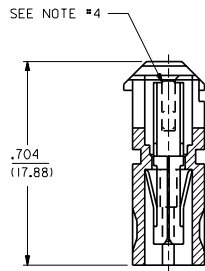
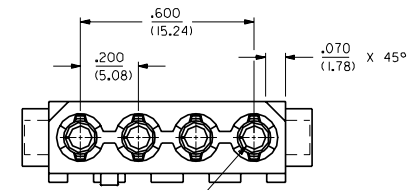
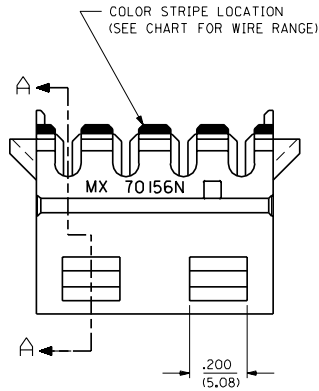
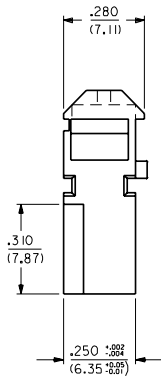
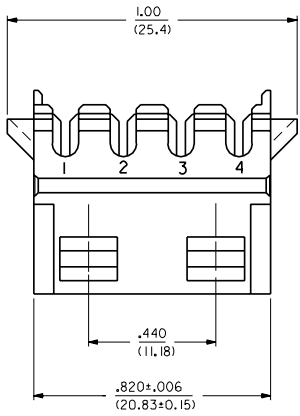
Click to view price, real time Inventory, Delivery & Lifecycle Information:

[Molex Connector Corporation](#)

[15-24-3050](#)

For any questions, you can email us directly:

sales@integrated-circuit.com

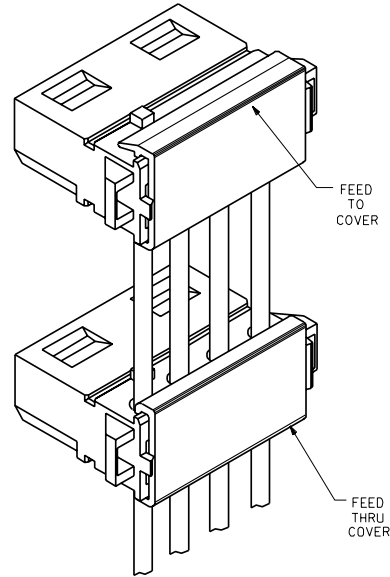


SECTION A-A

.0805±.0010 DIA.
(2.045±0.025)
(TERMINAL BARREL)

NOTES:

1. ALL WIRES TO HAVE A MAX. DIAMETER OVER INSULATION OF .095/(2.41).
2. COVERS ARE SUGGESTED TO RETAIN WIRES. FEED TO DRAWING NO. SD-70156-4000, FEED THRU DRAWING NO. SD-70156-3000. SEE SHEET 2 FOR AVAILABLE KITS.
3. MATERIAL: HOUSING-NYLON, TYPE 6/6, 94V-2, COLOR: NATURAL
HOUSING-POLYESTER, 94V-0
COLOR: WHITE
TERMINAL-PHOSPHOR BRONZE
4. .008/(0.20) MAX. VERTICAL PROJECTION DUE TO CARRIER CUT-OFF.
5. PS-70156-**** APPLIES.
6. SDES-70156 APPLIES.
7. PK-70873-0250 APPLIES.



E	TRANSFER TO INDIA ECN U21 8999-0929 SCHAFER 99/04/20
D2	ADDED PART NO. PER ECN U6-0835 02/08/96 DRS
D1	ADDED PART NO. PER ECN U8-0148 09/01/94 DRS
D	MODIFIED PER ECN U2-1589 10-28-92 DRS
C1	ADDED NOTE #7 PER ECN U2-1007 07-06-92 DRS
C	MOD. WIRE SELECTION PER ECN U2-0873 06-08-92 DRS
B	MOD. WIRE SELECTION PER ECN U2-0718 05-07-92 DRS
A	X-RELEASE PER ECN U2-0581 04-15-92 DRS

DIMENSIONS SHOWN METRIC INCH UNLESS OTHERWISE SPECIFIED TOLERANCES UNLESS OTHERWISE SPECIFIED		MFG. SH. REV. LTR. REVISIONS	
TITLE 4 CKT. POWER CONNECTOR		REVISE ONLY ON CAD SYSTEM	
MOLEX INCORPORATED SEE CHART		SHEET NO. 1 OF 2 DATE 06/30/89	
DRAWN BY: SCHMIDT/CALLER CHECKED BY: BIXLER APP'D BY: BIXLER		PART NO. SDA-70156-**** SCALE 4 : 1	
FILE NAME S1015601.DWG		THIS DRAWING CONTAINS INFORMATION THAT IS PROPRIETARY TO MOLEX INC. AND SHOULD NOT BE USED WITHOUT WRITTEN PERMISSION. CD	

						BLACK COVER			WHITE COVER		
						KIT PART NO.	KIT ENG. NO.	COVER TYPE	KIT PART NO.	KIT ENG. NO.	
J I H G F E D C B	NYLON	15-24-3000	A-70156-2003	101	YELLOW	16 AWG STRANDED, UL STYLE #1007 ONLY	15-24-3001	MS-70156-2303	FEED THRU	15-24-2035	MS-70156-2503
		15-24-3002	A-70156-2403			18 AWG STRANDED	15-24-3002	MS-70156-2403	FEED TO	15-24-2036	MS-70156-2603
		15-24-2000	A-70156-2000	101	RED	20 AWG SOLID & FUSED STRANDED	15-24-2003	MS-70156-2300	FEED THRU	15-24-2037	MS-70156-2500
		15-24-2004	A-70156-2400			20 AWG SOLID & FUSED STRANDED	15-24-2004	MS-70156-2400	FEED TO	15-24-2038	MS-70156-2600
	POLYESTER	15-24-2001	A-70156-2001	101	BLUE	20 AWG STRANDED	15-24-2005	MS-70156-2301	FEED THRU	15-24-2039	MS-70156-2501
		15-24-2006	A-70156-2401			20 AWG STRANDED	15-24-2006	MS-70156-2401	FEED TO	15-24-2044	MS-70156-2601
		15-24-2007	A-70156-2302	101	BLACK	22 AWG SOLID, FUSED STRANDED AND STRANDED	15-24-2007	MS-70156-2302	FEED THRU	15-24-2045	MS-70156-2502
		15-24-2008	A-70156-2402			22 AWG SOLID, FUSED STRANDED AND STRANDED	15-24-2008	MS-70156-2402	FEED TO	15-24-2046	MS-70156-2602
	NYLON	15-24-3053	A-70156-5003	101	YELLOW	16 AWG STRANDED, UL STYLE #1007 ONLY	15-24-3030	MS-70156-5303	FEED THRU	15-24-3009	MS-70156-5503
		15-24-3050	A-70156-5000	101	RED	18 AWG STRANDED	15-24-3031	MS-70156-5403	FEED TO	15-24-3013	MS-70156-5603
		15-24-3051	A-70156-5001	101	BLUE	20 AWG SOLID & FUSED STRANDED	15-24-3032	MS-70156-5300	FEED THRU	15-24-3014	MS-70156-5500
		15-24-3052	A-70156-5002	101	BLACK	20 AWG STRANDED	15-24-3033	MS-70156-5400	FEED TO	15-24-3015	MS-70156-5600
NYLON	NOT TOOLED	AX-70156-9003	554	YELLOW	16 AWG STRANDED, UL STYLE #1007 ONLY	15-24-3034	MS-70156-5301	FEED THRU	15-24-3016	MS-70156-5501	
	15-24-2021	A-70156-9000	554	RED	18 AWG STRANDED	15-24-3035	MS-70156-5401	FEED TO	15-24-3017	MS-70156-5601	
	NOT TOOLED	AX-70156-9001	554	BLUE	20 AWG SOLID, FUSED STRANDED AND STRANDED	15-24-3036	MS-70156-5302	FEED THRU	15-24-3018	MS-70156-5502	
	NOT TOOLED	AX-70156-9002	554	BLACK	22 AWG SOLID, FUSED STRANDED AND STRANDED	15-24-3037	MS-70156-5402	FEED TO	15-24-3019	MS-70156-5602	
NYLON	15-24-3003	A-70156-3000	101	NONE	18 AWG STRANDED	15-24-3004	MS-70156-3300	FEED THRU	15-24-3006	MS-70156-3500	
					20 AWG SOLID & FUSED STRANDED	15-24-3005	MS-70156-3400	FEED TO	15-24-3007	MS-70156-3600	

PLATING CODES:
 101 - .000100/ (.00254) MIN. TIN OVER
 .000050/ (.00127) MIN. COPPER
 554 - .000015/ (.00038) MIN. GOLD IN
 CONTACT AREA OVER .000050/ (.00127)
 MIN. NICKEL OVERALL

E SEE SHEET #1	DIMENSIONS SHOWN METRIC INCH	SCALE 1:1	REVISIONS ONLY ON CAD SYSTEM
D2 SEE SHEET #1	UNLESS OTHERWISE SPECIFIED TOLERANCES ARE AS SHOWN	UNLESS OTHERWISE SPECIFIED TOLERANCES ARE AS SHOWN	SALES ASSEMBLY
D1 SEE SHEET #1	INCH METRIC		4 CKT. POWER CONNECTOR
C1 SEE SHEET #1	PLATE # --- X ---		MOLEX INCORPORATED SHEET NO. 2 DATE 04/13/92
C SEE SHEET #1	PLATE # --- X ---		SEE CHART SDA-70156-***
B SEE SHEET #1	DRILL #, HOLE, AND CABLE MUST REMAIN WITHIN DIMENSIONS		FILE NAME 57015600
A SEE SHEET #1	SCALE N: A		THIS DRAWING CONTAINS INFORMATION THAT IS PROPRIETARY TO MOLEX INC. AND SHOULD NOT BE REPRODUCED WITHOUT PERMISSION. CD
LTR. REVISIONS	LTR. REVISIONS		