

## Excellent Integrated System Limited

Stocking Distributor

Click to view price, real time Inventory, Delivery & Lifecycle Information:

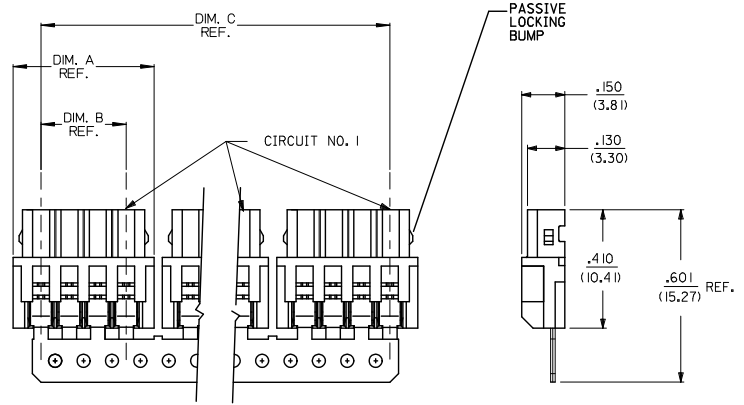
[Molex Connector Corporation](#)

[22-43-3060](#)

For any questions, you can email us directly:

[sales@integrated-circuit.com](mailto:sales@integrated-circuit.com)

DISCRETE CONN. CKT SIZE	NO OF CONN. IN CHAIN	DIM. A	DIM. B	DIM. C	PASSIVE LOCKING BUMPS
2	10	.292 (7.42)	.098 (2.50)	2.756 (70.00)	YES
3	8	.390 (9.92)	.197 (5.00)	2.953 (75.00)	YES
4	6	.489 (12.42)	.295 (7.50)	2.756 (70.00)	YES
5	5	.587 (14.92)	.394 (10.00)	2.756 (70.00)	YES
6	4	.685 (17.40)	.492 (12.50)	2.556 (65.00)	YES
7	4	.783 (19.90)	.591 (15.00)	2.952 (75.00)	YES
8	3	.882 (22.40)	.689 (17.50)	2.461 (62.50)	YES
9	3	.980 (24.90)	.787 (20.00)	2.756 (70.00)	NO
10	2	1.079 (27.40)	.886 (22.50)	1.969 (50.00)	NO
11	2	1.177 (29.90)	.984 (25.00)	2.165 (55.00)	NO
12	2	1.276 (32.40)	1.082 (27.50)	2.362 (60.00)	NO
13	2	1.374 (34.90)	1.181 (30.00)	2.559 (65.00)	NO
14	2	1.472 (37.40)	1.279 (32.50)	2.756 (70.00)	NO
15	2	1.571 (39.90)	1.378 (35.00)	2.952 (75.00)	NO



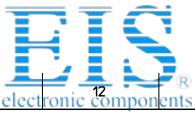
- NOTES:
- MATERIAL:  
HOUSING: GLASS-FILLED POLYESTER (PBT), 94V-0. COLOR: NATURAL (WHITE)  
TERMINAL: PHOS. BRONZE
  - FINISH:  
(P909) OVERALL HOT TIN DIP: .000100/0.00254 MIN.
  - FOR PRODUCT SPEC'S SEE PS-42219-0001
  - PACKAGING SPECIFICATION: SEE LENGEND
  - THE WIRE TERMINATION SPEC IS SMES-42219-0002.
  - THIS PART CONFORMS TO CLASS B REQUIREMENTS OF COSMETIC SPECIFICATION PS-45499-002.

42219-N\*\*\*  
 NO OF CKTS ————  
 HOUSING COLOR ————  
 A = (NATURAL)

PACKAGING SPEC.  
 BLANK = PK-70873-0140 (LARGE BOX)

TERMINAL  
 BLANK = 42218

REMOVE COLOR OPT. EC NO: UCP2014-2716 DRAWN BY: DRW/KIT/PER 2014/01/09 CHKD: BELL 2014/01/09 APPR: SMITH 2014/01/13	QUALITY SYMBOLS ▽=0 ▽=0 ▽=0	GENERAL TOLERANCES (UNLESS SPECIFIED)		DIMENSION STYLE IN/MM		SCALE 4:1	DESIGN UNITS METRIC	THIRD ANGLE PROJECTION			
		4 PLACES ± --- ± ---	3 PLACES ± --- ± .010	2 PLACES ± 0.25 ± .014	1 PLACE ± 0.36 ± ---	0 PLACE ± --- ± ---	ANGULAR ± 1/2°	DRAFT WHERE APPLICABLE MUST REMAIN WITHIN DIMENSIONS	SEE CHART	MATERIAL NO.	DOCUMENT NO.
J2	REV					2.5MM I.D.T. CONNECTOR ASSEMBLY		molex	SDA-42219-*	1 OF 2	
THIS DRAWING CONTAINS INFORMATION THAT IS PROPRIETARY TO MOLEX INCORPORATED AND SHOULD NOT BE USED WITHOUT WRITTEN PERMISSION											



Distributor of Molex Connector Corporation: Excellent Integrated System Limited

Datasheet of 22-43-3060 - CONN RCPT ASSY IDT 6POS 2.5MM

Contact us: sales@integrated-circuit.com Website: www.integrated-circuit.com

A-42219-NA	
PART NO.	ENG. NO.
22-43-3020	A-42219-2A
22-43-3030	A-42219-3A
22-43-3040	A-42219-4A
22-43-3050	A-42219-5A
22-43-3060	A-42219-6A
22-43-3070	A-42219-7A
22-43-3080	A-42219-8A
22-43-3090	A-42219-9A
22-43-3100	A-42219-10A
22-43-3110	A-42219-11A
22-43-3120	A-42219-12A
22-43-3130	A-42219-13A
22-43-3140	A-42219-14A
22-43-3150	A-42219-15A

SEE SHEET 1 EC NO: UCP2014-2718 DRAWN BY: DRW:KTP/PER 2014/01/03 CHECKED BY: CHK:J.BELL 2014/01/03 APPROVED BY: APP:R.SMITH 2014/01/13 J2 REV	QUALITY SYMBOLS ▽=0 ▽=0 ▽=0 DESCRIPTION	GENERAL TOLERANCES (UNLESS SPECIFIED)		DIMENSION STYLE IN/MM		SCALE ---	DESIGN UNITS METRIC	THIRD ANGLE PROJECTION	
				DRAWN BY AG	DATE 1989/02/06	TITLE 2.5MM I.D.T. CONNECTOR ASSEMBLY  <b>molex</b>  MATERIAL NO. SEE CHART DOCUMENT NO. SDA-42219-* SHEET NO. 2 OF 2			
				CHECKED BY RE	DATE 1989/02/06				
				APPROVED BY F.SMITH	DATE 2014/01/13				
				ANGULAR ±1/2°		DRAFT WHERE APPLICABLE MUST REMAIN WITHIN DIMENSIONS SIZE C THIS DRAWING CONTAINS INFORMATION THAT IS PROPRIETARY TO MOLEX INCORPORATED AND SHOULD NOT BE USED WITHOUT WRITTEN PERMISSION			