

## **Excellent Integrated System Limited**

Stocking Distributor

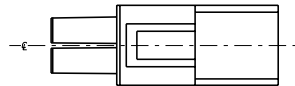
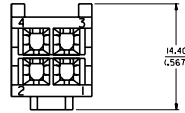
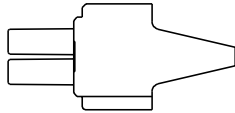
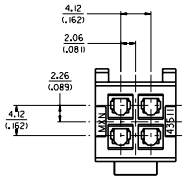
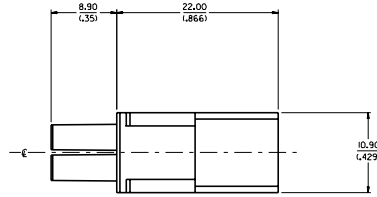
Click to view price, real time Inventory, Delivery & Lifecycle Information:

[Molex Connector Corporation](#)  
[43511-0001](#)

For any questions, you can email us directly:  
[sales@integrated-circuit.com](mailto:sales@integrated-circuit.com)

NOTES:

1. MATERIAL: POLYESTER (PBT), UN-FILLED, UL 94V-0, COLOR: BLACK
2. FINISH: NONE
3. PRODUCT SPEC: PS-43510-002
4. ALL DIMENSIONS SHOWN FOR REFERENCE ONLY.
5. USES STANDARD 5556 AND 44485 MINI-FIT JR, FEMALE CRIMP TERMINALS.
6. PART MATES WITH 43514-0001 PLUG POD.
7. PART TO BE USED WITH 43838-0\*\*\* RECEPTACLE SHROUD. (SEE SHROUD DRAWING FOR ASSEMBLY INFORMATION)



MOLEX LEAD-INS IC: MOLEX 1899-0094 DATE: 9/10/06 DRAWN: COMERCIAL 9/10/06 APPROVED: COMERCIAL 9/10/06	QUALITY SYMBOLS VALUER: 0 CRITICAL: 0	GENERAL TOLERANCES: UNLESS SPECIFIED: DIM INCH 4 PLACES +0,--- ±,--- 3 PLACES +0,--- ±,--- 2 PLACES +0,--- ±,--- 1 PLACE +0,--- ±,--- ANGULAR: # 0	SCALE: 4:1 DESIGN UNITS: DIM INCH DRAWN BY & DATE: COMERCIAL 9/10/06 CHECKED BY & DATE: COMERCIAL 9/10/06 APPROVED BY & DATE: FRY 9/10/06	DIMENSIONS: DIM INCH DIM INCH DIM INCH THIRD ANGLE PROJECTION TITLE: MINI FIT JR, RECEPTACLE, 4 CIRCUIT, DUAL ROW COMPODRE SYSTEM MOLEX INCORPORATED	SHEET NO. 1 OF 1 SIZE D
	DRAFT WHERE APPLICABLE MUST REMAIN WITHIN DIMENSIONS	CAD FILENAME: S4351101.DGN MATERIAL NO.: 43511-0001 DRAWING NO.: SD-43511-001	THIS DRAWING CONTAINS INFORMATION THAT IS PROPRIETARY TO MOLEX INCORPORATED AND SHOULD NOT BE USED WITHOUT WRITTEN PERMISSION.	REVISIONS ON CAD ONLY	