

Excellent Integrated System Limited

Stocking Distributor

Click to view price, real time Inventory, Delivery & Lifecycle Information:

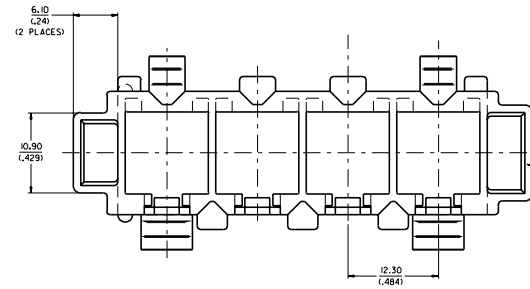
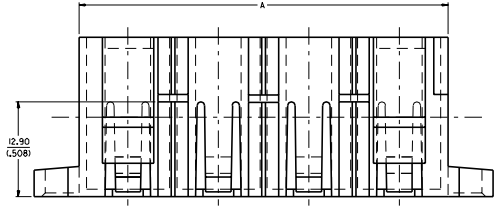
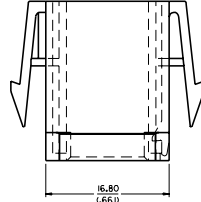
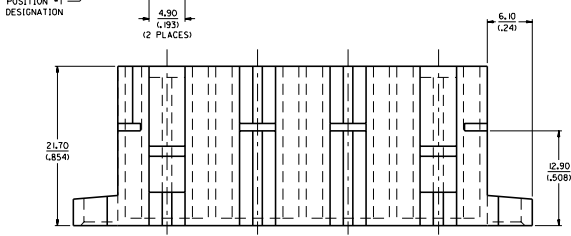
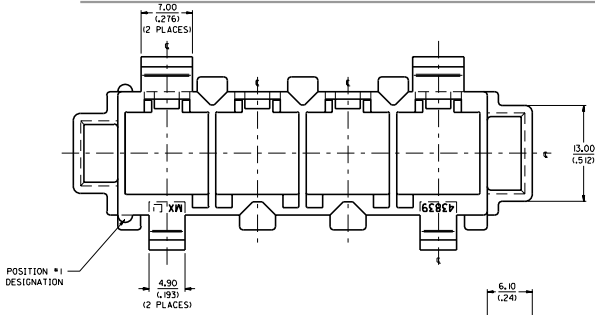
[Molex Connector Corporation](#)
[43839-0501](#)

For any questions, you can email us directly:

sales@integrated-circuit.com

NOTES:

1. MATERIAL: POLYESTER (PBT), 7.5% GLASS FILLED, UL 94V-D. COLOR: BLACK
2. FINISH: NONE
3. PRODUCT SPEC.: PS-43510-002
4. ALL DIMENSIONS SHOWN FOR REFERENCE ONLY.
5. PART TO BE USED WITH PODS SHOWN IN CHART. SEE SHEET 2 FOR ASSEMBLY INFORMATION.
6. PODS MAY BE PLACED IN ANY POSITION DESIRED.
7. FOR RECOMMENDED PANEL OPENING, SEE SHEET 2.
8. PART MATES WITH 43838-0*** RECEPTACLE SHROUD.
9. MATED CONNECTOR ASSEMBLIES MUST BE UNMATED WITH A STRAIGHT PULL IN THE DIRECTION SHOWN TO PREVENT DAMAGE, AVOID ROTATING ASSEMBLIES DURING UNMATING.
10. SEE SHEET 2 FOR APPLICATION NOTES.



LATCHING AREA IS KEYS TO PREVENT IMPROPER MATING.

MATERIAL NO.	POSITIONS	DIM. 'A'
43839-0601	6	74.80 (2.945)
43839-0501	5	62.50 (2.461)
43839-0401	4	50.20 (1.976)
43839-0301	3	37.90 (1.492)
43839-0201	2	25.60 (1.007)

MATERIAL NO.	DESCRIPTION
43516-0001	BLIND-MATE POD
43515-0001	6 CIRCUIT MICRO-FIT PLUG
43514-0001	4 CIRCUIT MINI-FIT JR. PLUG
43513-0001	1 CIRCUIT MINI-FIT SR. PLUG
AVAILABLE PODS	

REV.	DESCRIPTION
B	REVISED PANEL OPENING (IC NO. 43839-0502) (DATE: 00/02/02) (APP'D: COMERCIAL 000202)

QUALITY SYMBOLS	GENERAL TOLERANCES UNLESS SPECIFIED	SCALE	DESIGN UNITS
VALUOR	FRONT VIEW	1:1	MM
CRITICAL	3 PLACES		
	2 PLACES		
	1 PLACE		
	ANGULAR: ± 0		

TITLE: **PANEL MOUNT PLUG SHROUD, 12.3 mm (1.484) PITCH, COMPODRE SYSTEM**
 MOLEX INCORPORATED
 CAD FILENAME: 4383901.DGN
 MATERIAL NO.: SD-43839-001
 DRAWING NO.:
 SHEET NO.: 1 OF 2
 SIZE: D

