

## **Excellent Integrated System Limited**

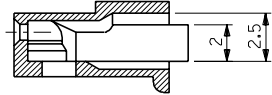
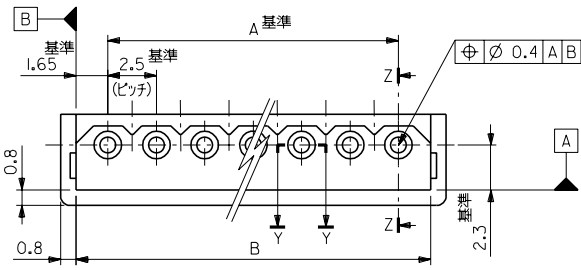
Stocking Distributor

Click to view price, real time Inventory, Delivery & Lifecycle Information:

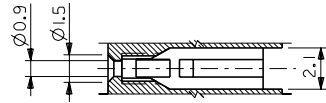
[Molex Connector Corporation](#)  
[0050375133](#)

For any questions, you can email us directly:  
[sales@integrated-circuit.com](mailto:sales@integrated-circuit.com)

ENG. NO. SD-5264-N  
EDP NO. 50-37-5\*\*3  
DIMENSIONS IN METRIC DO NOT SCALE DRAWING

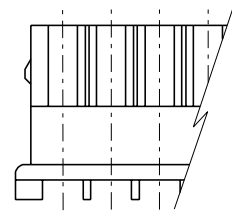
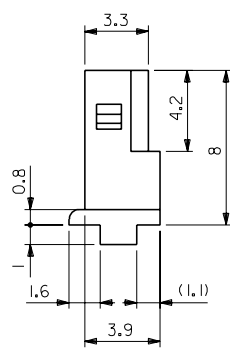
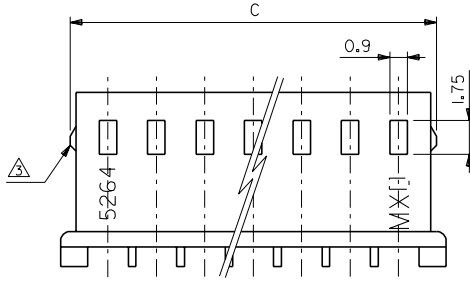


断面 Z-Z

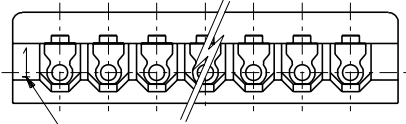


断面 Y-Y

注記:  
1. 適合端子: 5263PBT  
2. 嵌合相手: 5267シリーズ, 5268シリーズ  
△ 9極以上はロックなし。



	38.3	35	50-37-5153	5264-15	15	
	35.8	32.5	-5143	-14	14	
	33.3	30	-5133	-13	13	
	30.8	27.5	-5123	-12	12	
	28.3	25	-5113	-11	11	
	25.8	22.5	-5103	-10	10	
	23.3	20	-5093	-09	9	
	21.4	20.8	17.5	-5083	-08	8
	18.9	18.3	15	-5073	-07	7
	16.4	15.8	12.5	-5063	-06	6
	13.9	13.3	10	-5053	-05	5
	11.4	10.8	7.5	-5043	-04	4
	8.9	8.3	5	-5033	-03	3
	6.4	5.8	2.5	50-37-5023	5264-02	2
C	B	A	EDP NO.	ENG.NO.	極数	



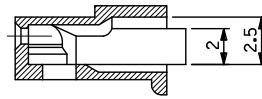
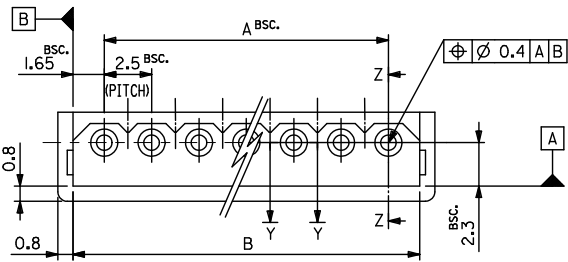
CIRCUIT NO.

角度 ANGLE	±3°				
30以上 OVER	+0.3				
10以上 30未満 UNDER	+0.25	H	再作図及び変更	J10590	K-1
10未満 UNDER	+0.2	記号	変更内容	DR. CHK.	日付
一般公差 GENERAL TOLERANCES		REVISION RECORD			

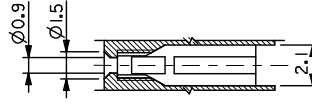
材料 MATERIAL	66ナイロン UL94V-0	MOLEX-JAPAN CO.,LTD. 日本モレックス株式会社
仕上げ FINISH	—	EDP. NO. 50-37-5**3
適用電線範囲 WIRE RANGE	—	ENG. NO. SD-5264-N
被覆外径 INS. RANGE	—	REV. H
DRAWN BY	CHK'D BY	TITLE 名称
K.T.OJID '91/7/26	M.FUKUSHIMA '91/07/30	2.5 LOW PROFILE RECEPTACLE HOUSING
APP'D BY	尺度 SCALE	
M.ENOMOTO	5-1	

THIS DRAWING CONTAINS INFORMATION THAT IS PROPRIETARY TO MOLEX(JAPAN) AND SHOULD NOT BE USED WITHOUT WRITTEN PERMISSION  
本図面は日本モレックス(株)の所有する情報を含むもので 当社の許可なく複製を禁止する。 MXJ-8

10 9 8 7 6 5 4 3 2 1

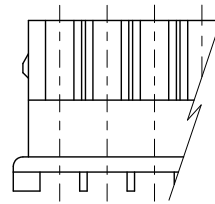
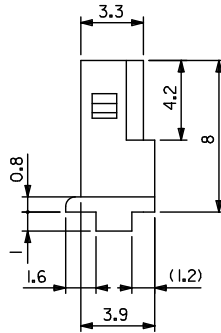
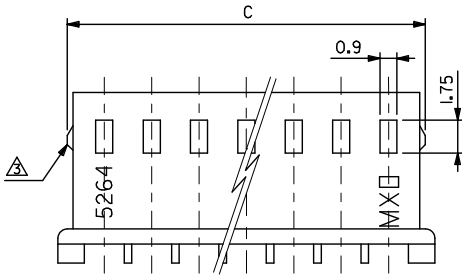


SECT.Z-Z



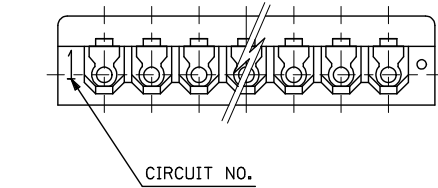
SECT.Y-Y

- NOTES:  
1. SUITABLE TERMINAL : 5263SERIES  
2. MATES WITH : 5267SERIES,5268SERIES  
3. 9 CIRCUITS OR MORE WITHOUT LOOK.



	48.3	45	50-37-5193	5264-19	19	
	43.3	40	-5173	-17	17	
	38.3	35	-5153	-15	15	
	35.8	32.5	-5143	-14	14	
	33.3	30	-5133	-13	13	
	30.8	27.5	-5123	-12	12	
	28.3	25	-5113	-11	11	
	25.8	22.5	-5103	-10	10	
	23.3	20	-5093	-09	9	
	21.4	20.8	17.5	-5083	-08	8
	18.9	18.3	15	-5073	-07	7
	16.4	15.8	12.5	-5063	-06	6
	13.9	13.3	10	-5053	-05	5
	11.4	10.8	7.5	-5043	-04	4
	8.9	8.3	5	-5033	-03	3
	6.4	5.8	2.5	50-37-5023	5264-02	2

MATERIAL:  
66 NYLON, UL94V-0



PART NUMBERS VOIDED EC NO. J2016-1314 DRAWING CHYK: 2016/06/29 APPR: Y0110 2016/07/08	GENERAL TOLERANCES (UNLESS SPECIFIED)		DIMENSION STYLE MM ONLY		SCALE 5:1	DESIGN UNITS METRIC	THIRD ANGLE PROJECTION
	0.25 UNDER	±0.03	DRAWN BY	DATE	TITLE		
	0.25 OVER 0.5 UNDER	±0.05	K. TOJO	1991/11/05	2.5 LOW PROFILE RECEPTACLE HOUSING		
	0.5 OVER 1.0 UNDER	±0.1	CHECKED BY	DATE			
1.0 OVER 10 UNDER	±0.3	M. FUKUSHIMA	1992/01/15	DOCUMENT NO.			
10 OVER 30 UNDER	±0.25	APPROVED BY	DATE	SD-5264-N			
30 OVER	±0.2	M. ENOMOTO	1992/01/15	SHEET NO.			
ANGULAR ±3 °		MATERIAL NO.		1 OF 1			
DRAFT WHERE APPLICABLE MUST REMAIN WITHIN DIMENSIONS		SEE CHART		THIS DRAWING CONTAINS INFORMATION THAT IS PROPRIETARY TO MOLEX ELECTRONIC TECHNOLOGIES, LLC AND SHOULD NOT BE USED WITHOUT WRITTEN PERMISSION			

9 8 7 6 5 4 3 2 1