

Excellent Integrated System Limited

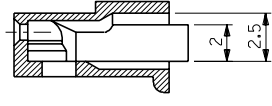
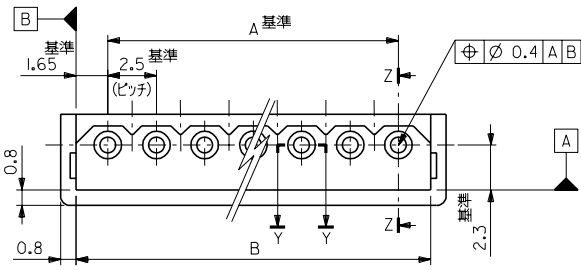
Stocking Distributor

Click to view price, real time Inventory, Delivery & Lifecycle Information:

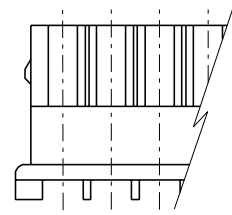
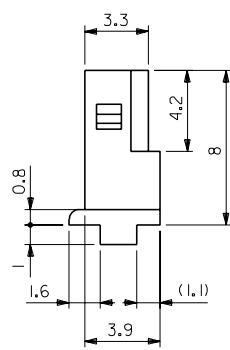
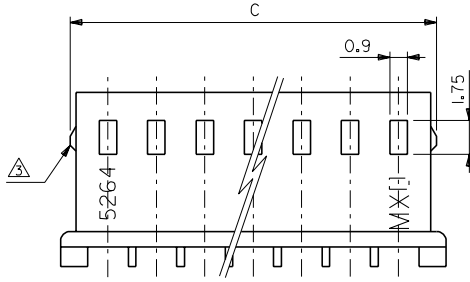
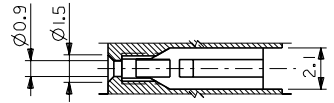
[Molex Connector Corporation](#)
[50-37-5143](#)

For any questions, you can email us directly:
sales@integrated-circuit.com

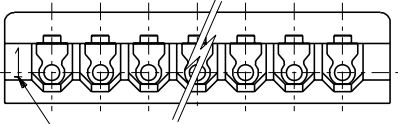
EDP NO. 50-37-5**3
ENG. NO. SD-5264-N
DIMENSIONS IN METRIC DO NOT SCALE DRAWING



注記:
1. 適合端子: 5263PBT
2. 嵌合相手: 5267シリーズ, 5268シリーズ
△ 9極以上はロックなし。



	38.3	35	50-37-5153	5264-15	15
	35.8	32.5	-5143	-14	14
	33.3	30	-5133	-13	13
	30.8	27.5	-5123	-12	12
	28.3	25	-5113	-11	11
	25.8	22.5	-5103	-10	10
	23.3	20	-5093	-09	9
	21.4	20.8	-5083	-08	8
	18.9	18.3	-5073	-07	7
	16.4	15.8	-5063	-06	6
	13.9	13.3	-5053	-05	5
	11.4	10.8	-5043	-04	4
	8.9	8.3	-5033	-03	3
	6.4	5.8	50-37-5023	5264-02	2
C	B	A	EDP NO.	ENG.NO.	極数



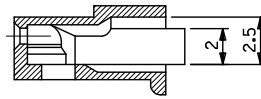
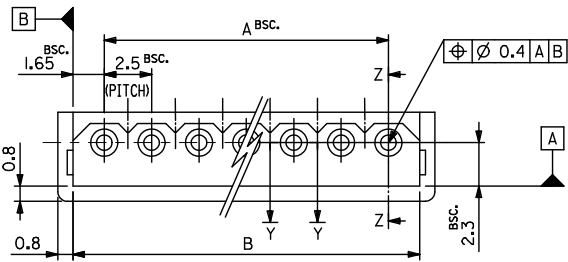
CIRCUIT NO.

材料 MATERIAL 66ナイロン UL94V-0	MOLEX-JAPAN CO.,LTD. 日本モレックス株式会社
仕上げ FINISH	EDP. NO. 50-37-5**3
適用電線範囲 WIRE RANGE	ENG. NO. SD-5264-N
被覆外径 INS. RANGE	REV H
DRAWN BY K.T.OJID '91/7/26	CHK'D BY '91/07/30 M.FUKUSHIMA
APP'D BY '91/07/30 M.ENOMOTO	TITLE 名称 2.5 LOW PROFILE RECEPTACLE HOUSING

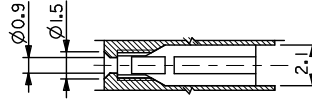
角度 ANGLE	±3°			
30以上 OVER	+0.3			
10以上 30未満 UNDER	+0.25	H	再作図及び変更 J10590/K-1	91/7/26
10未満 UNDER	+0.2	記号	変更内容	DR. CHK. DATE
一般公差		REVISION RECORD		
GENERAL TOLERANCES		REVISE ONLY ON CAD SYSTEM		

THIS DRAWING CONTAINS INFORMATION THAT IS PROPRIETARY TO MOLEX(JAPAN) AND SHOULD NOT BE USED WITHOUT WRITTEN PERMISSION
本図面は日本モレックス(株)の所有する情報を含むもので 当社の許可なく複製を禁止する。 MXJ-8

10 9 8 7 6 5 4 3 2 1

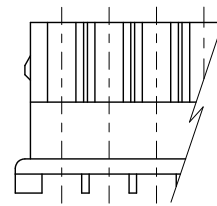
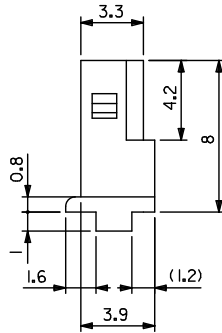
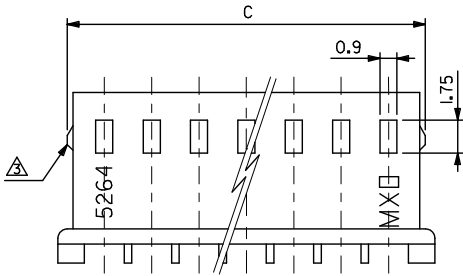


SECT.Z-Z

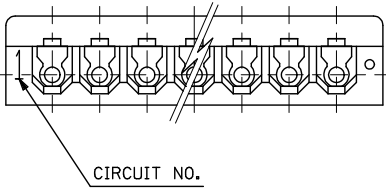


SECT.Y-Y

- NOTES:
1. SUITABLE TERMINAL : 5263SERIES
2. MATES WITH : 5267SERIES,5268SERIES
3. 9 CIRCUITS OR MORE WITHOUT LOOK.



	48.3	45	50-37-5193	5264-19	19	
	43.3	40	-5173	-17	17	
	38.3	35	-5153	-15	15	
	35.8	32.5	-5143	-14	14	
	33.3	30	-5133	-13	13	
	30.8	27.5	-5123	-12	12	
	28.3	25	-5113	-11	11	
	25.8	22.5	-5103	-10	10	
	23.3	20	-5093	-09	9	
	21.4	20.8	17.5	-5083	-08	8
	18.9	18.3	15	-5073	-07	7
	16.4	15.8	12.5	-5063	-06	6
	13.9	13.3	10	-5053	-05	5
	11.4	10.8	7.5	-5043	-04	4
	8.9	8.3	5	-5033	-03	3
	6.4	5.8	2.5	50-37-5023	5264-02	2



MATERIAL:
66 NYLON, UL94V-0

PART NUMBERS VOIDED EC NO. J2016-1314 DRAWING CHYK: 2016/06/29 APPR: Y0110 2016/07/08	GENERAL TOLERANCES (UNLESS SPECIFIED)		DIMENSION STYLE		SCALE	DESIGN UNITS	THIRD ANGLE PROJECTION
	0.25 UNDER	±0.03	MM ONLY		5:1	METRIC	☉
	0.25 OVER 0.5 UNDER	±0.05	DRAWN BY DATE		TITLE		
	0.5 OVER 1.0 UNDER	±0.1	K. TOJO 1991/11/05		2.5 LOW PROFILE RECEPTACLE HOUSING		
1.0 OVER 10 UNDER	±0.3	CHECKED BY DATE		DOCUMENT NO.			SHEET NO.
10 OVER 30 UNDER	±0.25	M. FUKUSHIMA 1992/01/15		SD-5264-N			1 OF 1
30 OVER	±0.2	APPROVED BY DATE		SEE CHART			
ANGULAR ±3 °		M. ENOMOTO 1992/01/15		THIS DRAWING CONTAINS INFORMATION THAT IS PROPRIETARY TO MOLEX ELECTRONIC TECHNOLOGIES, LLC AND SHOULD NOT BE USED WITHOUT WRITTEN PERMISSION			

9 8 7 6 5 4 3 2 1