

Excellent Integrated System Limited

Stocking Distributor

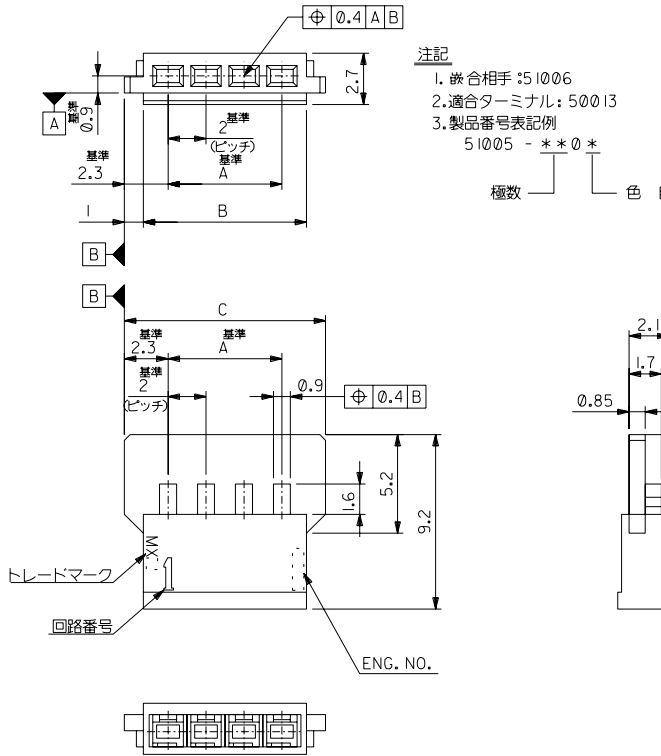
Click to view price, real time Inventory, Delivery & Lifecycle Information:

[Molex Connector Corporation](#)
[51005-0700](#)

For any questions, you can email us directly:

sales@integrated-circuit.com

DWG. NO. SD-51005-001



注記
 1. 嵌合相手: 51006
 2. 適合ターミナル: 50013
 3. 製品番号表記例
 51005 - ** * 0 *

極数 — 色 自然色 (白) 0
 黒 1
 赤 2
 黄 3
 青 4

6.6	4.6	2	51005-0204	2
C	B	A	ENG. NO.	極数
色: 青 / COLOR : BLUE				
22.6	20.6	18	51005-1003	10
20.6	18.6	16	↑ - 0903	9
14.6	12.6	10	- 0603	6
10.6	8.6	6	↓ - 0403	4
8.6	6.6	4	- 0303	3
6.6	4.6	2	51005-0203	2
C	B	A	ENG. NO.	極数
色: 黄 / COLOR : YELLOW				
18.6	16.6	14	51005-0802	8
14.6	12.6	10	↑ - 0602	6
10.6	8.6	6	↓ - 0402	4
8.6	6.6	4	- 0302	3
6.6	4.6	2	51005-0202	2
C	B	A	ENG. NO.	極数
色: 赤 / COLOR : RED				
8.6	6.6	4	51005-0301	3
6.6	4.6	2	51005-0201	2
C	B	A	ENG. NO.	極数
色: 黒 / COLOR : BLACK				
28.6	26.6	24	51005-1300	13
24.6	22.6	20	↑ - 1100	11
22.6	20.6	18	- 1000	10
20.6	18.6	16	↓ - 0900	9
18.6	16.6	14	- 0800	8
16.6	14.6	12	↓ - 0700	7
14.6	12.6	10	- 0600	6
12.6	10.6	8	↓ - 0500	5
10.6	8.6	6	- 0400	4
8.6	6.6	4	↓ - 0300	3
6.6	4.6	2	51005-0200	2
C	B	A	ENG. NO.	極数
色: 自然色 (白) / COLOR : NATURAL (WHITE)				

DO NOT SCALE DRAWING	EC NO. DRAWN: CHK: APPR:	EC NO. DRAWN: CHK: APPR:	EC NO. DRAWN: CHK: APPR:	EC NO. DRAWN: CHK: APPR:	EC NO. DRAWN: CHK: APPR:	RELEASED EC NO. J2004-4010 W/M/27 DRAWN: K. SETO W/M/27 CHK: H. TAKASE W/M/27 APPR: J. IYAZAWA W/M/27	MATERIAL 材料 PBTP (UL94V-0)	GENERAL TOLERANCES: (UNLESS SPECIFIED) — 一般公差	SCALE 2:1	DESIGN UNITS mm □ INCH	THIRD ANGLE PROJECTION	DIMENSIONS: mm □ INCH mm □ INCH	SHT REV	REVISE ON CAD ONLY
							FINISH 仕上り							
								10 UNDER 未満	+0.2	CHECKED BY & DATE S. Takase '04/04/27	MOLEX INCORPORATED	MATERIAL NO. SEE CHART	DRAWING NO. SD-51005-001	SHEET NO. 1 OF 1
							10 OVER 以上	+0.25	APPROVED BY & DATE S. Takase '04/04/27	THIS DRAWING CONTAINS INFORMATION THAT IS PROPRIETARY TO MOLEX INCORPORATED AND SHOULD NOT BE USED WITHOUT WRITTEN PERMISSION.				
							30 OVER 以上	+0.3	ANGLE 角度	+3°				EN-02J(097) MXJ-54