

## Excellent Integrated System Limited

Stocking Distributor

Click to view price, real time Inventory, Delivery & Lifecycle Information:

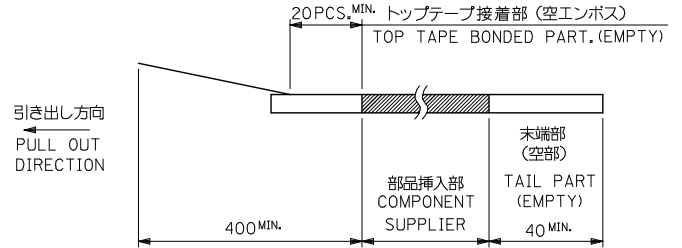
[Molex Connector Corporation](#)  
[52559-0692](#)

For any questions, you can email us directly:

[sales@integrated-circuit.com](mailto:sales@integrated-circuit.com)

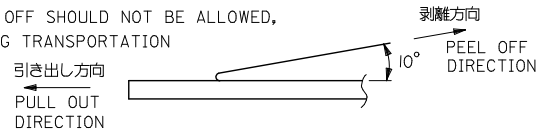
注記 NOTES

- 製品番号 52559-\*\*\*17 の梱包状態はアクチュエータがロックした状態とする。  
詳細寸法については図面 SD-52559-044 を参照下さい。  
IN THE PACKAGE,ACTUATOR OF PART NO.52559-\*\*\*17 SHOULD BE LOCKED  
RE DETAILED DIMENSIONS,SEE SD-52559-044
- 梱包数量：1000個/リール  
NUMBER OF CONNECTORS:1000PCS/REEL
- リードテープ長さ LEAD TAPE LENGTH

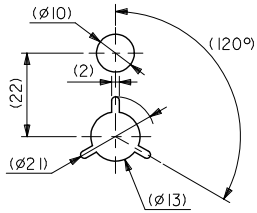
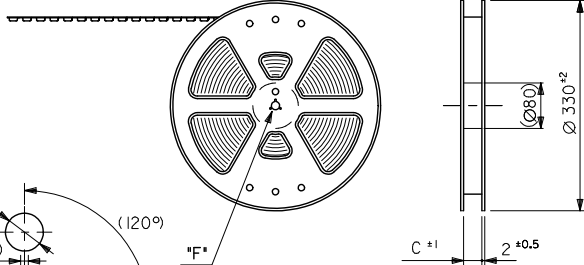


- トップテープの剥離強度：(剥離方向は下図参照)  
0.1N~0.7N(10.2gf~71.4gf)尚、本規格値は、出荷時に適用。  
(但し、輸送時に剥離が発生しない事。)

PEELING OFF FORCE OF TOP TAPE  
0.1N~0.7N(10.2gf~71.4gf)(PEELING DIRECTION AS SHOWN IN FOLLOWING FIG.)  
THIS REQUIREMENT SHOULD BE APPLIED AT SHIPMENT  
PEEL OFF SHOULD NOT BE ALLOWED,  
DURING TRANSPORTATION



引き出し方向  
PULL OUT  
DIRECTION



DETAIL "F"

5. 材料

キャリアテープ:ポリプロピレン (PP)  
トップテープ: PET, PE, PEF  
リール:ポリスチレン (PS) <リサイクル材を含む>

MATERIAL CARRIER TAPE:POLYPROPYLENE  
TOP TAPE:PET,PE,PEF  
REEL:POLYSTYREN(PS)  
<RECYCLE MATERIAL CONTAINED>

GENERAL TOLERANCES (UNLESS SPECIFIED)			DIMENSION STYLE MM ONLY		SCALE ---	DESIGN UNITS METRIC	THIRD ANGLE PROJECTION
0.25	UNDER	UNDER	±0.03	DRAWN BY	DATE	TITLE	
0.25	OVER	0.5	UNDER	M.SHIMIZU	2000/12/20	0.5 FPC CONN ASSY ZIF SMT ST EMBSTP PKG	
0.5	OVER	1.0	UNDER	CHECKED BY	DATE	molex	
1.0	OVER	10	UNDER	S.KUNISHI	2000/12/20	DOCUMENT NO. SD-52559-054	
10	OVER	30	UNDER	APPROVED BY	DATE	SHEET NO. 1 OF 3	
30	OVER		UNDER	M.FUKUSHIMA	2000/12/20		
ANGULAR			±3 °	MATERIAL NO.			
DRAFT WHERE APPLICABLE MUST REMAIN WITHIN DIMENSIONS				SEE SHEET 2,3			
				THIS DRAWING CONTAINS INFORMATION THAT IS PROPRIETARY TO MOLEX INCORPORATED AND SHOULD NOT BE USED WITHOUT WRITTEN PERMISSION			

10 9 8 7 6 5 4 3 2 1

F

E

D

C

B

A

F

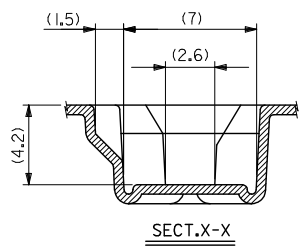
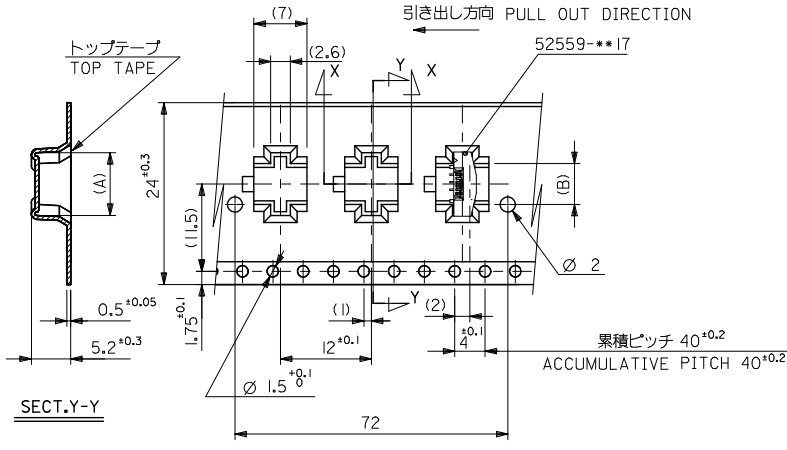
E

D

C

B

A



24mm幅キャリアテープ  
24mm WIDTH CARRIER TAPE

24	25.5	5.4	8.3	52559-0692	6
キャリアテープ幅 CARRIER TAPE WIDTH	C	(B)	(A)	ENG. NO.	極数 CIRCUIT
MM ONLY	SCALE ---	DESIGN UNITS METRIC	◎	THIRD ANGLE PROJECTION	

REVISED JEC NO. J2016-0380 DRAWN: SANIMA 2015/10/15 CHIKIDAKAKASHI 2015/10/16 APPR: INOYAMA 2015/11/09	GENERAL TOLERANCES (UNLESS SPECIFIED)		DRAWN BY	DATE	TITLE 0.5 FPC CONN ASSY ZIF SMT ST EMBSTP PKG <b>molex</b> DOCUMENT NO. SD-52559-054 SHEET NO. 2 OF 3		
	0.25 UNDER	UNDER	±0.03	M. SHIMIZU 2000/12/20			
	0.25 OVER	0.5 UNDER	±0.05	CHECKED BY		DATE	
	0.5 OVER	1.0 UNDER	±0.1	S. KUNISHI 2000/12/20		APPROVED BY	DATE
	1.0 OVER	30 UNDER	±0.2	M. FUKUSHIMA 2000/12/20		MATERIAL NO.	
	30 OVER	±0.3	SEE CHART				
ANGULAR ±3 °			SIZE A3				
DRAFT WHERE APPLICABLE MUST REMAIN WITHIN DIMENSIONS			THIS DRAWING CONTAINS INFORMATION THAT IS PROPRIETARY TO MOLEX INCORPORATED AND SHOULD NOT BE USED WITHOUT WRITTEN PERMISSION				

9 8 7 6 5 4 3 2 1

10 9 8 7 6 5 4 3 2 1

F

E

D

C

B

A

F

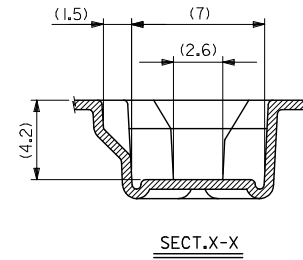
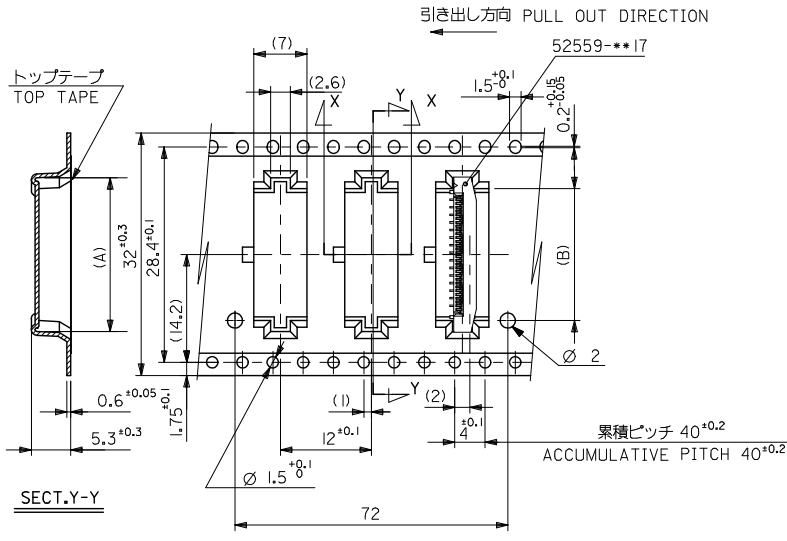
E

D

C

B

A



32mm幅キャリアテープ  
32mm WIDTH CARRIER TAPE

32	33.5	17.4	20.3	52559-3092	30
キャリアテープ幅 CARRIER TAPE WIDTH	SCALE	DESIGN UNITS	(A)	ENG. NO.	極数 CIRCUIT
MM ONLY	---	METRIC	◎	THIRD ANGLE PROJECTION	

REVISED EC NO. J2016-0380 DRAWN: SANIMA 2015/10/15 CHKD: TAKAHASHI 2015/10/16 APPR: INOIGAWA 2015/11/09	GENERAL TOLERANCES (UNLESS SPECIFIED)		DRAWN BY	DATE	TITLE 0.5 FPC CONN ASSY ZIF SMT ST EMBSTP PKG  <b>molex</b> DOCUMENT NO. SD-52559-054	
	0.25 UNDER	UNDER	±0.03	M. SHIMIZU		2000/12/20
	0.25 OVER	0.5 UNDER	±0.05	S. KUNISHI		2000/12/20
	0.5 OVER	1.0 UNDER	±0.1	M. FUKUSHIMA		2000/12/20
	1.0 OVER	30 UNDER	±0.2			
	30 OVER		±0.3			
	ANGULAR	±3 °				
DRAFT WHERE APPLICABLE MUST REMAIN WITHIN DIMENSIONS			SIZE	THIS DRAWING CONTAINS INFORMATION THAT IS PROPRIETARY TO MOLEX INCORPORATED AND SHOULD NOT BE USED WITHOUT WRITTEN PERMISSION		
			A3			

9 8 7 6 5 4 3 2 1