

Excellent Integrated System Limited

Stocking Distributor

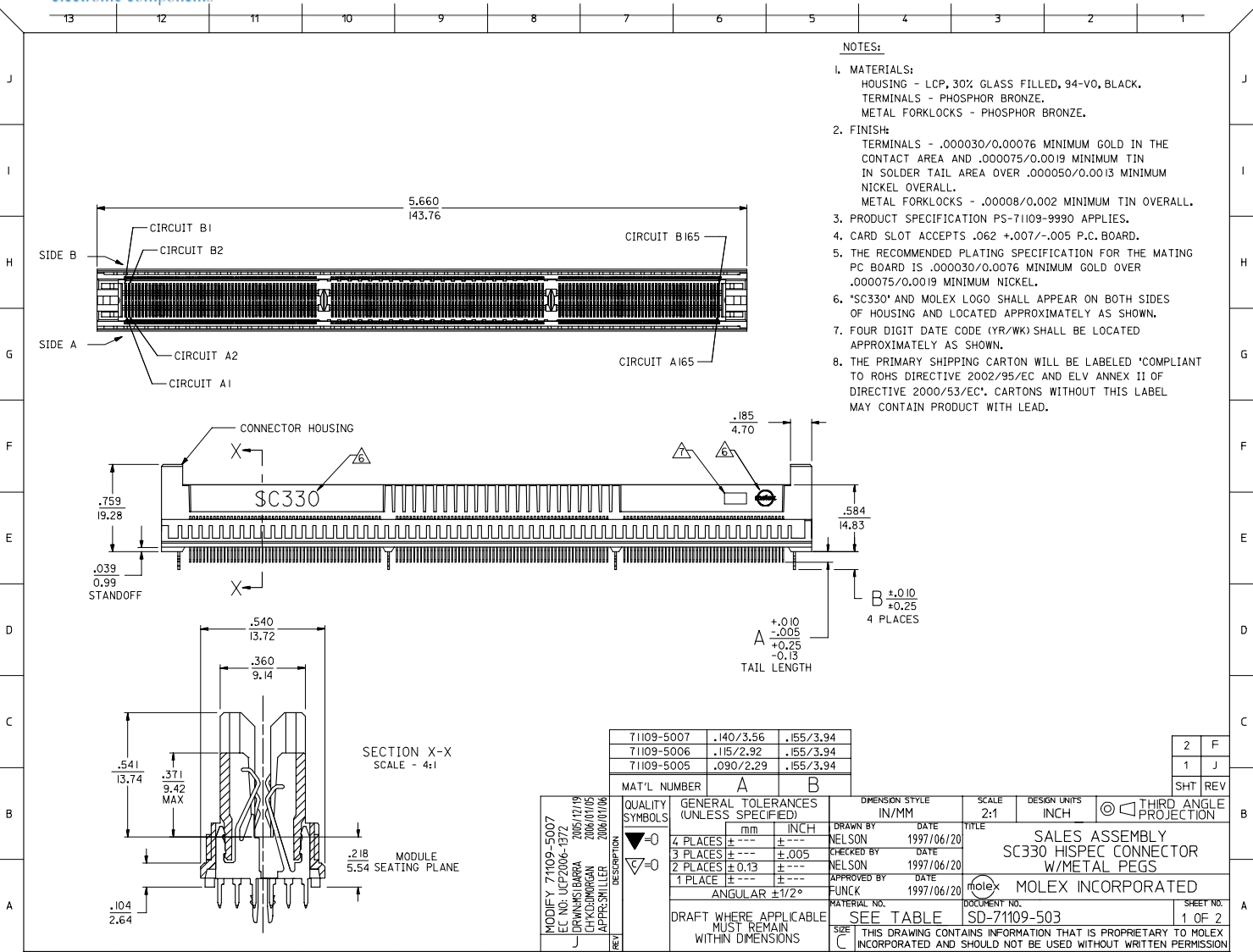
Click to view price, real time Inventory, Delivery & Lifecycle Information:

[Molex Connector Corporation](#)
[71109-5007](#)

For any questions, you can email us directly:
sales@integrated-circuit.com

NOTES:

1. MATERIALS:
HOUSING - LCP, 30% GLASS FILLED, 94-V0, BLACK.
TERMINALS - PHOSPHOR BRONZE.
METAL FORKLLOCKS - PHOSPHOR BRONZE.
2. FINISH:
TERMINALS - .000030/0.00076 MINIMUM GOLD IN THE CONTACT AREA AND .000075/0.0019 MINIMUM TIN IN SOLDER TAIL AREA OVER .000050/0.0013 MINIMUM NICKEL OVERALL.
METAL FORKLLOCKS - .00008/0.002 MINIMUM TIN OVERALL.
3. PRODUCT SPECIFICATION PS-71109-9990 APPLIES.
4. CARD SLOT ACCEPTS .062 +.007/-.005 P.C. BOARD.
5. THE RECOMMENDED PLATING SPECIFICATION FOR THE MATING PC BOARD IS .000030/0.0076 MINIMUM GOLD OVER .000075/0.0019 MINIMUM NICKEL.
6. *SC330* AND MOLEX LOGO SHALL APPEAR ON BOTH SIDES OF HOUSING AND LOCATED APPROXIMATELY AS SHOWN.
7. FOUR DIGIT DATE CODE (YR/WK) SHALL BE LOCATED APPROXIMATELY AS SHOWN.
8. THE PRIMARY SHIPPING CARTON WILL BE LABELED 'COMPLIANT TO ROHS DIRECTIVE 2002/95/EC AND ELV ANNEX II OF DIRECTIVE 2000/53/EC'. CARTONS WITHOUT THIS LABEL MAY CONTAIN PRODUCT WITH LEAD.



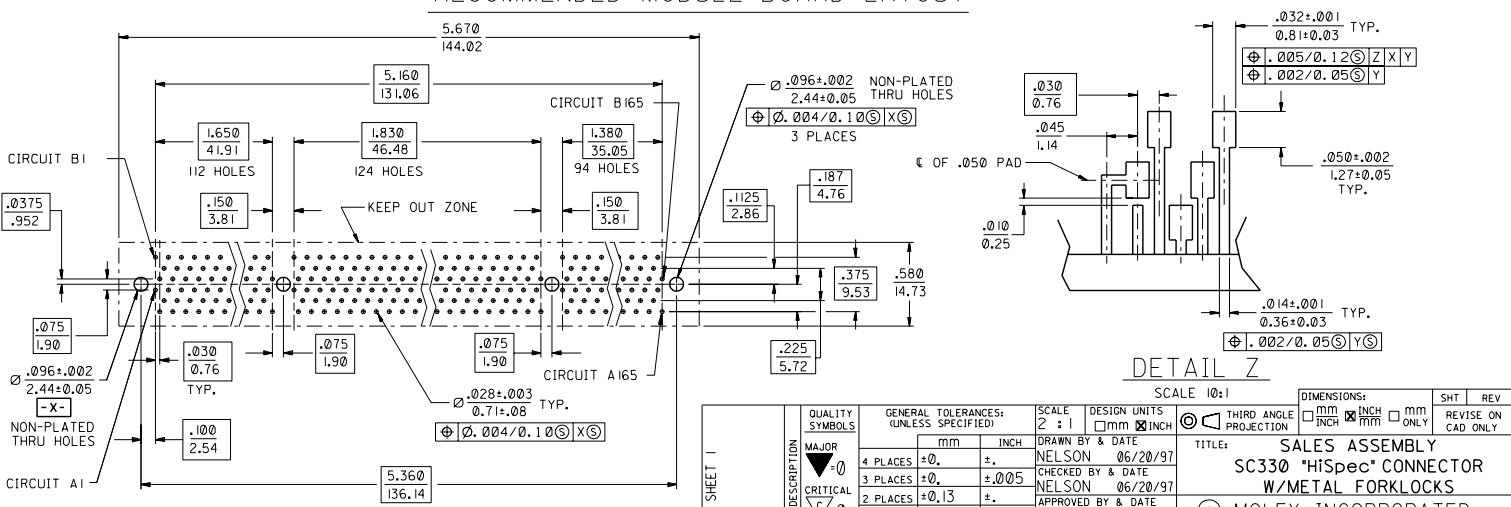
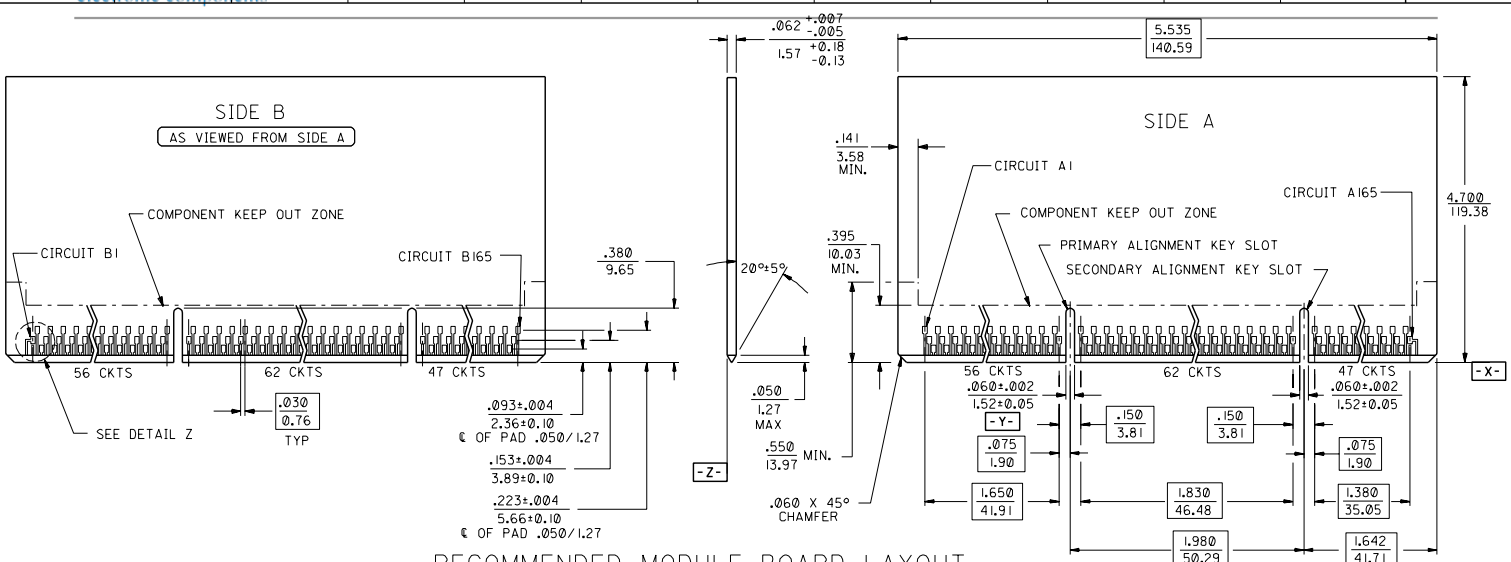
71109-5007	.140/3.56	.155/3.94
71109-5006	.115/2.92	.155/3.94
71109-5005	.090/2.29	.155/3.94

2	F
1	J
SHT	REV

MODIFY	71109-5007
EC NO.	UCF2006-1372
DRWING	BARRA 2005/12/19
CHKD	BOJORGAN 2006/01/05
APPR	MILLER 2006/07/06
REV	DESCRIPTION

QUALITY SYMBOLS	GENERAL TOLERANCES (UNLESS SPECIFIED)	
	mm	INCH
▽=0	4 PLACES ±---	±---
▽=0	3 PLACES ±---	±.005
	2 PLACES ±0.13	±---
	1 PLACE ±---	±---
	ANGULAR ±1/2°	
DRAFT WHERE APPLICABLE MUST REMAIN WITHIN DIMENSIONS		

MAT'L NUMBER	A	B	SCALE	2:1	DESIGN UNITS	INCH	THIRD ANGLE PROJECTION
DRAWN BY	DATE	TITLE	SALES ASSEMBLY				
CHECKED BY	DATE		SC330 HISPEC CONNECTOR				
APPROVED BY	DATE		W/METAL PEGS				
FUNCK	1997/06/20		MOLEX INCORPORATED				
MATERIAL NO.	DOCUMENT NO.	SHEET NO.	1 OF 2				
SEE TABLE	SD-71109-503		THIS DRAWING CONTAINS INFORMATION THAT IS PROPRIETARY TO MOLEX INCORPORATED AND SHOULD NOT BE USED WITHOUT WRITTEN PERMISSION				



SEE SHEET 1 EC NO. DRAWN: CHK: APPR: REV	QUALITY SYMBOLS MAJOR $\nabla \neq 0$ CRITICAL $\nabla \neq 0$	GENERAL TOLERANCES: (UNLESS SPECIFIED) mm INCH 4 PLACES ±0. ±. 3 PLACES ±0. ±.005 2 PLACES ±0.13 ±. 1 PLACE ±0. ±. ANGULAR: ± 1 ° DRAFT WHERE APPLICABLE MUST REMAIN WITHIN DIMENSIONS	SCALE 2 ± 1 DESIGN UNITS <input type="checkbox"/> mm <input checked="" type="checkbox"/> INCH DRAWN BY & DATE NELSON 06/20/97 CHECKED BY & DATE NELSON 06/20/97 APPROVED BY & DATE FUNCK 06/20/97 CAD FILENAME S7110968.S02 MATERIAL NO. SEE TABLE DRAWING NO. SD-71109-503 SHEET NO. 2 SIZE C	DIMENSIONS: <input type="checkbox"/> mm <input checked="" type="checkbox"/> INCH <input type="checkbox"/> mm ONLY SHT REV REVISE ON CAD ONLY
	TITLE: SALES ASSEMBLY SC330 "HiSpec" CONNECTOR W/METAL FORKLLOCKS MOLEX INCORPORATED			
	THIRD ANGLE PROJECTION SCALE 10:1			
	THIS DRAWING CONTAINS INFORMATION THAT IS PROPRIETARY TO MOLEX INCORPORATED AND SHOULD NOT BE USED WITHOUT WRITTEN PERMISSION.			