

Excellent Integrated System Limited

Stocking Distributor

Click to view price, real time Inventory, Delivery & Lifecycle Information:

[Sumida Corporation](#)
[CRR32NP-02A](#)

For any questions, you can email us directly:

sales@integrated-circuit.com



SIGNAL COMMON MODE COIL <SMD Type:CRR Series>

Type: CRR32

◆ **Product Description**

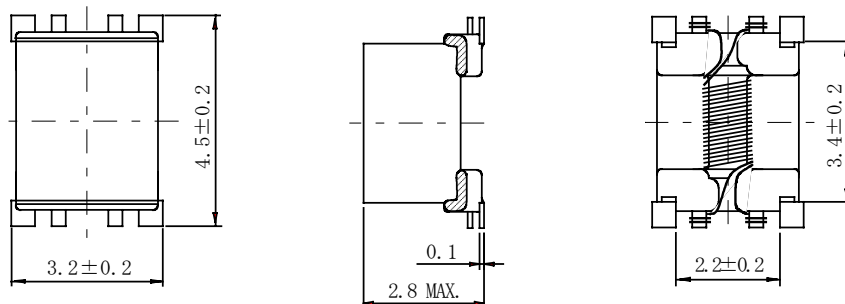
- 4.7×3.4mm Max.(L×W), 2.8mm Max. Height .
- Impedance range: 350 Ω ~ 800 Ω .
- Rated current range: 400mA~800mA.



◆ **Feature**

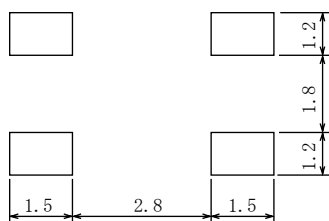
- Correspondence to the large current due to low D.C.R.
- High impedance in wide frequency band.
- Ideally used in D.C common modem line filter(Digital AV equipment ,Digital still camera, Digital video camera).
- RoHS Compliance.

◆ **Dimensions (mm)**

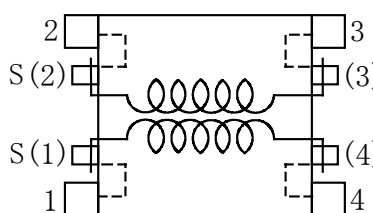


* Dimension does include solder used on coil.

◆ **Land Pattern (mm)**



◆ **Schematics (Bottom)**



◆ **Specification**

Part Name	Stamp	Impedance(Ω) <Min.> 100 MHz (1-4) and (2-3)	D.C.R.(Ω) [Max.](at 20°C) (1-4) and (2-3)	Rated current (mA)[Max.] ※1
CRR32NP-02A	1	800	0.5	400
CRR32NP-05A	2	650	0.3	460
CRR32NP-07A	3	500	0.2	580
CRR32NP-10A	4	350	0.2	800

※1. Rated current: The DC current at which the temperature rise is Δt=40°C.(Ta=20°C).