

Excellent Integrated System Limited

Stocking Distributor

Click to view price, real time Inventory, Delivery & Lifecycle Information:

[Omron Automation & Safety](#)
[WS02-CFSC1-EV3](#)

For any questions, you can email us directly:

sales@integrated-circuit.com

Programmable Safety Controllers

WS02-CFSC1-E

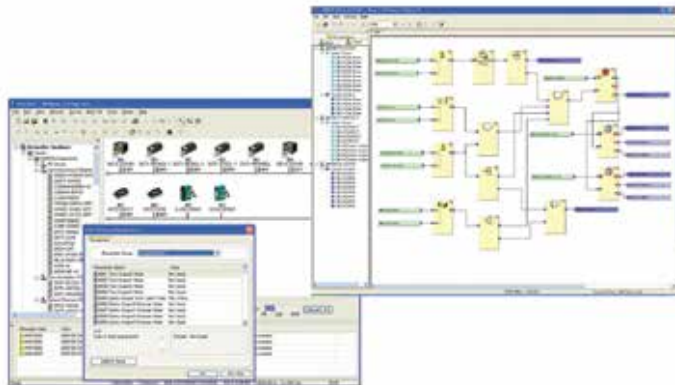
SpeedSPEC

WS02
sti.com

For full product information, visit www.sti.com. Use the SpeedSPEC Code for quick access to the specific web page.

Network Configurator

- Programming software for creating safety circuits
- Used to configure Safety Network Controllers and Safety I/O Terminals
- Provides safety circuit programming functions
- Provides monitoring functions for safety circuits
- Includes DeviceNet Configurator functions
- A Rapid Delivery Product: Select models are available for shipment today or within 3 to 5 days



Specifications

Applicable computer	IBM PC/AT or compatible
CPU	Intel Pentium PC, 300 MHz or higher (Pentium III, 1-GHz or higher recommended)
OS	Microsoft Windows 2000 Microsoft Windows XP Microsoft Windows Vista** Microsoft Windows 7**
Supported languages	English
RAM	256 MB or higher
Hard disk	At least 200 MB of available hard disk space
Monitor	S-VGA or better display capability
CD-ROM	One CD-ROM drive min.
Communications ports	One of the following communications ports is required. <ul style="list-style-type: none"> • USB port Connecting online via the USB port (USB 1.1) of the NE1A-SCPU-series Controllers • DeviceNet Interface Card 3G8E2-DRM21-V1: Connecting online via DeviceNet

Note: Windows is a registered trademark of Microsoft.

IBM is a registered trademark of International Business Machines Corp.

Ordering

Name	Components	Applicable computer	Applicable OS	Model
Network Configurator	Installation disc (CD-ROM: 1 license)	IBM PC/AT or compatible	Windows 2000 Windows XP Windows Vista** Windows 7**	WS02-CFSC1-EV3
	Upgrade disc (CD-ROM: 1 license)*			WS02-CFSC1-EV3-UP

*We recommend you use the upgrade disk if you are using a version earlier than version 3.3.

**Windows Vista (32-bit) is supported in versions 2.20 and later. Windows Vista & Windows 7 (32-bit and 64-bit) are supported in versions 3.3 and later.

Note: If you are using a version 2.0, you can upgrade to the latest 2.xx version of the software at www.sti.com.

Select models are available for Rapid Delivery.

Visit this product on www.sti.com for details.