

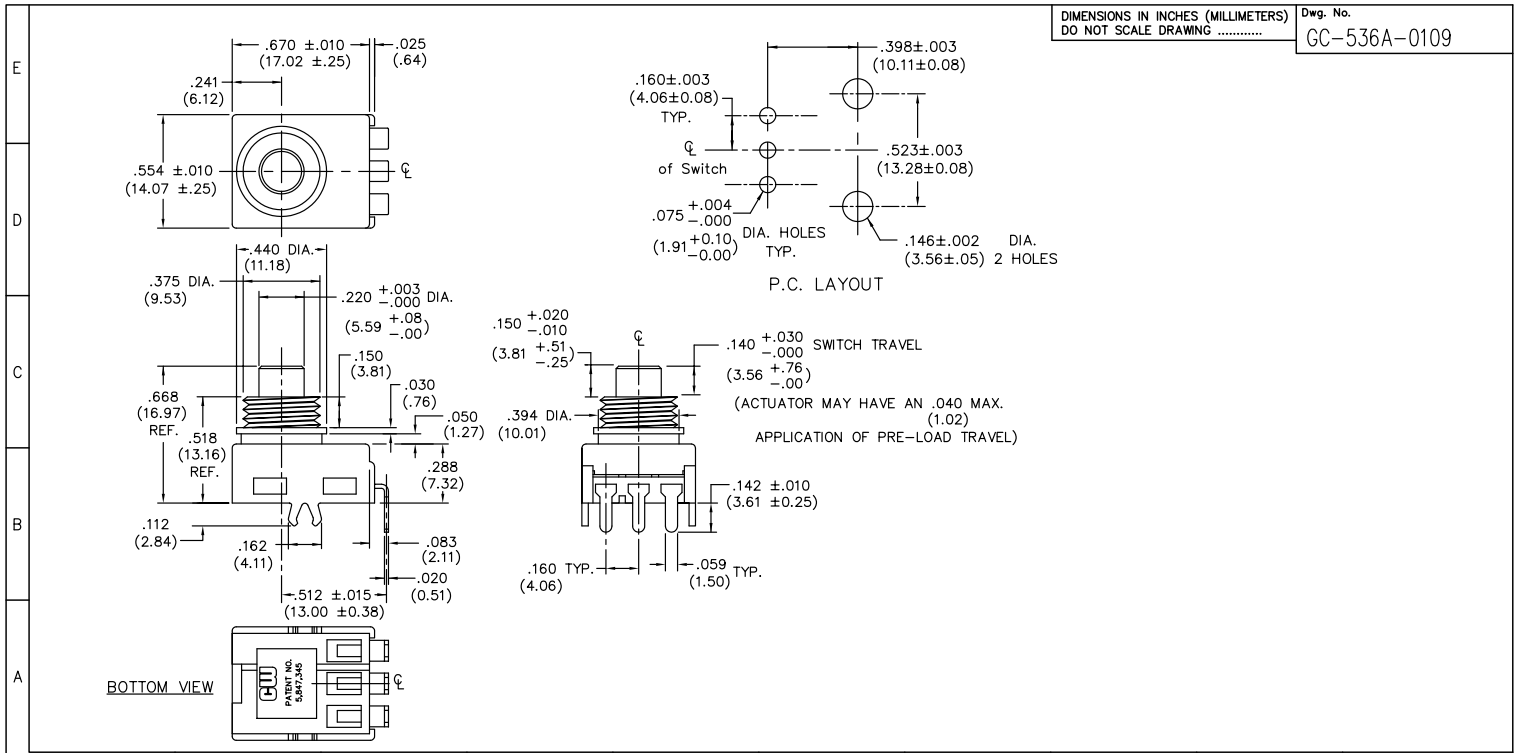
Excellent Integrated System Limited

Stocking Distributor

Click to view price, real time Inventory, Delivery & Lifecycle Information:

[CW Industries](#)
[GC-536A-0109](#)

For any questions, you can email us directly:
sales@integrated-circuit.com



B-FORMAT 2002 REVISIONS	1	2	3	4	5	6	7	8	9	10	
								CW INDUSTRIES Southampton, Pa. 18966 TOLERANCES UNLESS OTHERWISE SPECIFIED 2 Place Decimal ±.010 METRIC 3 Place Decimal ±.005 1 Place Dec. ±.25mm Angles ±1° 2 Place Dec. ±.13mm		Title: SWITCH ASSY. PUSH ON-PUSH OFF S.P./D.T. PCB VERSION	
								Made for: CW IND.		Division: SWITCH	
								Drawn by: DGW 11-17-2010		Dwg. No. GC-536A-0109	
							Checked by: G. Guld 11-18-10		Approval: EJP 11/19/10		

THIS INFORMATION IS CONFIDENTIAL AND PROPRIETARY TO CW INDUSTRIES INCORPORATED AND ITS AFFILIATES. IT MAY NOT BE DISCLOSED TO ANYONE, OTHER THAN CW INDUSTRIES PERSONNEL, WITHOUT WRITTEN AUTHORIZATION FROM CW INDUSTRIES INCORPORATED, SOUTHAMPTON, PENNSYLVANIA USA.