

Excellent Integrated System Limited

Stocking Distributor

Click to view price, real time Inventory, Delivery & Lifecycle Information:

[Spectrum Digital Inc](#)
[702070](#)

For any questions, you can email us directly:

sales@integrated-circuit.com



TMS320C6424 ***Evaluation Module***

*Technical
Reference*



Distributor of Spectrum Digital Inc: Excellent Integrated System Limited

Datasheet of 702070 - MOD EVAL 600MHZ TMS420C6424

Contact us: sales@integrated-circuit.com Website: www.integrated-circuit.com

TMS320C6424 Evaluation Module Technical Reference

509125-0001 Rev. A
February 2007

SPECTRUM DIGITAL, INC.
12502 Exchange Drive, Suite 440 Stafford, TX. 77477
Tel: 281.494.4505 Fax: 281.494.5310
sales@spectrumdigital.com www.spectrumdigital.com

IMPORTANT NOTICE

Spectrum Digital, Inc. reserves the right to make changes to its products or to discontinue any product or service without notice. Customers are advised to obtain the latest version of relevant information to verify that the data being relied on is current before placing orders.

Spectrum Digital, Inc. warrants performance of its products and related software to current specifications in accordance with Spectrum Digital's standard warranty. Testing and other quality control techniques are utilized to the extent deemed necessary to support this warranty.

Please be aware that the products described herein are not intended for use in life-support appliances, devices, or systems. Spectrum Digital does not warrant nor is Spectrum Digital liable for the product described herein to be used in other than a development environment.

Spectrum Digital, Inc. assumes no liability for applications assistance, customer product design, software performance, or infringement of patents or services described herein. Nor does Spectrum Digital warrant or represent any license, either express or implied, is granted under any patent right, copyright, or other intellectual property right of Spectrum Digital, Inc. covering or relating to any combination, machine, or process in which such Digital Signal Processing development products or services might be or are used.

WARNING

This equipment is intended for use in a laboratory test environment only. It generates, uses, and can radiate radio frequency energy and has not been tested for compliance with the limits of computing devices pursuant to subpart J of part 15 of FCC rules, which are designed to provide reasonable protection against radio frequency interference. Operation of this equipment in other environments may cause interference with radio communications, in which case the user at his own expense will be required to take whatever measures necessary to correct this interference.

Contents

1	Introduction to the C6424 Evaluation Module	1-1
	<i>Provides you with a description of the C6424 Evaluation Module, key features, and block diagram.</i>	
1.1	Key Features	1-2
1.2	Functional Overview	1-3
1.3	Basic Operation	1-4
1.4	Memory Map	1-4
1.5	Configuration Switch Settings	1-5
1.6	Power Supply	1-5
1.7	Power Measurement	1-5
2	Board Components	2-1
	<i>Describes the operation of the major board components on the C6424 Evaluation Module.</i>	
2.1	EMIF Interfaces	2-2
2.1.1	DDR2 Memory Interface	2-2
2.1.2	Flash, NAND Flash, SRAM Memory Interface	2-2
2.2	Peripheral Interfaces	2-2
2.2.1	VLYNQ Interface	2-2
2.2.2	UART Interface	2-2
2.3	AIC33 Interface	2-3
2.4	Ethernet Interface	2-4
2.5	I ² C Interface	2-4
2.5.1	I/O Expanders	2-5
2.5.2	I ² C EEPROM	2-7
2.6	S/PDIF Analog, and Optical Interfaces	2-7
2.7	Daughter Card Interface	2-8
2.8	C6424 Core CPU Clock	2-8
2.9	C6424 Core Voltage Select	2-8

3	Physical Specifications	3-1
	<i>Describes the physical layout of the C6424 Evaluation Module and its connectors.</i>	
3.1	Board Layout	3-3
3.2	Connectors	3-4
3.2.1	J10, S/PDIF Out	3-5
3.2.2	J16, +5V Input	3-5
3.2.3	J20, Mini PCI Interface	3-6
3.2.4	J501, Embedded Mini USB Emulation Interface	3-7
3.2.5	P3, Ethernet Interface	3-7
3.2.6	P4, PCI Interface	3-8
3.2.7	P8, RS-232 UART	3-10
3.2.8	P10, Audio Line In Connector	3-11
3.2.9	P11, Microphone In Connector	3-11
3.2.10	P12, Headphone Out Connector	3-11
3.2.11	P13, Audio Line Out Connector	3-12
3.2.12	P14, S/PDIF Out (Optical)	3-12
3.2.13	DC_P1, Memory/Video Expansion	3-13
3.2.14	DC_P2, Peripheral Expansion	3-14
3.2.15	DC_P3, VLYNQ Connector	3-15
3.3	Jumpers	3-15
3.3.1	JP1 Jumper	3-16
3.3.2	JP2 Jumper	3-16
3.3.3	JP3 Jumper	3-16
3.3.4	JP4 Jumper	3-16
3.4	LEDs	3-17
3.5	Switches	3-17
3.5.1	SW1, Bootload Mode Selections	3-18
3.5.2	SW2, Bootload Configuration Select	3-19
3.5.3	SW3, EMDATA Select	3-19
3.5.4	SW4, 4 Position User Readable	3-19
3.5.5	SW5, Power On Reset Switch	3-19
3.5.6	SW6, Reset Switch	3-19
3.5.7	SW7, Slide Switch	3-20
3.6	Test Points	3-21
A	Schematics	A-1
	<i>Contains the schematics for the C6424 Evaluation Module</i>	
B	Mechanical Information	B-1
	<i>Contains the mechanical information about the C6424 Evaluation Module</i>	

About This Manual

This document describes the board level operations of the C6424 Evaluation Module (EVM). The EVM is based on the Texas Instruments TMS320C6424 Processor.

The C6424 Evaluation Module is a table top card that allows engineers and software developers to evaluate certain characteristics of the C6424 processor to determine if the processor meets the designers application requirements. Evaluators can create software to execute on board or expand the system in a variety of ways.

Notational Conventions

This document uses the following conventions.

The C6424 Evaluation Module will sometimes be referred to as the C6424 EVM or EVM.

Program listings, program examples, and interactive displays are shown in a special italic typeface. Here is a sample program listing.

equations
!rd = !strobe&rw;

Information About Cautions

This book may contain cautions.

This is an example of a caution statement.

A caution statement describes a situation that could potentially damage your software, or hardware, or other equipment. The information in a caution is provided for your protection. Please read each caution carefully.

Related Documents, Application Notes and User Guides

Information regarding this device can be found at the following Texas Instruments website:

<http://www.ti.com>

Table 1: Manual History

Revision	History
A	Alpha Release

Table 2: Board History

Revision	History
A	Alpha Release



Distributor of Spectrum Digital Inc: Excellent Integrated System Limited

Datasheet of 702070 - MOD EVAL 600MHZ TMS420C6424

Contact us: sales@integrated-circuit.com Website: www.integrated-circuit.com

Chapter 1

Introduction to the C6424 EVM

Chapter One provides a description of the C6424 EVM along with the key features and a block diagram of the circuit board.

Topic	Page
1.1 Key Features	1-2
1.2 Functional Overview	1-3
1.3 Basic Operation	1-4
1.4 Memory Map	1-4
1.5 Configuration Switch Settings	1-5
1.6 Power Supply	1-5
1.7 Power Measurement	1-5

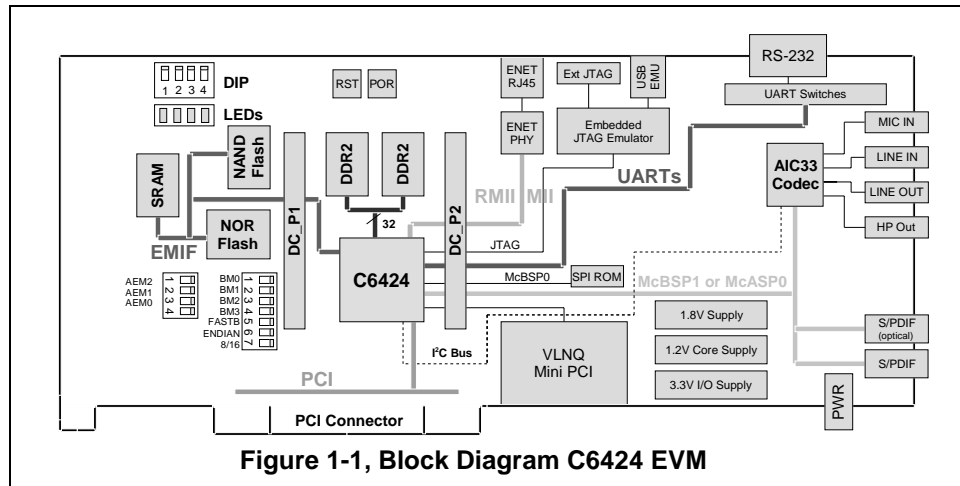
Spectrum Digital, Inc

1.1 Key Features

The C6424 EVM is a PCI based or standalone development platform that enables users to evaluate and develop applications for the TI C64xx processor family. Schematics, list of materials, and application notes are available to ease hardware development and reduce time to market. The EVM comes with a full complement of on board devices that suit a wide variety of application environments. Key features include:

- A Texas Instruments C6424 processor operating up to 600 Mhz.
- 128 Mbytes of DDR2 DRAM
- UART I/O Interface
- 16 Mbytes of non-volatile Flash memory, 64 Mbytes NAND Flash, 2 Mbytes SRAM
- AIC33 stereo codec
- I²C Interface with onboard eeprom and expanders
- 10/100 MBS Ethernet Interface
- Configurable boot load options
- Embedded JTAG emulation interface
- 4 user LEDs and 4 position user switch
- Single voltage power supply (+5V)
- Expansion connectors for daughter card use
- VLYNQ Interface
- S/PDIF Interface, analog, and optical

1.2 Functional Overview of the C6424 EVM



The C6424 on the EVM interfaces to on-board peripherals through integrated device interfaces and a 16-bit wide EMIF bus. The DDR2 memory is connected to its own dedicated 32 bit wide bus. The EMIF bus is jumper selectable to be connected to the Flash, SRAM, NAND, and daughter card expansion connectors which are used for add-on boards.

An on-board AIC33 codec allows the DSP to transmit and receive analog audio signals. The I²C bus is used for the codec control interface, while the McBSP controls the audio stream. Signal interfacing is done through 3.5mm audio jacks that correspond to microphone input, line input, line output, and headphone outputs.

The EVM includes 4 user LEDs, and 4 position user DIP switch which can be used to provide the user with interactive feedback. These interfaces are implemented via I²C expanders.

VLYNQ, and ethernet MAC interfaces are integrated peripherals on the C6424 processor exploiting its system on a chip architecture. VLYNQ is available when the PCI is not used.

An included 5V external power supply is used to power the board. On-board switching voltage regulators provide the +1.2V CPU core voltage and +3.3V for peripherals and +1.8V DDR2 memory. The board is held in reset until these supplies are within operating specifications.

Code Composer communicates with the EVM through an embedded emulator or via the 14 pin external JTAG connector.

Spectrum Digital, Inc

1.3 Basic Operation

The EVM is designed to work with TI's Code Composer Studio development. Code Composer communicates with the board through the embedded emulator or an external JTAG emulator. To start, follow the instructions in the Quick Start Guide to install Code Composer. This process will install all of the necessary development tools, documentation and drivers.

Detailed information about the EVM including examples and reference material is available on the EVM's CD-ROM.

1.4 Memory Map

The C64xx family of processors have a large byte addressable address space, some limitations to byte addressing are determined by peripheral interconnection to the C6424 device. Program code and data can be placed anywhere in the unified address space. Addresses are multiple sizes depending on hardware implementation. Refer to the appropriate device data sheets for more details.

The memory map shows the address space of a C6424 processor on the left with specific details of how each region is used on the right. By default, the internal memory sits at the beginning of the address space. Portions of memory can be remapped in software as L2 cache rather than fixed RAM.

The part incorporates a dual EMIF interface. One dedicated EMIF directly interfaces to the DDR2 memory. The Flash, NAND Flash, or SRAM are mapped into CS2 space and selectable via JP2. When CS2 is used for daughter card interfacing JP2 must be set appropriately.

Address	C6424 EVM
0x10800000	Cache/RAM
0x42000000	CS2
0x44000000	CS3
0x46000000	CS4
0x48000000	CS5
0x4C000000	VLNQ
0x80000000	DDR

Figure 1-2, Memory Map, C6424 EVM

1.5 Configuration Switch Settings

The EVM has a two configuration switches that allow users to control the operational state of the processor when it is released from reset. The configuration switches are labeled SW1 and SW2 on the EVM board.

Switch SW1 configures the boot mode that will be used when the DSP starts executing. By default the switches are configured to EMIF boot (out of 16-bit Flash). Refer to section 3.5.1 for the boot load options using switch SW1.

1.6 Power Supply

The EVM operates from a single +5V external power supply connected to the main power input (J16), a 2.5 MM. barrel-type plug. Internally, the +5V input is converted into +1.2V, +1.8V and +3.3V using Texas Instruments swift voltage regulators. The +1.2V supply is used for the DSP core while the +3.3V supply is used for the DSP's I/O buffers and other chips on the board. The +1.8 volt supply is used for C6424 DDR2 interface, and DDR2 memory.

There are three power test points on the EVM; TP23, TP34, and TP38. These test points provide a convenient mechanism to check the EVM's multiple power supplies. The table below shows the voltages for each test point and what the supply is used for.

Table 1: Power Test Points

Test Point	Voltage	Voltage Use
TP23	+1.2 V	C6424 Core
TP34	+3.3V	DSP I/O and logic
TP38	+1.8 V	DDR2 Memory, DSP I/O, and logic

1.7 Power Measurement

The EVM supports power test points to allow measurement of the various power rails on the C6424 device. Series resistors are used in the device's power domains thereby measuring the voltage across these resistors. The current can be calculated via $V = I * R$.

Refer to the test point section in chapter 3 for detailed information on measuring current on the C6424 device.

Spectrum Digital, Inc

Chapter 2

Board Components

This chapter describes the operation of the major board components on the C6424 EVM.

Topic	Page
2.1 EMIF Interfaces	2-2
2.1.1 DDR2 Memory Interface	2-2
2.1.2 Flash, NAND Flash, SRAM Memory Interface	2-2
2.2 Peripheral Interfaces	2-2
2.2.1 VLYNQ Interface	2-2
2.2.2 UART Interface	2-2
2.3 AIC33 Interface	2-3
2.4 Ethernet Interface	2-4
2.5 I²C Interface	2-4
2.5.1 I/O Expanders	2-5
2.5.2 I ² C EEPROM	2-7
2.6 S/PDIF Analog, and Optical Interfaces	2-7
2.7 Daughter Card Interface	2-8
2.8 C6424 Core CPU Clock	2-8
2.9 C6424 Core Voltage Select	2-8

Spectrum Digital, Inc

2.1 EMIF Interfaces

A separate 16 bit EMIF with multiple chip selects divide up the address space and allow for asynchronous accesses on the EVM. On board the CS2 is used for Flash, NAND Flash, or SRAM.

2.1.1 DDR2 Memory Interface

The C6424 device incorporates a dedicated 32 bit wide DDR2 memory bus. The EVM uses two 512 megabit 16 bit wide memories on this bus, for a total of 128 megabytes of memory for program, data, and video storage. The internal DDR controller uses a PLL to control the DDR memory timing. The interface supports rates up to 166 Mhz., and is clocked on differential edges for optimal performance. Memory refresh for DDR2 is handled automatically by the C6424 internal DDR controller.

2.1.2 Flash, NAND Flash, SRAM Memory Interface

The C6424 has 16 megabytes of NOR Flash, or 64 megabytes of NAND Flash, or 2 megabyte of SRAM memory mapped into the CS2 space. This NOR Flash memory, and NAND Flash memory are used primarily for boot loading. SRAM is used for debugging application code. The CS2 space is configured as 16 bits wide on the C6424 EVM for NOR Flash, SRAM. The NAND flash is always configured as an 8 bit device.

2.2 Peripheral Interfaces

The C6424 has several peripheral interfaces which allow the user to interface to external devices. These interfaces are outlined in the following sections.

2.2.1 VLYNQ Interface

The C6424 brings its internal VLYNQ interface out to a mini PCI connector J20 and small 20 pin connector DC_P3. The VLYNQ interface is multiplexed on the PCI/EM bus and this bus must be reconfigured after boot up to support VLYNQ. A multiplexer is used to minimize board layout stubs and allow as direct as possible interface for the VLYNQ signals. VLYNQ is not operational if the board is used in a PCI slot.

2.2.2 UART Interface

The internal UART0 on the C6424 device is driven to connector P8. The UART's interface is routed to a Texas Instruments MAX3221 RS-232 line driver prior to being brought out to a male DB-9 connector, P8. The on board UART signals can be disabled by pulling the RS232_ENABLEn signal high via the daughter card connectors.

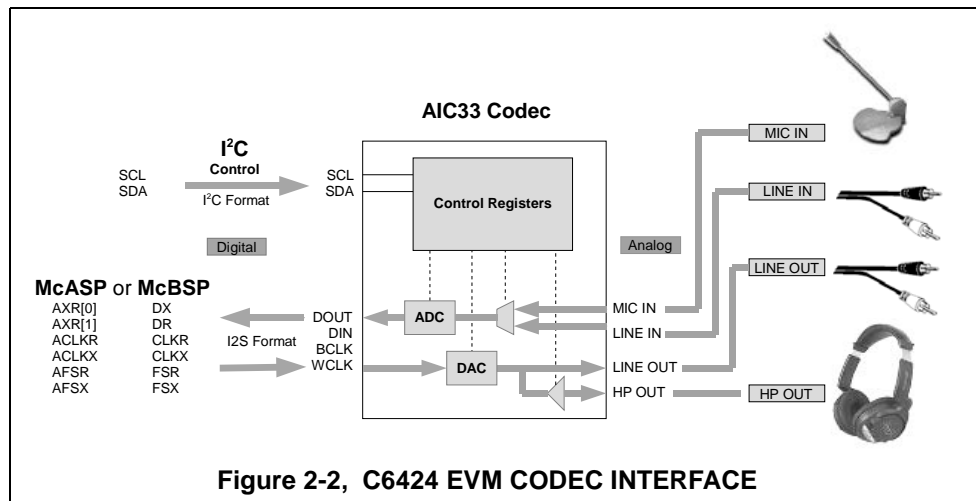
2.3 AIC33 Interface

The EVM uses a Texas Instruments TLV320AIC33 stereo codec for input and output of audio signals. The codec samples analog signals on the microphone or line inputs and converts them into digital data so it can be processed by the DSP. When the DSP is finished with the data it uses the codec to convert the samples back into analog signals on the line output so the user can hear the output.

The codec communicates using two serial channels, one to control the codec's internal configuration registers and one to send and receive digital audio samples. The I²C bus is used as the unidirectional control channel. The control channel is generally only used when configuring the codec, it is typically idle when audio data is being transmitted,

The default configuration is to use the McBSP is used as the bi-directional data channel. However, optionally the McASP can be used to drive the data channel. Data channel selection is controller via an on board I²C expander. All audio data flows through the data channel. Many data formats are supported based on the three variables of sample width, clock signal source and serial data format. The EVM examples generally use a 16-bit sample width with the codec in master mode so it generates the frame sync and bit clocks at the correct sample rate without effort on the DSP side.

The codec has a fixed clock from a 12 Mhz. source. The internal sample rate generate subdivides the 12 MHz clock to generate common frequencies such as 48KHz and 8KHz. The sample rate is set by a codec register. The figure below shows the codec interface on the C6424 EVM.



Spectrum Digital, Inc

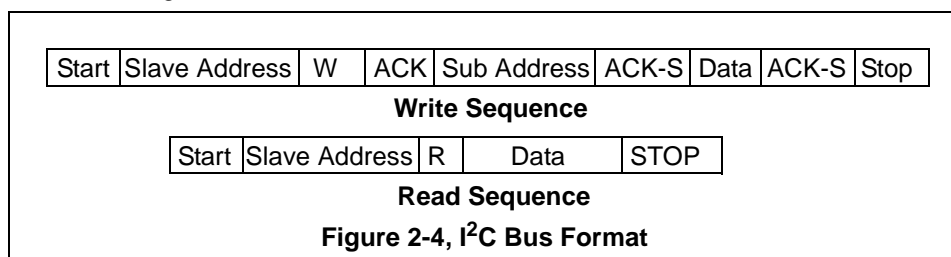
2.4 Ethernet Interface

The C6424 integrates an ethernet MAC on chip. The EVM supports RMII and MII protocols. The mode of operation is switch selectable via SW3. This interface is routed to the PHY via CBT switches. The EVM uses an Micrel KS8001L PHY. The 10/100 Mbit interface is isolated and brought out to a RJ-45 standard ethernet connector, P3. The PHY directly interfaces to the C6424. The ethernet address is stored in the I²C serial ROM during manufacturing.

The RJ-45 has 2 LEDs integrated into its connector. The LEDs are green and yellow and indicate the status of the ethernet link. The green LED, when on, indicates link and when blinking indicates link activity. The yellow LED, when illuminated, indicates full duplex mode.

2.5 I²C Interface

The I²C bus on the C6424 is ideal for interfacing to the control registers of many devices. On the C6424 EVM the I²C bus is used to configure the stereo Codec, I/O expanders. An I²C ROM is also interfaced via the serial bus. The format of the bus is shown in the figure below.



The addresses of the on board peripherals are shown in the table below.

Table 1: I²C Memory Map

Device	Address	R/W	Device	Function
PCF 8574A	0x38	R/W	U10	User Input
PCF 8574A	0x39	R/W	U11	User LEDs
PCF 8574A	0x3A	R/W	U13	PLL, User I/O
PCF8574A	0x3B	R/W	U64	User I/O
TLV320AIC33	0x1B	R/W	U43	CODEC
24WC256	0x50	R/W	U25	I ² C EEPROM

2.5.1 I/O Expanders

The C6424 EVM uses four I²C expanders to handle various bit I/O functions. Each of these is an 8 bit I/O expander, a PCF8574A. At Power Up Reset the expanders are initialized to 0xFF, all ones. The functions for each of the I/O expanders are shown in the tables below.

Table 2: U10 I/O Expander

Pin Number	Function	Description
P0	Jumper JP1	Read only user jumper
P1	SW7 Slide Switch	Read only slide switch
P2	Reserved	None
P3	Reserved	None
P4	SW4-1	Read only user switch
P5	SW4-2	Read only user switch
P6	SW4-3	Read only user switch
P7	SW4-4	Read only user switch

Table 3: U11 I/O Expander

Pin Number	Function	Description
P0	User LED DS1	0=Turns LED on, 1=Turns LED off
P1	User LED DS2	0=Turns LED on, 1=Turns LED off
P2	User LED DS3	0=Turns LED on, 1=Turns LED off
P3	User LED DS4	0=Turns LED on, 1=Turns LED off
P4	VLYNQ Reset	0=Removes Reset, 1=Applies Reset
P5	Reserved	None
P6	User I/O DC_P2	To daughter card, DC_P2 Pin 81
P7	User I/O DC_P2	To daughter card, DC_P2 Pin 82

Spectrum Digital, Inc

Table 4: U13 I/O Expander

Pin Number	Function	Description
P0	User I/O	Daughter Card, DC_P2 Pin 87
P1	User I/O	Daughter Card, DC_P2 Pin 88
P2	User I/O	Daughter Card, DC_P2 Pin 85
P3	User I/O	Daughter Card, DC_P2 Pin 84
P4	Reserved	
P5	Reserved	
P6	Reserved	
P7	Reserved	

Table 5: U64 I/O Expander

Pin Number	Function	Description
P0	McBSP_Enable to AIC23	* 1=Enable, 0=Disable
P1	McASP_Enable to AIC23	* 0=Enable, 1=Disable
P2	SPDIF Enable	* 0=Enable, 1=Disable
P3	Reserved	None
P4	Reserved	None
P5	Reserved	None
P6	Reserved	None
P7	Core Voltage Select	0 = 1.05 Volt, 1 = 1.2 Volt

* only one should be enabled at a time

2.5.2 I²C EEPROM

The C6424 EVM incorporates an I²C eeprom that can be used for booting or general purpose storage.

This eeprom is also used to store the ethernet MAC address and the board's revision. The MAC address is also labeled on the board. Care should be taken not to erase these items when user information is stored in the eeprom. Spectrum Digital uses addresses 0x7F00 to 0x7FFF for manufacturing information. This information is shown in the table below.

Table 6: C6424 MAC Addresses

Address	Contents
0x7F00	EMAC Address 0 (most significant)
0x7F01	EMAC Address 1
0x7F02	EMAC Address 2
0x7F03	EMAC Address 3
0x7F04	EMAC Address 4
0x7F05	EMAC Address 5
0x7F06	Reserved
0x7F07	Board Revision

2.6 S/PDIF Analog, and Optical Interfaces

The McBSP's FSR pin on the C6424 can be configured to operate as a S/PDIF transmitter. The C6424 EVM supports both analog and optical interfaces. The analog S/PDIF output pin is routed to a driver and filter circuit before being output on J10. I²C Expander U64 output P2 is used to enable the S/PDIF interface. When S/PDIF is selected on the expander (P2=0), the McASP enable should be disabled and the McBSP enable should be disabled. Another driver is used to interface the optical transmitter P14. When the S/PDIF interface is enabled the TLV320AIC33 codec is disabled, the WCLK should be disabled prior to enabling the S/PDIF output.

The McBSP interface can be disabled for daughter card use by pulling the AIC_ENABLEn signal high from the daughter card connector.

Spectrum Digital, Inc

2.7 Daughter Card Interfaces

The EVM provides expansion connectors that can be used to accept plug-in daughter cards. The daughter card allows users to build on their EVM platform to extend its capabilities and provide customer and application specific I/O. The expansion connectors are for all major interfaces including memory, peripherals, and video expansion.

The pin outs for this interface are documented in Section 3.

The connectors provide access to the DSP's EMIF signals to interface with memories and memory mapped devices. The video capture port is brought out to the daughter card interface.

Several signals are used to disable the on board video peripherals so that they can be used by the expansion connector. The table below indicates the operation of these signals.

Table 7: Daughter Card Interface

Signal	Function
AIC33_ENABLEn	Disconnects CPU from on board codec
EMADD_ENABLEn	Disables upper on board EMIF address lines
MEM_EMD7-0_ENABLEn	Disables CPU from on board data bus D0-D7
MEM_EMD15-8_ENABLEn	Disables CPU from on board data bus D15-D8
ENET_ENABLEn	Disconnects CPU from on board ethernet PHY
RS232_ENABLEn	Disconnects CPU from on board UART

Other than the buffering, most daughter card signals are not modified on the board.

2.8 C6424 Core CPU Clock

The C6424 EVM uses a 27 Megahertz crystal to generate the input clock. The C6424 has an internal PLL which can multiply the input clock to generate the internal clock. The PLL multiplier is set via software on the C6424 device.

2.9 C6424 Core Voltage Select

The C6424 EVM has the ability to adjust the core voltage between 1.2 volts and 1.05 volts. an I/O expander is used to control this I²C feature.

Chapter 3

Physical Description

This chapter describes the physical layout of the C6424 EVM and its interfaces.

Topic	Page
3.1 Board Layout	3-3
3.2 Connectors	3-4
3.2.1 J10, S/PDIF Out	3-5
3.2.2 J16, +5V Input	3-5
3.2.3 J20, Mini PCI Interface	3-6
3.2.4 J501, Embedded Mini USB Emulation Interface	3-7
3.2.5 P3, Ethernet Interface	3-7
3.2.6 P4, PCI Connector	3-8
3.2.7 P8, RS-232 UART	3-10
3.2.8 P10, Audio Line In Connector	3-11
3.2.9 P11, Microphone In Connector	3-11
3.2.10 P12, Headphone Out Connector	3-11
3.2.11 P13, Audio Line Out Connector	3-12
3.2.12 P14, S/PDIF Out (Optical)	3-12
3.2.13 DC_P1, Memory/Video Expansion	3-13
3.2.14 DC_P2, Peripheral Expansion	3-14
3.2.15 DC_P3, VLYNQ Connector	3-15

Spectrum Digital, Inc

Topic	Page
3.3 Jumpers	3-15
3.3.1 JP1 Jumper	3-16
3.3.2 JP2 Jumper	3-16
3.3.3 JP3 Jumper	3-16
3.3.4 JP4 Jumper	3-16
3.4 LEDs	3-17
3.5 Switches	3-17
3.5.1 SW1, Bootload Mode Selections	3-18
3.5.2 SW2, Bootload Configuration Select	3-19
3.5.3 SW3, EMIF Data Select	3-19
3.5.4 SW4, 4 Position User Readable	3-19
3.5.5 SW5, Power On Reset Switch	3-19
3.5.6 SW6, Reset Switch	3-19
3.5.7 SW7, Slide Switch	3-20
3.6 Test Points	3-21

3.1 Board Layout

The C6424 EVM is a 8.75 x 4.5 inch (210 x 115 mm.) ten (10) layer printed circuit board which is powered by an external +5 volt only power supply. Figure 3-1 shows the layout of the C6424 EVM.

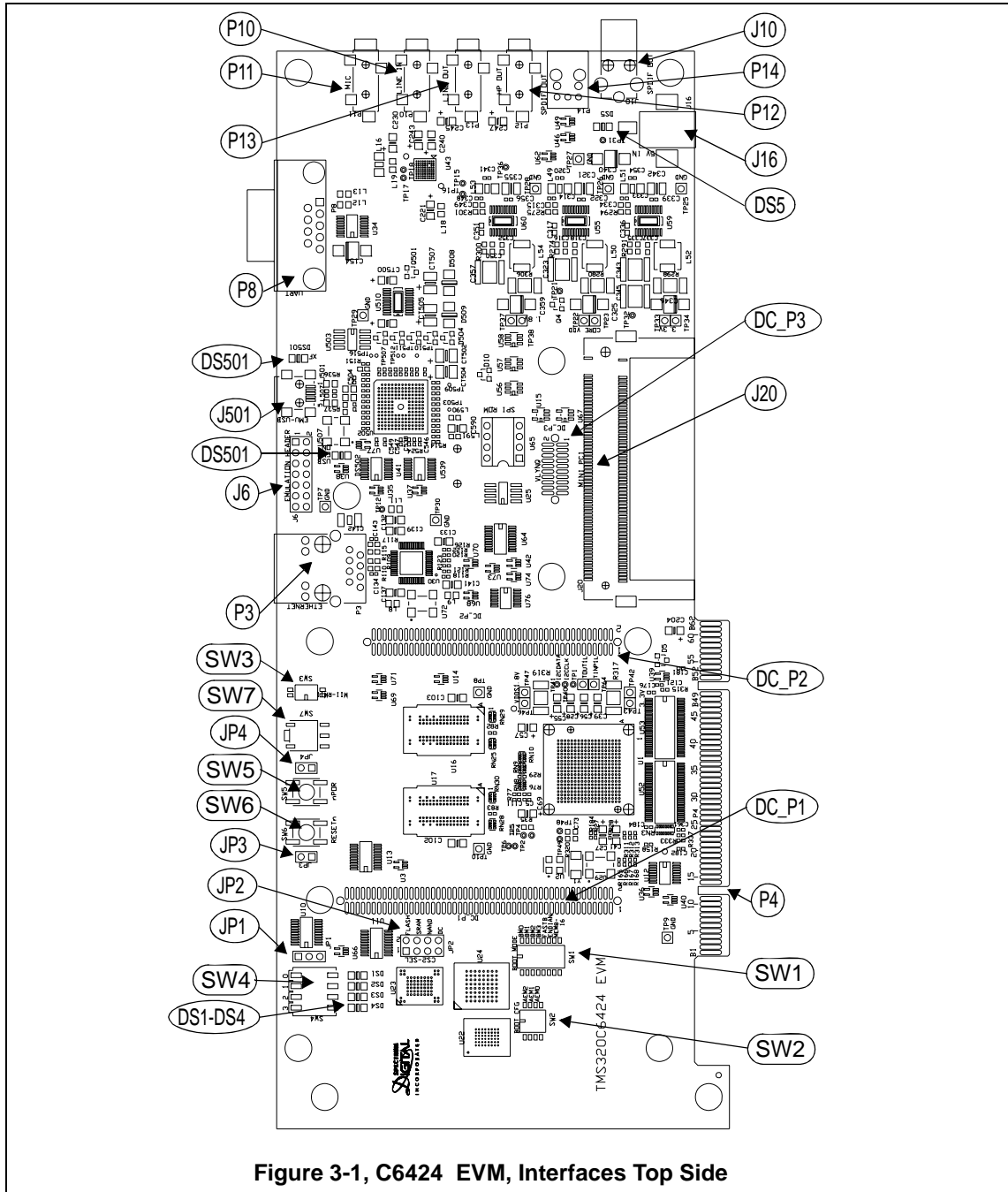


Figure 3-1, C6424 EVM, Interfaces Top Side

Spectrum Digital, Inc

3.2 Connectors

The EVM has twenty three (23) connectors providing interfaces to various peripherals. These connectors are described in the following sections.

Table 1: Connectors

Connector	Size	Function
J6	14	External Emulation Header
J10	RCA	S/PDIF Out
J16	2.5 mm	+5V In
J20	2 x 62	Mini PCI Interface
J501	Mini USB	Embedded USB Emulation Interface
P3	RJ-45	Ethernet
P4	PCI	PCI
P8	9 Pin D-sub	RS-232 UART
P10	3.5 mm	Stereo Line In
P11	3.5 mm	Microphone In
P12	3.5 mm	Headphone Out
P13	3.5 mm	Stereo Line Out
P14	Optical	S/PDIF Out
DC_P1	2x50	Expansion
DC_P2	2x45	Expansion
DC_P3	2x10	Expansion

* Not populated

3.2.1 J10, S/PDIF Out

J10 is an RCA jack used as an analog output from the McBSP FSR signal on the DSP. This connector brings out the S/PDIF signal. Do **NOT** plug into this connector with the power on. The figure below shows this connector as viewed from the card edge.

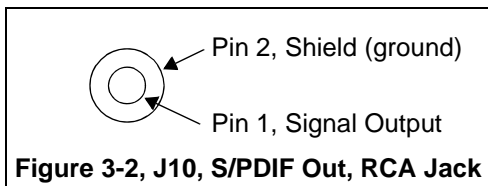
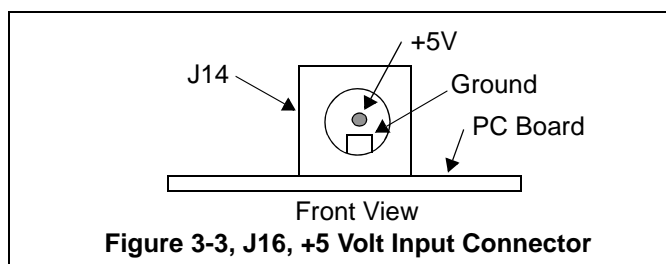


Table 2: J10, S/PDIF, RCA Jack

Pin #	Signal Name
1	S/PDIF Analog output
2	GND

3.2.2 J16, +5V Input

Connector J16 is the input power connector. This connector bring in +5 volts to the EVM. This is a 2.5 mm. jack. The figure below shows this connector as viewed from the card edge.



Spectrum Digital, Inc

3.2.3 J20, Mini PCI Interface

Connector J20 provides a mini-PCI on the C6424 EVM. Do **NOT** plug into this connector with the power on. The table below shows the signals on this connector.

Table 3: J16, VLYNQ Card Interface

Pin #	Signal
2,3,4,5,6,7,8,10,11, 12,13,15,17,18,29, 30,38,39,47,49,51, 53,55,57,71,73,75, 77,80,82,84,86,93, 98,100,104,105, 106,107,108,109, 113,115,116,117, 118,120,122,123, 124	NC
9,14,20,23,25,27 32,33,34,35,37,41, 42,44,45,46,48,50, 52,54,56,58,60,62, 64,66,68,69,72,74, 76,78,79,81,83,85, 87,90,91,92,94,95, 96,99,101,102, 110,114,119	GND
111	VCC_1.8V
1,19,28,31,40,63, 70,88,89	VCC_3.3V
97,103	VCC_5V
16	VLYNQ_CLK
21	VLYNQ_RXD0
22	VLYNQ_RXD1
24	VLYNQ_SCRUN
26	VLYNQ_RESET
59	VLYNQ_RXD2
61	VLYNQ_RXD3
36	VLYNQ_TXD0
65	VLYNQ_TXD2
67	VLYNQ_TXD3
43	VLYNQ_TXD1

3.2.4 J501, Embedded Mini USB Emulation Interface

This connector allows the user to run software development tools and emulation without an external emulator. The signals on this connector are shown in the table below.

Table 4: J501, Embedded Mini USB Emulation Interface

Pin #	Signal Name
1	VBUS
2	D-
3	D+
4	ID (not used)
5	Ground

3.2.5 P3, Ethernet Interface

The P3 connector is used to provide an 10/100 Mbps Ethernet interface. This is a standard RJ-45 connector. The pinout for the P3 connector is shown in the table below.

Table 5: P3, Ethernet Interface

Pin #	Signal	Pin #	Signal
1	LXT_TDP	2	LXT_TDM
3	LXT_RDP	4	LXT_TDCT
5	NC	6	LXT_RDM
7	NC	8	GND

Two LEDs are embedded into the connector to report link status.

Table 6: Ethernet LEDs

LED #	Color
LED1	Green
LED2	Yellow

Spectrum Digital, Inc

3.2.6 P4, PCI Connector

The P4 connector is a card edge PCI interface. This connector has an “A” and “B” side. Because of the card seating notches the pin numbers are not contiguous. The “B” side is the top component side. The I/O direction field is referenced from the PCI slot.

Table 7: P4, PCI Connector, “A” Side

Pin	Signal	I/O	Description	Pin	Signal	I/O	Description
1	TRST-		Not Used	2	+12 Volts		Not Used
3	TMS		Not Used	4	TDI	I/O	Tied to TDO
5	+5 Volts		+5 Volts Power	6	INTA-	O	Interrupt Out
7	INTC-	O	Interrupt Out	8	+5 Volts		+5 Volts Power
9	Rsvd.0		Not Used	10	+V I/O		Not Used
11	Rsvd.1		Not Used	12	Key.1		Key
13	Key.2		Key	14	+3.3 Vaux		Not Used
15	RST-	I	PCI_Resetn	16	+V I/O	O	Not Used
17	GNT-	O	Grant-	18	GND		Ground
19	PME-			20	AD30	I/O/Z	Address/Data 30
21	+3.3 Volts		Not Used	22	AD28	I/O/Z	Address/Data 28
23	AD26	I/O/Z	Address/Data 26	24	GND		
25	AD24	I/O/Z	Address/Data 24	26	IDSEL	I	Initialization Device Select
27	+3.3 Volts		Not Used	28	AD22	I/O/Z	Address/Data 22
29	AD20	I/O/Z	Address/Data 20	30	GND		Ground
31	AD18	I/O/Z	Address/Data 18	32	AD16	I/O/Z	Address/Data 16
33	+3.3 Volts		Not Used	34	FRAME-	I	Frame
35	GND		Ground	36	TRDY-	I/O/Z	Target Ready
37	GND		Ground	38	STOP-	I/O/Z	Stop Direction
39	+3.3 Volts		Not Used	40	SDONE	O	Done
41	SBO-			42	GND		Ground
43	PAR	I/O/Z	Parity	44	AD15	I/O/Z	Address/Data 15
45	+3.3 Volts		Not Used	46	AD13	I/O/Z	Address/Data 13
47	AD11	I/O/Z	Address/Data 11	48	GND		Ground
49	AD9	I/O/Z	Address/Data 9	50	Key.3		Key
51	Key.4		Key	52	C/BE0		Command/Byte Enable0
53	+3.3 Volts		Not Used	54	AD6	I/O/Z	Address/Data 6
55	AD4	I/O/Z	Address/Data 4	56	GND		Ground
57	AD2	I/O/Z	Address/Data 2	58	AD0	I/O/Z	Address/Data 0
59	+V I/O		Not Used	60	REQ64-		Not Used
61	+5 Volts		+5 Volts Power	62	+5 Volts		+5 Volts Power

The signals on the “B” side of the connector are shown in the table below.

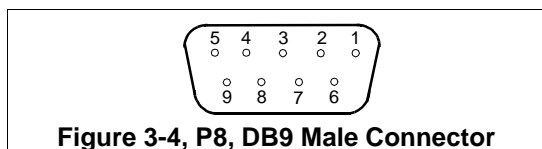
Table 8: P4, PCI Connector, “B” Side

Pin	Signal	I/O	Description	Pin	Signal	I/O	Description
1	-12 Volts		Not Used	2	TCK	I	Not Used
3	GND		Ground	4	TDO	I	Tied to TDO
5	+5 Volts		+5 Volt Power	6	+5 Volts	I	+5 Volt Power
7	INTB-		Interrupt OUT	8	INTD-		Interrupt Out
9	PRSNT1-	O	Power Requirement	10	Rsvd.2		
11	PRSNT2-	O	Power Requirement	12	Key.5		Key
13	Key.6		Key	14	Rsvd.3		
15	GND		Ground	16	CLK		System Clock
17	GND		Ground	18	REQ-		
19	+V I/O		Not Used	20	AD31	I/O/Z	Address/Data 31
21	AD29	I/O/Z	Address/Data 29	22	GND		Ground
23	AD27	I/O/Z	Address/Data 27	24	AD25	I/O/Z	Address/Data 25
25	+3.3 Volts		Not Used	26	C/BE3	I/O/Z	Command/Byte Enable 3
27	AD23	I/O/Z	Address/Data 23	28	GND		Ground
29	AD21	I/O/Z	Address/Data 21	30	AD19	I/O/Z	Address/Data 19
31	+3.3 Volts		Not Used	32	AD17	I/O/Z	Address/Data 17
33	C/BE2-	I/O/Z	Command/Byte Enable 2	34	GND		Ground
35	IRDY-	I	Initiator Ready	36	+3.3 Volts		Not Used
37	DEVSEL-	I/O/Z	Device Select	38	GND		Ground
39	LOCK-	I	Resource Locked	40	PERR-	I/O/Z	Parity Error
41	+3.3 Volts		Not Used	42	SERR-	O	System Error
43	+3.3 Volts		Not Used	44	C/BE1-	I/O/Z	Command/Byte Enable 1
45	AD14	I/O/Z	Address/Data 14	46	GND		Ground
47	AD12	I/O/Z	Address/Data 12	48	AD10	I/O/Z	Address/Data 10
49	M66EN	O	66 Mhz Enable	50	Key.7		Key
51	Key.8		Key	52	AD8	I/O/Z	Address/Data 8
53	AD7	I/O/Z	Address/Data 7	54	+3.3 Volts		Not Used
55	AD5	I/O/Z	Address/Data 5	56	AD3	I/O/Z	Address/Data 3
57	GND		Ground	58	AD1	I/O/Z	Address/Data 1
59	+V I/O		Not Used	60	ACK64-		Not Used
61	+5 Volts		+5 Volt Power	62	+5 Volts		+5 Volt Power

Spectrum Digital, Inc

3.2.7 P8, RS-232 UART Connector

The C6424 EVM has an RS-232 connector which brings out the SCI transmit and receive signals to be used as UART. This UART uses the MAX3221 RS-232 line driver and is routed to a male 9 pin D-connector, P8. The pin positions for the P8 connector as viewed from the edge of the printed circuit board are shown below.



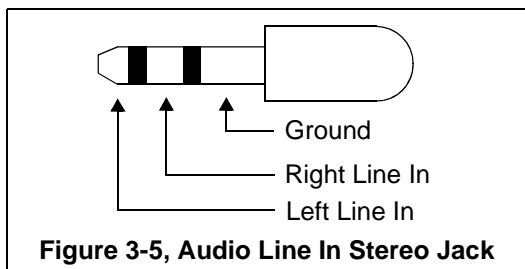
The pin numbers and their corresponding signals are shown in the table below. This corresponds to a standard dual row to DB-9 connector interface used on personal computers.

Table 9: P8, RS-232 UART Pinout

Pin #	Signal Name
1	No Connect
2	RXD
3	TXD
4	No Connect
5	GND
6	No Connect
7	No Connect
8	No Connect
9	No Connect

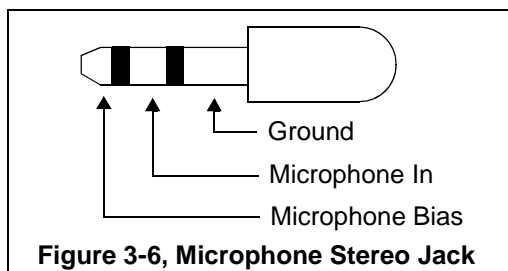
3.2.8 P10, Audio Line In Connector

The audio line in is a stereo input. The input connector is a 3.5 mm stereo jack. The signals on the mating plug are shown in the figure below.



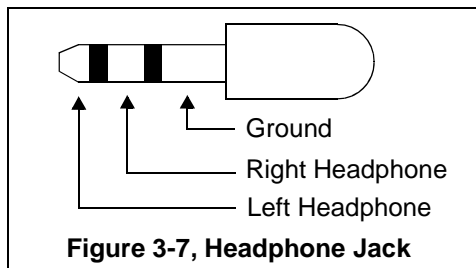
3.2.9 P11, Microphone Connector

The input is a 3.5 mm. stereo jack. Both inputs are connected to the microphone so it is monaural. The signals on the plug are shown in the figure below.



3.2.10 P12, Headphone Connector

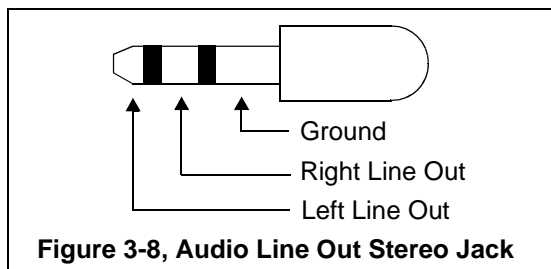
Connector P12 is a headphone/speaker jack. It can drive standard headphones or a high impedance speaker directly. The standard 3.5 mm jack is shown in the figure below.



Spectrum Digital, Inc

3.2.11 P13, Audio Line Out Connector

The audio line out is a stereo output. The output connector is a 3.5 mm stereo jack. The signals on the mating plug are shown in the figure below.



3.2.12 P14, S/PDIF Out (Optical)

P14 is an optical transmitter connector used as an output from the McBSP FSR signal on the C6424 DSP. This connector brings out an optical S/PDIF signal. Do **NOT** plug into this connector with the power on. The figure below shows this connector as viewed from the card edge.

3.2.13 DC_P1, Memory/Video Expansion-

Table 10: DC_P1, Memory/Video Expansion

Pin	Signal	Conn	Pin	Signal	Conn
1	GROUND		2	GROUND	
3	PCLK_GP[54]		4	MEM_D15-8_ENABLE	
5	RESERVED		6	GROUND	
7	EM_D[12]_GP[39]		8	EM_D[11]_GP[40]	
9	EM_D[13]_GP[38]		10	EM_D[10]_GP[41]	
11	EM_D[14]_GP[37]		12	EM_D[9]_GP[42]	
13	EM_D[15]_GP[36]		14	EM_D[8]_GP[43]	
15	GROUND		16	GROUND	
17	RNW_GP[35]		18	EM_A[21]_GP[34]	
19	VD_GP[53]		20	HD_GP[52]	
21	EM_A[17]_GP[47]		22	EM_A[16]_GP[48]	
23	EM_A[18]_GP[46]		24	EM_A[15]_GP[49]	
25	EM_A[19]_GP[45]		26	EM_A[14]_GP[50]	
27	EM_A[20]_GP[44]		28	EM_A[13]_GP[51]	
29	GROUND		30	GROUND	
31	VCLK_GP[31]		32	EM_CS4n_GP[32]	
33	GROUND		34	GROUND	
35	VPBECLK_GP[30]		36	EM_CS5n_GP[33]	
37	GROUND		38	GROUND	
39	GP[26]_BOOTMODE3		40	GP[26]_FASTBOOT	
41	GP[24]_BOOTMODE2		42	GP[27]	
43	GP[23]_BOOTMODE1		44	GP[28]	
45	GP[22]_BOOTMODE0		46	GP[29]	
47	GROUND		48	GROUND	
49	EM_D[3]_GP[17]		50	EM_D[4]_GP[18]	
51	EM_D[2]_GP[16]		52	EM_D[5]_GP[19]	
53	EM_D[1]_GP[15]		54	EM_D[6]_GP[20]	
55	EM_D[0]_GP[14]		56	EM_D[7]_GP[21]	
57	GROUND		58	GROUND	
59	EM_A[3]_GP[11]		60	EM_A[4]_GP[10]_(AEAW2)	
61	EM_A[1]_(ALE)_GP[9]_(AEAW1)		62	EM_A[2]_(CLE)_GP[8]_(AEAW0)	
63	EM_BA[0]_GP[6]_(AEM1)		64	EM_A[0]_GP[7]_(AEM2)	
65	EM_BA[1]_GP[6]_(AEM0)		66	EM_CS2n_GP[12]	
67	EM_WAIT_(RDY/BSTn)		68	EM_CS3n_GP[13]	
69	GROUND		70	GROUND	
71	EM_A[5]_GP[96]		72	EM_A[9]_GP[92]	
73	EM_A[6]_GP[95]		74	EM_A[10]_GP[91]	
75	EM_A[7]_GP[94]		76	EM_A[11]_GP[90]	
77	EM_A[8]_GP[93]		78	EM_A[12]_GP[89]	
79	EM_WEn		80	EM_OEn	
81	GROUND		82	GROUND	
83	MEM_D7-0_ENABLE		84	CLKOUT0_PWM2_GP[84]	
85	EMADD_ENABLE		86	GROUND	
87	RESETn		88	GP[4]_PWM1	
89	SYS_RESETEn		90	I2C_INT_ENABLEn	
91	VCC_1V8		92	VCC_1V8	
93	GROUND		94	GROUND	
95	VCC_3V3		96	VCC_3V3	
97	GROUND		98	GROUND	
99	VCC_5V		100	VCC_5V	

Spectrum Digital, Inc

3.2.14 DC_P2, Peripheral Expansion

Table 11: DC_P2, Peripheral Expansion

Pin	Signal	Conn	Pin	Signal	Conn
1	GROUND		2	GROUND	
3	VCC_5V		4	VCC_5V	
5	VCC_3V3		6	VCC_3V3	
7			8	GROUND	
9	CLKS1_TINPOL_GP[98]		10	CLKS0_TINPOL_GP[97]	
11	GP[00]		12	GP[01]	
13	GP[02]		14	GP[03]	
15	RS232_ENABLEn		16	GROUND	
17	URXD0_GP[85]		18	URTS0_PWM0_GP[88]	
19	UTXD0_GP[86]		20	UCTS0_GP[87]	
21	GROUND		22	GROUND	
23	TINP1L_URXD1_GP[56]		24	TOUT1L_UTXD1_GP[55]	
25	GROUND		26	CAN_ENABLEn	
27	AUDIO_CLK		28	GROUND	
29	AXR0[3]_FSR0_GP[102]		30	AXR0[2]_FSX0_GP[103]	
31	AFSR0_DR0_GP[100]		32	AXR0[1]_DX0_GP[104]	
33	AHCLKR0_CLKR0_GP[101]		34	ACLKR0_CLKX0_GP[99]	
35	GROUND		36	GROUND	
37	I2C_CLK		38	I2C_DATA	
39	AIC33_ENABLEn		40	GROUND	
41	AXR0_FSR1_GP[106]		42	AMUTEIN0_FSX1_GP[109]	
43	AMUTE0_DR1_GP[110]		44	ACHLKX0_CLKR1_GP[108]	
45	ACLKX0_CLKX1_GP[106]		46	AFSX0_DX1_GP[107]	
47	GROUND		48	GROUND	
49	RESET_OUTn		50	SPARE	
51	SPARE		52	HCNTL0_MRXER_GP[76]	
53	HDS1n_RXD1_GP[79]		54	HDS2n_RXD0_GP[78]	
55	HINTn_RXD3_GP[82]		56	HRDYn_RXD2_GP[80]	
57	GROUND		58	HD09_COL_GP[67]	
59	HHWIL_RXDV_GP[74]		60	GROUND	
61	HD10_CRS_GP[68]		62	HRNW_RXCLK_GP[77]	
63	GROUND		64	GROUND	
65	HCSnMDC_GP[81]		66	HASn_MDIO_GP[83]	
67	GROUND		68	GROUND	
69	HD11_TXD3_GP[69]		70	HD12_TXD2_GP[70]	
71	HD13_TXD1_GP[71]		72	HD14_TXD0_GP[72]	
73	HCNTL1_TXEN_GP[75]		74	ENET_ENABLEn	
75	GROUND		76	GROUND	
77	SPARE		78	HD15_TXCLK_GP[73]	
79	GROUND		80	GROUND	
81	USER_I2C_IO.A0P6		82	USER_I2C_IO.A0P7	
83	SPARE		84	SPARE	
85	USER_I2C_IO.A1P2		86	USER_I2C_IO.A1P3	
87	USER_I2C_IO.A1P0		88	USER_I2C_IO.A1P1	
89	GROUND		90	GROUND	

3.2.15 DC_P3, VLYNQ Connector

The DC_P3 connector allows the user to connect the VLYNQ interface to other logic. The pinout for the DC_P3 connector is shown in the table below.

Table 12: DC_P3, VLYNQ Header

Pin #	Signal	Conn	Pin #	Signal	Conn
1	HD00_VLYNQ_SCRUN_GP[58]		2	VLYNQ_CLOCK_GP[57]	
3	GROUND		4	GROUND	
5	HD01_VLYNQ_RXD0_GP[59]		6	HD05_VLYNQ_TXD0_GP[63]	
7	HD02_VLYNQ_RXD1_GP[60]		8	HD06_VLYNQ_TXD1_GP[64]	
9	GROUND		10	GROUND	
11	VCC_3V3		12	DC_P3_VLYNQ_RESETh	
13	HD03_VLYNQ_RXD2_GP[61]		14	HD07_VLYNQ_TXD2_GP[65]	
15	HD04_VLYNQ_RXD3_GP[62]		16	HD08_VLYNQ_TXD3_GP[66]	
17	GROUND		18	GROUND	
19	VCC_5V		20	VCC_5V	

3.3 Jumpers

The C6424 EVM has four (4) jumpers which are used to make certain logic or feature determinations on the board. The function of each jumper is described in the table below.

Table 13: Jumpers

Jumper #	Function	Size
JP1	User Jumper	1x2
JP2	CS2 Select	2x4
JP3 *	Reset	1x2
JP4 *	Power Up Reset	1x2

* Not populated

Spectrum Digital, Inc

3.3.1 JP1 Jumper

Jumper JP1 is a read only user accessible input. It can be read by the I²C expander U10, bit 0. When the jumper is in the 1-2 position a logic “1” is read. When the jumper is in the 2-3 position a logic “0” is read.

3.3.2 JP2 Jumper

Jumper JP2 is a jumper bank used to select the routing of the CS2 signal. It can be routed to Flash ROM, SRAM, NAND Flash, and daughter card connector. Only one of these 1-2 selections should be made. The positions are shown in the figure below.

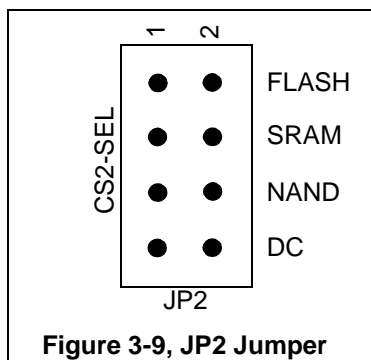


Figure 3-9, JP2 Jumper

3.3.3 JP3 Jumper

Jumper JP3 is a jumper used to allow external switches to interface to the C6424 power up reset signal.

3.3.3 JP4 Jumper

Jumper JP4 is a jumper used to allow external switches to interface to the C6424 reset signal.

3.4 LEDs

The C6424 EVM has eight (8) LEDs. Four of these LEDs (DS1-4) are under user control and addressed over the I²C bus. LED DS5 indicates the presence of +5 volts on the board. The remaining LEDs, DS501 and DS502 indicate embedded USB status. DS502 is on when embedded USB emulation is selected and off when the external JTAG emulator is plugged into connector J6. DS501 blinks as packets are sent to and from the embedded USB emulator. The LED functions are summarized in the table below.

Table 14: LEDs

LED #	Use	Color
DS1	User Defined	Green
DS2	User Defined	Green
DS3	User Defined	Green
DS4	User Defined	Green
DS5	+5V present	Red
DS501	Embedded Emulation Status	Green
DS502	Embedded/external EMU	Green

3.5 Switches

The C6424 EVM has seven (7) switches. These switches are used to create certain actions on the board or to select certain functions on the board. The switch functions are summarized in the table below.

Table 15: Switches

LED #	Function
SW1	Bootload Mode Select
SW2	C6424 Muxing Configuration
SW3	Ethernet Phy Mode Select
SW4	4 Position User Readable
SW5	Power On Reset
SW6	Reset
SW7	Slide Switch

Spectrum Digital, Inc

3.5.1 SW1, Bootload Mode Select

Switch SW1 is an 8 position switch used to select the source of the bootload. Seven (7) of the eight (8) positions are used. The selections are shown in the tables below.

Table 16: SW1, Bootload Mode Select

SW1[4:1]	SW1[5]	Auto Detected	Boot Description	Notes	DSPBOOTADDR default
0000	x	x	Emulation Boot In this mode, FASTBOOT setting is don't care (not used by bootloader code)	C6424 is master	0x0010 0000
0001	1*	0	HPI Boot	C6424 is slave	0x0010 0000
0001	1*	1	PCI Boot without auto-initialization	C6424 is slave	0x0010 0000
0010	1*	0	PCI Boot with auto-initialization	C6424 is slave	0x0010 0000
0010	1*	1	HPI Boot	C6424 is slave	0x0010 0000
0100	0	x	EMIFA ROM Direct Boot	C6424 is master	0x4200 0000
0100	1	x	EMIFA ROM Fast Boot	C6424 is master	0x0010 0000
0101	x	x	I2C Boot	C6424 is master	0x0010 0000
0110	1*	x	SPI Boot (McBSP peripheral)	C6424 is master	0x0010 0000
0111	1*	x	NAND Flash	C6424 is master	0x0010 0000
1000	x	x	UART	C6424 is master	0x0010 0000
1011	x	x	EMAC Boot through secondary bootloader	C6424 is slave	0x0010 0000

x = don't care, * these boot modes must be accompanied with FASTBOOT = 1.

Position 6 of switch SW1 is used to select the endianness mode of the memory. The selections are shown in the table below.

Table 17: SW1, Position 6, Endianness Select

Position Description	Position	Endianness
Endianness Select	0	Big Endian
Endianness Select	1	Little Endian

Position 7 of switch SW1 is used to select the width of the memory. The selections are shown in the table below.

Table 18: SW1, Position 7, Memory Width Select

Position Description	Position	Memory Width
Memory Width Select	0	8 Bits
Memory Width Select	1	16 Bits

3.5.2 SW2, Bootload Configuration Select

Switch SW2 is an 4 position switch used to select the C6424 multiplexing options at reset. Three (3) of the four (4) positions are used. The selection are shown in the table below.

Table 19: SW2, Bootload Configuration Select

SW2[2:0] AEM2:0	Description
000	No EMIF
010	16 bit EMIF
101	8 bit EMIF - NAND flash

3.5.3 SW3, EMIF Data Select

Switch SW3 is used to select between data bus pins for the asynchronous EMIF controller. The functions of this switch are shown in the table below.

Table 20: SW3, EMDATA Select

Position	Function	Description
1	RMII/MII Select	Selects mode of Ethernet Phy 0=RMII, 1=MII
2	Reserved	

3.5.4 SW4, 4 Position User Readable

Switch SW4 is a 4 position bank of user readable switches via the I²C expander. The individual switches can be placed in any position and read by the user software from the expander. See the section on I²C expanders for more information.

3.5.5 SW5, Power On Reset Switch

Switch SW5 is a momentary switch that asserts power on reset to the C6424 device.

3.5.6 SW6, Reset Switch

Switch SW6 is a momentary switch that asserts a reset to the C6424 processor.

Spectrum Digital, Inc

3.5.7 SW7, Slide Switch

Switch SW7 is a 2 position slide switch used by demonstration software. The switch is read via a I²C expander. Refer to the I²C section for more information.

3.6 Test Points

The EVM has 42 test points. All test points appear on the top of the board. The following figure identifies the position of each test point. the next table list each test point and the signal appearing on that test point.

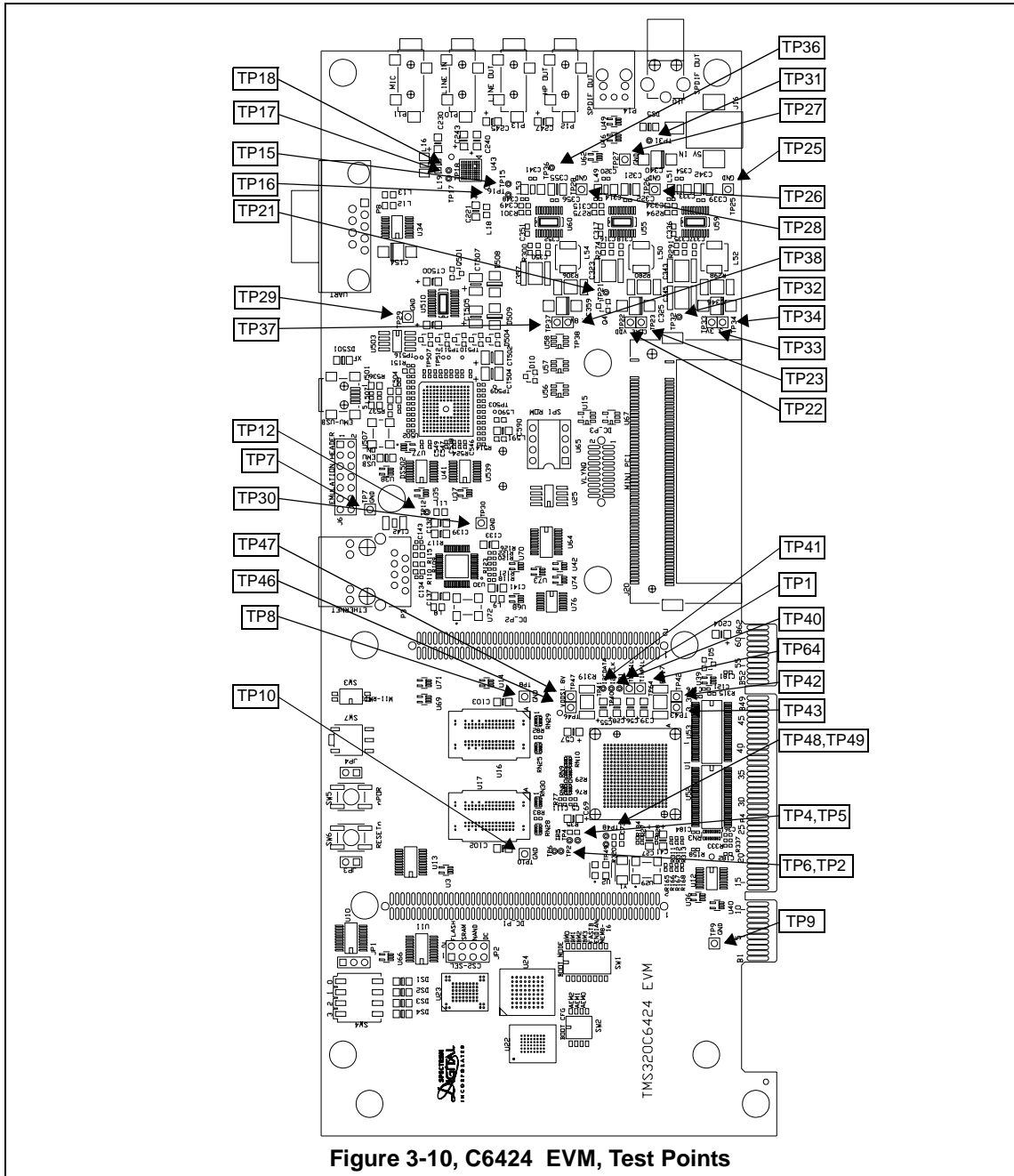


Figure 3-10, C6424 EVM, Test Points

Spectrum Digital, Inc

Table 21: C6424 EVM Test Points

Test Point #	Signal	Test Point #	Signal
TP1	RESETOUTn	TP26	GND
TP2	RSV4	TP27	GND
TP6	RSV5	TP28	GND
TP7	GND	TP29	GND
TP8	GND	TP30	GND
TP9	GND	TP31	VCC_5V
TP10	GND	TP32	3V3_PWR_OK
TP12	Ethernet PHY Interrupt Pin	TP36	1V8_PWR_OK
TP15	Codec MFP2 Pin	TP40	C6424 I2CCLK
TP16	Codec MPF3 Pin	TP41	C6424 I2CDATA
TP17	Codec GPIO1 Pin	TP61	TOUT1L
TP18	Codec GPIO2 Pin	TP64	TINP1L
TP21	CORE_PWR_OK	TP69	C6424 PWM1
TP25	GND		

Table 22: Power Pair Test Points

Power Pairs Input1	Power Pairs Input2	Power Domain	Resistance Between Inputs
TP4	TP5	DDR_VDDL	0.1 ohms
TP22	TP23	DSP_CORE_VDD	0.025 ohms
TP33	TP34	VCC_3V3	0.025 ohms
TP37	TP38	VCC_1V8	0.025 ohms
TP42	TP43	DVD_3V3	0.025 ohms
TP47	TP46	DVDD_1V8	0.025 ohms
TP48	TP49	PLL_PWR18	0.1 ohms
TP52	TP53	VDDA_1P1V	0.1 ohms

Appendix A

Schematics

This appendix contains the schematics for the C6424 EVM.

Spectrum Digital, Inc

SCHEMATIC CONTENTS

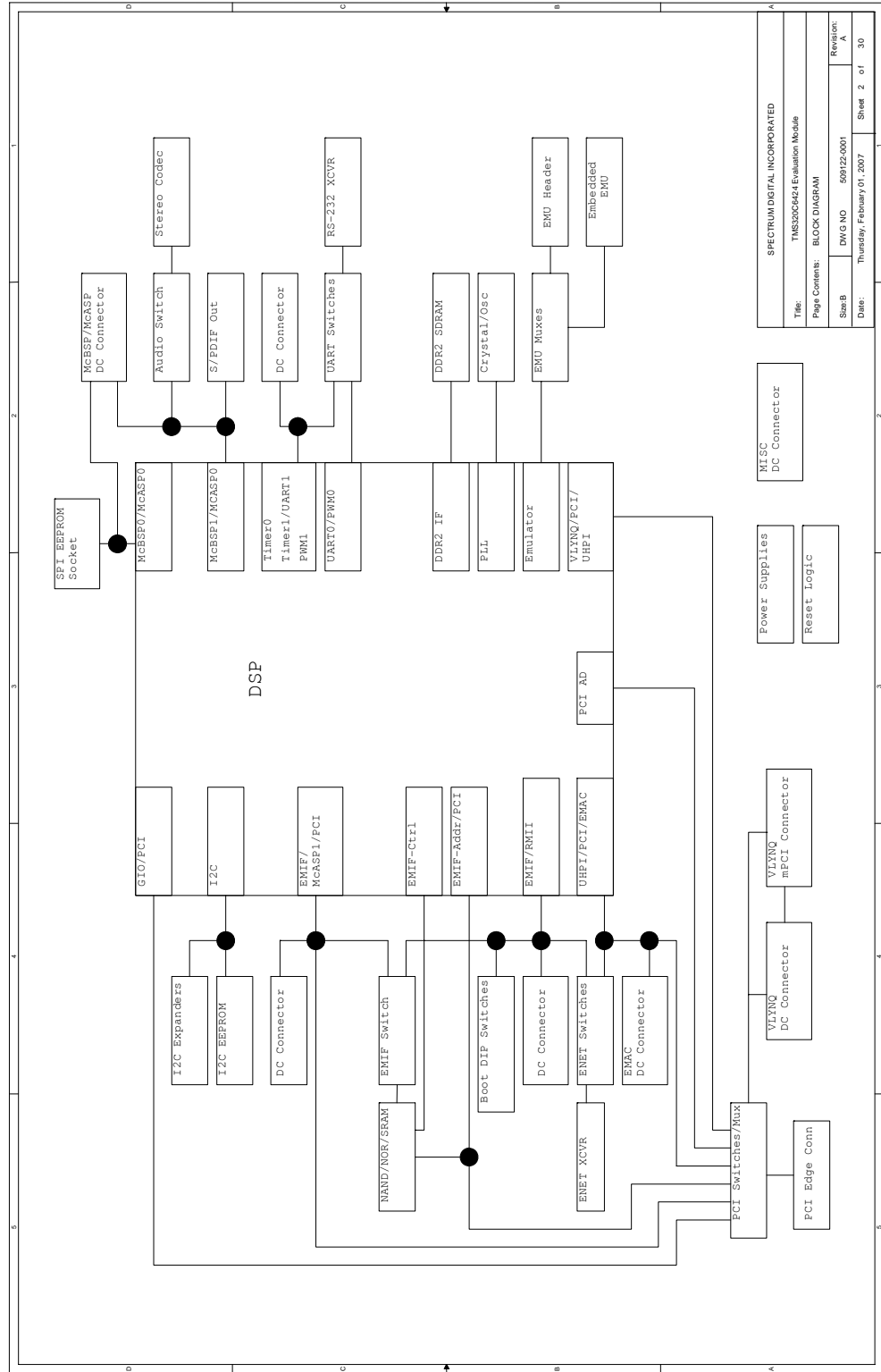
- SHEET01 - TITLE
- SHEET02 - BLOCK DIAGRAM
- SHEET03 - DSP CLKS/RST/EMU
- SHEET04 - EMULATION
- SHEET05 - DSP Serial/I2C
- SHEET06 - DSP EMIF/PCI/ENET
- SHEET07 - DSP DDR Interface
- SHEET08 - DSP GND-pins
- SHEET09 - DSP Power Pins
- SHEET10 - Boot DIP Switches
- SHEET11 - I2C Expanders
- SHEET12 - I2C Expanders 2
- SHEET13 - DDR2 Memories
- SHEET14 - EMIF Muxing
- SHEET15 - NAND-Flash/GRAM
- SHEET16 - NOR-Flash/EEPROM
- SHEET17 - ENET Muxing
- SHEET18 - ENET
- SHEET19 - RS232
- SHEET20 - PCI-Mux
- SHEET21 - PCI-Mux II
- SHEET22 - PCI-Connector
- SHEET23 - MPC VLYNQ Connector
- SHEET24 - AIC33
- SHEET25 - SPDIF
- SHEET26 - EMIF DC Connector
- SHEET27 - EMAC/MCBSP DC Conn.
- SHEET28 - VLYNQ/EMIF DC Conn.
- SHEET29 - RESET SUPERVISOR
- SHEET30 - POWER

I2C Address Table			
ADDRESS	HEX	BINARY	FUNCTION
0x38	00111000B	PCF8574	USER INPUT Expander - 0111 (A2) (A1) (A0)
0x39	00111001B	PCF8574	LED Expander - 0111 (A2) (A1) (A0)
0x3A	00111010B	PCF8574	IO Expander - 0111 (A2) (A1) (A0)
0x3B	00111011B	PCF8574	IO Expander - 0111 (A2) (A1) (A0)
0x50	01010000B	CAT24C256	EEPROM - 1010 (A2) (A1) (A0)
0x1B	00011011B	AIC33	AUDIO CODEC - 00110 (MFP1) (MFP0)

REV	DATE	BY	CHK	APP	DESCRIPTION
01	06/01/2006	R.R.F.			
02	06/01/2006	T.W.K.			
03	06/01/2006	R.R.F.			
04	06/01/2006	C.M.D.			
05	06/01/2006	R.R.F.			

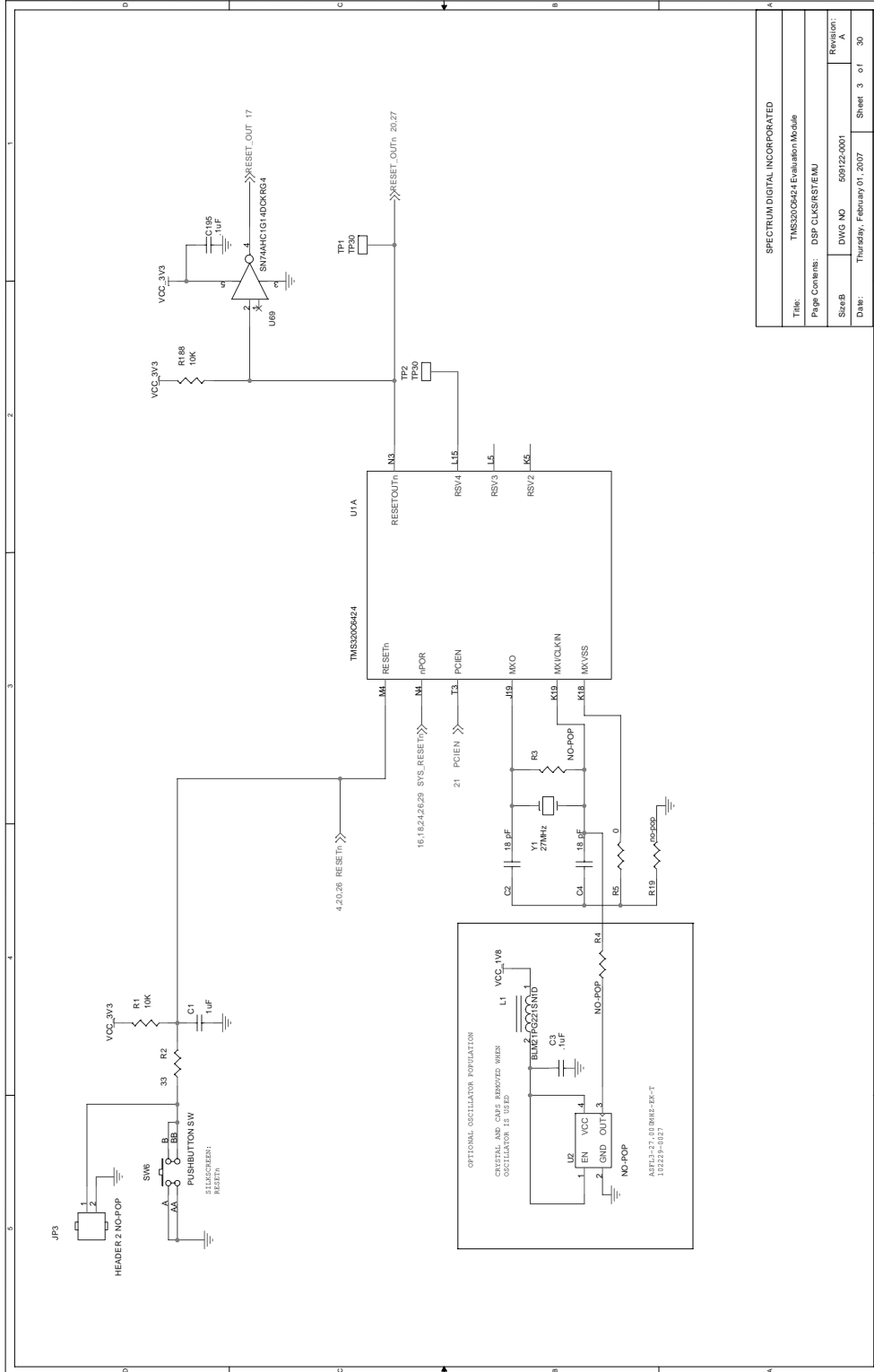
REV	DATE	BY	CHK	APP	DESCRIPTION
01	06/01/2006	R.R.F.			
02	06/01/2006	T.W.K.			
03	06/01/2006	R.R.F.			
04	06/01/2006	C.M.D.			
05	06/01/2006	R.R.F.			

SPECTRUM DIGITAL INCORPORATED	
Title:	TMS320C6424 Emulation Module
Page Contents:	TITLE SHEET
SizeB	DWG NO 599122-001
Date:	Thursday, February 01, 2007
Revision:	A
Sheet 1 of 30	

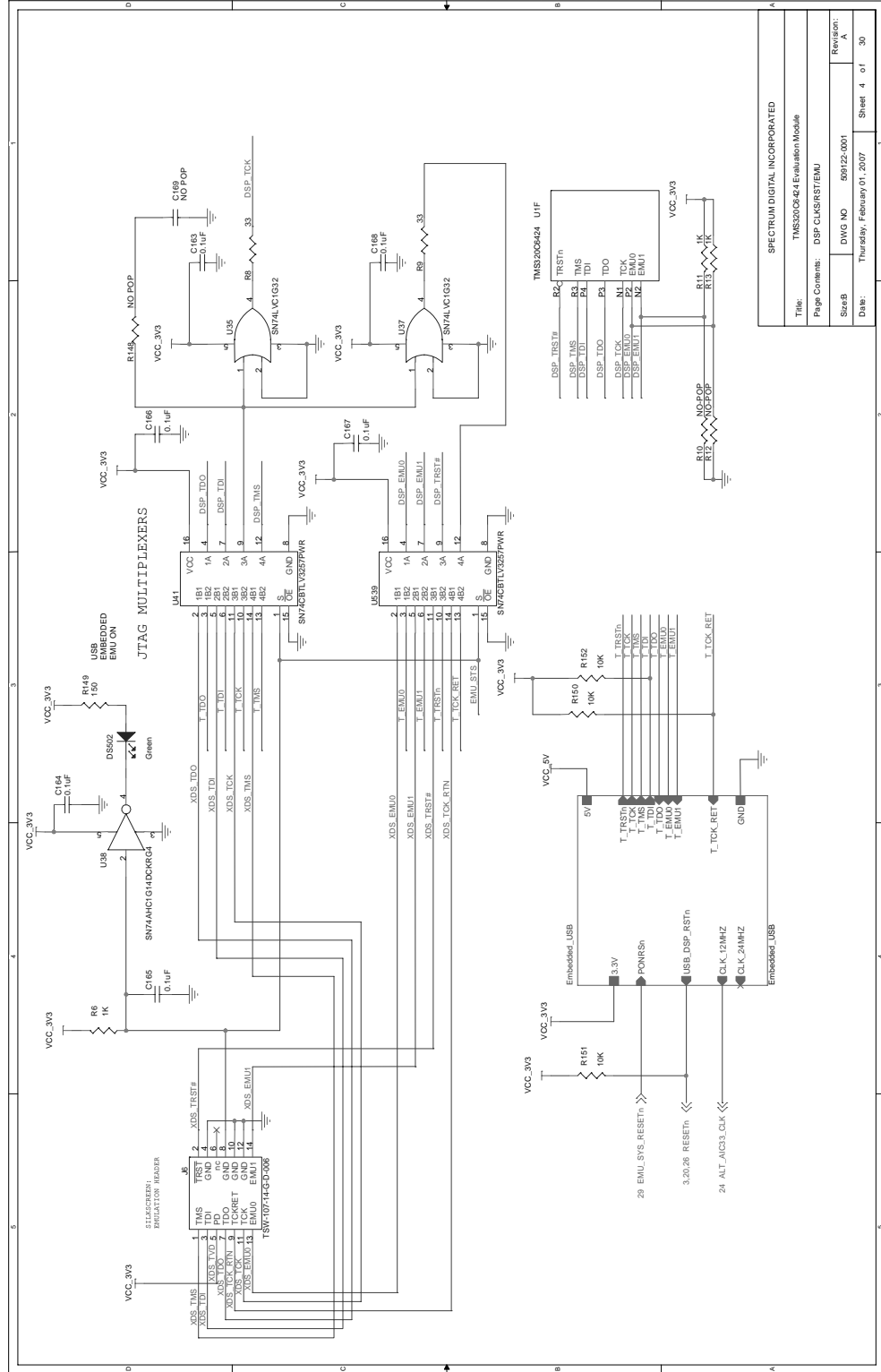


SPECTRUM DIGITAL INCORPORATED	
Title:	TMS320C642 Evaluation Module
Page Contents:	BLOCK DIAGRAM
Size/B	DWG NO 599122-0001
Date:	Thursday, February 01, 2007
Revision:	A
Sheet 2 of 30	

Spectrum Digital, Inc

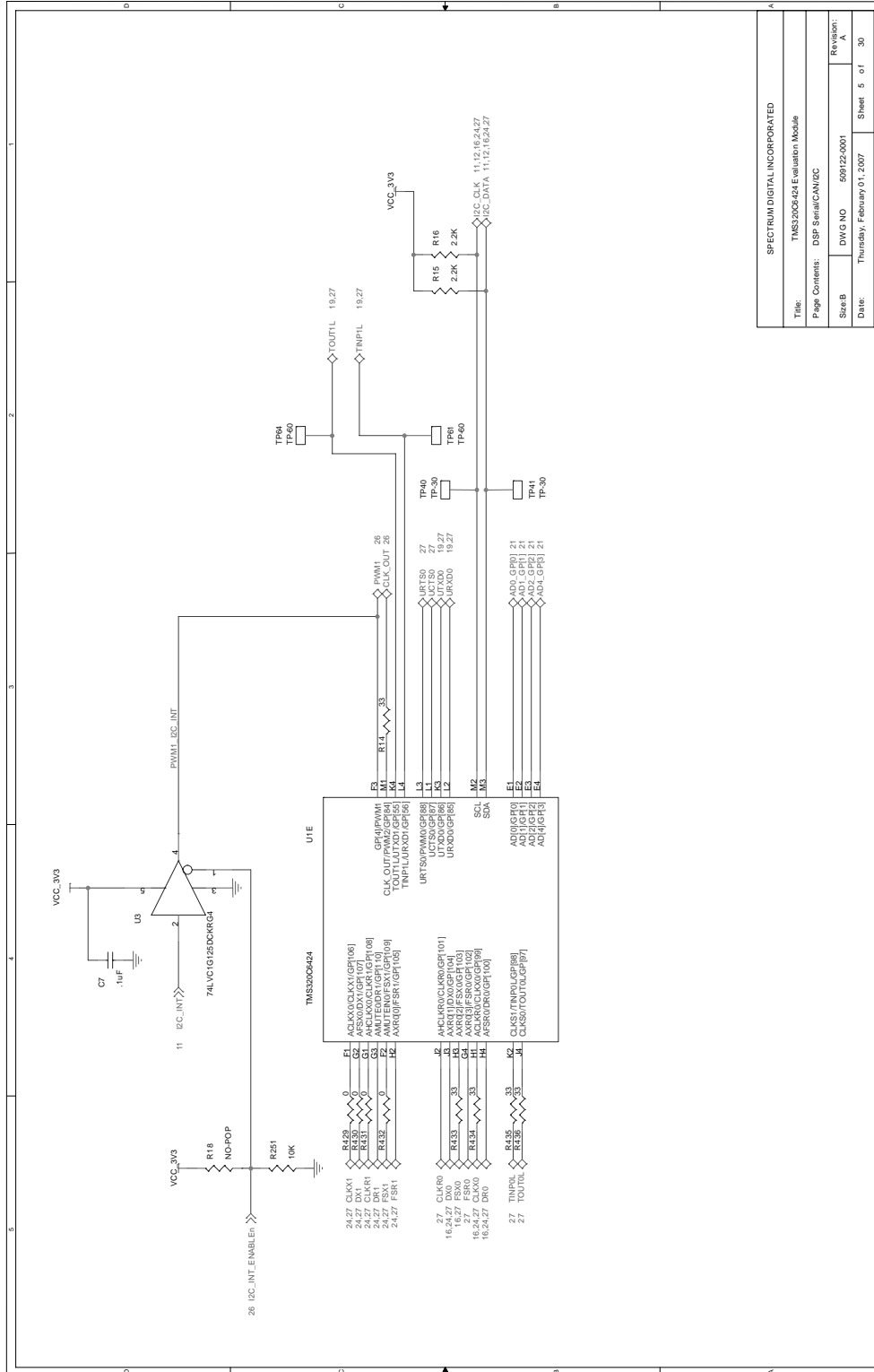


SPECTRUM DIGITAL INCORPORATED			
File:	TMS320C6424 Evaluation Module		
Page Contents:	DSP CLK/RS/ST/EMU		
SizeB:	DWG NO	599122-001	Revision:
Date:	Thursday, February 01, 2007	Sheet	3 of 30



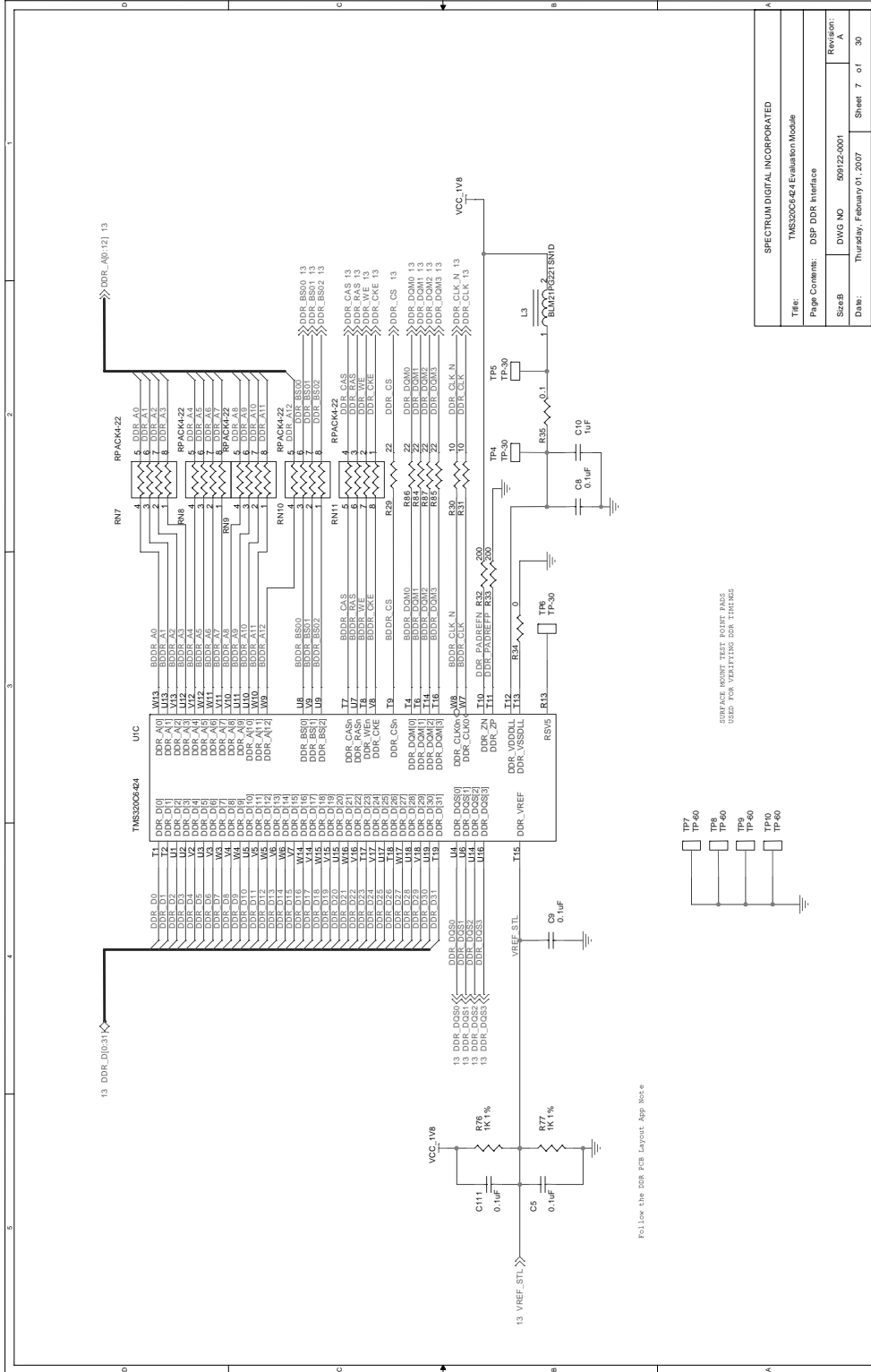
SPECTRUM DIGITAL INCORPORATED			
Title:	TMS320C6424 Evaluation Module		
Page Comments:	DSP CLK/RS/ST/EMU		
SizeB:	DWG NO	509122.0001	Revision: A
Date:	Thursday, February 01, 2007		
Sheet	4	of	30

Spectrum Digital, Inc

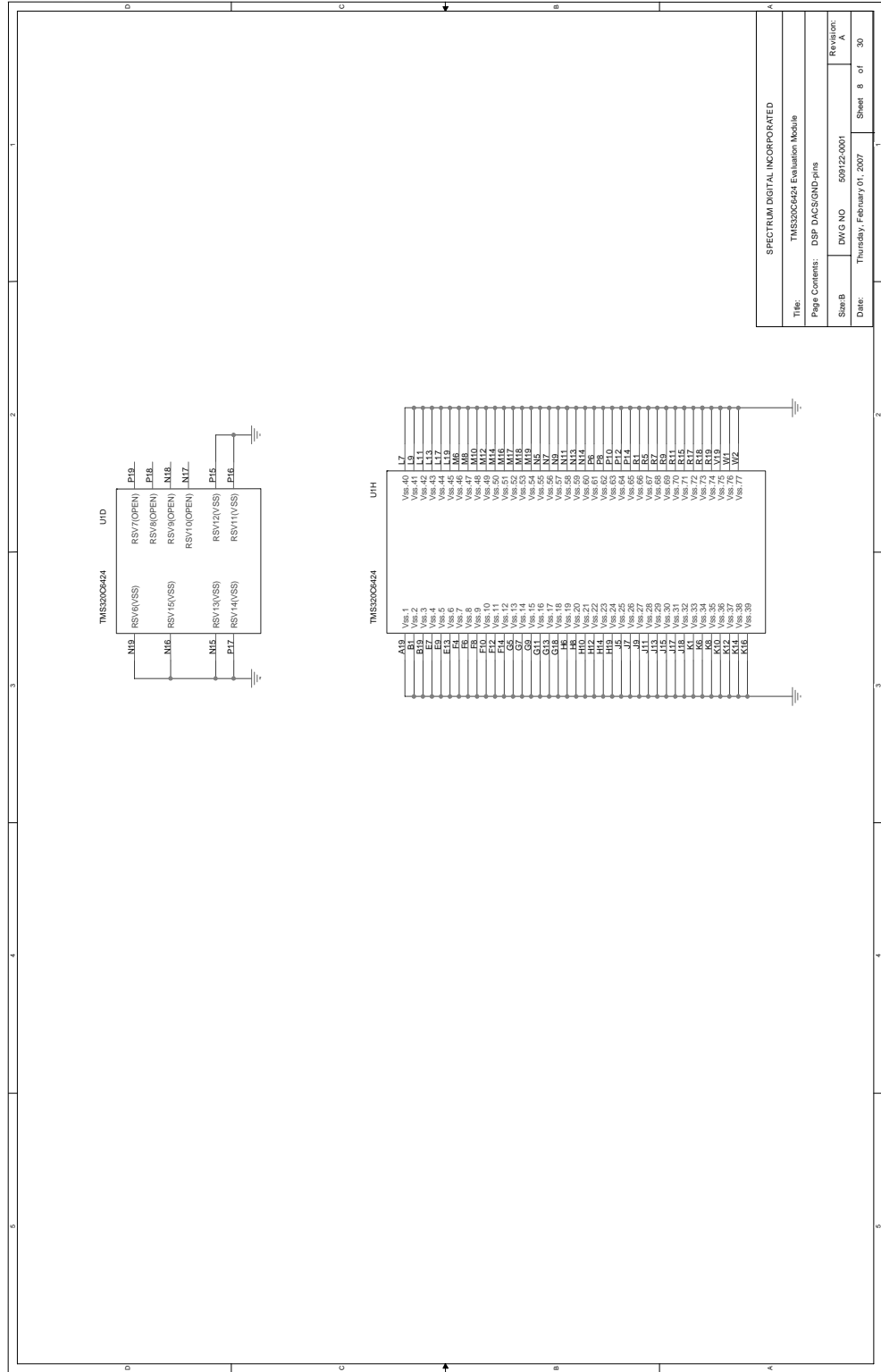


SPECTRUM DIGITAL INCORPORATED	
Title:	TMS320C6424 Evaluation Module
Page Contents:	DSP Serial/CAN/IZC
SizeB:	DWG NO 509122-0001
Date:	Thursday, February 01, 2007
Revision:	A
Sheet:	5 of 30

Spectrum Digital, Inc

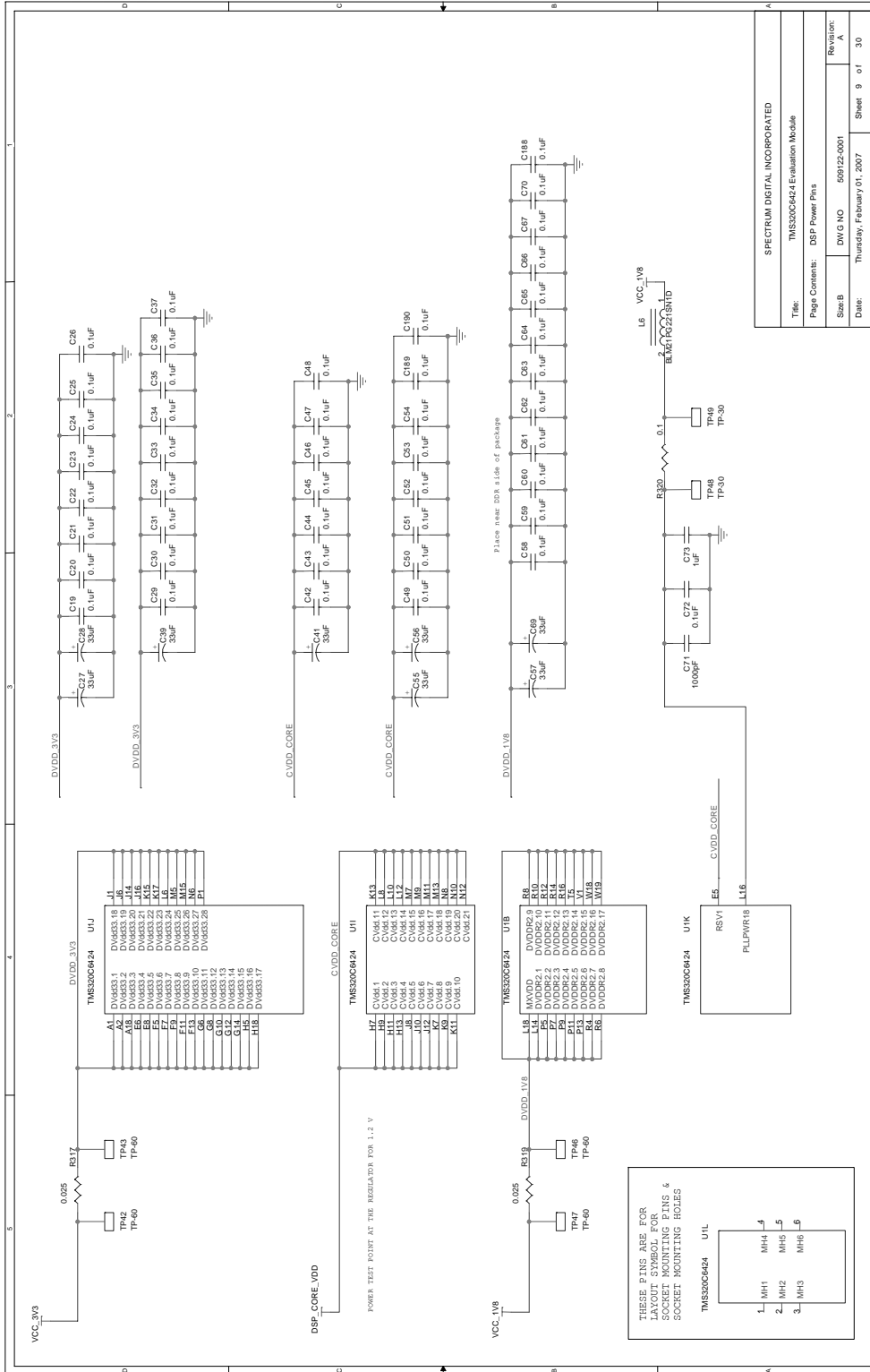


SPECTRUM DIGITAL INCORPORATED	
Title:	TMS320C6424 Evaluation Module
Page Contents:	DSP DDR Interface
Size:	DWG NO 599122-0001
Revision:	A
Date:	Thursday, February 01, 2007
Sheet	7 of 30

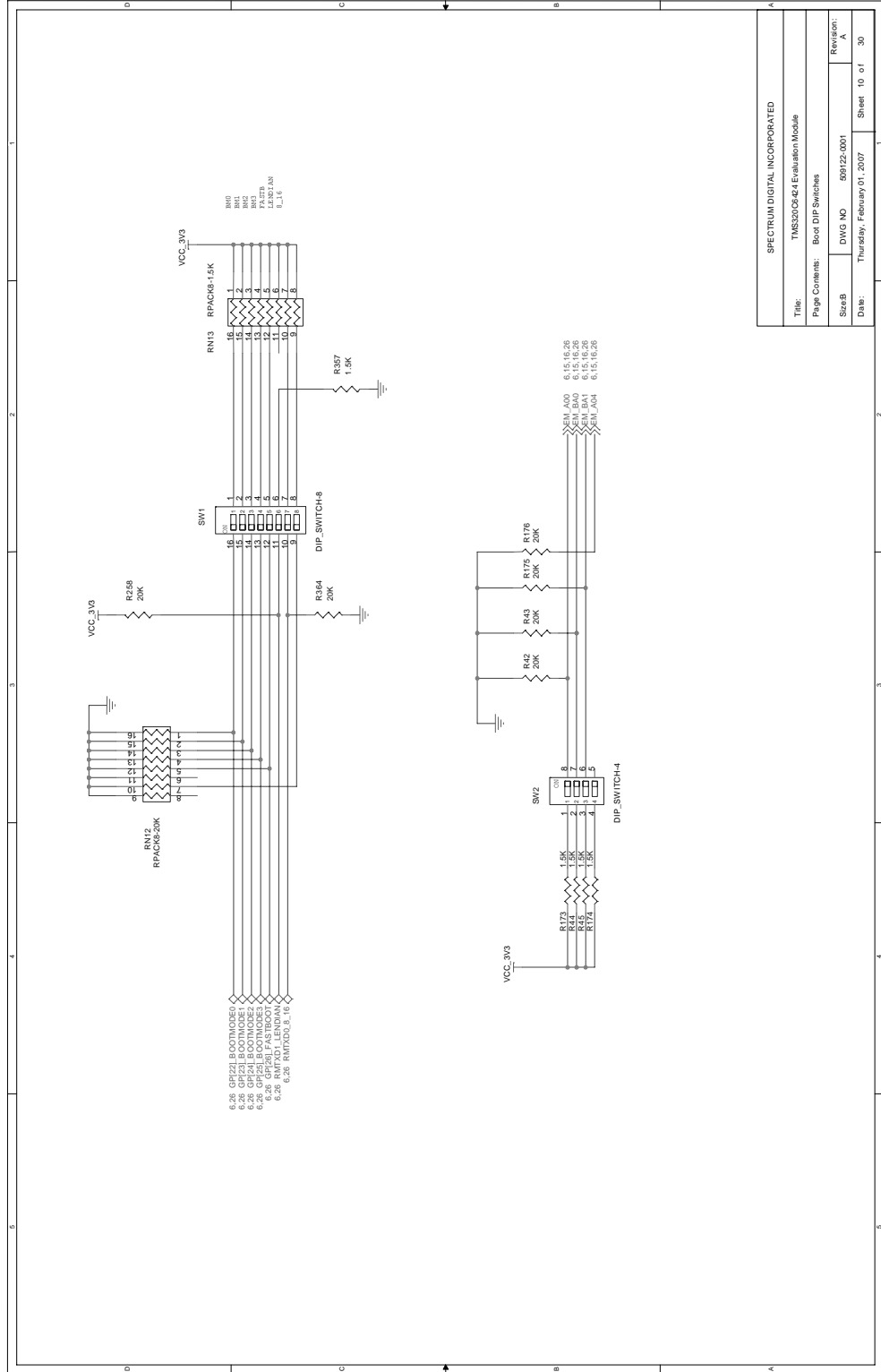


SPECTRUM DIGITAL INCORPORATED	
Title:	TMS320C6424 Evaluation Module
Page Contents: DSP DACSGND pins	
Sheet:	DWG NO 59912-0001
Date:	Thursday, February 01, 2007
Revision:	A
Sheet:	8 of 30

Spectrum Digital, Inc

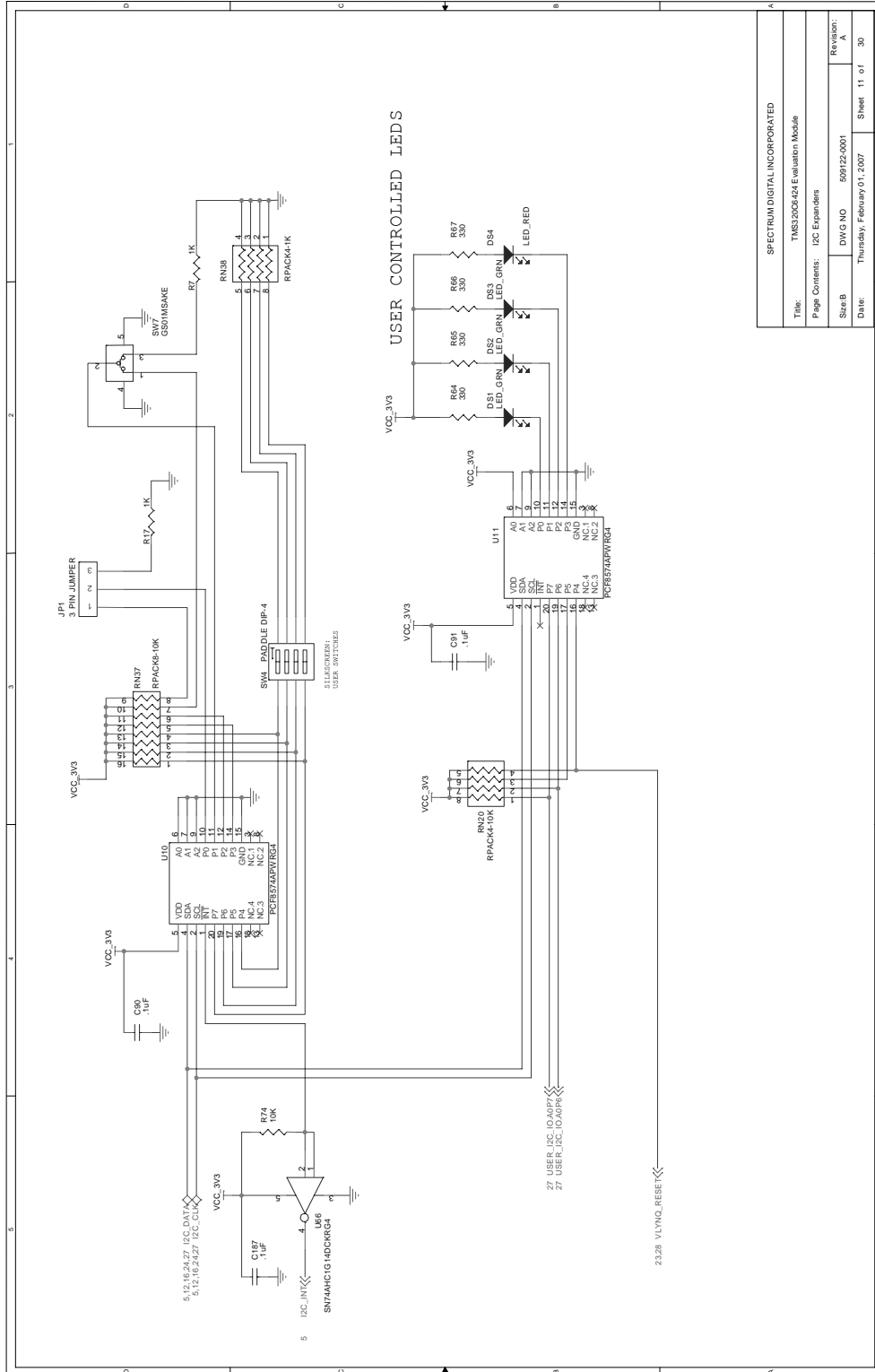


SPECTRUM DIGITAL INCORPORATED	
Title: TMS320C6424 Evaluation Module	
Page Contents: DSP Power Pins	
Size: B	DWG NO: 509122-0001
Date: Thursday, February 01, 2007	Revision: A
Sheet 9 of 30	

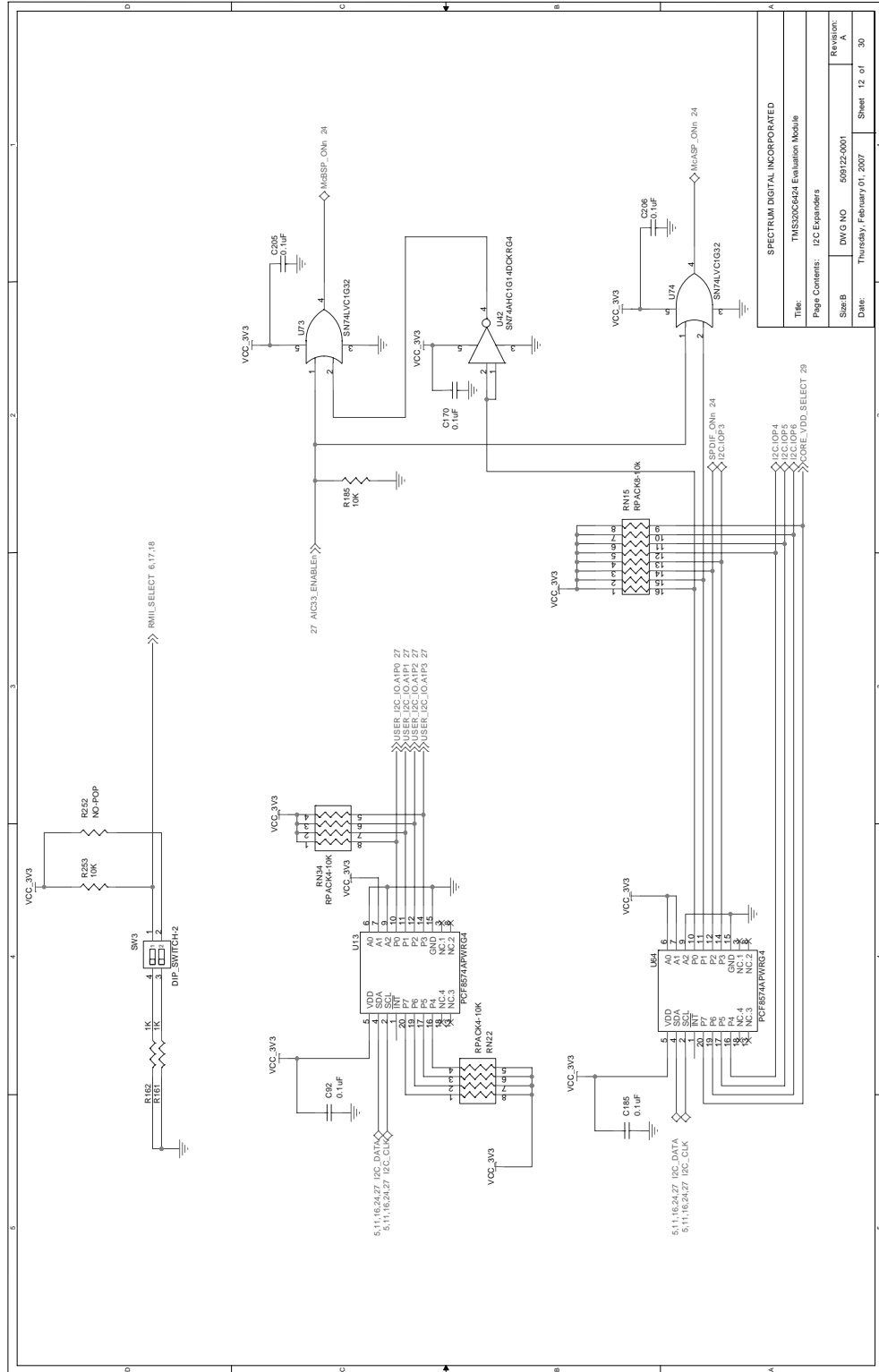


SPECTRUM DIGITAL INCORPORATED	
Title:	TMS320C6424 Evaluation Module
Page Contents:	Board DIP Switches
Size:B	DWG NO 509122.0001
Date:	Thursday, February 01, 2007
Revision:	A
Sheet	10 of 30

Spectrum Digital, Inc

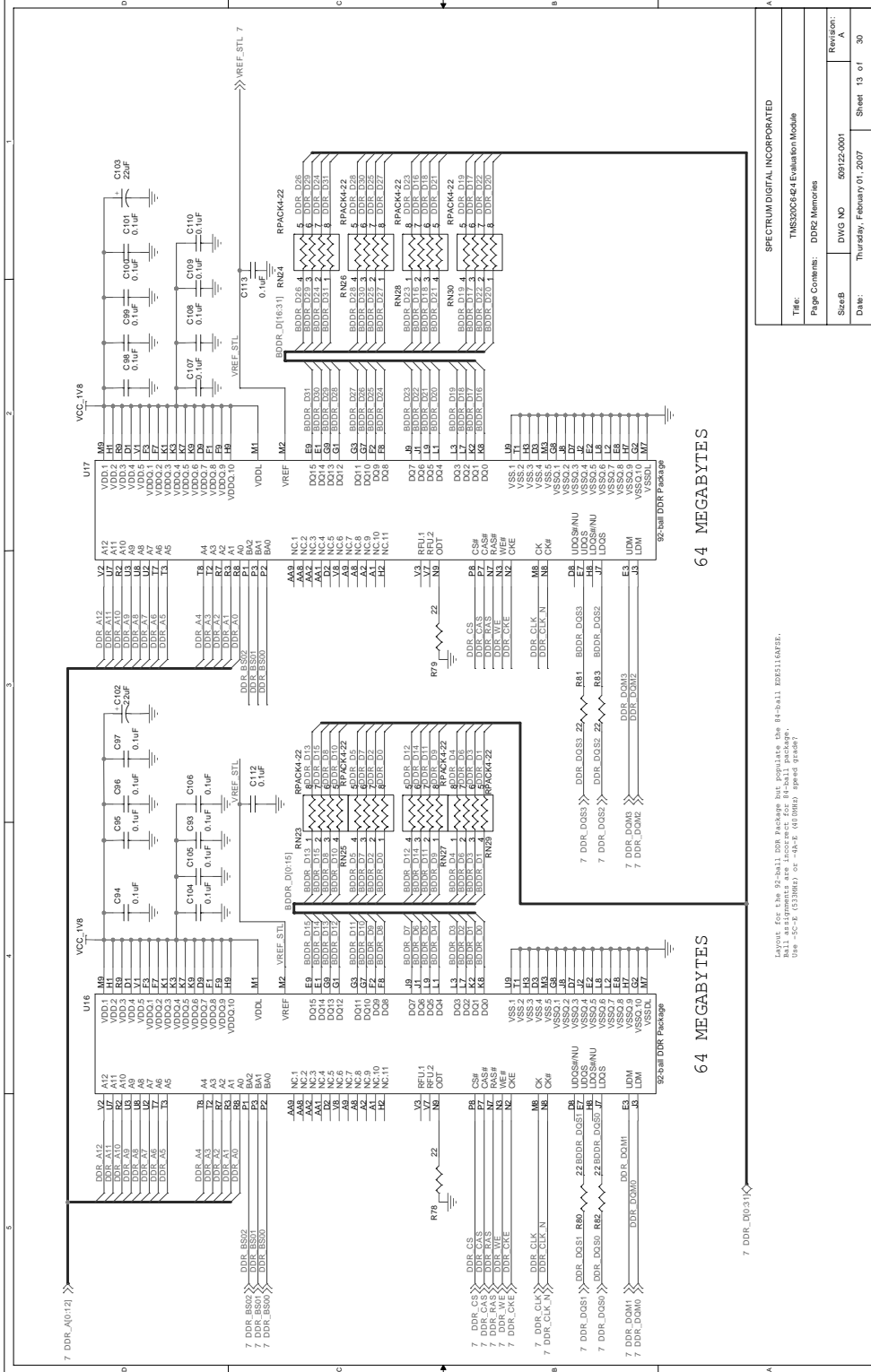


SPECTRUM DIGITAL INCORPORATED	
Title: TMS320C6424 Evaluation Module	
Page Contents: I2C Expander	
SizeB:	DWG NO: 599122-001
Date:	Thursday, February 01, 2007
Sheet:	11 of 30
Revision:	A



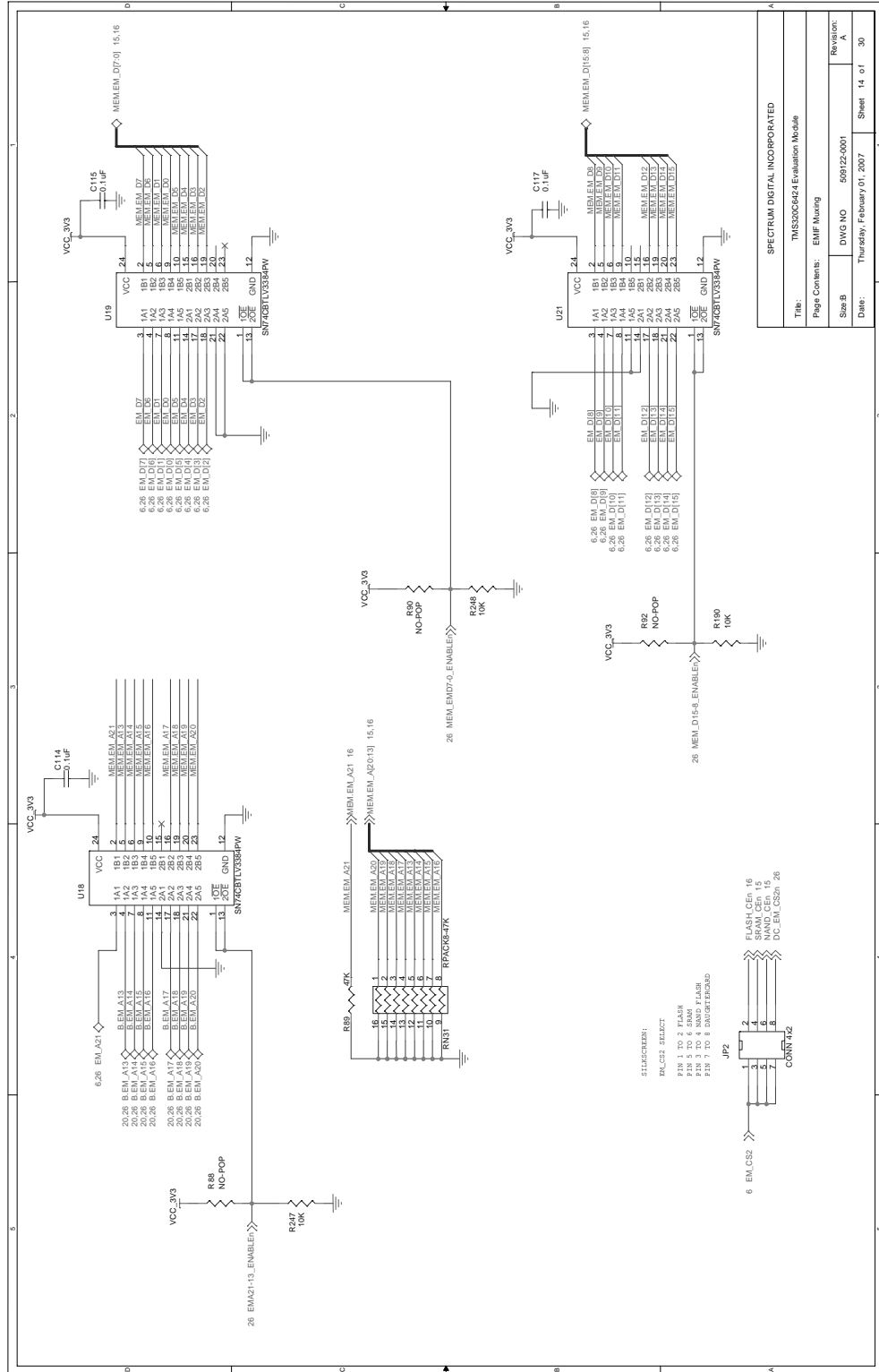
SPECTRUM DIGITAL INCORPORATED	
Title: TMS320C6424 Evaluation Module	
Page Contents: I2C Expander	
Size: B	DWG NO: 59122-0001
Date: Thursday, February 01, 2007	Sheet: 12 of 30
Revision: A	

Spectrum Digital, Inc



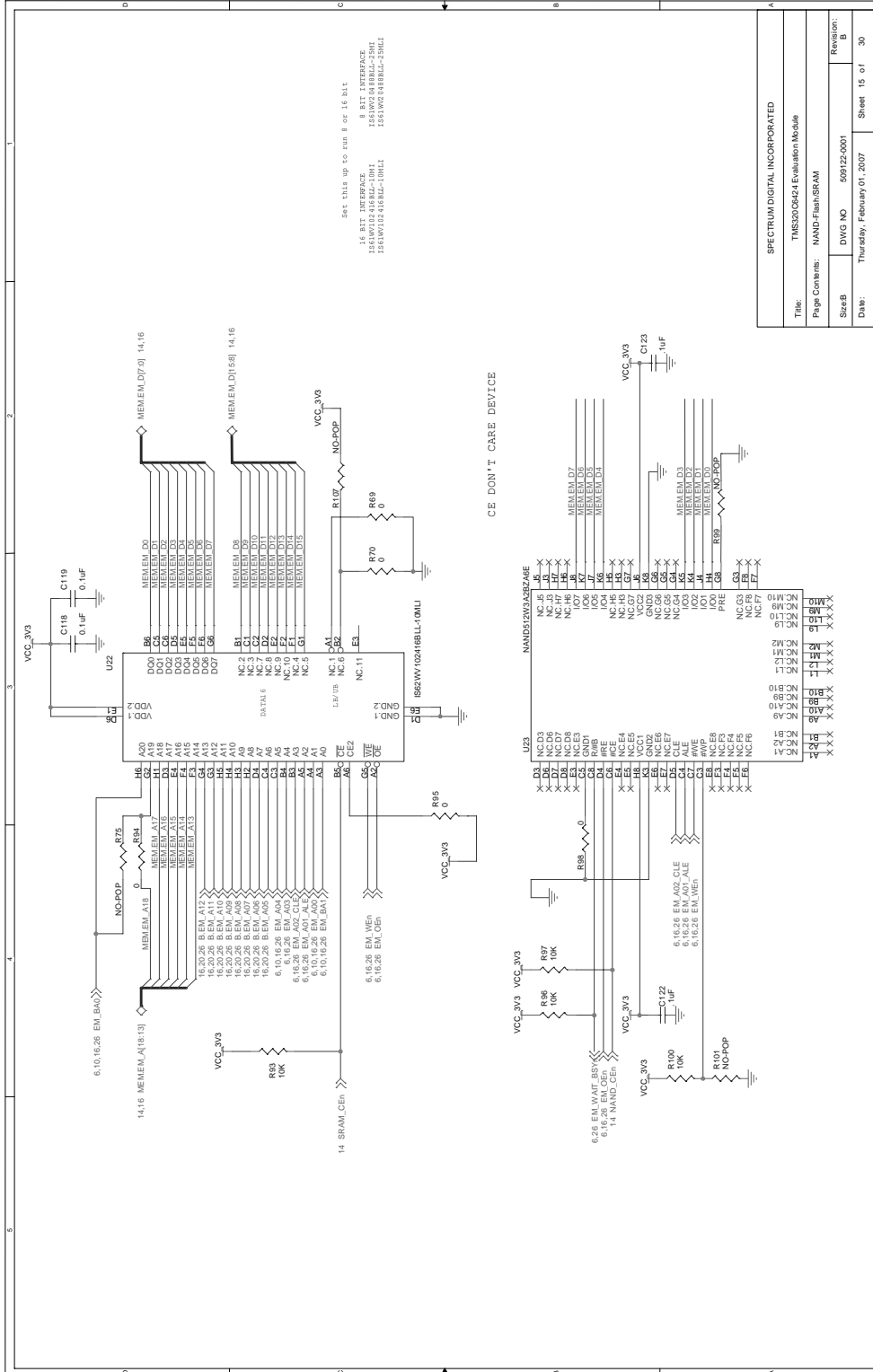
SPECTRUM DIGITAL INCORPORATED	
Title: TMS320C64 Evaluation Module	
Page Contents: DDR2 Memories	
SizeB	DWG NO 59122-0001
Date:	Thursday, February 01, 2007
Revision:	A
Sheet 13 of	30

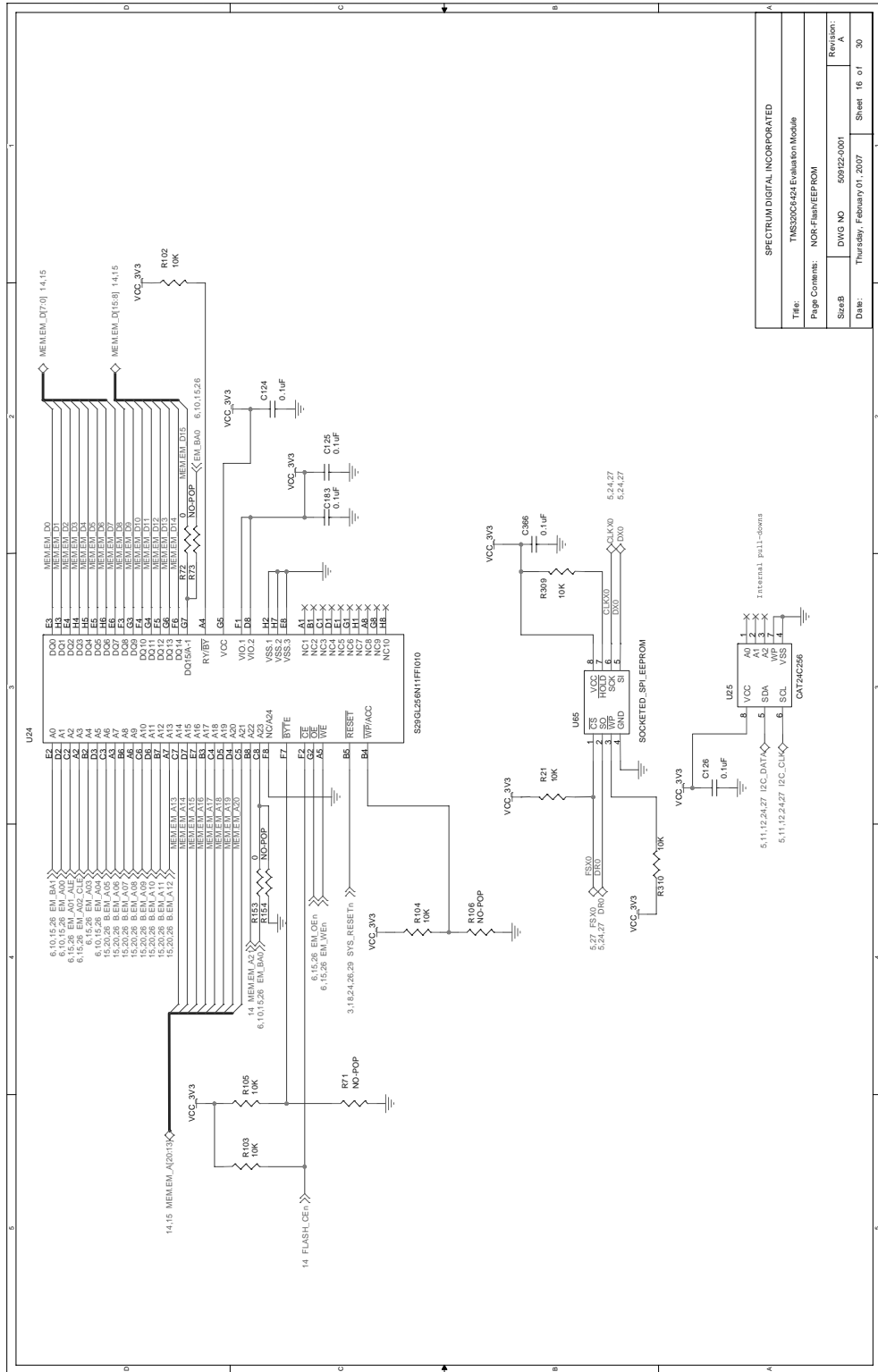
Layout for the 92-ball DDR Package but populate the 84-ball ESD0116R2E.
 Ball assignments are incorrect for 84-ball package.
 Use -C64-0231001-01-408 (408mm) sized stencil.



SPECTRUM DIGITAL INCORPORATED	
Title: TMS420C6424 Evaluation Module	
Page Contents: EMF Muxing	
Size: B	DWG NO: 509122-0001
Revision: A	Date: Thursday, February 01, 2007
Sheet: 14 of 30	

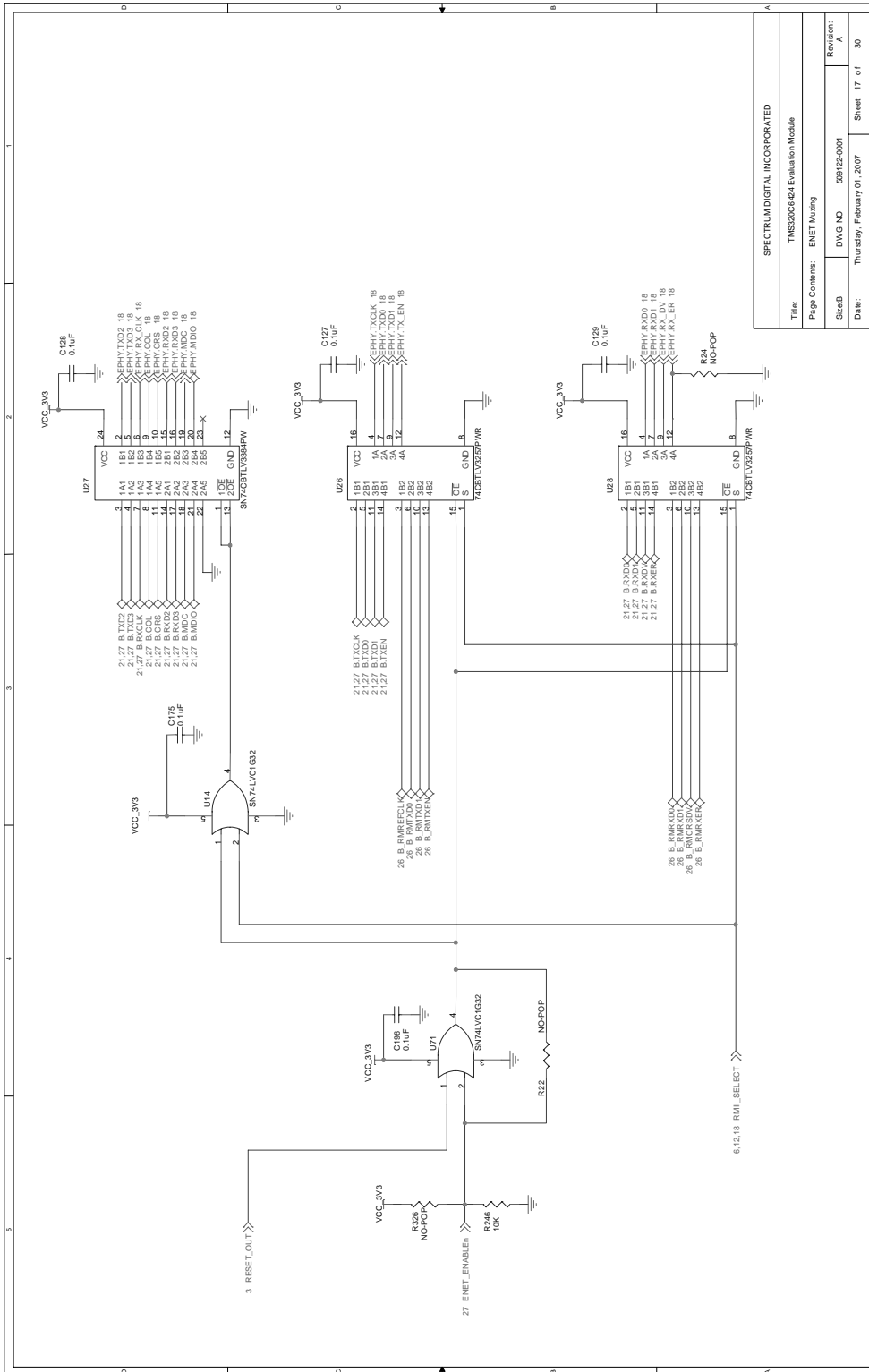
Spectrum Digital, Inc



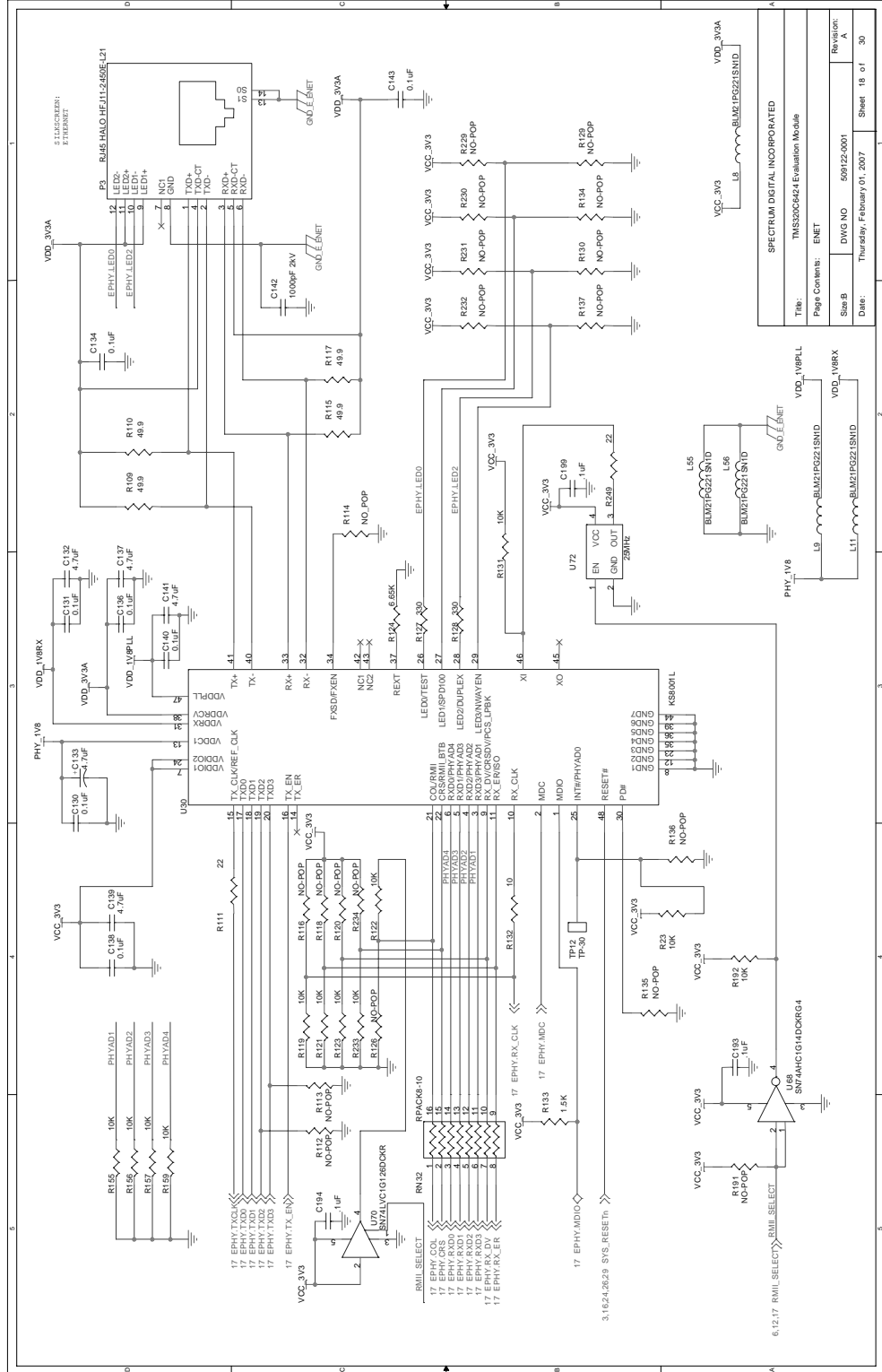


SPECTRUM DIGITAL INCORPORATED	
Title: TMS420C6424 Evaluation Module	
Page Comments: NOR-Flash/EEPROM	
Size: B	DWG NO: 509122-001
Date: Thursday, February 01, 2007	Revision: A
Sheet: 16 of 30	

Spectrum Digital, Inc

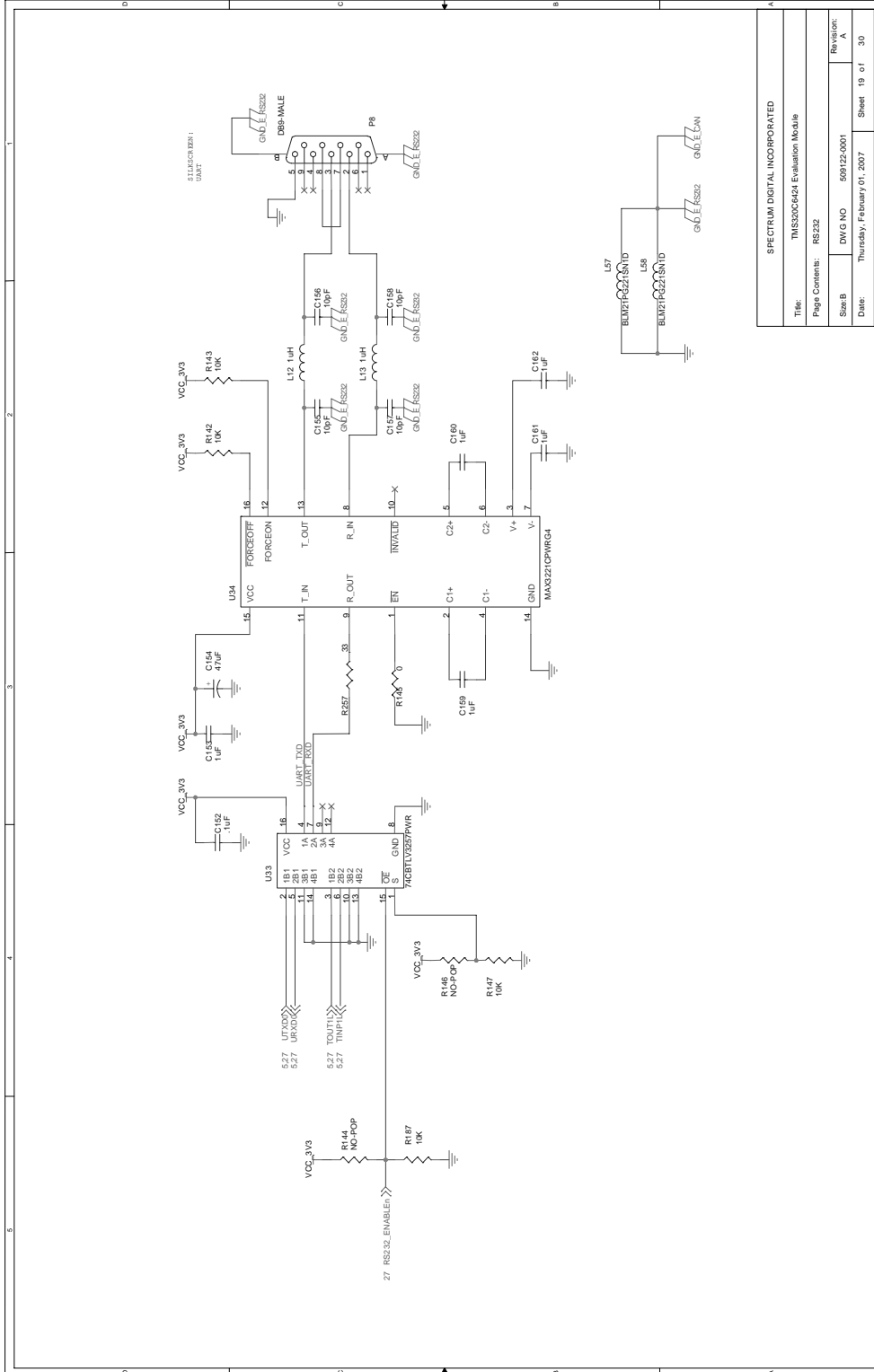


SPECTRUM DIGITAL INCORPORATED			
Title:	TMS420C6424 Evaluation Module		
Page Contents:	ENET Muxing		
Size B	DWG NO	598122-0001	Revision: A
Date:	Thursday, February 01, 2007		
	Sheet	17	of 30

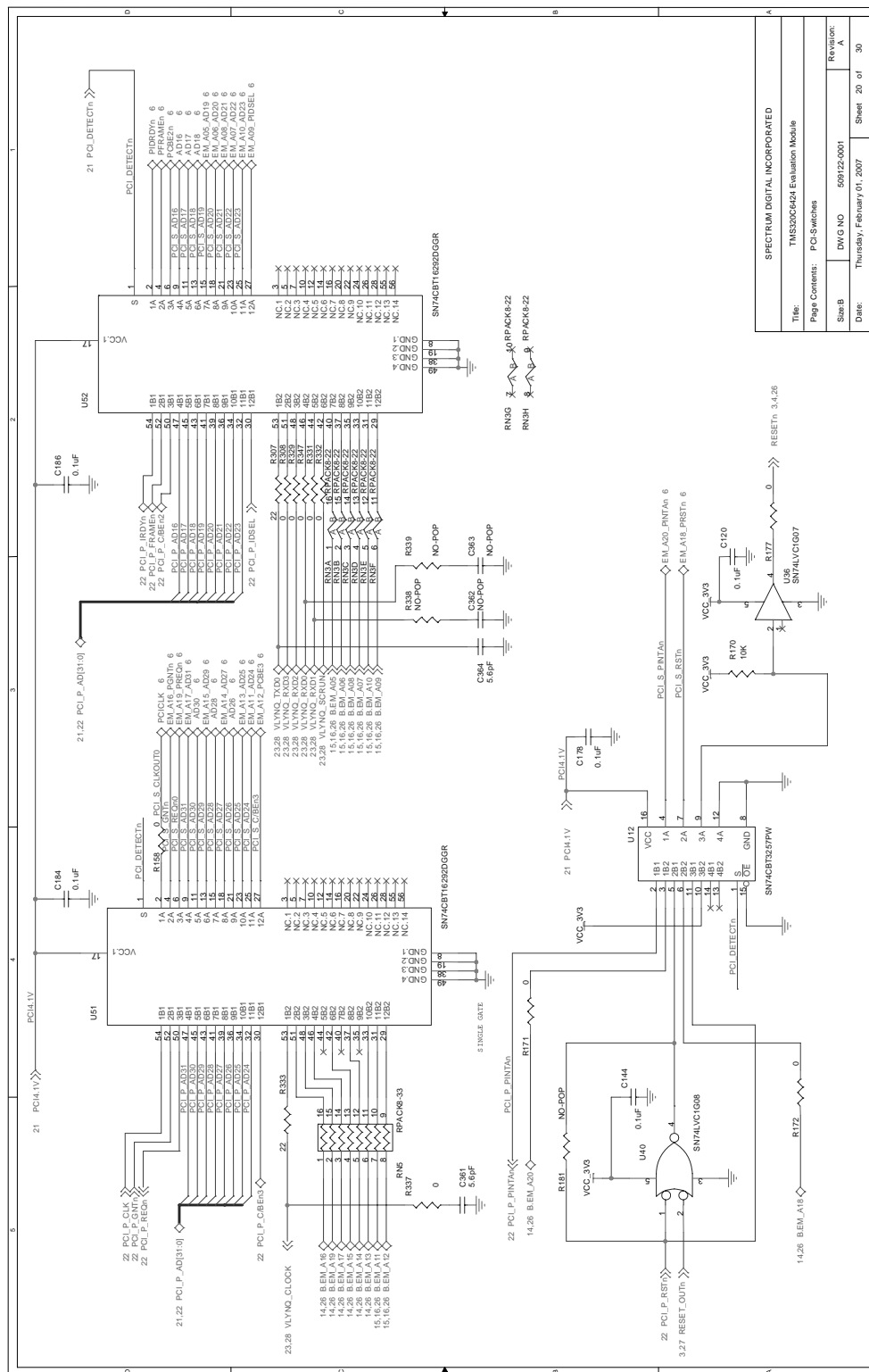


File:	TMS320C6424 Evaluation Module
Page Contents:	ENET
Size:	DWG NO 509122-0001
Date:	Thursday, February 01, 2007
Revision:	A
Sheet:	18 of 30

Spectrum Digital, Inc

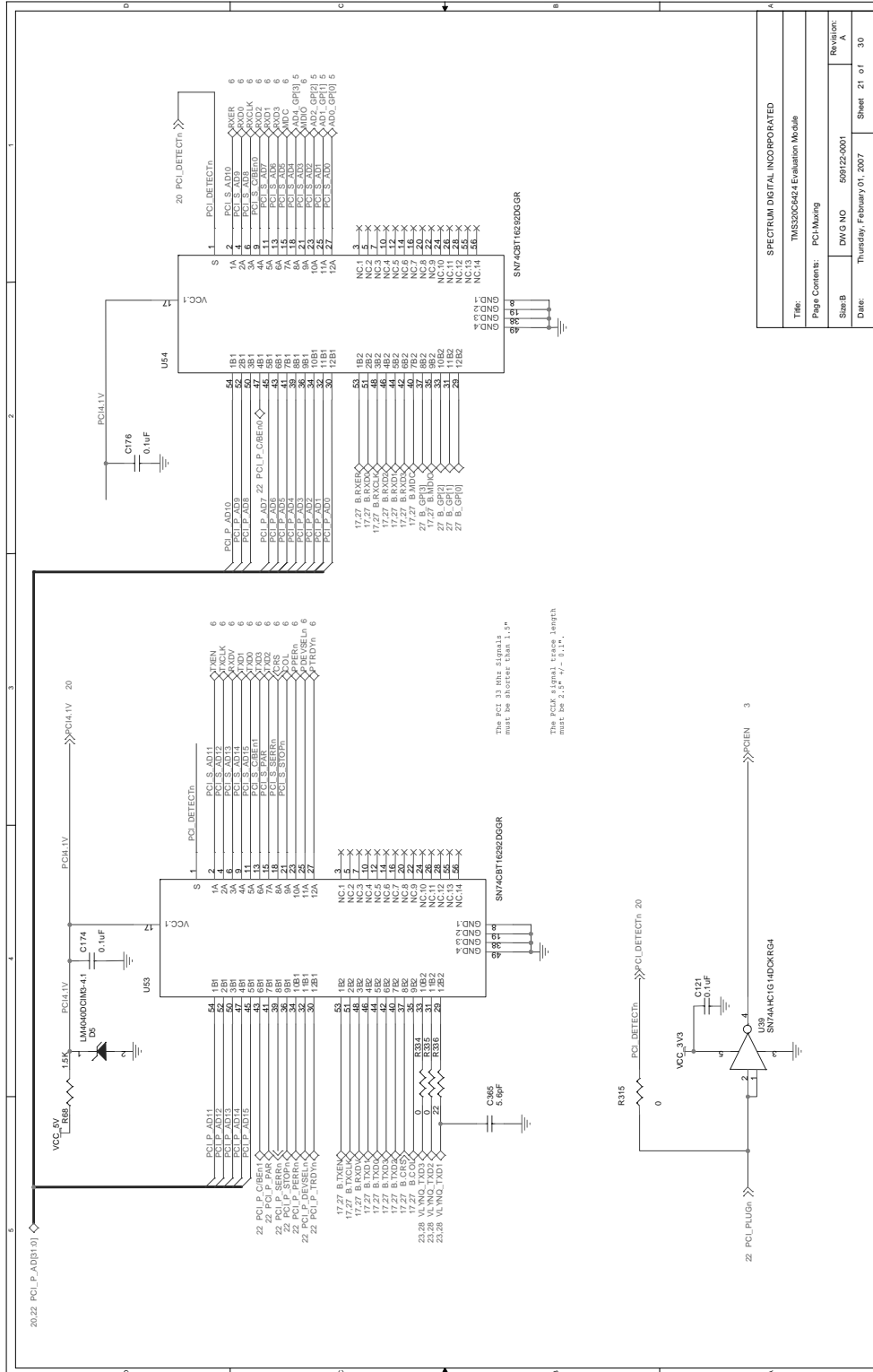


SPECTRUM DIGITAL INCORPORATED			
Title:	TMS320C6424 Evaluation Module		
Page Contents:	RS232		
Size/B	DWG NO	509122-0001	Revision: A
Date:	Thursday, February 01, 2007		
		Sheet	19 of 30



SPECTRUM DIGITAL INCORPORATED	
Title: TMS420C6424 Evaluation Module	
Page Contents: PCI-Switches	
SheeB	DWG NO 589122-0001
Date:	Thursday, February 01, 2007
Revision: A	
Sheet	20 of 30

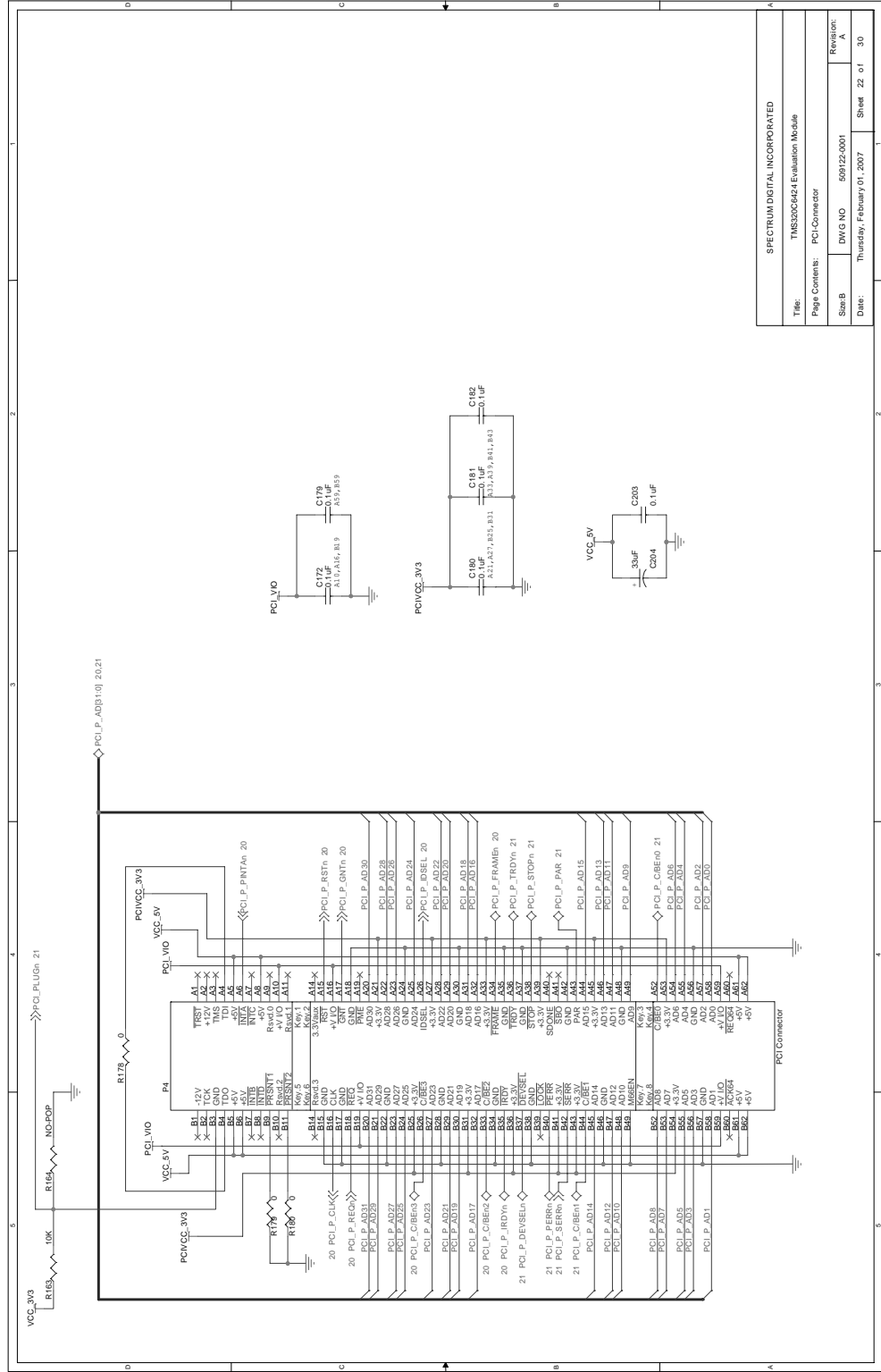
Spectrum Digital, Inc



A-22

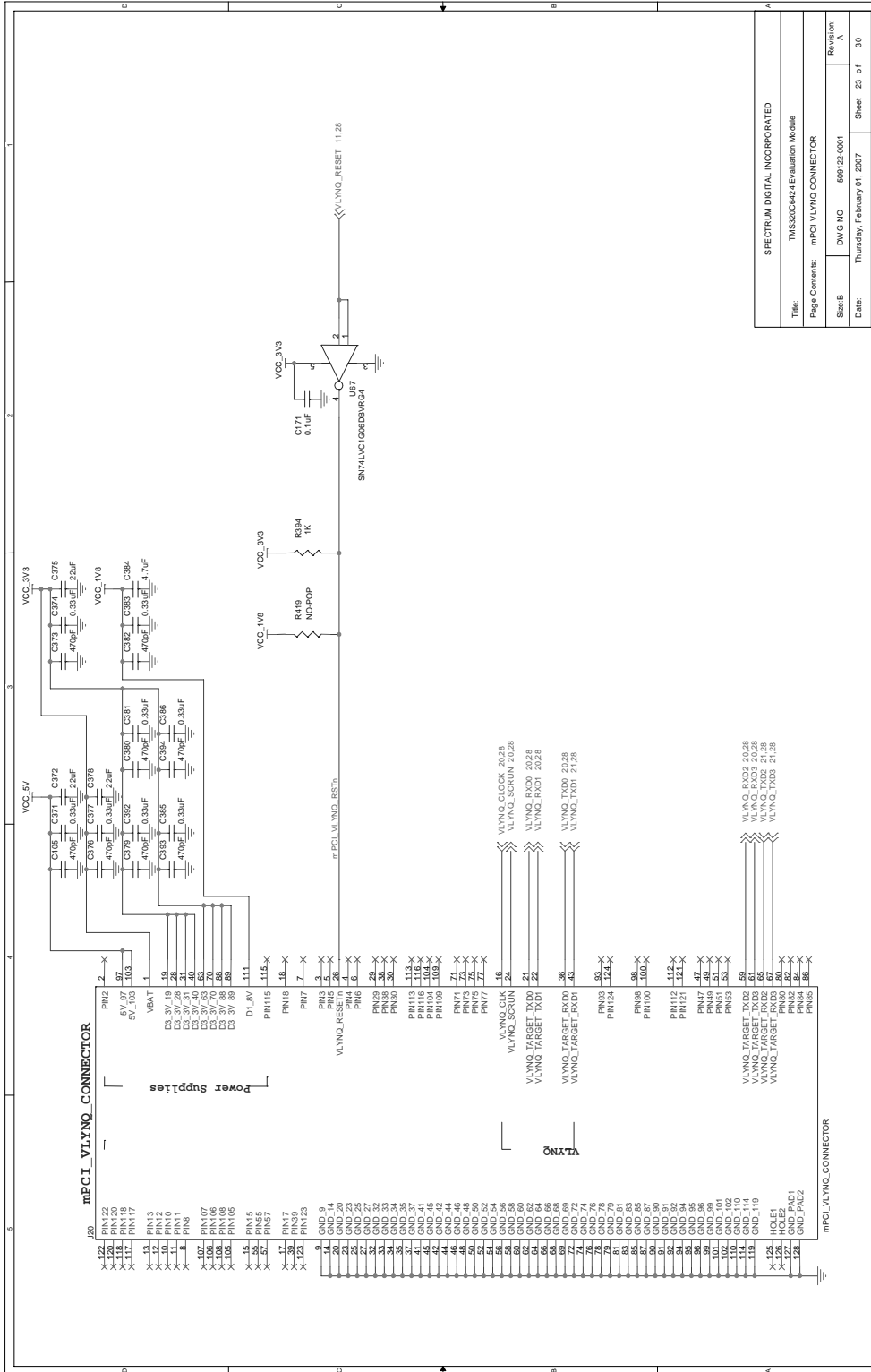
C6424 EVM Technical Reference

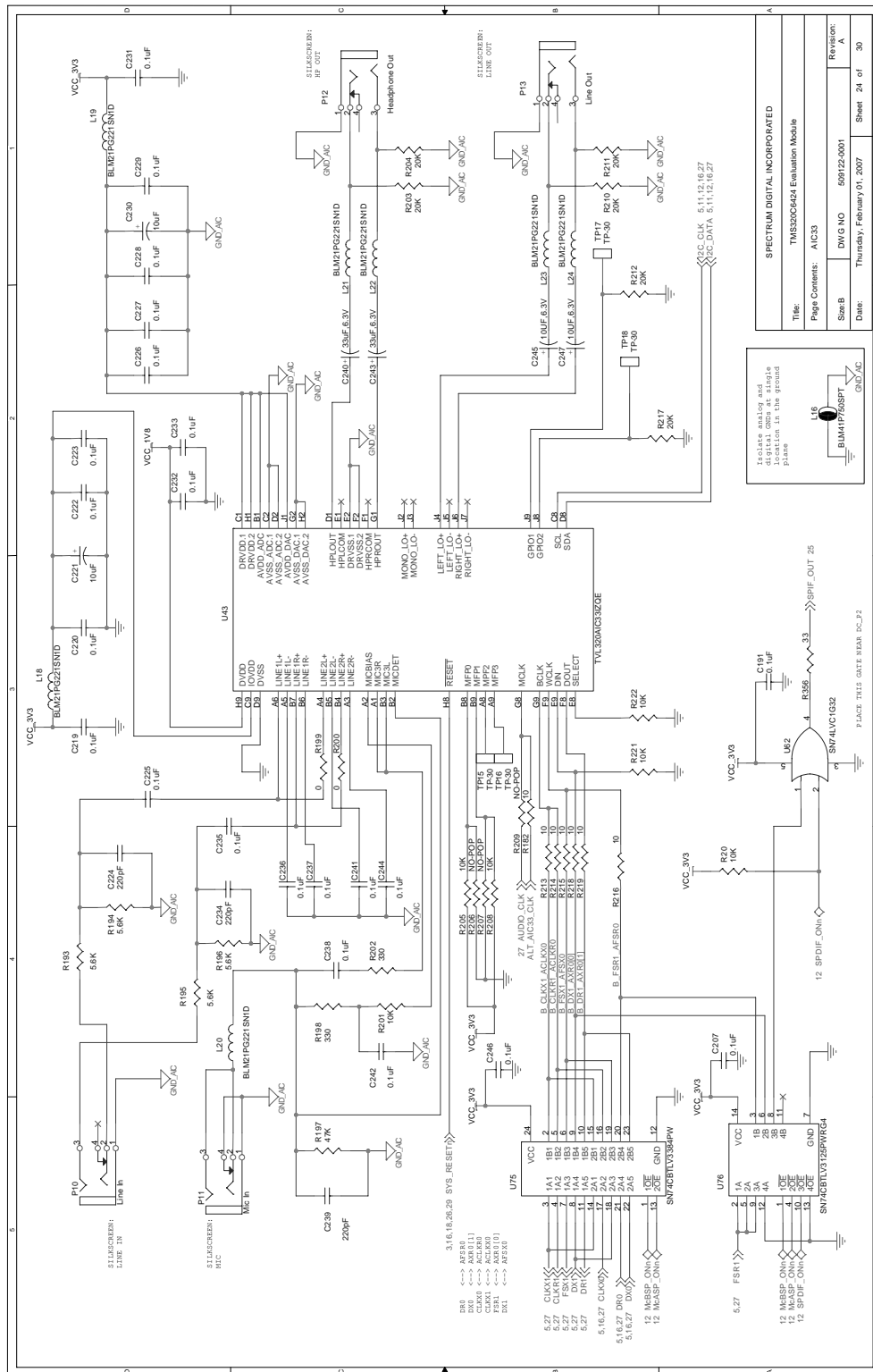
File:	TMS320C6424 Evaluation Module		
Page Contents:	PCI-Muxing		
Size/B	DWG NO	509122-0001	Revision:
Date:	Thursday, February 01, 2007		A
Sheet:	21 of 30		



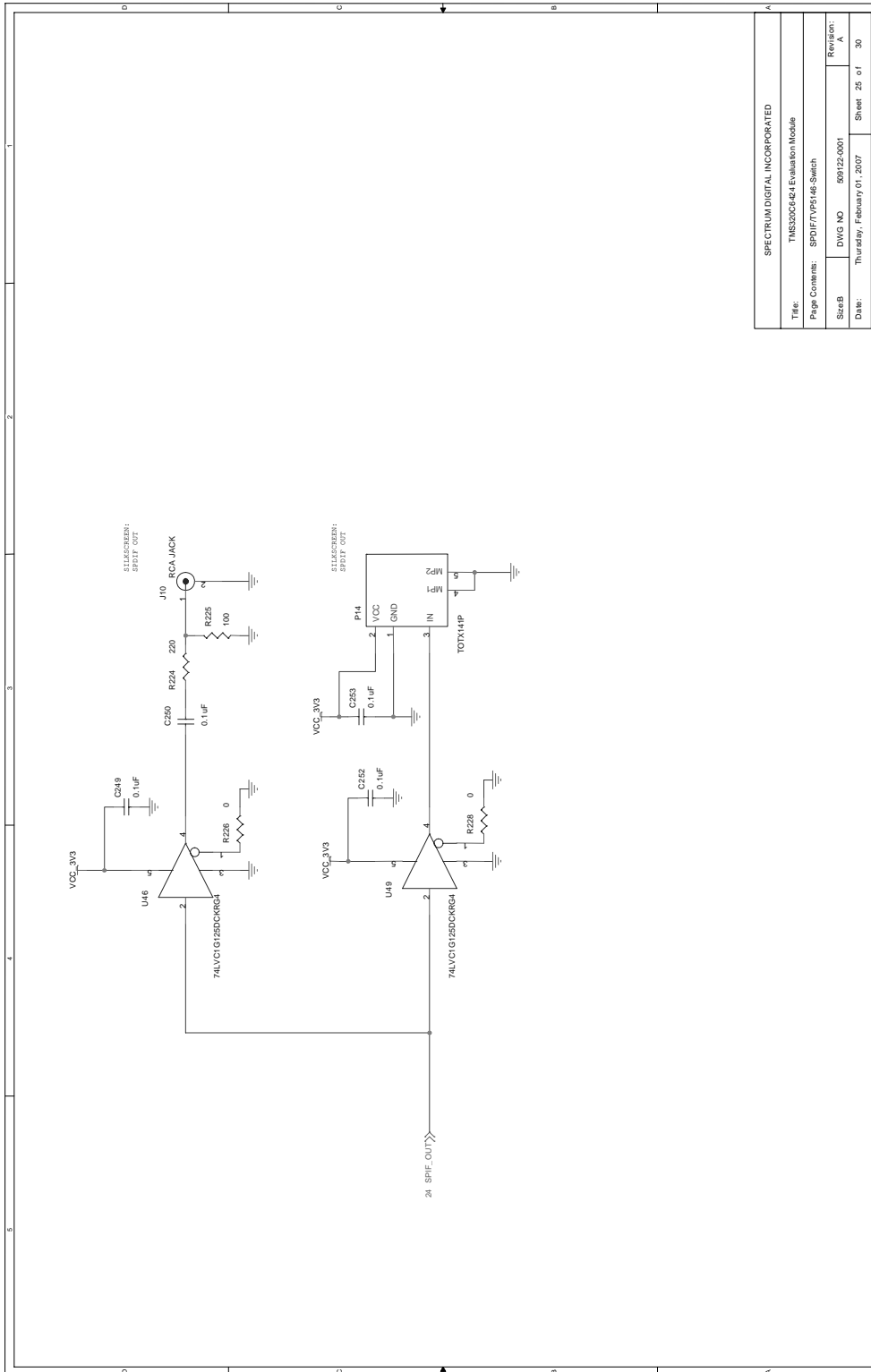
SPECTRUM DIGITAL INCORPORATED			
Title:	TMS50206424 Evaluation Module		
Page Contents:	PCI-Connector		
Size/B	DWG NO	59122-0001	Revision: A
Date:	Thursday, February 01, 2007		Sheet 22 of 30

Spectrum Digital, Inc

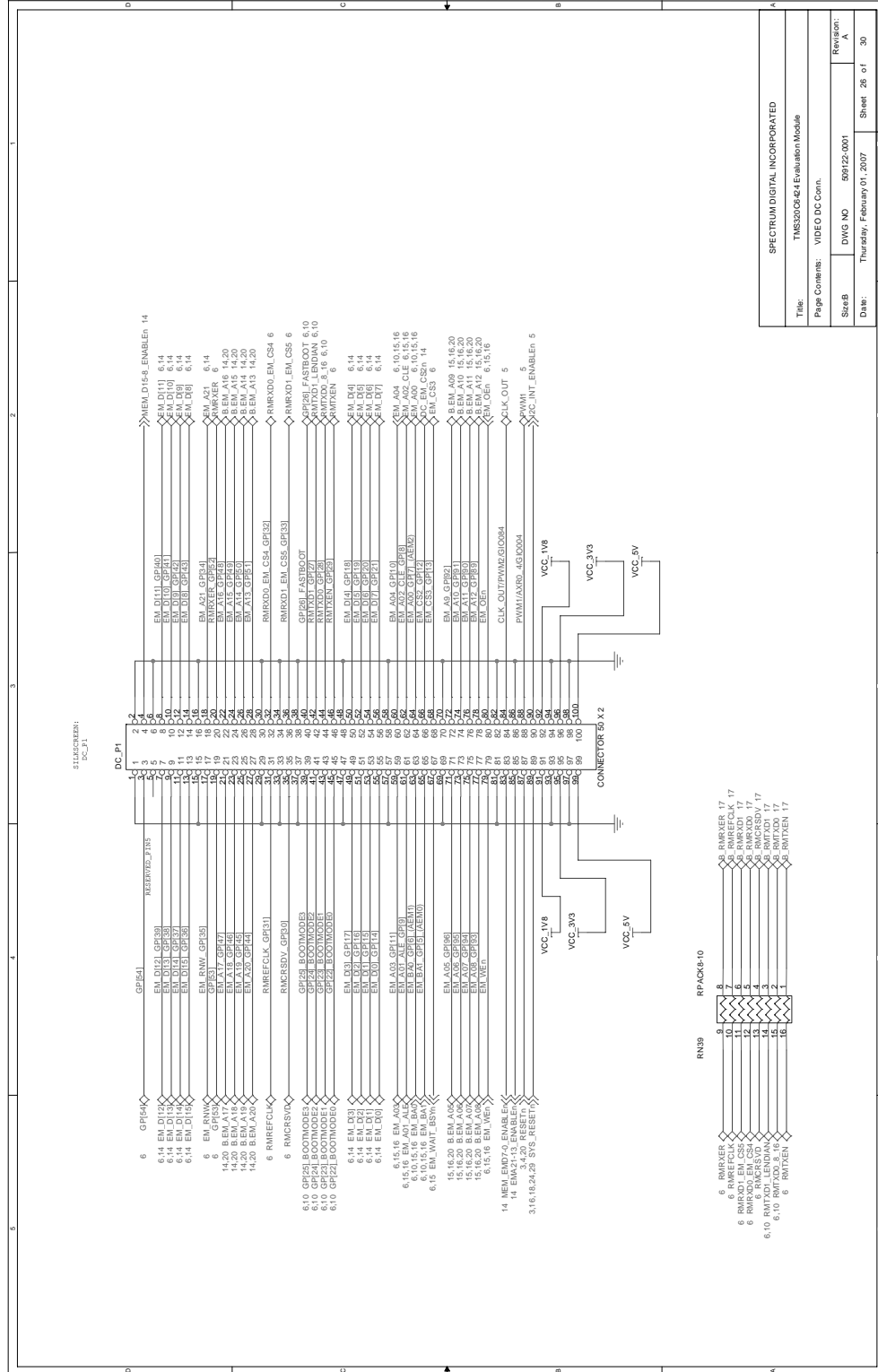




Spectrum Digital, Inc

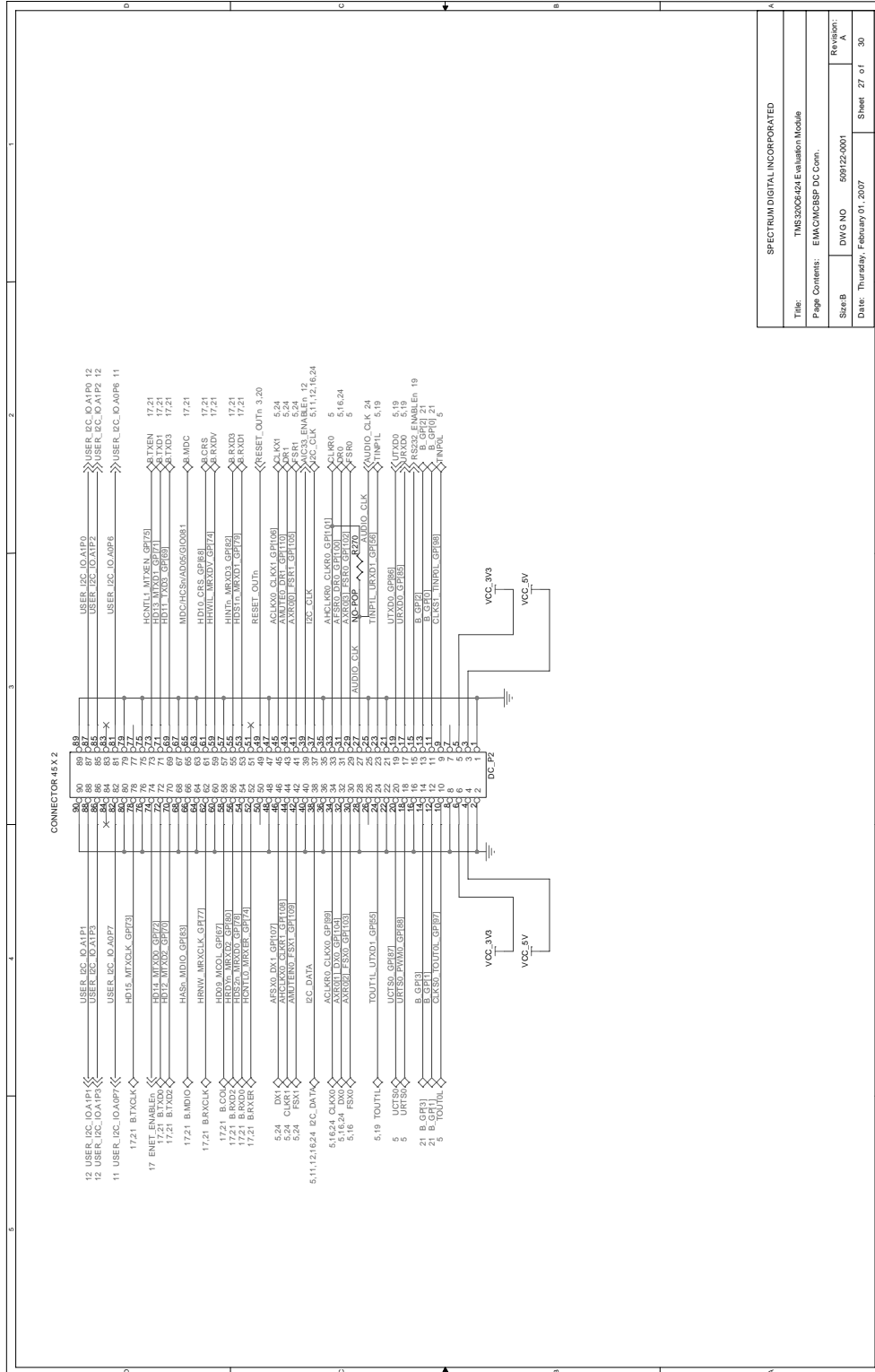


SPECTRUM DIGITAL INCORPORATED	
Title: TMS320C641 Evaluation Module	
Page Contents: SPDIF/VFS146 Switch	
Size: B	Revision: A
DWG NO: 509122-0001	Sheet 25 of 30
Date: Thursday, February 01, 2007	

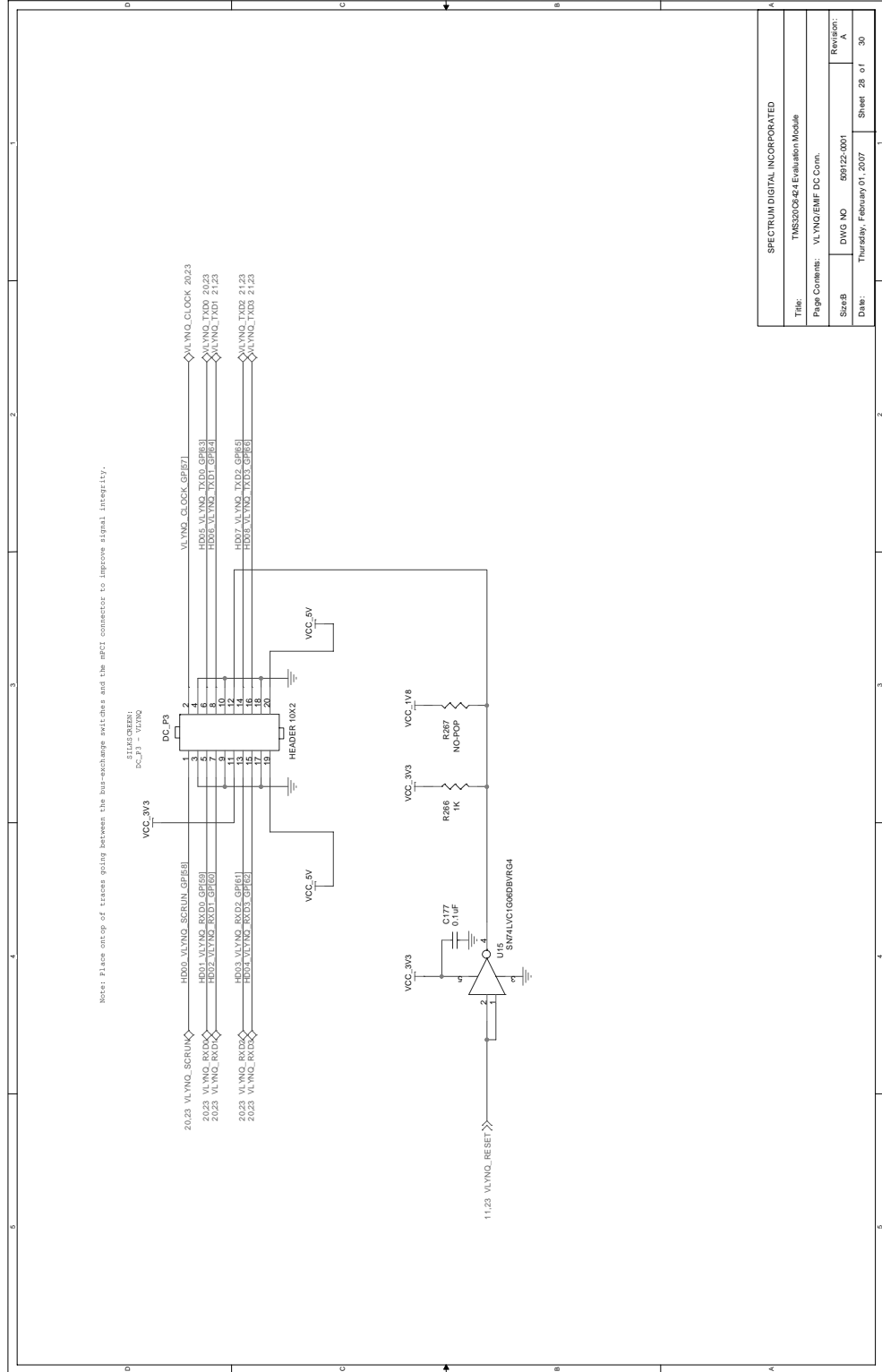


Title: SPECTRUM DIGITAL INCORPORATED	
Page Contents: TMS320C6424 Evaluation Module	
Page: VIDEO DC Conn.	Revision: A
Size: B	DWG NO: 509122-001
Date: Thursday, February 01, 2007	Sheet: 26 of 30

Spectrum Digital, Inc

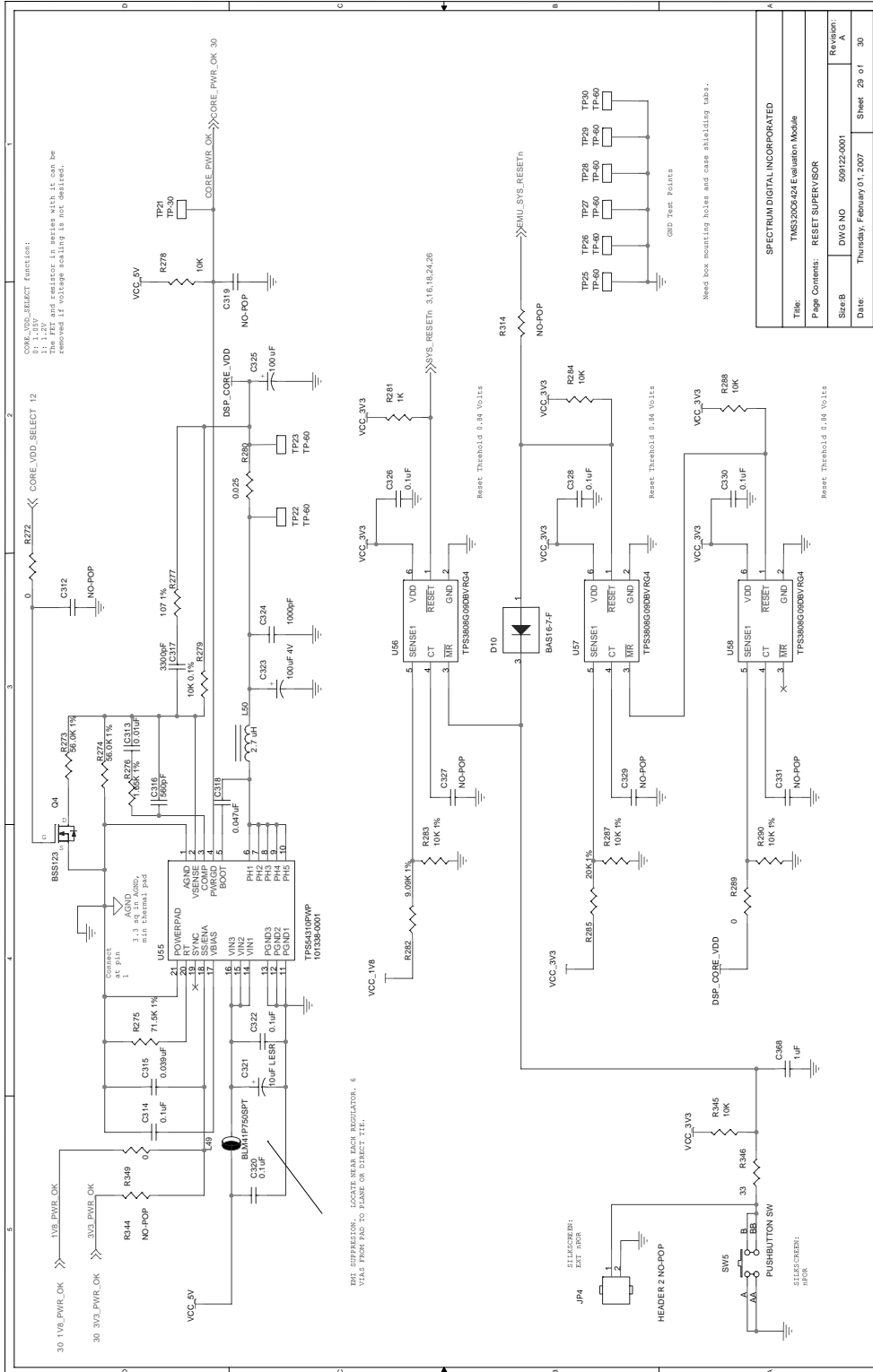


SPECTRUM DIGITAL INCORPORATED	
Title:	TMS500C6424 Evaluation Module
Page Contents:	EMACMCBSP DC Conn.
SizeB:	DWG NO 599122-001
Date:	Thursday, February 01, 2007
Revision:	A
Sheet:	27 of 30

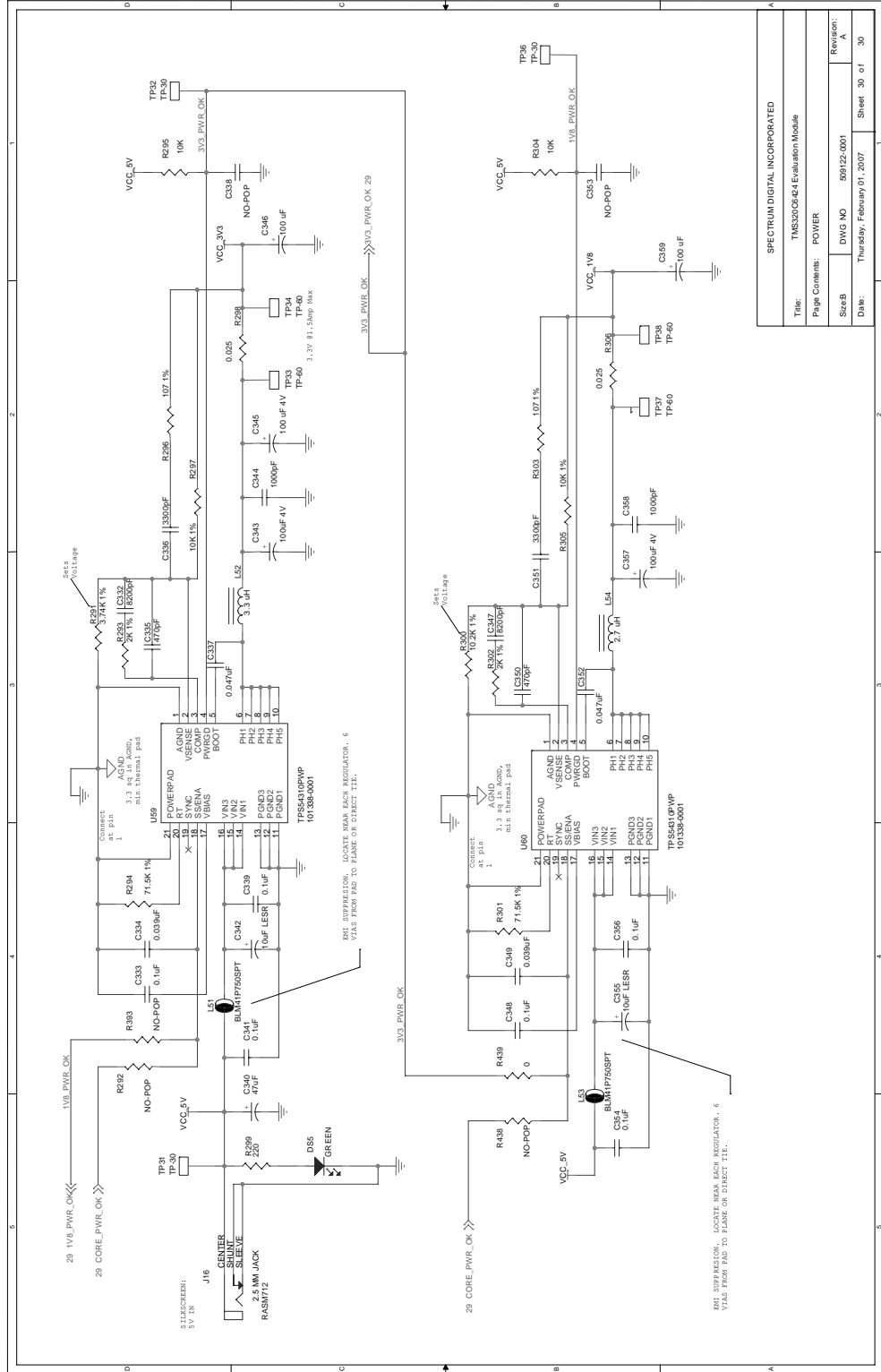


SPECTRUM DIGITAL INCORPORATED	
Title:	TMS420C64 Evaluation Module
Page Contents:	VLING/EMF DC Conn.
Size/B	DWG NO 599122-0001
Revision:	A
Date:	Thursday, February 01, 2007
Sheet	28 of 30

Spectrum Digital, Inc



SPECTRUM DIGITAL INCORPORATED	
Title:	TMS320C6424 Evaluation Module
Page Contents:	RESET SUBFUNCTION
Size: B	DWG NO: 509122-001
Date:	Thursday, February 01, 2007
Sheet:	29 of 30
Revision:	A



SPECTRUM DIGITAL INCORPORATED			
Title: TMS320C6424 Evaluation Module			
Page Contents: POWER			
Size: B	DWG NO: 509122.0001	Revision: A	Sheet: 30 of 30
Date: Thursday, February 01, 2007			

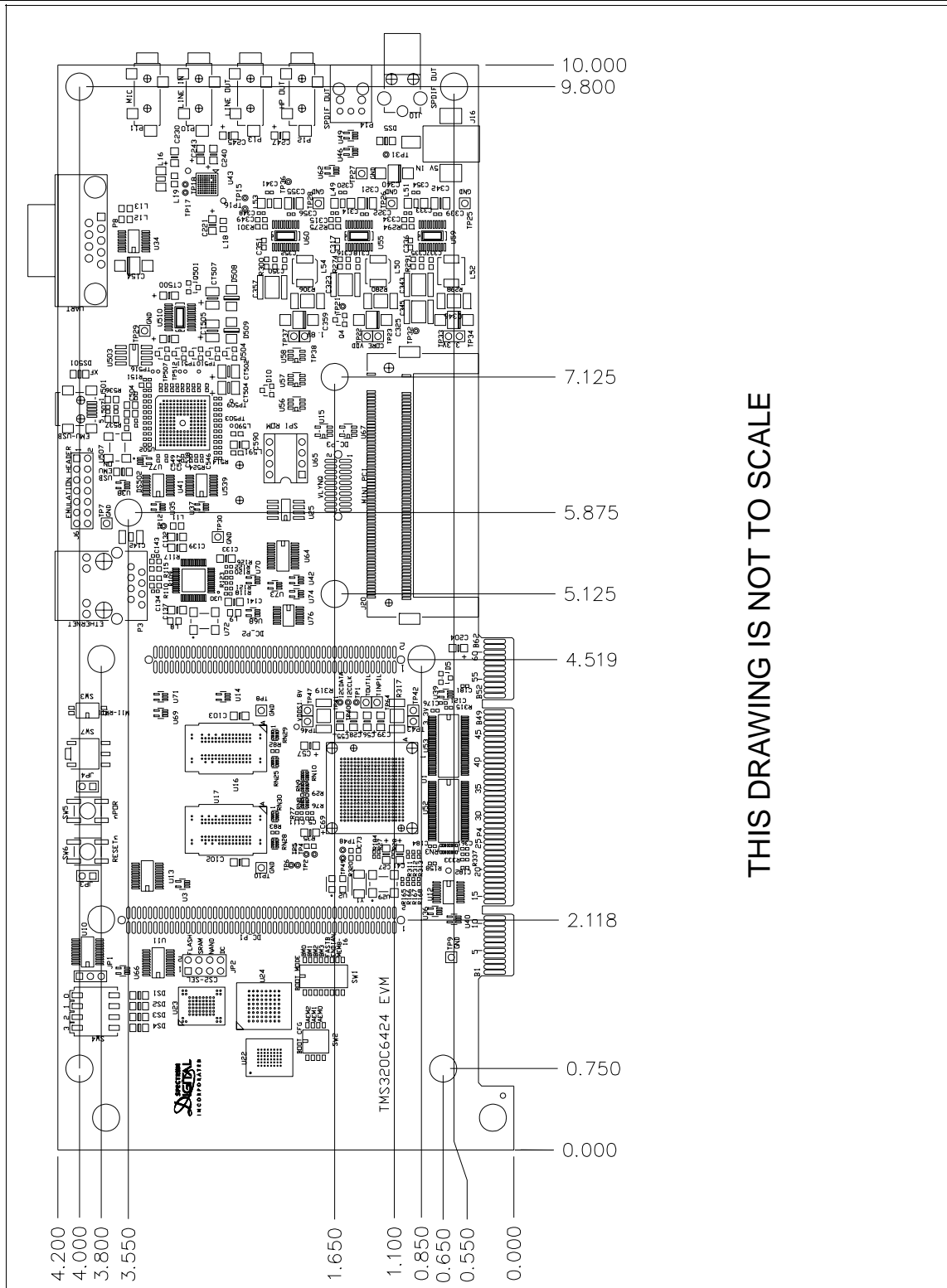
Spectrum Digital, Inc

Appendix B

Mechanical Information

This appendix contains the mechanical information about the C6424 EVM produced by Spectrum Digital.

Spectrum Digital, Inc



THIS DRAWING IS NOT TO SCALE



Distributor of Spectrum Digital Inc: Excellent Integrated System Limited

Datasheet of 702070 - MOD EVAL 600MHZ TMS420C6424

Contact us: sales@integrated-circuit.com Website: www.integrated-circuit.com

Spectrum Digital, Inc



Spectrum Digital, Inc



Distributor of Spectrum Digital Inc: Excellent Integrated System Limited

Datasheet of 702070 - MOD EVAL 600MHZ TMS420C6424

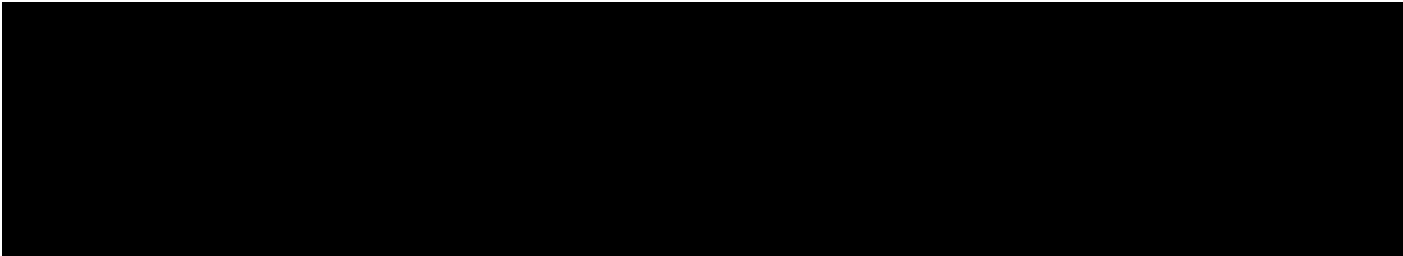
Contact us: sales@integrated-circuit.com Website: www.integrated-circuit.com



Distributor of Spectrum Digital Inc: Excellent Integrated System Limited

Datasheet of 702070 - MOD EVAL 600MHZ TMS420C6424

Contact us: sales@integrated-circuit.com Website: www.integrated-circuit.com



Printed in U.S.A., February 2007
509125-0001 Rev A