

Excellent Integrated System Limited

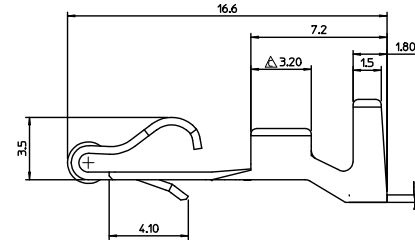
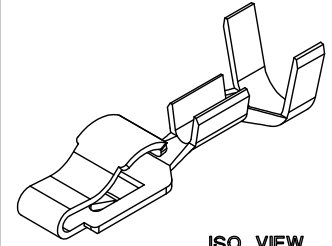
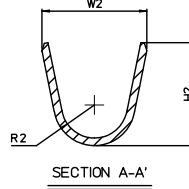
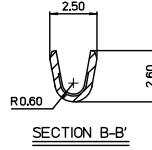
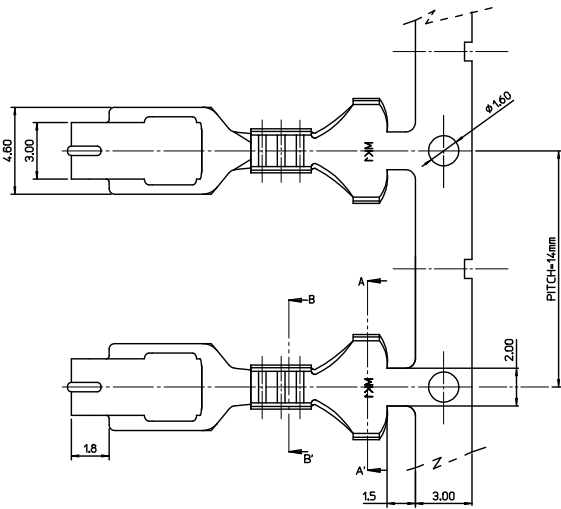
Stocking Distributor

Click to view price, real time Inventory, Delivery & Lifecycle Information:

[Molex Connector Corporation](#)
[0498699702](#)

For any questions, you can email us directly:

sales@integrated-circuit.com



NOTES

1. MATERIAL : BRASS(C2600), 0.4mm THICKNESS
2. FINISH : 0.8 -1.8 μ TIN PLATING OVERALL
0.3-0.84m COPPER PLATING
3. APPLICABLE SOCKET
P217W : 49454,104035,104036,104037,104038,104039
WY21W, W21W : 104133, 104134
4. APPLICABLE WIRE SEAL : 49454-9002
5. APPLICABLE BULB : P277W, W21W, WY21W

<TABLE1>

NO.	MATERIAL NO.	ORDER NO.	TYPE	DIMENSIONS			WIRE RANGE
				W2	H2	R2	
1	498699702	49869-9702	SEALED	5.55	5.35	1.75	AVS 0.5-0.85SQ, FLRY-A 0.75SQ
2	498699102	49869-9102	UNSEALED	4.2	4.1	1.2	AVS(AVSS) 0.5-0.85SQ, FLRY-A 0.75SQ

CHANGED DIMENSION	2015/06/16
EC NO: KTR2015-0118	
DRWN:JKSE001	
CHKD:	
APPR: JYCHOJ	2015/06/16
DESCRIPTION	
REV	

QUALITY SYMBOLS	
▽=0	
▽=0	
GENERAL TOLERANCES (UNLESS SPECIFIED)	
	mm
	INCH
4 PLACES	± 0.20
3 PLACES	± 0.25
2 PLACES	± 0.30
1 PLACE	± 0.40
ANGULAR ± 1 °	
DRAFT WHERE APPLICABLE MUST REMAIN WITHIN DIMENSIONS	

DIMENSION STYLE	
MM ONLY	
DRAWN BY	DATE
SMKIM	2009/03/16
CHECKED BY	DATE
BCYOON	2009/03/16
APPROVED BY	DATE
EHJUNG	2009/03/16
MATERIAL NO.	DOCUMENT NO.
SEE TABLE1	SD-49869-001
SIZE	
A3	

SCALE: 5:1 DESIGN UNITS: METRIC THIRD ANGLE PROJECTION

TITLE: SINGLE CONTACT TERMINAL FOR S8 & T20 SOCKET

MOLEX MOLEX INCORPORATED

SHEET NO. 1 OF 1

THIS DRAWING CONTAINS INFORMATION THAT IS PROPRIETARY TO MOLEX INCORPORATED AND SHOULD NOT BE USED WITHOUT WRITTEN PERMISSION

