

Excellent Integrated System Limited

Stocking Distributor

Click to view price, real time Inventory, Delivery & Lifecycle Information:

[Molex Connector Corporation](#)
[0622029745](#)

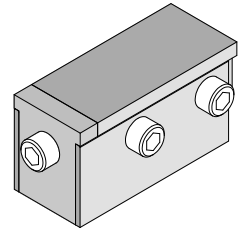
For any questions, you can email us directly:

sales@integrated-circuit.com

**1-by-1 SFP+
Insertion Tool**



**Application Tooling
Specification Sheet**



Order No. 62202-9745

FEATURES

- Lightweight tool used in the insertion of a SFP connector in a PCB
- Inserts connector to a PCB without damage to the board
- Use tool 62202-9750 for removing connectors

SCOPE

Products: Small Form-factor Pluggable (SFP+) One Piece Cage, Single Port Connector with Press-fit PC Tails.

Connector Series No.	Connector Order no.					
74737	74737-0001	74737-0002	74737-0003	74737-0004	74737-0005	74737-0006
	74737-0009	74737-0012	74737-0014	74737-0019	74737-0020	74373-0029
	74737-0031	74737-0032	74737-0033	74737-0034	74737-0035	74737-0036
	74737-0037	74737-0201	74737-0203	74737-9993	74737-9994	74737-9997
	74737-9998	74737-9999				

Notes:

1. See the following pages for tooling operation instructions.
2. These tools require a "Keep Out Zone" around the connector free of components. The rear of the connector should be .200" (5.08mm). The right and left sides should be .080" (2.00mm). See Figure 1.

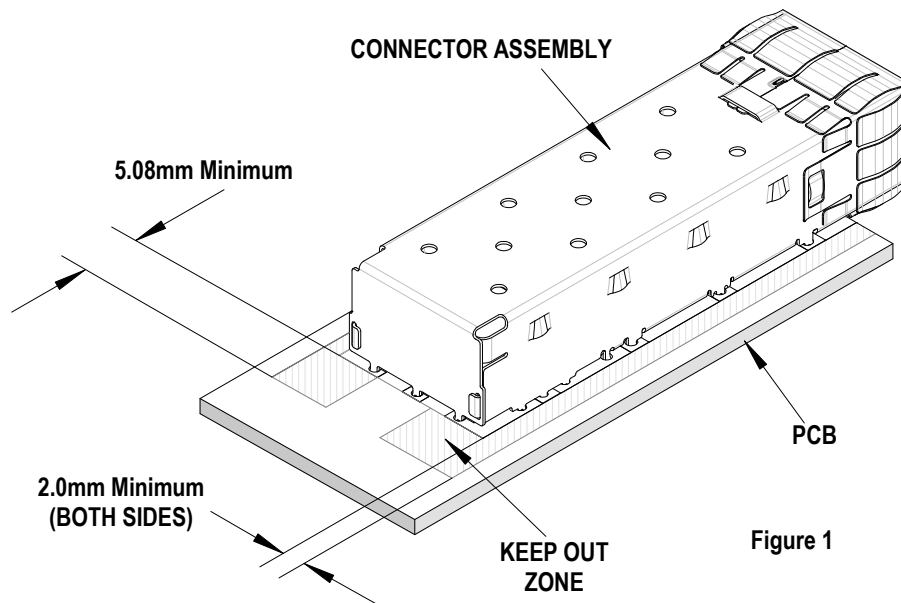


Figure 1

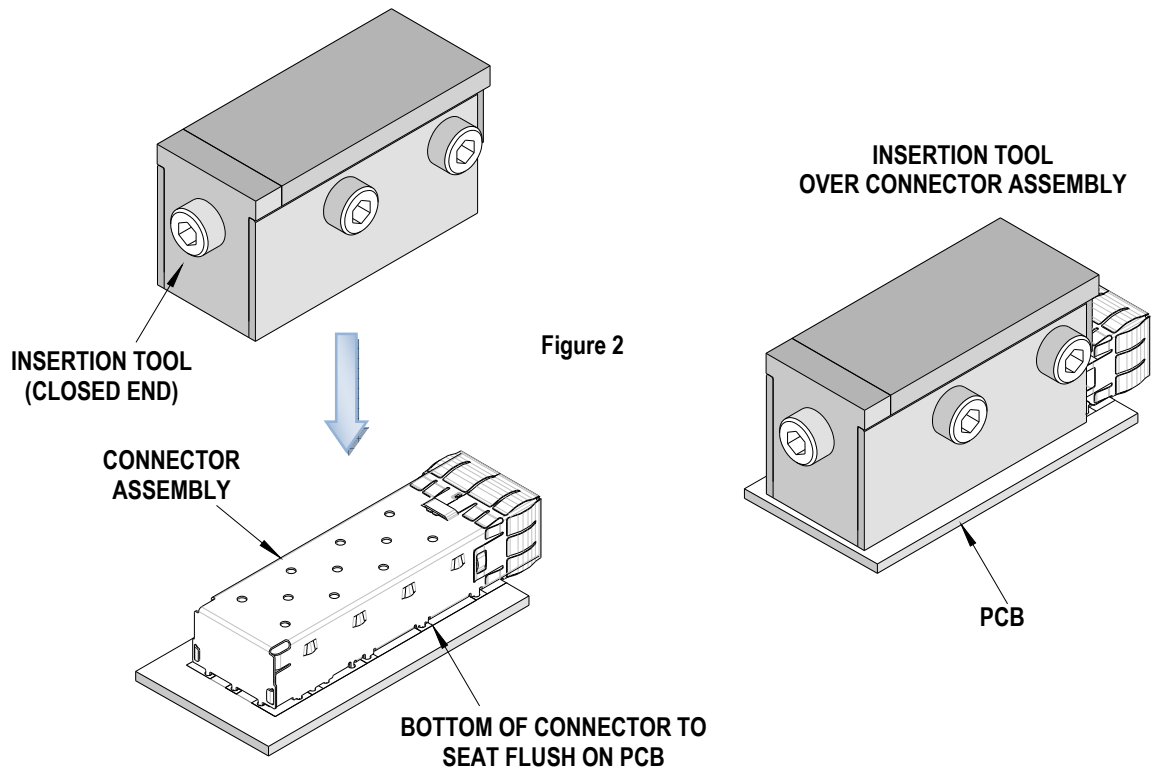
SFP+ Multi-Port Connector Tooling

Description

The following Instructions are used for inserting the 1 by 1 connector into a PCB.

Operation

1. Place a connector assembly on the PCB.
2. Place the tool on the connector assembly (closed end to the back end of the connector). See Figure 2.
3. Place tool, connector, and PCB, in a press of suitable size and force, and seat the connector assembly shown. The support under the PCB must have clearance for the connector pins if they come through the PCB.



<http://www.molex.com>