

## **Excellent Integrated System Limited**

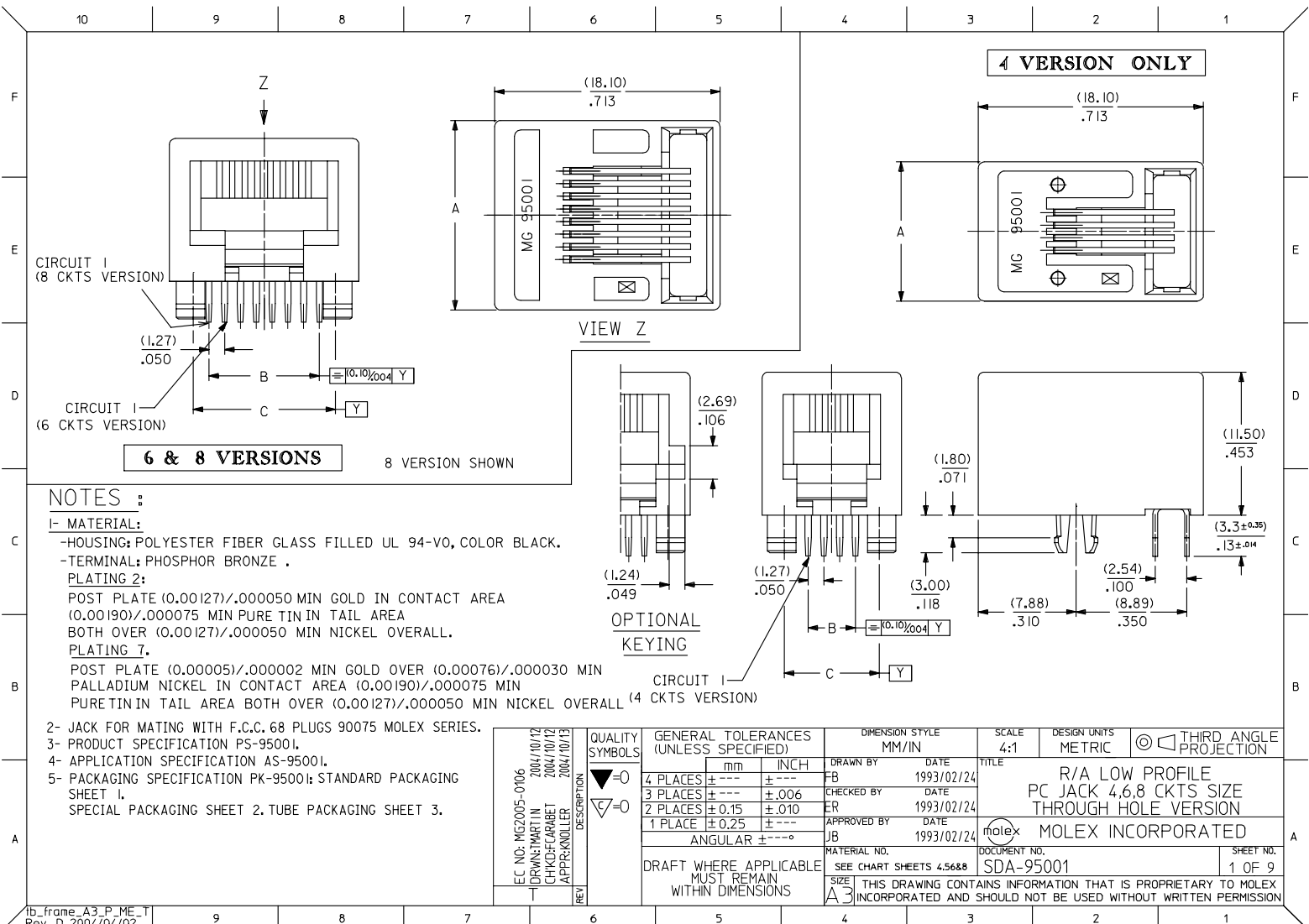
Stocking Distributor

Click to view price, real time Inventory, Delivery & Lifecycle Information:

[Molex Connector Corporation](#)  
[95001-2441](#)

For any questions, you can email us directly:

[sales@integrated-circuit.com](mailto:sales@integrated-circuit.com)



**6 & 8 VERSIONS**

**4 VERSION ONLY**

**NOTES :**

- 1- MATERIAL:
  - HOUSING: POLYESTER FIBER GLASS FILLED UL 94-V0, COLOR BLACK.
  - TERMINAL: PHOSPHOR BRONZE .
- PLATING 2:
  - POST PLATE (0.00127)/.000050 MIN GOLD IN CONTACT AREA
  - (0.00190)/.000075 MIN PURE TIN IN TAIL AREA
  - BOTH OVER (0.00127)/.000050 MIN NICKEL OVERALL.
- PLATING 7:
  - POST PLATE (0.00005)/.000002 MIN GOLD OVER (0.00076)/.000030 MIN
  - PALLADIUM NICKEL IN CONTACT AREA (0.00190)/.000075 MIN
  - PURE TIN IN TAIL AREA BOTH OVER (0.00127)/.000050 MIN NICKEL OVERALL (4 CKTS VERSION)

- 2- JACK FOR MATING WITH F.C.C. 68 PLUGS 90075 MOLEX SERIES.
- 3- PRODUCT SPECIFICATION PS-95001.
- 4- APPLICATION SPECIFICATION AS-95001.
- 5- PACKAGING SPECIFICATION PK-95001; STANDARD PACKAGING SHEET 1, SPECIAL PACKAGING SHEET 2, TUBE PACKAGING SHEET 3.

EC NO: MG2005-0106 DRAWN: MARTIN 2004/10/12 CHKD: CARABET 2004/10/12 APPR: KNOLLER 2004/10/13	QUALITY SYMBOLS ▽=0 ∇=0	GENERAL TOLERANCES (UNLESS SPECIFIED)		DIMENSION STYLE MM/IN		SCALE 4:1	DESIGN UNITS METRIC	THIRD ANGLE PROJECTION	
		4 PLACES ± .15 ± .010 3 PLACES ± .15 ± .010 2 PLACES ± 0.25 ± .010 1 PLACE ± 0.25 ± .010	ANGULAR ± .5°	DRAWN BY FB CHECKED BY ER APPROVED BY JB	DATE 1993/02/24 DATE 1993/02/24 DATE 1993/02/24	TITLE R/A LOW PROFILE PC JACK 4,6,8 CKTS SIZE THROUGH HOLE VERSION			
		DRAFT WHERE APPLICABLE MUST REMAIN WITHIN DIMENSIONS		MATERIAL NO. SEE CHART SHEETS 4.5&6&8	DOCUMENT NO. SDA-95001		MOLEX INCORPORATED		
		THIS DRAWING CONTAINS INFORMATION THAT IS PROPRIETARY TO MOLEX INCORPORATED AND SHOULD NOT BE USED WITHOUT WRITTEN PERMISSION							

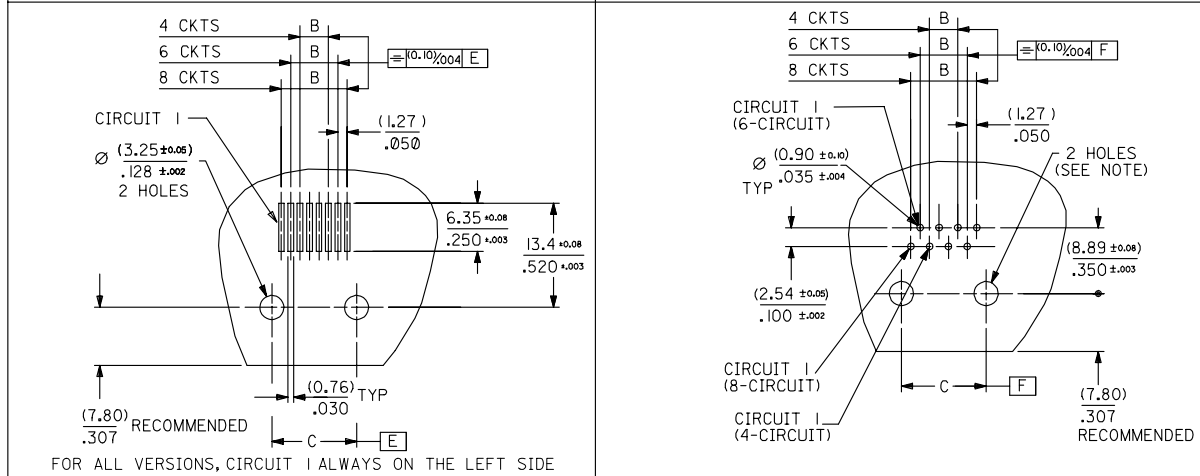
10 9 8 7 6 5 4 3 2 1

TYPE DIM.	POS. 4	POS. 6		POS. 8		
	4 CKTS.	4 CKTS.	6 CKTS.	4 CKTS.	6 CKTS.	8 CKTS.
A	(11.18) / .440	(13.21) / .520	(13.21) / .520	(15.24) / .600	(15.24) / .600	(15.24) / .600
C $\pm(0.05) / \pm.002$	(7.62) / .300	(10.16) / .400	(10.16) / .400	(11.43) / .450	(11.43) / .450	(11.43) / .450
B $\pm(0.05) / \pm.002$	(3.81) / .150	(3.81) / .150	(6.35) / .250	(3.81) / .150	(6.35) / .250	(8.89) / .350

P.C.B. MOUNTING PATTERNS - SEE FROM COMPONENT SIDE

FOR SMT JACK TYPE (SURFACE MOUNT)

FOR STANDARD JACK TYPE (THROUGH HOLE)



FOR ALL VERSIONS, CIRCUIT 1 ALWAYS ON THE LEFT SIDE

NOTE:  
FOR CONVECTION SOLDERING: DIA 3.25±0.05 / .128±.002  
FOR WAVE SOLDERING: DIA 3.20±0.10 / .126±.004

EC NO: MG2005-0106 2004/10/12 DRW: MARTIN CHK: CARABET APP: SKOLLER 2004/10/12 2004/10/13	QUALITY SYMBOLS ▽=0 ▽=0 DESCRIPTION REV	GENERAL TOLERANCES (UNLESS SPECIFIED)		DIMENSION STYLE MM/IN		SCALE 2:1	DESIGN UNITS METRIC	THIRD ANGLE PROJECTION	
		4 PLACES ± --- ± --- 3 PLACES ± --- ± .006 2 PLACES ± 0.15 ± .010 1 PLACE ± 0.25 ± --- ANGULAR ± ---°	mm INCH DRAWN BY FB DATE 2004/09/25 CHECKED BY DATE APPROVED BY DATE	TITLE R/A LOW PROFILE JACK PC JACK 4,6,8 CKT SIZE SMT AND STANDARD VERSION		MATERIAL NO. SEE CHART SHEETS 4.5&6		DOCUMENT NO. SDA-95001	SHEET NO. 3 OF 9
		DRAFT WHERE APPLICABLE MUST REMAIN WITHIN DIMENSIONS		SIZE A3		THIS DRAWING CONTAINS INFORMATION THAT IS PROPRIETARY TO MOLEX INCORPORATED AND SHOULD NOT BE USED WITHOUT WRITTEN PERMISSION			

9 8 7 6 5 4 3 2 1

10 9 8 7 6 5 4 3 2 1

**STANDARD PACKAGING OPEN TRAY ,SEE PACKAGING SPEC PK95001 SHEET 1**

PART NO FOR JACK ASSEMBLY

HOUSING SIZE	LOADED CONTACTS	PLATING	STANDARD VERSION						SPECIAL VERSION HIGH TEMPERATURE						
			POLYESTER FIBER GLASS FILED 94V0,COLOR BLACK.						POLYAMIDE FIBER GLASS FILLED COLOR BLACK						
			NO KEY NOT RIBBED	TOOLED	KEY NOT RIBBED	TOOLED	TOOLED	TOOLED	NO KEY NOT RIBBED	TOOLED	KEY NOT RIBBED	TOOLED			
4	4	2	95001-2441	X	95001-2442							95001-8441	X		
6	4	2	95001-2641	X	95001-2642								95001-8641	X	
6	6	2	95001-2661	X	95001-2662								95001-8661	X	
8	4	2	95001-2841		95001-2842										
8	6	2	95001-2861	X	95001-2862										
8	8	2	95001-2881	X	95001-2882	X							95001-8881	X	

EC NO: MG2005-0106 DRAWN: MARTIN 2004/10/12 CHKD: CARABET 2004/10/12 APPR: KNOLLER 2004/10/13	QUALITY SYMBOLS ▽=0 ▽=0	GENERAL TOLERANCES (UNLESS SPECIFIED) mm INCH 4 PLACES ± --- ± --- 3 PLACES ± --- ± --- 2 PLACES ± --- ± --- 1 PLACE ± --- ± --- ANGULAR ± ---°	DIMENSION STYLE MM ONLY DRAWN BY DATE DP 1989/06/01 CHECKED BY DATE FB 1989/06/01 APPROVED BY DATE JB 1989/06/01	SCALE --- DESIGN UNITS METRIC THIRD ANGLE PROJECTION	TITLE LOW PROFILE R/A JACK STANDARD AND SMT VERSION STABDARD OPEN TRAY VERS MOLEX INCORPORATED
	DRAFT WHERE APPLICABLE MUST REMAIN WITHIN DIMENSIONS		MATERIAL NO. SEE CHART DOCUMENT NO. SDA-95001	SHEET NO. 4 OF 9	
	THIS DRAWING CONTAINS INFORMATION THAT IS PROPRIETARY TO MOLEX INCORPORATED AND SHOULD NOT BE USED WITHOUT WRITTEN PERMISSION				

9 8 7 6 5 4 3 2 1