

Excellent Integrated System Limited

Stocking Distributor

Click to view price, real time Inventory, Delivery & Lifecycle Information:

[Molex Connector Corporation](#)
[0732510111](#)

For any questions, you can email us directly:
sales@integrated-circuit.com

MATERIALS AND FINISHES

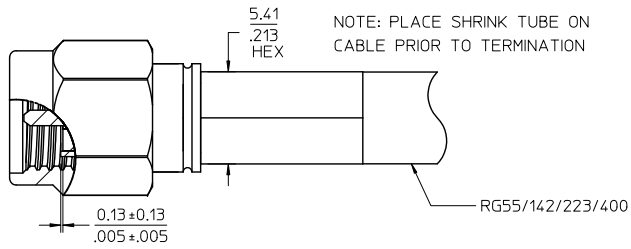
BODY AND COUPLING NUT STAINLESS STEEL
PASSIVATED

CENTER CONTACT BRASS
PLATED GOLD

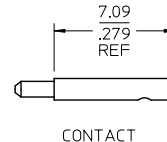
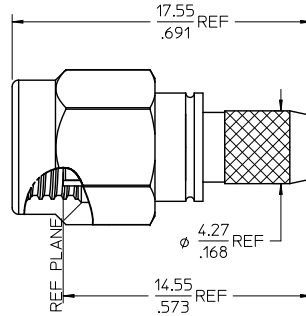
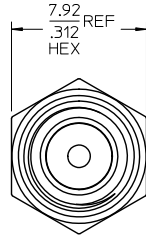
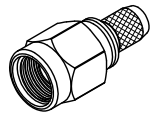
INSULATOR TEFLON

CRIMP TUBE BRASS
PLATED NICKEL

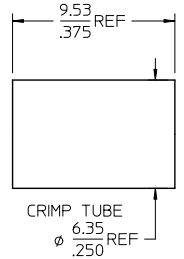
SHRINK TUBE VERSIFIT OR EQUIVALENT



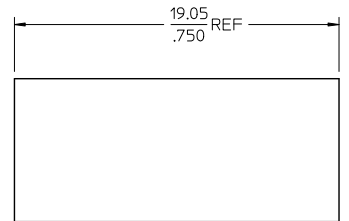
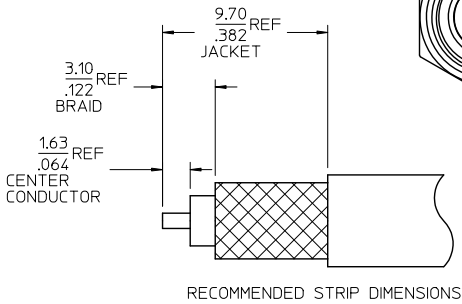
NOTE: PLACE SHRINK TUBE ON
CABLE PRIOR TO TERMINATION



CONTACT



CRIMP TUBE



SHRINK TUBE

LABEL FORMAT FOR
73251-0112

PART NUMBER: 73251-0111
ORDER NUMBER: 73251-0112
MOLEX
DATE: YYWW

73251-0112	ONE PIECE 73251-0111 PER BAG
73251-0111	BULK
PART NO.	PACKAGING

ES-89675-1570	CABLE ASSY INSTRUCT.
MIL-STD-348A, FIG. 310.1	INTERFACE
SPECIFICATION	DESCRIPTION

CHG: UPDATE LABEL FOR -0112 EC NO: URF2012-0380 DRAWN BY: DRW/BOMALLEY CHECKED BY: CHK/BOR APPR: JMT/ENER 2012/01/04 2012/01/04 2012/01/04	QUALITY SYMBOLS ▽=0 ▽=0	GENERAL TOLERANCES (UNLESS SPECIFIED)		DIMENSION STYLE MM/IN	SCALE DESIGN UNITS METRIC	THIRD ANGLE PROJECTION	DRAWN BY: GMH DATE: 1997/11/07		TITLE SMA PLUG, STR, CRIMP TYPE FOR RG55/142/223/400 SMA-PC
		4 PLACES ± --- ± ---	mm				INCH	CHECKED BY: DATE: 1998/01/05	
		3 PLACES ± --- ± ---					APPROVED BY: GMH DATE: 1997/01/06		
		2 PLACES ± --- ± ---					MATERIAL NO. SEE TABLE		
		ANGULAR ± 2 °						DOCUMENT NO. SD-73251-011	
DRAFT WHERE APPLICABLE MUST REMAIN WITHIN DIMENSIONS				SIZE C		THIS DRAWING CONTAINS INFORMATION THAT IS PROPRIETARY TO MOLEX INCORPORATED AND SHOULD NOT BE USED WITHOUT WRITTEN PERMISSION		SHEET NO. 1 OF 1	