

Excellent Integrated System Limited

Stocking Distributor

Click to view price, real time Inventory, Delivery & Lifecycle Information:

[Molex Connector Corporation](#)
[0638241800](#)

For any questions, you can email us directly:

sales@integrated-circuit.com

Extractor Tool for CTX280 Receptacle Crimp Terminal

Extractor Tool		
	Application Tooling Specification Sheet	

FEATURES

- This Extractor Tool is for the removal of a CTX280 Receptacle Crimp Terminal from a CMX Connector.

SCOPE

Products: CTX280 Receptacle Crimp Terminal for CMX Connector.

Housing Series No.	Terminal Series No.	Terminal Order No.					
198009	34808	34808-1001	34808-1002	34808-1003	34808-1004	34808-1005	34808-1006
		34808-1007	34808-1008	34808-1009			

WARNINGS: (In some cases)

1. Before extracting the crimp terminals, the tie wrap and the wire cap will need to be removed. Refer to the application specification RAS-198009-001 for instructions.
2. Before extracting the crimp terminals, the Secondary Locking (TPA) will need to be retracted to the pre-locking position. See below for instructions:
 For 53 Way Connect see document ATS-638240100.
 For 32 Way Connect see document ATS-638139900.
 For 27 Way and 48 Way Connect see document ATS-638138200.

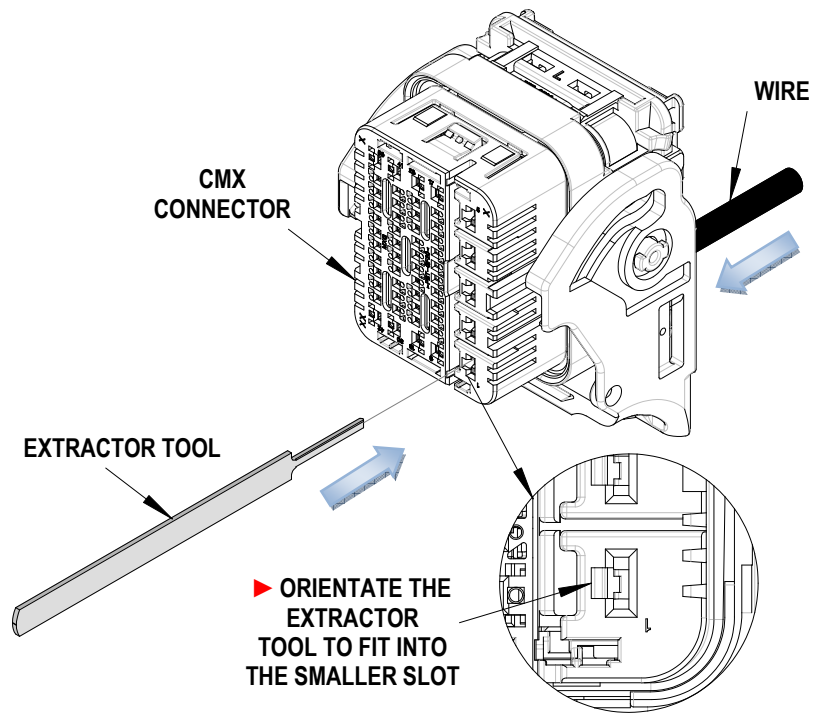


Figure 1

Extractor Tool for CTX280 Receptacle Crimp Terminal

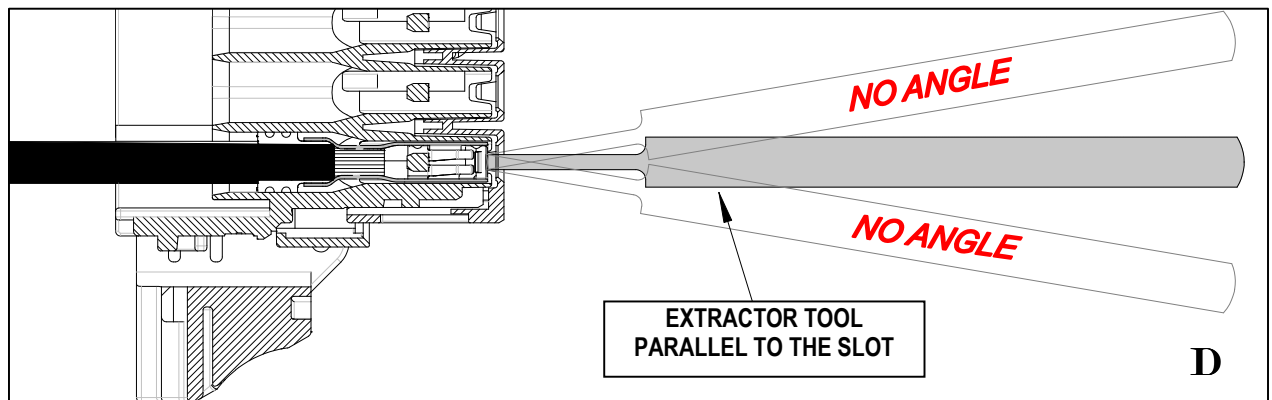
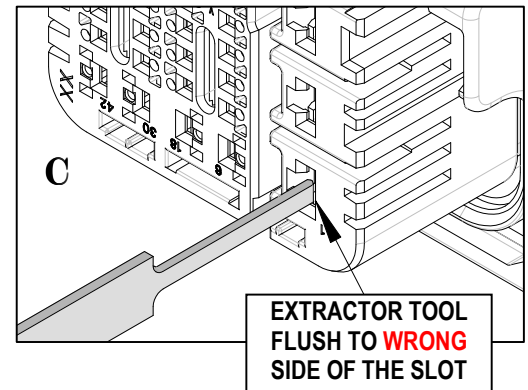
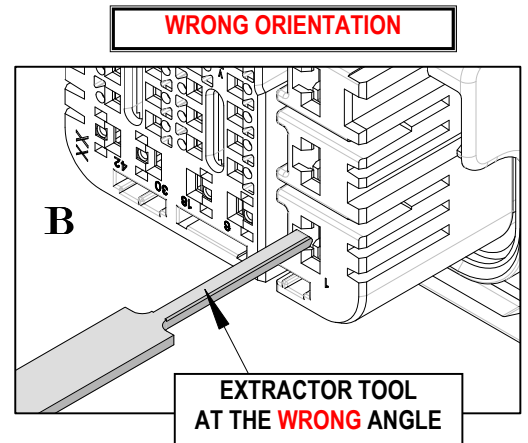
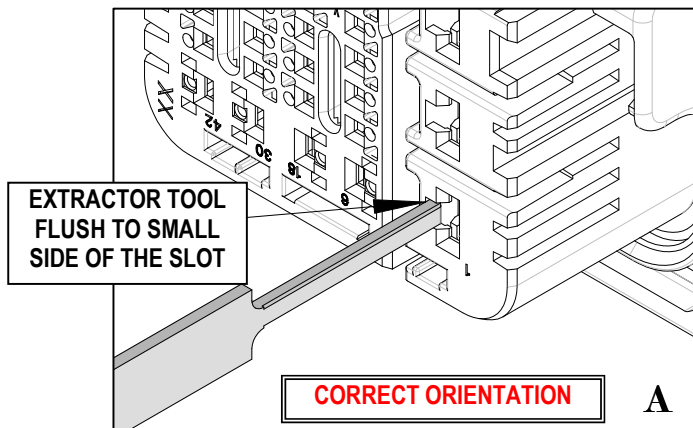
OPERATION:

When removing a damaged crimped wire from the CMX connector follow the steps below:

1. Position the blade of the extraction tool into the small slot in the front face of the housing as shown in Figure 1. Use the identifying markings on both the front and back of the connector to locate the opening used to extract the crimped wire.

► **Extractor Tool Orientation**

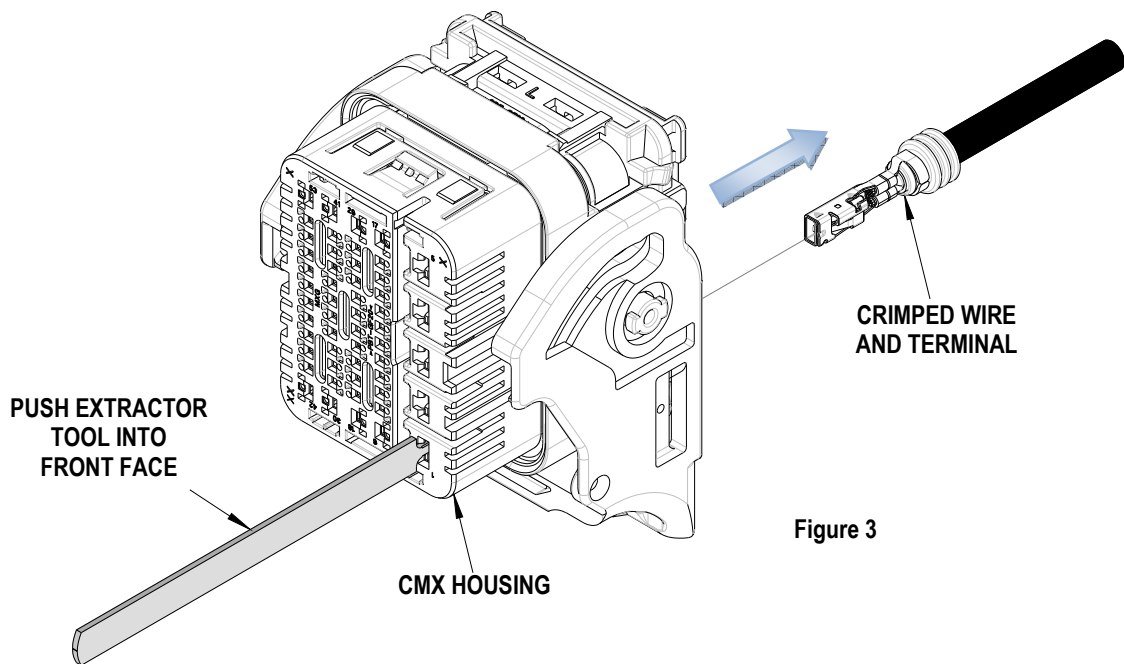
1. Figure A shows the proper placement of the extractor tool.
2. Figure B is orientated 90° in the wrong direction.
3. Figure C is pushed to the wrong side of the slot.
4. Figure D shows the extractor tool coming in at different angles. It should always be inserted parallel to the slot



Extractor Tool for CTX280 Receptacle Crimp Terminal

5. Push extractor tool into the desired slot until it clicks or comes to a stop. Do not force the extractor tool any further or there can be damage to the housing. See Figure 3.
6. Gently push the wire forward towards the housing and then pull out of the CMX housing.
7. Molex does not offer repair parts for Extractor Tools due to the inexpensive nature of these tools.

Caution: After extracting the desired crimp terminals, be sure to seat the Secondary Locking (TPA).



Molex does not offer repair parts for Extractor Tools due to the inexpensive nature of these tools.

<http://www.molex.com>