

Excellent Integrated System Limited

Stocking Distributor

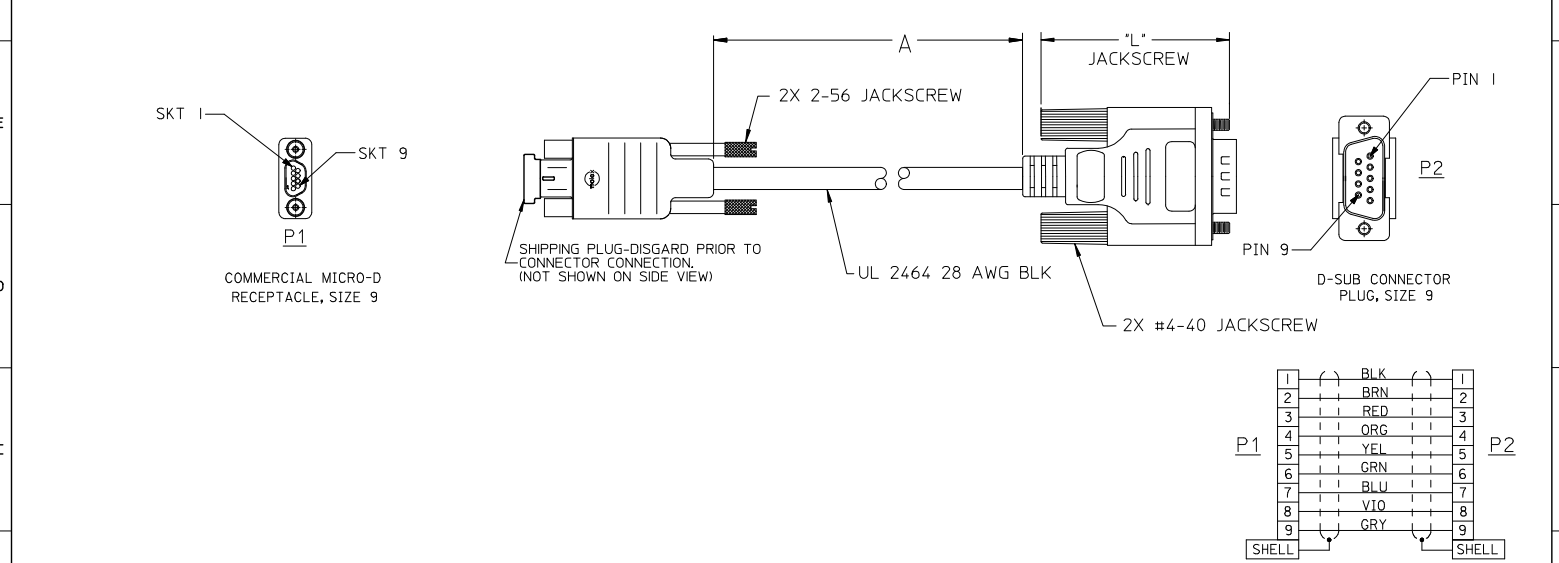
Click to view price, real time Inventory, Delivery & Lifecycle Information:

[Molex Connector Corporation](#)
[0834219036](#)

For any questions, you can email us directly:

sales@integrated-circuit.com

10	9	8	7	6	5	4	3	2	83421
MATERIAL NO.	ENGINEERING NO.	CUT LENGTH "A"	TOLERANCES	DIM "L"					
834219036	83421-9036	18.5 / 470.0	± .5 / 13.00	1.83 / 46.5					
834219037	93421-9037	36.5 / 927.1	± .5 / 13.00	1.83 / 46.5					
834219038	93421-9038	72.5 / 1841.5	± .5 / 13.00	1.83 / 46.5					
834219286	83421-9286	196.8 / 5000.0	+3.94 / 100.0	1.73 / 44.0					



- NOTE: UNLESS OTHERWISE SPECIFIED.
- CABLE: UL 2464, 28 AWG. OR EQUIVALENT
9 TOTAL CONDUCTORS, TINNED COPPER, 7 STRANDS.
WIRE INSULATION: PVC.
SHIELD: AL-FOL / MYLAR, INCLUDING DRAIN WIRE & BRAID
OUTER CABLE JACKET: PVC, COLOR BLACK.
 - REFER TO PS-83421-9000 FOR PRODUCT SPECIFICATION.
REFER TO DWG. E-83421-001 FOR ASSEMBLY INSTRUCTION.
 - MICRO D 9 SOCKET CONNECTOR:
INTERNAL INSULATOR: THERMOPLASTIC, UL 94V-0
CONTACTS: COPPER ALLOY, GOLD PLATE OVER NICKEL PLATING.
MOLEX CONTACT # 83000-9503
INTERNAL BACKSHELL: NICKEL PLATED STEEL,
EXTERNAL SHROUD: NICKEL PLATED STEEL.
EXTERNAL INSULATOR: BLACK MOLDED PVC.
 - D-SUB HIGH DENSITY 9 PIN MALE CONNECTOR (SOLDER TYPE)
WITH OVERMOLDED INSULATOR.
 - MARKING: NONE.
 - ASSEMBLY IS RoHS COMPLIANT.

REV LETTER 'I' WAS INTENTIONALLY NOT USED

REMOVE 834219289 EC NO: WNA2010-0093 DRAWN BY: CHYKORUPERT CHECKED BY: APPRE: JIMURPHY 2009/08/17 2009/09/23	QUALITY SYMBOLS	GENERAL TOLERANCES (UNLESS SPECIFIED)	DIMENSION STYLE	SCALE	DESIGN UNITS	THIRD ANGLE PROJECTION
	▽=0 ▽=0	mm INCH 4 PLACES ± --- ± --- 3 PLACES ± --- ± .005 2 PLACES ± 0.13 ± .020 1 PLACE ± 0.51 ± --- ANGULAR ± .5 °	IN/MM		INCH	
		DRAFT WHERE APPLICABLE MUST REMAIN WITHIN DIMENSIONS	DRAWN BY: J. LOMASTRO CHECKED BY: R. DEROSS APPROVED BY: R. DEROSS DATE: 02-17-06 DATE: 02-21-06 DATE: 02-21-06	TITLE		
			MATERIAL NO. SEE CHART DOCUMENT NO. SD-83421-021 SHEET NO. 1 OF 1	CABLE ASSEMBLY 9 SKT COMM. MICRO D 9 PIN D-SUB MOLEX INCORPORATED		