

Excellent Integrated System Limited

Stocking Distributor

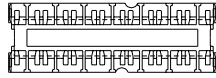
Click to view price, real time Inventory, Delivery & Lifecycle Information:

[Molex Connector Corporation](#)
[43980-1005](#)

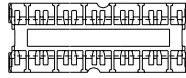
For any questions, you can email us directly:

sales@integrated-circuit.com

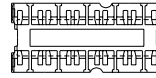
MATERIAL-NUMBER	CIRCUITS	DIM. "A"
43980-1001	6	31.30/(1.232)
43980-1002	8	41.30/(1.626)
43980-1003	10	51.30/(2.020)
43980-1004	12	61.30/(2.413)
43980-1005	14	71.30/(2.807)



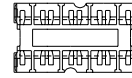
14 CIRCUIT



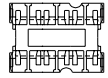
12 CIRCUIT



10 CIRCUIT



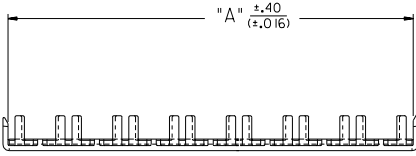
8 CIRCUIT



6 CIRCUIT

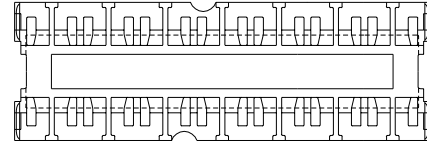
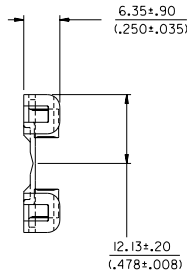
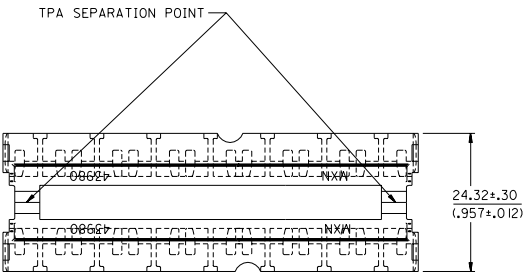
CIRCUIT SIZES

SCALE: 1:1



NOTES:

1. MATERIAL: POLYESTER, U.L. 94V-0. COLOR: NATURAL (WHITE)
2. PRODUCT SPEC.: NONE
3. USED ON 43914 RECEPTACLE HOUSING AND 43938 PLUG HOUSING.



ADDED TOLERANCES EC NO. UCR 1999-0808 DRAWN: COMERC 99/05/21 CHK: COMERC 99/05/21 APPR: COMERC 99/05/21	QUALITY SYMBOLS MAJOR ∇=0 CRITICAL ∇=0	GENERAL TOLERANCES: (UNLESS SPECIFIED) <table border="1"> <thead> <tr> <th></th> <th>mm</th> <th>INCH</th> </tr> </thead> <tbody> <tr> <td>4 PLACES</td> <td>±0.---</td> <td>±.---</td> </tr> <tr> <td>3 PLACES</td> <td>±0.---</td> <td>±.---</td> </tr> <tr> <td>2 PLACES</td> <td>±0.---</td> <td>±.---</td> </tr> <tr> <td>1 PLACE</td> <td>±0.---</td> <td>±.---</td> </tr> </tbody> </table>		mm	INCH	4 PLACES	±0.---	±.---	3 PLACES	±0.---	±.---	2 PLACES	±0.---	±.---	1 PLACE	±0.---	±.---	SCALE 2: 1 DESIGN UNITS <input checked="" type="checkbox"/> mm <input type="checkbox"/> INCH	DRAWN BY & DATE COMERC 97/08/21 CHECKED BY & DATE COMERC 97/08/25 APPROVED BY & DATE FRY 97/08/26	DIMENSIONS: <input checked="" type="checkbox"/> mm <input type="checkbox"/> INCH <input type="checkbox"/> mm ONLY <input type="checkbox"/> INCH <input type="checkbox"/> mm	SHT 1 REV REVISE ON CAD ONLY
		mm	INCH																		
	4 PLACES	±0.---	±.---																		
	3 PLACES	±0.---	±.---																		
2 PLACES	±0.---	±.---																			
1 PLACE	±0.---	±.---																			
REV B I	DESCRIPTION TPA SEPARATION POINT	ANGULAR ± °	THIRD ANGLE PROJECTION	TITLE: TWIN TPA'S DUAL ROW 6-14 CIRCUIT (MINI-FIT SR.)	MOLEX INCORPORATED	SHEET NO. 1 OF 1															
DRAFT WHERE APPLICABLE MUST REMAIN WITHIN DIMENSIONS		CAD FILENAME S4398002.DGN	MATERIAL NO. SEE CHART	DRAWING NO. SD-43980-002	SIZE C	THIS DRAWING CONTAINS INFORMATION THAT IS PROPRIETARY TO MOLEX INCORPORATED AND SHOULD NOT BE USED WITHOUT WRITTEN PERMISSION.															
LBORD.DGN REV A 36/06/12 LEVEL 5																					

12

11

10

9

8

7

6

5

4

3

2

1