

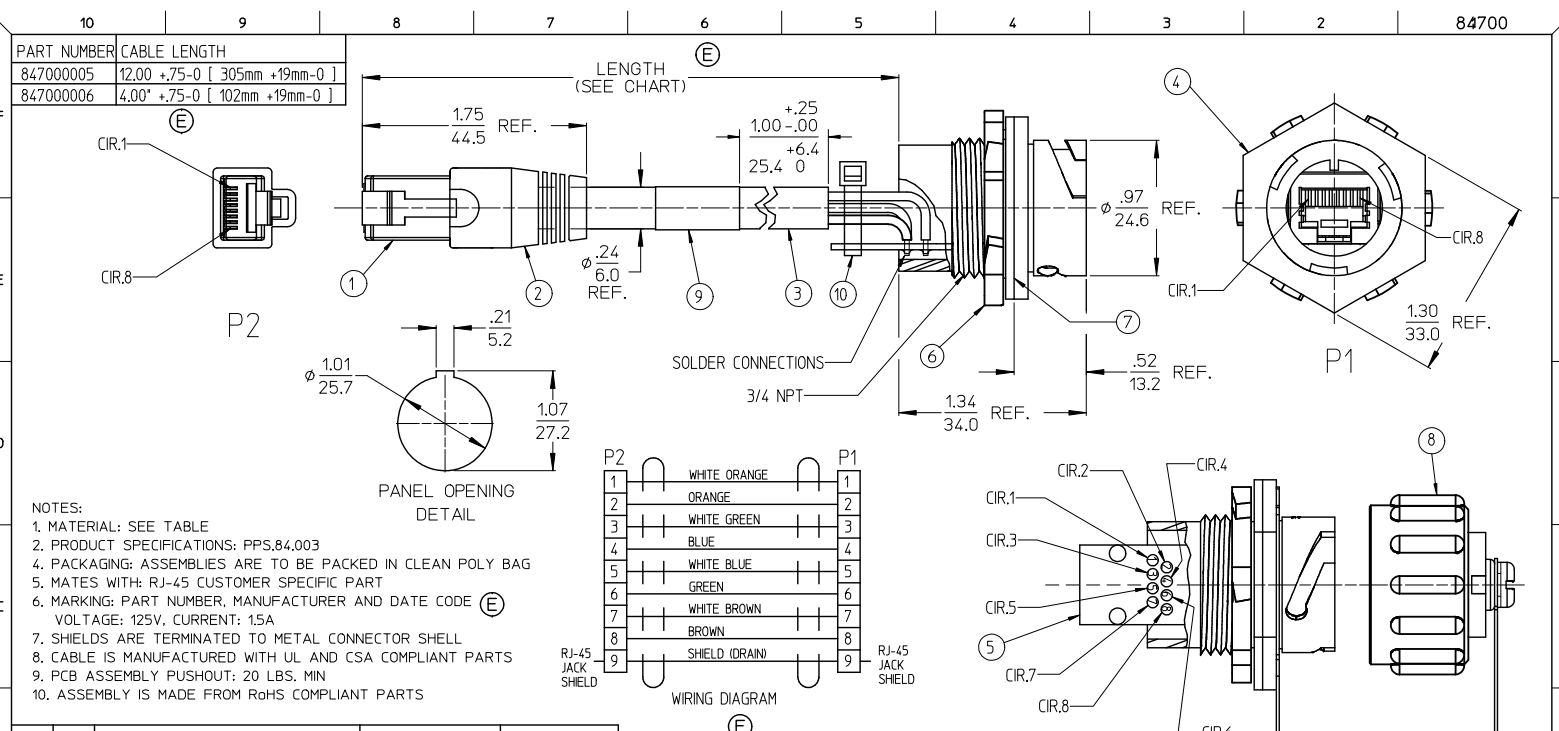
## Excellent Integrated System Limited

Stocking Distributor

Click to view price, real time Inventory, Delivery & Lifecycle Information:

[Molex Connector Corporation](#)  
[0847000005](#)

For any questions, you can email us directly:  
[sales@integrated-circuit.com](mailto:sales@integrated-circuit.com)



- NOTES:
1. MATERIAL: SEE TABLE
  2. PRODUCT SPECIFICATIONS: PPS,84,003
  4. PACKAGING: ASSEMBLIES ARE TO BE PACKED IN CLEAN POLY BAG
  5. MATES WITH: RJ-45 CUSTOMER SPECIFIC PART
  6. MARKING: PART NUMBER, MANUFACTURER AND DATE CODE (E)
  - VOLTAGE: 125V, CURRENT: 15A
  7. SHIELDS ARE TERMINATED TO METAL CONNECTOR SHELL
  8. CABLE IS MANUFACTURED WITH UL AND CSA COMPLIANT PARTS
  9. PCB ASSEMBLY PUSHOUT: 20 LBS. MIN
  10. ASSEMBLY IS MADE FROM RoHS COMPLIANT PARTS

ITEM	QTY.	DESCRIPTION	MATERIAL	FINISH
10	1	CABLE TIE	NYLON	WHITE
9	1	LABEL	MYLAR	BLACK/CHROME
8	1	DUST COVER & TETHER	POLYESTER	BLACK
7	1	PANEL GASKET	NEOPRENE	BLACK
6	1	PANEL LOCKNUT	STEEL	ZINC PLATED
5	1	PCB ASSEMBLY	PURCHASED ASSY.	VENDOR SPEC.
4	1	RECEPTACLE MOLDED	POLYESTER	BLACK
3	1	CABLE, CAT 5E, 24 AWG	PVC JACKET	GRAY
2	1	SLIDING SLEEVE	POLYOLEFIN	BLACK
1	1	RJ-45 PLUG SHIELDED	PURCHASED ASSY.	VENDOR SPEC.

REV	DESCRIPTION	DATE
1	REV TO LATEST MFG STD.	2016/04/08
2	EC. NO: ICG2016-1366	2016/05/04
3	DRW: R. STONE	2016/05/04
4	CHK: CHAZELLEWSKI	2016/05/31
5	APP: BREWSTER	2016/05/31

QUALITY SYMBOLS	GENERAL TOLERANCES (UNLESS SPECIFIED)		DIMENSION STYLE IN/MM	SCALE	DESIGN UNITS INCH	THIRD ANGLE PROJECTION
	mm	INCH				
▽=0 ▽=0	4 PLACES	±.005	±.005	DRAWN BY R. STONE	DATE 2003/11/26	TITLE DBL. ENDED FEMALE RJ-45 BULKHEAD, 8/C, CAT 5E MALE PLUG, SLIDING SLEEVE  MOLEX INCORPORATED
	3 PLACES	±.005	±.005			
	2 PLACES	±.005	±.01	APPROVED BY P. WALTZ	DATE 2003/12/29	
	1 PLACE	±.025	±.005	MATERIAL NO. SEE CHART	DOCUMENT NO. SD-84700-004	
DRAFT WHERE APPLICABLE MUST REMAIN WITHIN DIMENSIONS			SIZE B		SHEET NO. 1 OF 1	
THIS DRAWING CONTAINS INFORMATION THAT IS PROPRIETARY TO MOLEX INCORPORATED AND SHOULD NOT BE USED WITHOUT WRITTEN PERMISSION						

15\_Frame\_B IP\_ME\_T Rev. D 2004/04/02