

Excellent Integrated System Limited

Stocking Distributor

Click to view price, real time Inventory, Delivery & Lifecycle Information:

[Molex Connector Corporation](#)
[43061-0006](#)

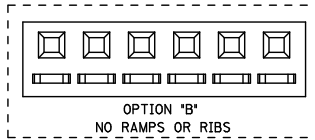
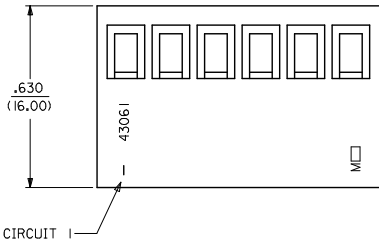
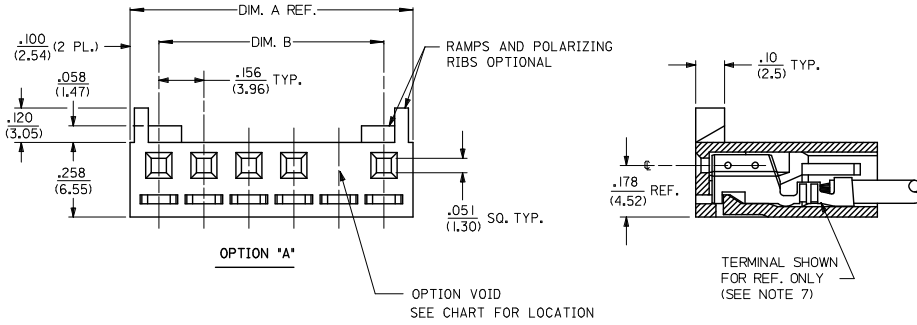
For any questions, you can email us directly:

sales@integrated-circuit.com

NO. OF CKTS.	DIM. A	DIM. B
2	.357 (9.06)	.156 (3.96)
3	.513 (13.02)	.312 (7.92)
4	.669 (16.98)	.468 (11.88)
5	.824 (20.94)	.624 (15.84)
6	.980 (24.90)	.780 (19.80)
7	1.136 (28.86)	.935 (23.76)
8	1.292 (32.82)	1.091 (27.72)
9	1.448 (36.78)	1.247 (31.68)
10	1.604 (40.74)	1.403 (35.64)
11	1.760 (44.70)	1.560 (39.60)
12	1.916 (48.66)	1.715 (43.56)

NOTES:

- MATERIAL: GLASS FILLED POLYESTER, 94V-0
MATERIAL NUMBERS 43061-0*** : COLOR - NATURAL
MATERIAL NUMBERS 43061-1*** : COLOR - BLACK
- FINISH: SEE TERMINAL DWGS.
- FOR ADDITIONAL HOUSING INFORMATION REFER TO DWG. NO. 5195 OR P.S. 5195.
FOR ADDITIONAL TERMINAL INFORMATION REFER TO DWG. NO. 5194 OR 5225, OR P.S. 5194 OR 5225.
- PACKAGING SPECIFICATION: PK-43061-001
- MATES WITH .156/(3.96) CENTER HEADERS AND .045/(1.14) SQUARE PINS.
- CONNECTOR IS DESIGNED FOR USE WITH 18-28 AWG WIRE.
- HOUSING IS DESIGNED FOR USE WITH 5194 (18-22 AWG) AND 5225 (24-28 AWG) TERMINALS.
- THIS PART CONFORMS TO CLASS B REQUIREMENTS OF COSMETIC SPECIFICATION PS-45499-002.



ADD 43061-0040 EC NO: UCP2015-2764 DRAWN BY: 2013/01/08 CHKD BY: 2013/01/08 APPROVED BY: 2013/05/27	QUALITY SYMBOLS □=0 □=0 □=0	GENERAL TOLERANCES (UNLESS SPECIFIED)		DIMENSION STYLE		SCALE	DESIGN UNITS	THIRD ANGLE PROJECTION SPOX .156/(3.96) RECEPTACLE HOUSING molex MATERIAL NO. SEE CHART DOCUMENT NO. SD-43061	SHEET NO. 1 OF 2
				IN/MM		4:1	INCH		
		4 PLACES ±---	±---	DRAWN BY	DATE	TITLE			
		3 PLACES ±---	±.010	ROBERTS	1991/10/17				
2 PLACES ±0.25	±.014	CHECKED BY	DATE						
1 PLACE ±0.35	±---	PATEL	1991/10/17						
0 PLACE ±	±	APPROVED BY	DATE						
		LENZ	1991/10/17						
ANGULAR ±1/2°		MATERIAL NO.		DOCUMENT NO.					
DRAFT WHERE APPLICABLE MUST REMAIN WITHIN DIMENSIONS		SEE CHART		SD-43061					
		SIZE C		THIS DRAWING CONTAINS INFORMATION THAT IS PROPRIETARY TO MOLEX INCORPORATED AND SHOULD NOT BE USED WITHOUT WRITTEN PERMISSION					



Distributor of Molex Connector Corporation: Excellent Integrated System Limited

Datasheet of 43061-0006 - CONN HOUSING 6POS .156 TIN

Contact us: sales@integrated-circuit.com Website: www.integrated-circuit.com

HOUSING OPTION: A			HOUSING OPTION: A			HOUSING OPTION: B			HOUSING OPTION: B		
COLOR WHITE			COLOR BLACK			COLOR WHITE			COLOR BLACK		
NO OF CKTS	MATERIAL NO	VOID LOC	NO OF CKTS	MATERIAL NO	VOID LOC	NO OF CKTS	MATERIAL NO	VOID LOC	NO OF CKTS	MATERIAL NO	VOID LOC
2	43061-0002		2	43061-1002		2	43061-0013		2	43061-1013	
3	43061-0003		3	43061-1003		3	43061-0014		3	43061-1014	
4	43061-0004		4	43061-1004		4	43061-0015		4	43061-1015	
5	43061-0005		5	43061-1005		5	43061-0016		5	43061-1016	
6	43061-0006		6	43061-1006		6	43061-0017		6	43061-1017	
7	43061-0007		7	43061-1007		7	43061-0018		7	43061-1018	
8	43061-0008		8	43061-1008		8	43061-0019		8	43061-1019	
9	43061-0009		9	43061-1009		9	43061-0020		9	43061-1020	
10	43061-0010		10	43061-1010		10	43061-0021		10	43061-1021	
11	43061-0011		11	43061-1011		11	43061-0022		11	43061-1022	
12	43061-0012		12	43061-1012		12	43061-0023		12	43061-1023	
5	43061-0030	3	5	43061-1030	3						
7	43061-0031	4	7	43061-1031	4						
9	43061-0032	5	9	43061-1032	5						
8	43061-0033	7	8	43061-1033	7						
9	43061-0034	7	9	43061-1034	7						
5	43061-0035	4	5	43061-1035	4						
8	43061-0036	2									
7	43061-0037	2, 5, 6									
7	43061-0038	1, 3, 5									
7	43061-0039	3, 5, 7									
7	43061-0040	3, 6									

SEE SHEET 1 EC NO: UCP2013-2764 DRAWN BY: DRWINKIPPER CHECKED BY: CHKONGQUEN APPROVED BY: APPRCSMITH DATE: 2013/01/08 DATE: 2013/01/08 DATE: 2013/05/21	QUALITY SYMBOLS ∇=0 ∇=0 ∇=0	GENERAL TOLERANCES (UNLESS SPECIFIED) mm INCH		DIMENSION STYLE IN/MM		SCALE 4:1	DESIGN UNITS INCH	THIRD ANGLE PROJECTION	
		4 PLACES ± --- ± ---	3 PLACES ± --- ± ---	2 PLACES ± --- ± ---	1 PLACE ± --- ± ---	0 PLACE ± --- ± ---	DRAWN BY: ROBERTS CHECKED BY: PATEL APPROVED BY: LENZ	DATE: 1991/11/06 DATE: 1991/11/06 DATE: 1991/11/06	TITLE SPOX .156/(3,96) RECEPTACLE HOUSING
		ANGULAR ±1/2° DRAFT WHERE APPLICABLE MUST REMAIN WITHIN DIMENSIONS		SEE CHART		MATERIAL NO. SD-43061	DOCUMENT NO.	SHEET NO. 2 OF 2	
		THIS DRAWING CONTAINS INFORMATION THAT IS PROPRIETARY TO MOLEX INCORPORATED AND SHOULD NOT BE USED WITHOUT WRITTEN PERMISSION							