

Excellent Integrated System Limited

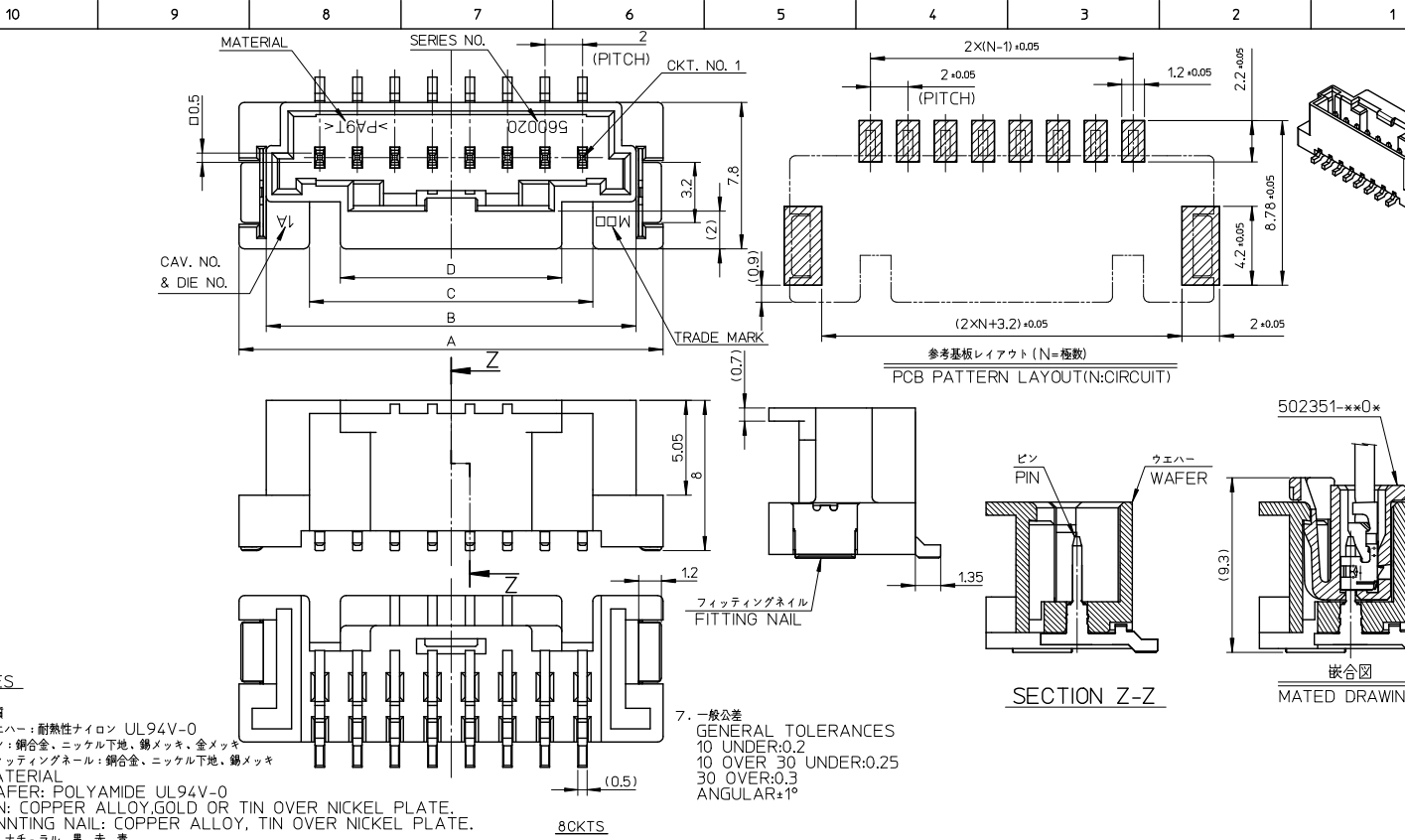
Stocking Distributor

Click to view price, real time Inventory, Delivery & Lifecycle Information:

[Molex Connector Corporation](#)
[5600200200](#)

For any questions, you can email us directly:

sales@integrated-circuit.com

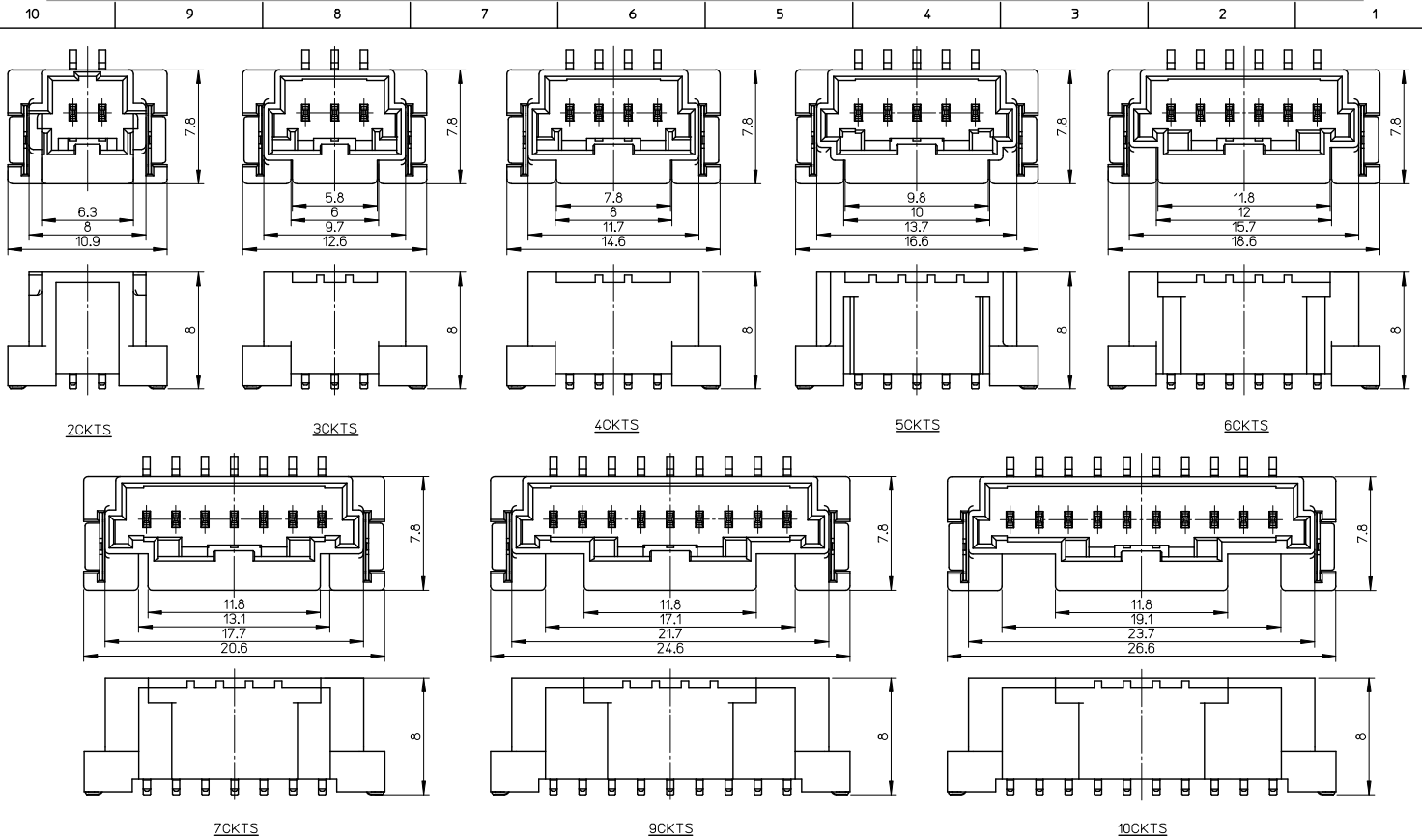


注記
NOTES

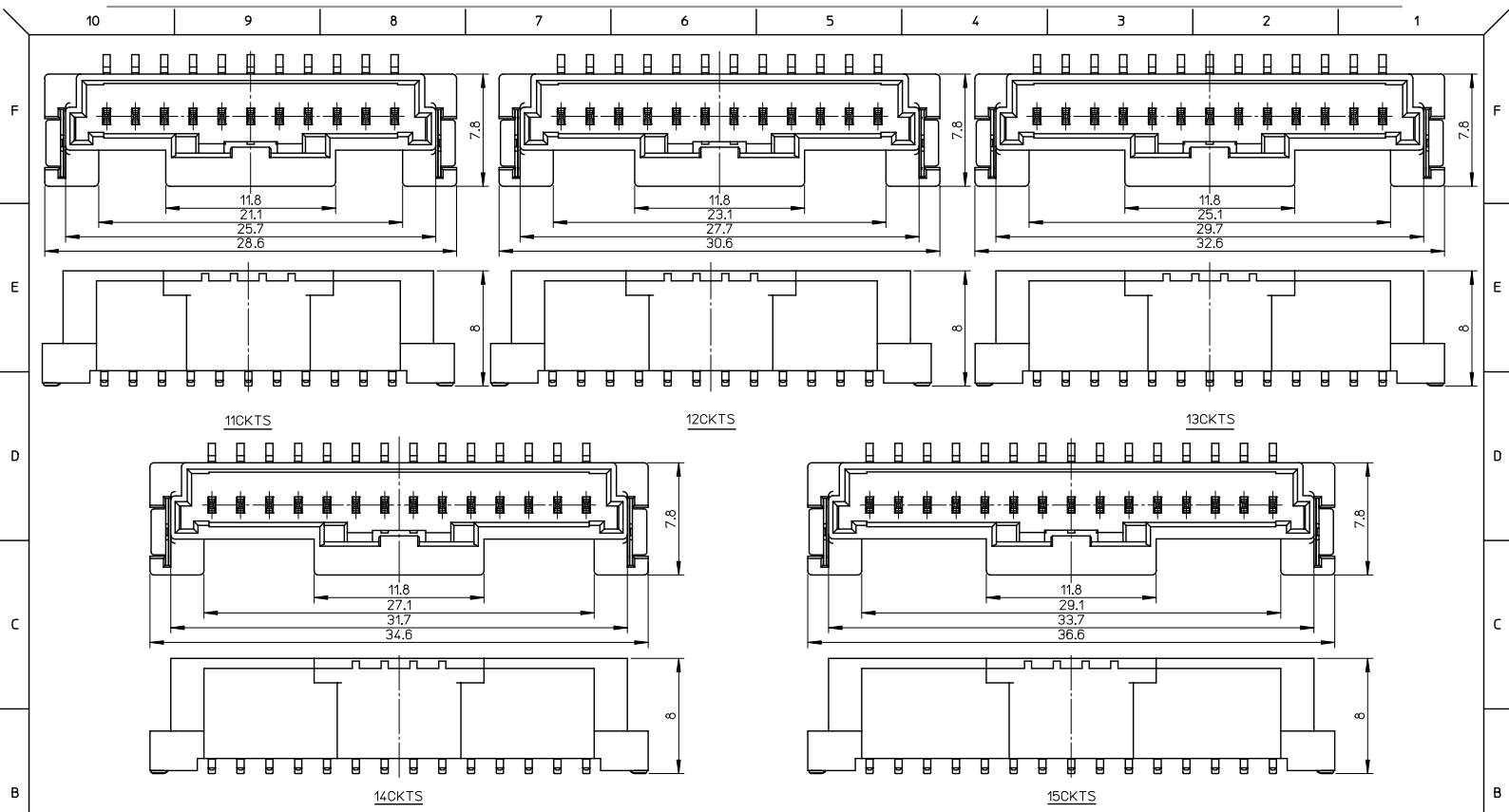
- 材質
ウエハー: 耐熱性ナイロン UL94V-0
ピン: 銅合金、ニッケル下地、錫メッキ、金メッキ
フィッティングネイル: 銅合金、ニッケル下地、錫メッキ
MATERIAL
WAFFER: POLYAMIDE UL94V-0
PIN: COPPER ALLOY, GOLD OR TIN OVER NICKEL PLATE.
FITTING NAIL: COPPER ALLOY, TIN OVER NICKEL PLATE.
- 色: ナチュラル、黒、赤、青
COLOR: NATURAL, BLACK, RED, BLUE
- 嵌合相手:
ハウジング: 502351-xx*0*
錫メッキ端子: 50212-8*00, 50372-8*00, 560085-0101
金メッキ端子: 56161-8*81
MATES WITH
HOUSING: 502351-xx*0*
SN PLATING TERMINAL: 50212-8*00, 50372-8*00, 560085-0101
AU PLATING TERMINAL: 56161-8*81
- エッジ部寸法の詳細はSD-560020-002参照
DETAILED TAPING PACKAGE, SEE SD-560020-002
- ELV及びRoHS適合
ELV AND RoHS COMPLIANT
- 半田付け面のコプラナリティ: 0.1mm MAX.
CO-PLANARITY OF SOLDER TAILS TO BE 0.1mm MAX.

7. 一般公差
GENERAL TOLERANCES
10 UNDER: 0.2
10 OVER: 30 UNDER: 0.25
30 OVER: 0.3
ANGULAR: ±1°

REVISED REV. NO. JTR2016-0015 REV. DATE 2016/03/01 G GIDRANKANGAL02 2016/03/04 CHKCHKOMATSU 2016/03/04 APPR: HAYASHIMOTO 2016/03/08	QUALITY SYMBOLS ▽=0 △=0 ◇=0	GENERAL TOLERANCES (UNLESS SPECIFIED)		DIMENSION STYLE MM ONLY		SCALE 5:1	DESIGN UNITS METRIC	THIRD ANGLE PROJECTION	
		4 PLACES ±	3 PLACES ±	2 PLACES ±	1 PLACE ±	0 PLACE ±	DRAWN BY SHSHIBATA	DATE 2009/02/18	TITLE 2.0MM PITCH W/B CONN. WAFFER ASSY ST. SMT
		ANGULAR ± °		DRAFT WHERE APPLICABLE MUST REMAIN WITHIN DIMENSIONS		APPROVED BY AKANESHIGE		DATE 2009/02/18	DOCUMENT NO. SD-560020-001
		SEE CHART		THIS DRAWING CONTAINS INFORMATION THAT IS PROPRIETARY TO MOLEX INCORPORATED AND SHOULD NOT BE USED WITHOUT WRITTEN PERMISSION		MATERIAL NO.		SHEET NO. 1 OF 4	



REVISED EC NO: JTR2016-0015 DRAWN BY: GIDRINKAGAI02 2016/03/01 CHECKED BY: CHYCHKOMATSU 2016/03/04 APPROVED BY: APPR:YAMANO10 2016/03/08	QUALITY SYMBOLS □=0 △=0 ○=0	GENERAL TOLERANCES (UNLESS SPECIFIED)		DIMENSION STYLE MM ONLY	SCALE 4:1	DESIGN UNITS METRIC	THIRD ANGLE PROJECTION
		4 PLACES ± --- ± --- 3 PLACES ± --- ± --- 2 PLACES ± --- ± --- 1 PLACE ± --- ± --- 0 PLACE ± --- ± ---	mm INCH	DRAWN BY DATE SHSHIBATA 2009/02/18	TITLE 2.0MM PITCH W/B CONN. WAFER ASSY ST, SMT		
		ANGULAR ± - °		CHECKED BY DATE HKOMATSU 2009/02/18	molex		
		DRAFT WHERE APPLICABLE MUST REMAIN WITHIN DIMENSIONS		APPROVED BY DATE AKANESHIGE 2009/02/18		MATERIAL NO. SEE CHART	DOCUMENT NO. SD-560020-001



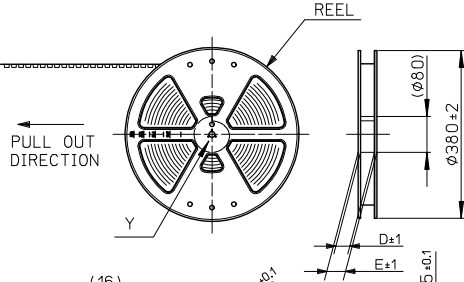
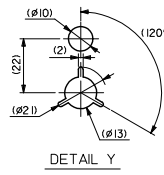
REVISED EC NO. JTR2016-0015 DRW: HANGAI 02 2016/03/04 CHK: HKOMATSU 2016/03/04 APPR: MATAMOTO 2016/03/08	QUALITY SYMBOLS □=0 △=0 ○=0	GENERAL TOLERANCES (UNLESS SPECIFIED) <table border="1"> <thead> <tr> <th></th> <th>mm</th> <th>INCH</th> </tr> </thead> <tbody> <tr> <td>4 PLACES</td> <td>± 0.1</td> <td>± 0.004</td> </tr> <tr> <td>3 PLACES</td> <td>± 0.15</td> <td>± 0.006</td> </tr> <tr> <td>2 PLACES</td> <td>± 0.2</td> <td>± 0.008</td> </tr> <tr> <td>1 PLACE</td> <td>± 0.3</td> <td>± 0.012</td> </tr> <tr> <td>0 PLACE</td> <td>± 0.4</td> <td>± 0.016</td> </tr> </tbody> </table>		mm	INCH	4 PLACES	± 0.1	± 0.004	3 PLACES	± 0.15	± 0.006	2 PLACES	± 0.2	± 0.008	1 PLACE	± 0.3	± 0.012	0 PLACE	± 0.4	± 0.016	DIMENSION STYLE MM ONLY	SCALE 4:1	DESIGN UNITS METRIC	THIRD ANGLE PROJECTION
				mm	INCH																			
4 PLACES	± 0.1	± 0.004																						
3 PLACES	± 0.15	± 0.006																						
2 PLACES	± 0.2	± 0.008																						
1 PLACE	± 0.3	± 0.012																						
0 PLACE	± 0.4	± 0.016																						
REV DESCRIPTION	ANGULAR ± ° DRAFT WHERE APPLICABLE MUST REMAIN WITHIN DIMENSIONS	DRAWN BY DATE SHSHIBATA 2009/02/18 CHECKED BY DATE HKOMATSU 2009/02/18 APPROVED BY DATE AKANESHIGE 2009/02/18 MATERIAL NO. SEE CHART	TITLE 2.0MM PITCH W/B CONN. WAFER ASSY ST. SMT molex	DOCUMENT NO. SD-560020-001	SHEET NO. 3 OF 4	THIS DRAWING CONTAINS INFORMATION THAT IS PROPRIETARY TO MOLEX INCORPORATED AND SHOULD NOT BE USED WITHOUT WRITTEN PERMISSION																		

	10	9	8	7	6	5	4	3	2	1				
F	Sn NATURAL	11.8	29.1	33.7	36.6	560020-1520	15	Au NATURAL	11.8	29.1	33.7	36.6	560020-1530	15
		11.8	27.1	31.7	34.6	560020-1420	14		11.8	27.1	31.7	34.6	560020-1430	14
		11.8	25.1	29.7	32.6	560020-1320	13		11.8	25.1	29.7	32.6	560020-1330	13
		11.8	23.1	27.7	30.6	560020-1220	12		11.8	23.1	27.7	30.6	560020-1230	12
		11.8	21.1	25.7	28.6	560020-1120	11		11.8	21.1	25.7	28.6	560020-1130	11
		11.8	19.1	23.7	26.6	560020-1020	10		11.8	19.1	23.7	26.6	560020-1030	10
		11.8	17.1	21.7	24.6	560020-0920	9		11.8	17.1	21.7	24.6	560020-0930	9
		11.8	15.1	19.7	22.6	560020-0800/-0820	8		11.8	15.1	19.7	22.6	560020-0830	8
		11.8	13.1	17.7	20.6	560020-0700/-0720	7		11.8	13.1	17.7	20.6	560020-0730	7
		11.8	12	15.7	18.6	560020-0600/-0620	6		11.8	12	15.7	18.6	560020-0630	6
E	PLATING	9.8	10	13.7	16.6	560020-0500/-0520	5	PLATING	9.8	10	13.7	16.6	560020-0530	5
		7.8	8	11.7	14.6	560020-0400/-0420	4		7.8	8	11.7	14.6	560020-0430	4
		5.8	6	9.7	12.6	560020-0300/-0320	3		5.8	6	9.7	12.6	560020-0330	3
		6.3	8.0	10.9	560020-0200/-0220	2	6.3		8.0	10.9	560020-0230	2		
		EMBOSSED PACKAGE ORDER NO.					CKTS		EMBOSSED PACKAGE ORDER NO.					CKTS
CONNECTOR SERIES NO. 560020-**08						CONNECTOR SERIES NO. 560020-**18								

	10	9	8	7	6	5	4	3	2	1		
D	Sn BLACK	/	/	/	/	/	/	/	/	/		
		/	/	/	/	/	/	/	/	/		
		/	/	/	/	/	/	/	/	/		
		/	/	/	/	/	/	/	/	/		
		/	/	/	/	/	/	/	/	/		
		/	/	/	/	/	/	/	/	/		
		/	/	/	/	/	/	/	/	/		
		11.8	15.1	19.7	22.6	560020-0821	8	Sn RED	/	/	/	
		11.8	12	15.7	18.6	560020-0621	6		/	/	/	
		7.8	8	11.7	14.6	560020-0421	4		/	/	/	
5.8	6	9.7	12.6	560020-0321	3	/	/		/			
6.3	8.0	10.9	560020-0221	2	/	/	/					
EMBOSSED PACKAGE ORDER NO.					CKTS	Sn BLUE	/		/	/		
CONNECTOR SERIES NO. 560020-**28							/		/	/		
/	/	/	/	/	/		/		/	/		
/	/	/	/	/	/		/		/	/		
/	/	/	/	/	/		/		/	/		
/	/	/	/	/	/		/	/	/			
/	/	/	/	/	/		/	/	/			
11.8	15.1	19.7	22.6	560020-0822	8		11.8	15.1	19.7	22.6	560020-0823	8
11.8	12	15.7	18.6	560020-0622	6		11.8	12	15.7	18.6	560020-0623	6
7.8	8	11.7	14.6	560020-0422	4		7.8	8	11.7	14.6	560020-0423	4
5.8	6	9.7	12.6	560020-0322	3	5.8	6	9.7	12.6	560020-0323	3	
6.3	8.0	10.9	560020-0222	2	6.3	8.0	10.9	560020-0223	2			
EMBOSSED PACKAGE ORDER NO.					CKTS	EMBOSSED PACKAGE ORDER NO.					CKTS	
CONNECTOR SERIES NO. 560020-**48						CONNECTOR SERIES NO. 560020-**68						

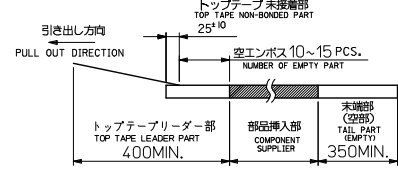
REVISED EC NO. JTR2016-0015 DRAWN BY: IDRWANANGA107 2016/03/04 CHECKED BY: CHYKHKOMATSU 2016/03/04 APPR: HAYAMOTO 2016/03/08	QUALITY SYMBOLS $\nabla = 0$ $\nabla = 0$ $\nabla = 0$	GENERAL TOLERANCES (UNLESS SPECIFIED) <table border="1"> <tr> <th></th> <th>mm</th> <th>INCH</th> </tr> <tr> <td>4 PLACES</td> <td>±---</td> <td>±---</td> </tr> <tr> <td>3 PLACES</td> <td>±---</td> <td>±---</td> </tr> <tr> <td>2 PLACES</td> <td>±---</td> <td>±---</td> </tr> <tr> <td>1 PLACE</td> <td>±---</td> <td>±---</td> </tr> <tr> <td>0 PLACE</td> <td>±---</td> <td>±---</td> </tr> </table>		mm	INCH	4 PLACES	±---	±---	3 PLACES	±---	±---	2 PLACES	±---	±---	1 PLACE	±---	±---	0 PLACE	±---	±---	DIMENSION STYLE MM ONLY	SCALE 5:1	DESIGN UNITS METRIC	THIRD ANGLE PROJECTION	TITLE 2.0MM PITCH W/B CONN. WAFER ASSY ST. SMT	DOCUMENT NO. SD-560020-001	SHEET NO. 4 OF 4
				mm	INCH																						
			4 PLACES	±---	±---																						
			3 PLACES	±---	±---																						
2 PLACES	±---	±---																									
1 PLACE	±---	±---																									
0 PLACE	±---	±---																									
DRAWN BY SHSHIBATA	DATE 2009/02/18																										
CHECKED BY HKOMATSU	DATE 2009/02/18																										
APPROVED BY AKANESHIGE	DATE 2009/02/18																										
REVISION G		ANGULAR ± - °		SEE CHART		THIS DRAWING CONTAINS INFORMATION THAT IS PROPRIETARY TO MOLEX INCORPORATED AND SHOULD NOT BE USED WITHOUT WRITTEN PERMISSION																					

10 9 8 7 6 5 4 3 2 1

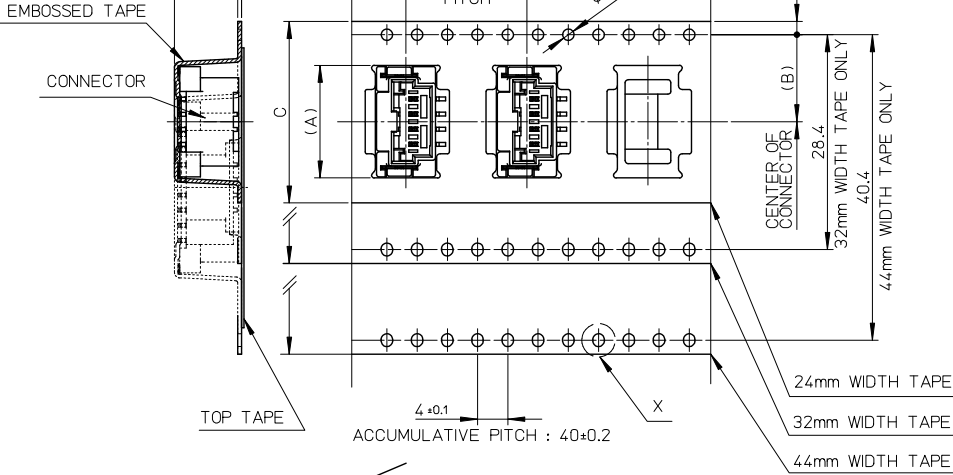


NOTES

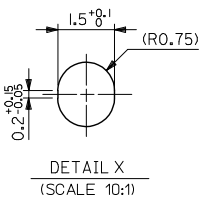
- 製品番号: 560020-***0 詳細寸法については、製品単体図面を参照ください。
PART NO. 560020-***0 SEE SALES DRAWING FOR CONNECTOR
- 梱包数量: 650個/REEL
NUMBER OF CONNECTORS 650 PCS/REEL
- リードテープ長さ
LEAD TAPE LENGTH



4. 材料
MATERIAL
キャリアテープ: ポリスチレン
CARRIER TAPE: POLYSTYRENE
トップテープ: PET, PE, PEF
TOP TAPE
リール: ポリスチレン
REEL: POLYSTYRENE



49.4	45.4	44	20.2	22.9	560020-0800	08
				20.9	560020-0700	07
37.4	33.4	32	14.2	18.9	560020-0600	06
				16.9	560020-0500	05
				14.9	560020-0400	04
29.4	25.4	24	11.5	12.9	560020-0300	03
				11.2	560020-0200	02



PULL OUT DIRECTION
DIRECTION OF CONNECTOR IN EMBOSSSED TAPE

REVISED EC NO. JTR2014-0066 DRAWN: YAMAKI 2014/01/15 CHKD: HKOMATSU 2014/01/15 APPR: MAYAMAMOTO 2014/02/24	GENERAL TOLERANCES (UNLESS SPECIFIED)		DIMENSION STYLE MM ONLY		SCALE 2:1	DESIGN UNITS METRIC	THIRD ANGLE PROJECTION
	10 UNDER	± 0.2	DRAWN BY YAMAKI	DATE 2012/02/29	TITLE 2.0MM PITCH W/B ST. WAFER ASSY EMBOSSSED TAPE PACKAGE molex DOCUMENT NO. SD-560020-002 SHEET NO. 1 OF 1		
	10 OVER 30 UNDER	± 0.25	CHECKED BY HKOMATSU	DATE 2012/02/29			
	30 OVER	± 0.3	APPROVED BY MAYAMAMOTO	DATE 2012/03/01			
ANGULAR ±1 °		MATERIAL NO. SEE CHART					
DRAFT WHERE APPLICABLE MUST REMAIN WITHIN DIMENSIONS		THIS DRAWING CONTAINS INFORMATION THAT IS PROPRIETARY TO MOLEX INCORPORATED AND SHOULD NOT BE USED WITHOUT WRITTEN PERMISSION					

9 8 7 6 5 4 3 2 1