

## Excellent Integrated System Limited

Stocking Distributor

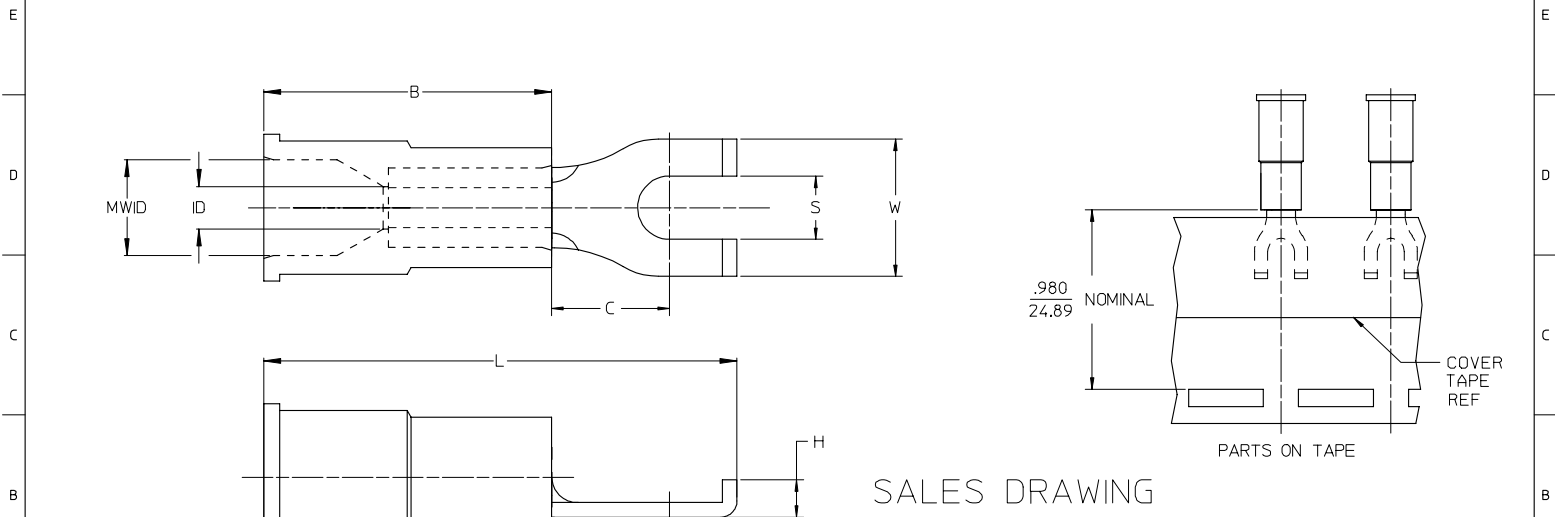
Click to view price, real time Inventory, Delivery & Lifecycle Information:

[Molex Connector Corporation](#)  
[0191190029](#)

For any questions, you can email us directly:

[sales@integrated-circuit.com](mailto:sales@integrated-circuit.com)

| LOOSE PIECE     |                    | TAPE MOUNTED    |                    | DIMENSIONS |           |          |          |           |           |            |            |         | FINISH           |
|-----------------|--------------------|-----------------|--------------------|------------|-----------|----------|----------|-----------|-----------|------------|------------|---------|------------------|
| MATERIAL NUMBER | ENGINEERING NUMBER | MATERIAL NUMBER | ENGINEERING NUMBER | STUD SIZE  | S ±.005   | W MAX    | C MIN    | ID MIN    | MWID      | B REF      | L MAX      | H REF   | INSULATION COLOR |
| 191190004       | A-215-06X          | 191190005       | A-215-06XT         | 6          | .146/3.71 | .301/7.6 | .207/5.3 | .054/1.37 | .145/3.68 | .450/11.43 | .836/21.23 | .08/2.0 | RED              |
| 191190007       | A-215-08X          | 191190008       | A-215-08XT         | 8          | .173/4.39 | .301/7.6 | .207/5.3 | .054/1.37 | .145/3.68 | .450/11.43 | .836/21.23 | .08/2.0 | RED              |
| 191190010       | A-215-10X          | 191190051       | A-215-10XT         | 10         | .198/5.03 | .301/7.6 | .207/5.3 | .054/1.37 | .145/3.68 | .450/11.43 | .836/21.23 | .08/2.0 | RED              |
| 191190080       | B-216-06X          | 191190027       | B-216-06XT         | 6          | .146/3.71 | .301/7.6 | .209/5.3 | .081/2.06 | .175/4.45 | .450/11.43 | .850/21.59 | .08/2.0 | BLUE             |
| 191190029       | B-216-08X          | 191190030       | B-216-08XT         | 8          | .173/4.39 | .301/7.6 | .209/5.3 | .081/2.06 | .175/4.45 | .450/11.43 | .850/21.59 | .08/2.0 | BLUE             |
| 191190032       | B-216-10X          | 191190033       | B-216-10XT         | 10         | .198/5.03 | .301/7.6 | .209/5.3 | .081/2.06 | .175/4.45 | .450/11.43 | .850/21.59 | .08/2.0 | BLUE             |



SALES DRAWING

- NOTES:
1. MATERIAL: COPPER .031/.79 THICK
  2. PLATING: ELECTRO-TIN
  3. MWID = MAXIMUM WIRE INSULATION DIAMETER
  4. PART IS RoHS COMPLIANT

|   |  |  |                       |                           |                      |                  |                   |   |   |       |  |
|---|--|--|-----------------------|---------------------------|----------------------|------------------|-------------------|---|---|-------|--|
| STANDARDIZE<br>IEC NO: ETC2008-0012<br>DRAINSTONE 2007/11/24<br>CHYK-JIMANEIL 2007/11/24<br>APPR: JIMANEIL 2007/12/05<br>REV: A | DESCRIPTION<br>QUALITY SYMBOLS<br>▽=0<br>▽=0 | GENERAL TOLERANCES (UNLESS SPECIFIED)                |                       | DIMENSION STYLE IN/MM     |                      | SCALE ---        | DESIGN UNITS INCH | THIRD ANGLE PROJECTION  |   |       |  |
|   |  | 4 PLACES ± --- ± ---                                 | 3 PLACES ± --- ± .005 | 2 PLACES ± 0.13 ± .01     | 1 PLACE ± 0.25 ± --- | mm               | INCH              | DRAWN BY K0   | DATE 1984/10/25   | TITLE |  |
|   |  | ANGULAR ±1/2°  |                       |                           |                      | DRAWN BY K0      |                   | DATE 1984/10/25   | FLANGED SPADE TERMINAL, INSULKRIMP -200 SERIES, LONG BARREL |       |  |
|   |  | DRAFT WHERE APPLICABLE MUST REMAIN WITHIN DIMENSIONS |                       |                           |                      | CHECKED BY GZ    |                   | DATE 1984/11/09   | MOLEX INCORPORATED  |       |  |
|   |  | MATERIAL NO. SEE CHART                               |                       | DOCUMENT NO. SD-19119-003 |                      | SHEET NO. 1 OF 1 |                   | THIS DRAWING CONTAINS INFORMATION THAT IS PROPRIETARY TO MOLEX INCORPORATED AND SHOULD NOT BE USED WITHOUT WRITTEN PERMISSION |   |       |  |