

## Excellent Integrated System Limited

Stocking Distributor

Click to view price, real time Inventory, Delivery & Lifecycle Information:

[Molex Connector Corporation](#)  
[0351640600](#)

For any questions, you can email us directly:

[sales@integrated-circuit.com](mailto:sales@integrated-circuit.com)

10 9 8 7 6 5 4 3 2 1

F

E

D

C

B

A

F

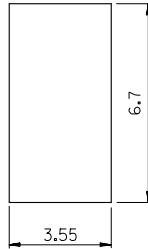
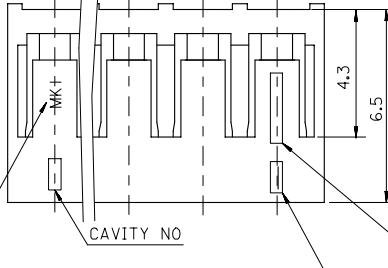
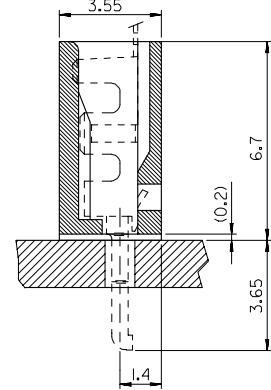
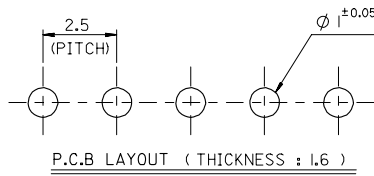
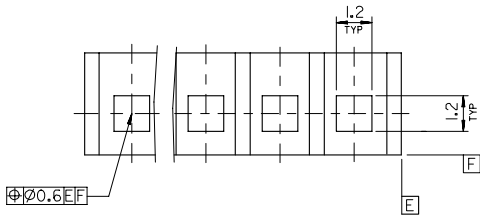
E

D

C

B

A

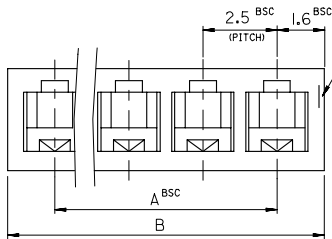


TRADE MARK (MK I)

CAVITY NO

ENG.NO (35164)

CIRCUIT NO. 1



**NOTES**

1. MATERIAL : NYLON66 UL94V-0
2. MATED WITH TERMINAL : 35047-9802

**LEGEND**

- 35164- \*\* 0 \*
- COLOR : 0 --- NATURAL
  - 2 --- RED
  - CKT ( 02 , 03 , 04 ....)

38.2	35	35164 - 150*	15
35.7	32.5	- 140*	14
34.0	30	- 130*	13
30.7	27.5	- 120*	12
28.2	25	- 110*	11
25.7	22.5	- 100*	10
23.2	20	- 090*	9
20.7	17.5	- 080*	8
18.2	15	- 070*	7
15.7	12.5	- 060*	6
13.2	10	- 050*	5
10.7	7.5	- 040*	4
8.2	5.0	- 030*	3
5.7	2.5	35164 - 020*	2
B	A	ENG.NO	CKT

REVISED EC NO: KOR2008-0071 DRAWN: JEONG CHKD: SUK I H APPR: YUN S K I H 2007/10/20 2007/10/31 2007/10/31	QUALITY SYMBOLS ▽=0 ▽=0	GENERAL TOLERANCES (UNLESS SPECIFIED)		DIMENSION STYLE MM ONLY		SCALE 8:1	DESIGN UNITS METRIC	THIRD ANGLE PROJECTION	
		4 PLACES ± --- ± --- 3 PLACES ± --- ± --- 2 PLACES ± --- ± --- 1 PLACE ± 0.3 ± ---	mm INCH	DRAWN BY KSK I H DATE 2001/10/25	TITLE 2.5 PITCH BOARD-IN CONN. HOUSING				
		ANGULAR ± 2 °		CHECKED BY JUNGK I L O H DATE 2001/10/25	MOLEX INCORPORATED				
		DRAFT WHERE APPLICABLE MUST REMAIN WITHIN DIMENSIONS		APPROVED BY CHANGWOOLE DATE 2001/10/25	MATERIAL NO. SEE TABLE	DOCUMENT NO. SD-35164-**-0*	SHEET NO. 1 OF 1		

10 9 8 7 6 5 4 3 2 1