

## Excellent Integrated System Limited

Stocking Distributor

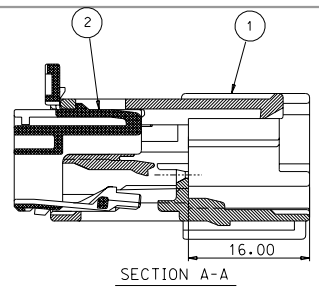
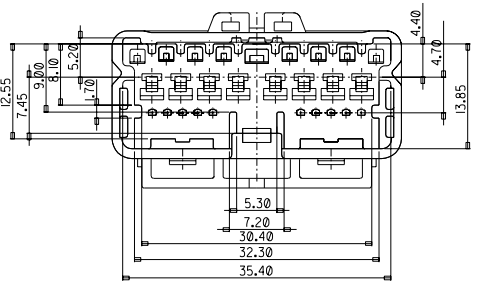
Click to view price, real time Inventory, Delivery & Lifecycle Information:

[Molex Connector Corporation](#)  
[0353761810](#)

For any questions, you can email us directly:

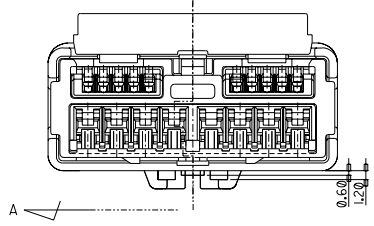
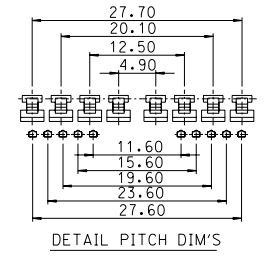
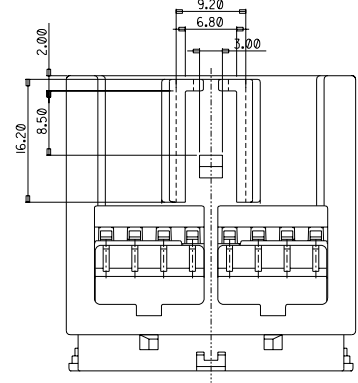
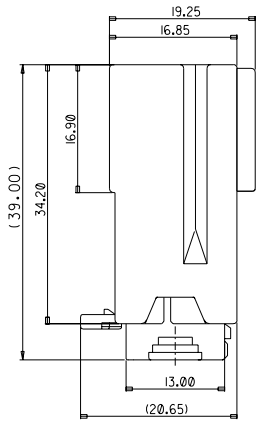
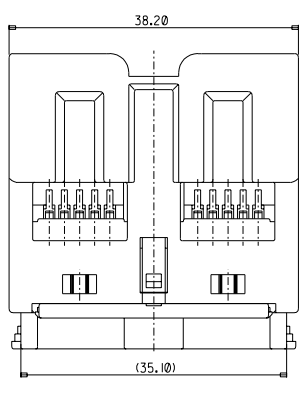
[sales@integrated-circuit.com](mailto:sales@integrated-circuit.com)

DRAWING NO. SD35376-002  
 SIMILAR ITEM EDIF NO.  
 PROJECT NO. C  
 SIMILAR ITEM  
 PROJECT NO.  
 DO NOT SCALE DRAWING DIMENSION IN METRIC



NO	PART NO	PART NAME	MATERIAL	Q'TY
1	35376-1890	DUOMATE HYBRID TYPE 18P MALE CONN. ASS'Y	POLYESTER (PBT)	1
2	35377-1880	DUOMATE HYBRID TYPE 18P MALE TPA	POLYESTER (PBT)	1

NOTES:  
 1. MATING TERMINAL PART NO:  
 DUOMATE(030):35426-9702  
 UNICONN(090)TYPE: 3535420-9702,35420-9802,35420-9902  
 2. MATING CONNECTOR PART NO: 35374-1810  
 3. TERMINAL RETENTION FORCE(COMBINED): 10Kgf MIN.



NEW RELEASE	EC NO. A	DRAWN: Y.SIK/KIM 96/06/19	CHK: APPR:	DESCRIPTION	MAJOR CRITICAL C	GENERAL TOLERANCES: (UNLESS SPECIFIED)		SCALE 2:1	DESIGN/INCH	THIRD ANGLE PROJECTION	DIMENSIONS:		SHT	REV
						mm	INCH	mm	INCH	mm	INCH	mm	INCH	mm
						4 PLACES	±0.1	±	Y.SIK/KIM 96/06/19	GENERAL TOLERANCE	DUOMATE HYBRID TYPE	FRONT VIEW		
						3 PLACES	±0.1	±	B.K.CHOI 96/06/19	CHECKED BY & DATE	18P MALE CONNECTOR ASS'Y	RIGHT VIEW		
						2 PLACES	±0.20	±	C.W.LEE 96/11/18	APPROVED BY & DATE	MOLEX INCORPORATED	TOP VIEW		
						1 PLACE	±0.1	±		REFERENCE	TITL KOREA	ISOMETRIC		
									CAD FILENAME	A MATERIAL NO.	DRAWING NO.			
									353761810	SD35376-002				

DRAFT WHERE APPLICABLE MUST REMAIN WITHIN DIMENSIONS. THIS DRAWING CONTAINS INFORMATION THAT IS PROPRIETARY TO MOLEX INCORPORATED AND SHOULD NOT BE USED WITHOUT WRITTEN PERMISSION.