

Excellent Integrated System Limited

Stocking Distributor

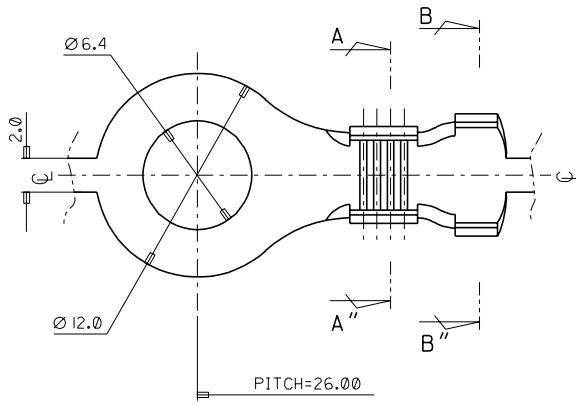
Click to view price, real time Inventory, Delivery & Lifecycle Information:

[Molex Connector Corporation](#)
[0357501910](#)

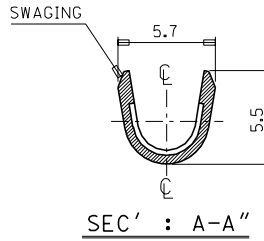
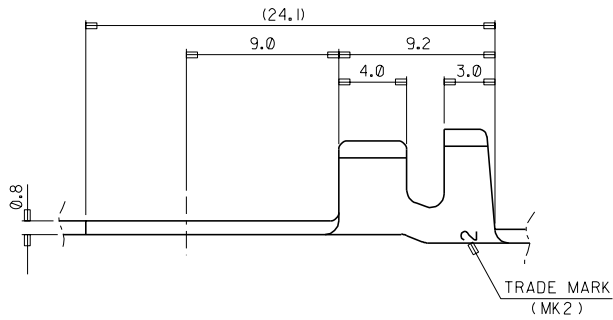
For any questions, you can email us directly:

sales@integrated-circuit.com

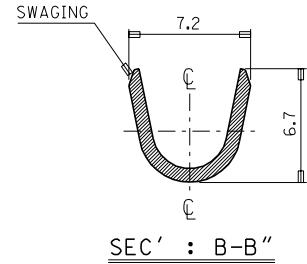
ENG. NO. SD 35750-19*0
EDP NO.
SIMILAR ITEM
PROJECT NO. Ø6.4 RING TM'L
DO NOT SCALE DRAWING
DIMENSION IN METRIC



- NOTES
1. MATERIAL : BRASS . 0.8mm THICKNESS
 2. FINISH : 35750-1900 : UNPLATED
35750-1910 : POST PLATED TIN
35750-1940 : POST PLATED TIN-LEAD
 3. RECOMMENDED LENGTH OF WIRE STRIP IS 5.6-6.2mm.



SEC' : A-A''



SEC' : B-B''

REVISION RECORD		ECN	DATE	DESCRIPTION	ASS'Y PART	QTY/REEL OR PACK	SURFACE AREA	MATERIAL	SEE NOTES	WIRE RANGE	GENERAL TOLERANCES	MOLEX-KOREA CO.,LTD. REVISE ONLY ON CAD SYSTEM
LTR	REVISION RECORD	ECN	DATE	DESCRIPTION	ASS'Y PART	QTY/REEL OR PACK	SURFACE AREA	MATERIAL	SEE NOTES	WIRE RANGE	GENERAL TOLERANCES	
8												
7												
6												
5												
4												
3												
2												
1												

TITLE: Ø6.4 RING TM'L (LA206) 1 of 1
ENG. NO. SD 35750-19*0
REV C