

Excellent Integrated System Limited

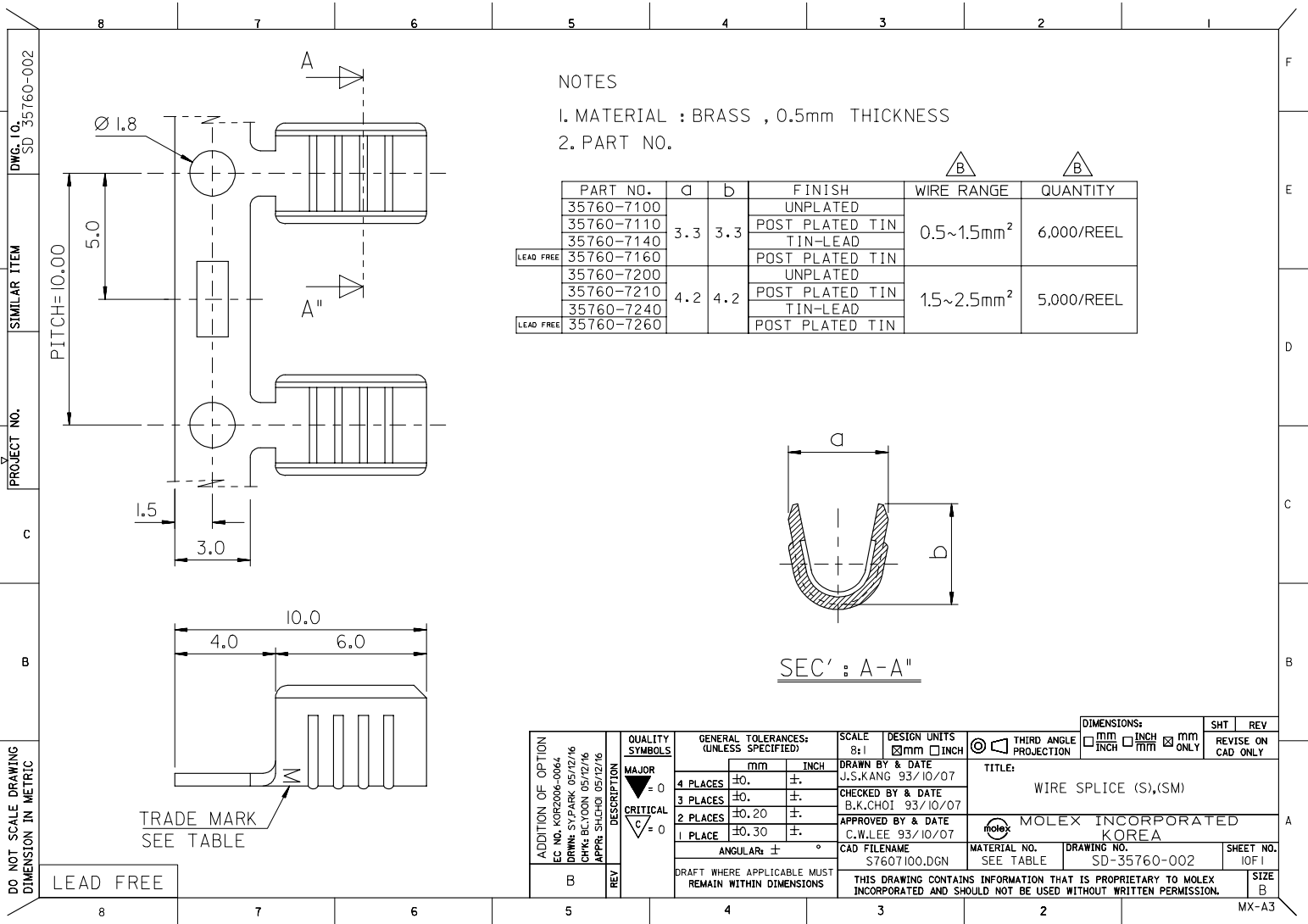
Stocking Distributor

Click to view price, real time Inventory, Delivery & Lifecycle Information:

[Molex Connector Corporation](#)
[0357607100](#)

For any questions, you can email us directly:

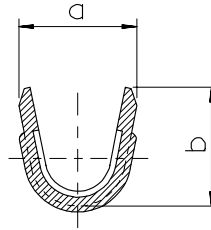
sales@integrated-circuit.com



NOTES

1. MATERIAL : BRASS , 0.5mm THICKNESS
2. PART NO.

PART NO.	a	b	FINISH	WIRE RANGE	QUANTITY
35760-7100	3.3	3.3	UNPLATED	0.5~1.5mm ²	6,000/REEL
35760-7110			POST PLATED TIN		
35760-7140			TIN-LEAD		
LEAD FREE 35760-7160	4.2	4.2	POST PLATED TIN	1.5~2.5mm ²	5,000/REEL
35760-7200			UNPLATED		
35760-7210			POST PLATED TIN		
35760-7240	4.2	4.2	TIN-LEAD	1.5~2.5mm ²	5,000/REEL
LEAD FREE 35760-7260			POST PLATED TIN		



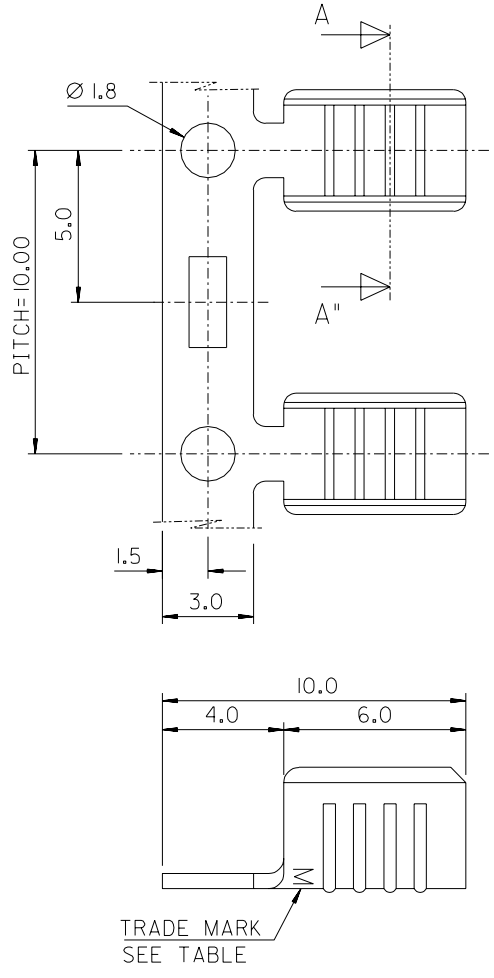
SEC' : A-A''

DO NOT SCALE DRAWING
DIMENSION IN METRIC

LEAD FREE

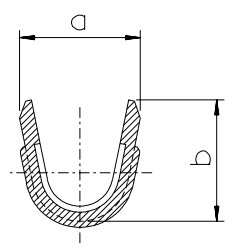
ADDITION OF OPTION EC NO. KOR2006-0064 DRAWN: SY.PARK 05/12/16 CHK'd: B.C.YOON 05/12/16 APPR: S.H.CHOI 05/12/16	QUALITY SYMBOLS MAJOR = 0 CRITICAL = 0	GENERAL TOLERANCES: (UNLESS SPECIFIED)		SCALE 8:1	DESIGN UNITS <input checked="" type="checkbox"/> mm <input type="checkbox"/> INCH	THIRD ANGLE PROJECTION	DIMENSIONS: <input type="checkbox"/> mm <input type="checkbox"/> INCH <input checked="" type="checkbox"/> mm ONLY	SHT REV	
		4 PLACES ±0.1 3 PLACES ±0.2 2 PLACES ±0.3 1 PLACE ±0.5	mm INCH ±0.1 ± ±0.2 ± ±0.3 ±	DRAWN BY & DATE J.S.KANG 93/10/07	CHECKED BY & DATE B.K.CHOI 93/10/07	APPROVED BY & DATE C.W.LEE 93/10/07	TITLE: WIRE SPLICE (S),(SM)		
CAD FILENAME S7607100.DGN	MATERIAL NO. SEE TABLE	DRAWING NO. SD-35760-002	SHEET NO. 1 OF 1	MOLEX INCORPORATED KOREA					SIZE B
DRAFT WHERE APPLICABLE MUST REMAIN WITHIN DIMENSIONS				THIS DRAWING CONTAINS INFORMATION THAT IS PROPRIETARY TO MOLEX INCORPORATED AND SHOULD NOT BE USED WITHOUT WRITTEN PERMISSION.					MX-A3

DWG. NO. SD 35760-7**0
 SIMILAR ITEM
 PROJECT NO.
 c
 B
 DO NOT SCALE DRAWING
 DIMENSION IN METRIC



NOTES
 1. MATERIAL : BRASS , 0.5mm THICKNESS
 2. PART NO.

PART NO.	DIM'S		FINISH	WIRE SIZE	MAT'L THICK'	TRADE MARK
	a	b				
35760-7100	3.3	3.3	UNPLATED	#20-#16	0.5mm	MK2
35760-7110			POST PLATED TIN			
35760-7140			TIN-LEAD			
35760-7200	4.2	4.2	UNPLATED	#16-#12	0.4mm	MK24
35760-7210			POST PLATED TIN			
35760-7240			TIN-LEAD			
35760-7205	4.2	4.2	POST PLATED TIN			



REVISED	EC NO. DRAWN BY: YANG 01/11/15 CHK: APPR:	DESCRIPTION	QUALITY SYMBOLS	GENERAL TOLERANCES (UNLESS SPECIFIED)		SCALE 8:1	DESIGN UNITS <input checked="" type="checkbox"/> mm <input type="checkbox"/> INCH	DIMENSIONS: <input type="checkbox"/> mm <input type="checkbox"/> INCH <input checked="" type="checkbox"/> mm ONLY		SHT	REV
			MAJOR $\nabla = 0$	mm	INCH	DRAWN BY & DATE		THIRD ANGLE PROJECTION		REVISE ON CAD ONLY	
			CRITICAL $\sphericalangle = 0$	±	±	J.S.KANG 93/10/07		TITLE: WIRE SPLICE (S),(SM)			
				4 PLACES ±	3 PLACES ±	CHECKED BY & DATE		MOLEX INCORPORATED KOREA			
		2 PLACES ±0.20 ±	±	±	B.K.CHOI 93/10/07		MATERIAL NO. SEE TABLE		DRAWING NO. SD-35760-7**0	SHEET NO. 1 OF 1	
		1 PLACE ±0.30 ±	±	±	APPROVED BY & DATE		CAD FILENAME S7607100.DGN			SIZE B	
			ANGULAR ± °		C.W.LEE 93/10/07		THIS DRAWING CONTAINS INFORMATION THAT IS PROPRIETARY TO MOLEX INCORPORATED AND SHOULD NOT BE USED WITHOUT WRITTEN PERMISSION.				
	B	REV	DRAFT WHERE APPLICABLE MUST REMAIN WITHIN DIMENSIONS								