

Excellent Integrated System Limited

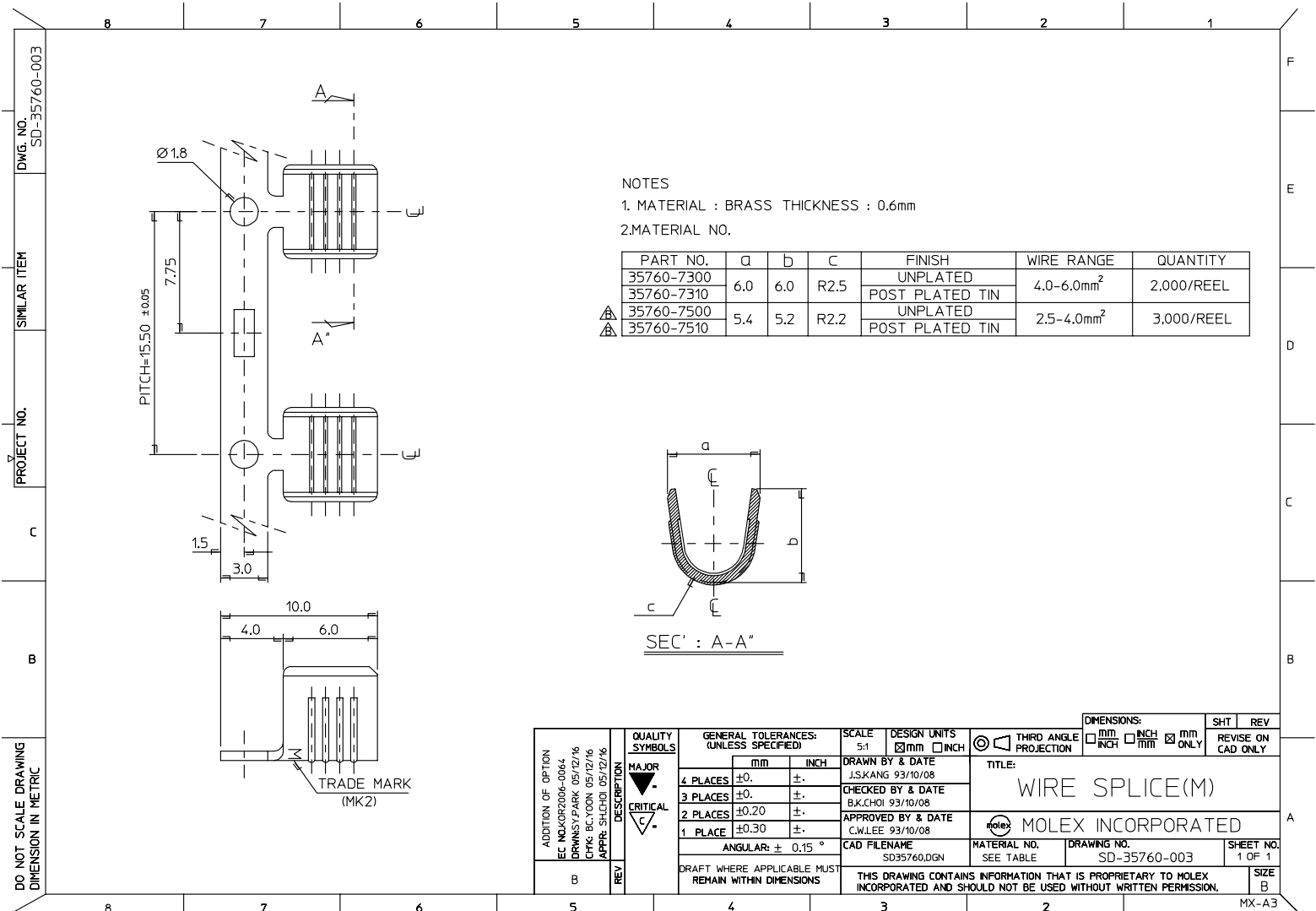
Stocking Distributor

Click to view price, real time Inventory, Delivery & Lifecycle Information:

[Molex Connector Corporation](#)
[0357607310](#)

For any questions, you can email us directly:

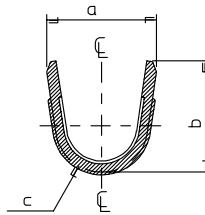
sales@integrated-circuit.com



NOTES

1. MATERIAL : BRASS THICKNESS : 0.6mm
2. MATERIAL NO.

PART NO.	a	b	c	FINISH	WIRE RANGE	QUANTITY
35760-7300	6.0	6.0	R2.5	UNPLATED	4.0-6.0mm ²	2,000/REEL
35760-7310				POST PLATED TIN		
35760-7500	5.4	5.2	R2.2	UNPLATED	2.5-4.0mm ²	3,000/REEL
35760-7510				POST PLATED TIN		



SEC' : A-A*

DO NOT SCALE DRAWING
DIMENSION IN METRIC

ADDITION OF OPTION EC INDUSTRY 05/12/16 DEWANSY PARK 05/12/16 CHKS. BC YUON 05/12/16 APPR. SHI CHOI 05/12/16	QUALITY SYMBOLS MAJOR CRITICAL	GENERAL TOLERANCES: (UNLESS SPECIFIED)		SCALE 5:1	DESIGN UNITS <input checked="" type="checkbox"/> mm <input type="checkbox"/> INCH	<input type="checkbox"/> THRD ANGLE <input type="checkbox"/> PROJECTION	DIMENSIONS: <input type="checkbox"/> mm <input type="checkbox"/> INCH <input checked="" type="checkbox"/> mm ONLY	SHT REV
		4 PLACES ±0. ±. 3 PLACES ±0. ±. 2 PLACES ±0.20 ±. 1 PLACE ±0.30 ±. ANGULAR: ± 0.15 °	DRAWN BY & DATE J.S.KANG 93/10/08 CHECKED BY & DATE B.K.CHOI 93/10/08 APPROVED BY & DATE C.W.LEE 93/10/08	TITLE: WIRE SPLICE(M)		MOLEX INCORPORATED		MATERIAL NO. SEE TABLE
B	REV	DRAFT WHERE APPLICABLE MUST REMAIN WITHIN DIMENSIONS		THIS DRAWING CONTAINS INFORMATION THAT IS PROPRIETARY TO MOLEX INCORPORATED AND SHOULD NOT BE USED WITHOUT WRITTEN PERMISSION.				SIZE B