



Distributor of Molex Connector Corporation: Excellent Integrated System Limited
Datasheet of 0382210004 - Connector Barrier Block Strip 4 Circuit 0.563" (14.30mm)

Contact us: sales@integrated-circuit.com Website: www.integrated-circuit.com

Excellent Integrated System Limited

Stocking Distributor

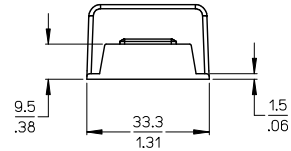
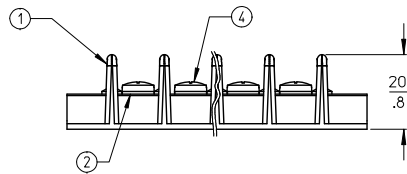
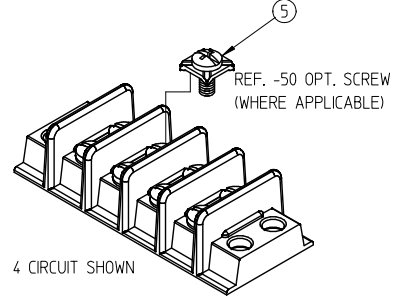
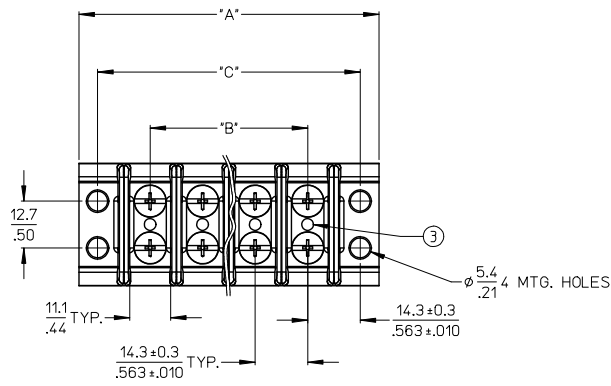
Click to view price, real time Inventory, Delivery & Lifecycle Information:

[Molex Connector Corporation](#)
[0382210004](#)

For any questions, you can email us directly:

sales@integrated-circuit.com

10	9		8		7	6	5	4	3	2	38221
MATERIAL NO. STD OPT	MATERIAL NO. -50 OPT	NO. OF CIRCUITS	DIM. "A"		DIM. "B"		DIM. "C"				
			mm	in	mm	in	mm	in			
382210002	382210302	02	53.1	2.09	14.3	.56	42.8	1.69			
382210003	382210303	03	67.5	2.66	28.6	1.13	57.1	2.25			
382210004	382210304	04	81.7	3.22	42.8	1.69	71.4	2.81			
382210005	382210305	05	96.0	3.78	57.1	2.25	85.7	3.38			
382210006	382210306	06	110.2	4.34	71.4	2.81	100.0	3.94			
382210007	382210307	07	124.6	4.91	85.7	3.38	114.3	4.50			
382210008	382210308	08	138.9	5.47	100.0	3.94	128.5	5.06			
382210009	382210309	09	153.2	6.03	114.3	4.50	142.7	5.62			
382210010	382210310	10	167.4	6.59	128.5	5.06	157.1	6.19			
382210011	382210311	11	181.8	7.16	142.7	5.62	171.4	6.75			
382210012	382210312	12	196.0	7.72	157.1	6.19	185.7	7.31			
382210013	382210313	13	210.3	8.28	171.4	6.75	200.0	7.88			
382210014	382210314	14	224.5	8.84	185.7	7.31	214.3	8.44			
382210015	382210315	15	239.0	9.41	200.0	7.88	228.6	9.00			



- NOTES:
 1. MATERIAL: SEE TABLE
 2. FINISHES: SEE TABLE
 3. "XX" REFERS TO THE NUMBER OF CIRCUITS
 4. ROHS COMPLIANT

ITEM	QTY.	DESCRIPTION	MATERIAL	FINISH
5	"XX" #2	SCREW, #8-32, PAN HD., PHIL-SLOT, W/WASHER (-50 OPT)	STEEL	ZN, CLEAR CHROMATE
4	"XX" #2	SCREW, #8-32, BIND. HD., PHIL-SLOT, (STD)	STEEL	ZN, CLEAR CHROMATE
3	"XX"	SCREW, U-DRIVE, #0	STEEL	ZN, CLEAR CHROMATE
2	"XX"	EYELET TWIN TERMINAL	BRASS	NICKEL PLATE
1	1	MOLDING, CB BTS, 600V	PHENOLIC	BLACK

REDRAWN: ADD -50 OPT EC. NO: JG2013-1610 DRAWN: ENCLINS 2013/05/06 CHKD: JMACNEIL 2013/05/06 APPR: JMACNEIL 2013/06/06 REV DESCRIPTION	QUALITY SYMBOLS	GENERAL TOLERANCES (UNLESS SPECIFIED)	DIMENSION STYLE	SCALE	DESIGN UNITS	THIRD ANGLE PROJECTION
	▽=0	mm INCH	MM/IN	1:1	INCH	
	▽=0	4 PLACES ± --- ± ---	DRAWN BY DATE	TITLE		
		3 PLACES ± --- ± .005	JENCINAS 2013/05/06	.563" DOUBLE ROW BTS, .800" TALL RIBS, CLOSED BOTTOM		
	2 PLACES ± 0.13 ± .01	JMACNEIL 2013/05/06	CHECKED BY DATE	Molex MOLEX INCORPORATED		
	1 PLACE ± 0.3 ± ---	JMACNEIL 2013/06/06	APPROVED BY DATE	DOCUMENT NO.		
	ANGULAR ± 2°		MATERIAL NO.	SD-38221-001		
			SEE CHART	SHEET NO.		
				1 OF 1		
				THIS DRAWING CONTAINS INFORMATION THAT IS PROPRIETARY TO MOLEX INCORPORATED AND SHOULD NOT BE USED WITHOUT WRITTEN PERMISSION		