

Excellent Integrated System Limited

Stocking Distributor

Click to view price, real time Inventory, Delivery & Lifecycle Information:

[TDK-Lambda Americas, Inc.](#)

[MB1206](#)

For any questions, you can email us directly:

sales@integrated-circuit.com

TDK-Lambda

MB Series

6A to 36A, 250VAC EMI Filters

Features

- ◆ High Attenuation Wide Band Two Stage Filter
- ◆ Screw Terminals with Cover
- ◆ Low Profile, Metal Case



Last time buy - June 1, 2014

| Specifications | | | | | | |
|--|----|---|--------|--------|--------|--------|
| Model | | MB1206 | MB1210 | MB1216 | MB1220 | MB1236 |
| Rated Voltage (AC,DC) | V | 250V | | | | |
| Rated Current (AC,DC) (1) | A | 6 | 10 | 16 | 20 | 36 |
| Test Voltage (terminal to case, AC 1 min.) | V | 2500V (20mA) at 25°C, 70% RH | | | | |
| Isolation Resistance (terminal to case, 500VDC) | Ω | 100M Ohms min. at 25°C, 70% RH | | | | |
| Leakage Current | - | 125V, 60Hz =0.5mA max.; 250V, 60Hz =1mA max. | | | | |
| DC Resistance | mΩ | 140 | 50 | 34 | 20 | 9 |
| Temperature Rise | °C | 40°C max. | | | | |
| Operating Temperature (1) | °C | -25 to +85°C | | | | |
| Operating Humidity | % | 30% to 95% RH (non-condensing) | | | | |
| Storage Temperature | °C | -40 to +85°C | | | | |
| Storage Humidity | % | 10% to 95% RH (non-condensing) | | | | |
| Vibration | - | Sweep:10-55-10Hz (1min.), Amplitude 1.5mm X, Y, and Z axes, 2 hours each | | | | |
| Safety Standard | - | UL1283, CSA C22.2 No.8 (C-UL), VDE0565 Teil3, Teil3A2, and EN133200 (VDE) | | | | |

Notes:

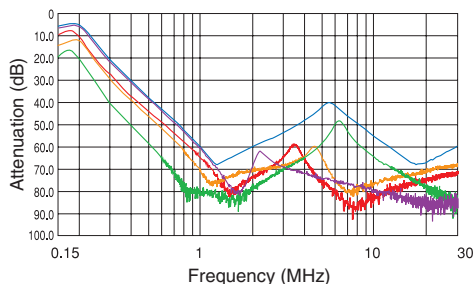
(1) Value at Ta ≤35°C. Refer to the derating curve at Ta > 35°C.

TDK-Lambda

MB Series

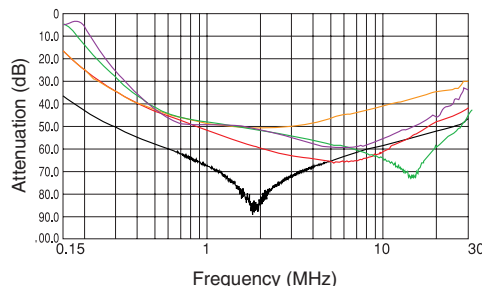
Typ. Insertion Loss, Symmetrical

MB1206 MB1210 MB1216 MB1220 MB1236

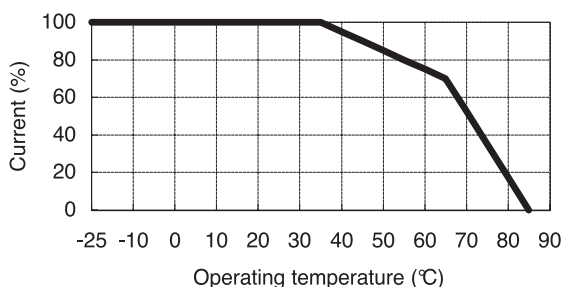


Typ. Insertion Loss, Asymmetrical

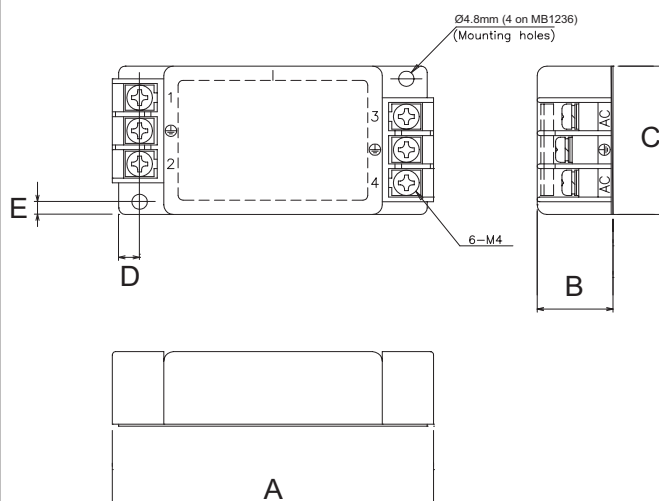
MB1206 MB1210 MB1216 MB1220 MB1236



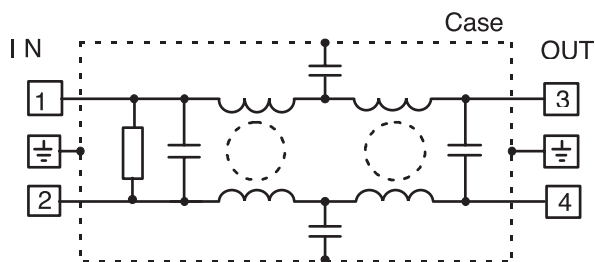
Derating



Outline Drawing



Circuit



For Additional Information, please visit
us.tdk-lambda.com/lp/products/mb-series.htm



Dimensions Table

| Model | A | B | C | D | E | Weight (g) |
|--------|-----|------|----|-----|-----|------------|
| MB1206 | 100 | 23.6 | 47 | 6.5 | 4 | 190 |
| MB1210 | 107 | 26 | 47 | 6.5 | 4 | 220 |
| MB1216 | 117 | 30 | 47 | 6.5 | 4 | 310 |
| MB1220 | 151 | 35 | 52 | 6.5 | 4 | 530 |
| MB1236 | 151 | 35 | 67 | 7.5 | 6.5 | 660 |

Last time buy - June 1, 2014