

## Excellent Integrated System Limited

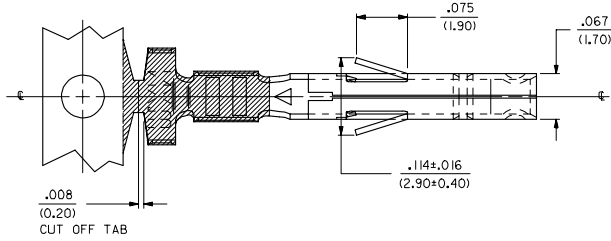
Stocking Distributor

Click to view price, real time Inventory, Delivery & Lifecycle Information:

[Molex Connector Corporation](#)  
[0039000186](#)

For any questions, you can email us directly:

[sales@integrated-circuit.com](mailto:sales@integrated-circuit.com)



**NOTES:**

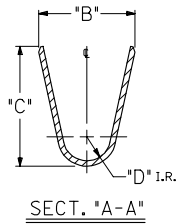
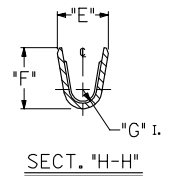
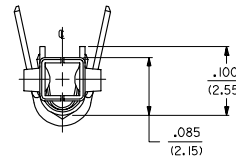
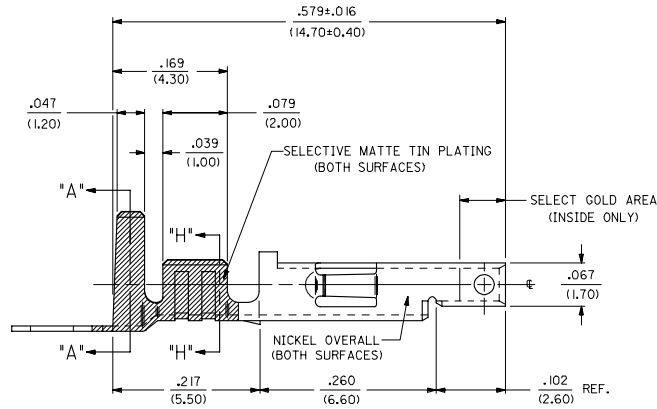
- PART DESIGNED IN METRIC.
- TERMINAL FOR USE WITH 5557 SERIES HOUSINGS.
- MATES WITH 5558, 5566 AND 5569 SERIES CONNECTORS.
- REFER TO DWG. NO. CS-5556\*/5558\* FOR CRIMP SPECIFICATIONS.
- PRODUCT SPECIFICATION AND PROCESSING PARAMETERS SEE: PS-5556-001, PS-5556-002, PS-5556-003

**MATERIAL:**

- CDA 260 BRASS, .0080±.0004/10.203±0.010 THICK.
- CDA 510 PHOS. BRONZE .0080±.0004/10.203±0.010 THICK.

**PLATING:**

- A. SELECTIVE GOLD PLATE .000030/10.00076 MIN., AND SELECTIVE MATTE TIN .000100/10.00254 OVER .000050/10.00127 NICKEL OVERALL.
- B. SELECTIVE GOLD PLATE .000015/10.00038 MIN., AND SELECTIVE MATTE TIN .000100/10.00254 OVER .000050/10.00127 NICKEL OVERALL.
- C. SELECTIVE GOLD PLATE .000050/10.00127 MIN., AND SELECTIVE MATTE TIN .000100/10.00254 OVER .000050/10.00127 NICKEL OVERALL.
- THE PRIMARY SHIPPING CARTON WILL BE LABELED 'COMPLIANT TO RoHS DIRECTIVE 2002/95/EC AND ELV ANNEX II OF DIRECTIVE 2000/53/EC.' CARTONS WITHOUT THIS LABEL MAY CONTAIN PRODUCT WITH TIN-LEAD PLATING.



REMOVE 28-30 GAGE E.C. NO. UCF2006-1959 DRAWN BY: 2006/07/11 LFK/KS/PULLGAR APPROVED: JOMERCI 2006/07/16 DESCRIPTION:	QUALITY SYMBOLS	GENERAL TOLERANCES (UNLESS SPECIFIED)	DIMENSION STYLE IN/MM	SCALE 10:1	DESIGN UNITS METRIC	THIRD ANGLE PROJECTION
	▽=0 ▽=0	4 PLACES ±.010 ±.010 3 PLACES ±.010 ±.010 2 PLACES ±.025 ±.014 1 PLACE ±0.36 ±.010	DRAWN BY: GEP DATE: 5/17/90 CHECKED BY: R/JF DATE: 5/17/90 APPROVED BY: RAS DATE: 5/17/90	TITLE	TERMINAL, MINI-FIT JR., FEMALE CRIMP, SELECT GOLD BLANK PLATE FORM	
	R. ANGULAR ±1/2°	DRAFT WHERE APPLICABLE MUST REMAIN WITHIN DIMENSIONS	MATERIAL NO. SEE SHIT. 2	DOCUMENT NO. SD-5556-GSP*	SHEET NO. 1 OF 2	
	F1 REV	THIS DRAWING CONTAINS INFORMATION THAT IS PROPRIETARY TO MOLEX INCORPORATED AND SHOULD NOT BE USED WITHOUT WRITTEN PERMISSION				

