

Excellent Integrated System Limited

Stocking Distributor

Click to view price, real time Inventory, Delivery & Lifecycle Information:

[FCI](#)
[10082627-404HLF](#)

For any questions, you can email us directly:
sales@integrated-circuit.com

PIN PLATING CODES:	
10082627-1YY	30u"/0.76u MIN (SEE NOTE 12) OVER 50u"/1.27u MIN Ni
10082627-2YY	15u"/0.38u MIN (SEE NOTE 12) OVER 50u"/1.27u MIN Ni
10082627-3YY	50u"/1.27u MIN Au OVER 50u"/1.27u MIN Ni
10082627-4YY	100u"/2.54u MIN Sn OVER 50u"/1.27u MIN Ni (SEE NOTE 13)
10082627-5YY	15u"/0.38u MIN (SEE NOTE 12) OVER 50u"/1.27u MIN Ni
10082627-6YY	30u"/0.76u MIN (SEE NOTE 12) OVER 50u"/1.27u MIN Ni

- ③. PIN MATERIAL: PHOS-BRONZE.
- ④. MEASURED WITH PART IN RESTRAINED CONDITION.
- 5. TWO SIDES OF PIN TIPS NOT PLATED. TYPICAL BOTH ENDS.
- ⑥. 2LBS/0.9KG MIN PIN RETENTION IN EITHER DIRECTION.
- ⑦. ±.010/0.25 TOL APPLIES TO ALL 'G' TAILS EXCEPT INDICATED PARTS ON TABLE WHERE +.010/0.25 -.000/0.00 APPLIES.
- ⑧. DETAIL N DIMENSIONS APPLY TO 2 POSITION PARTS ONLY
- ⑨. SECTION R-R DIMENSIONS ONLY APPLY TO RETENTION. PIN POSITIONS FOR 3 POSITION PARTS AND LARGER. RETENTION PIN POSITIONS LOCATED AT MANUFACTURER'S OPTION.
- 10. 5LB/2.3KG MAX INSERTION FORCE AND .25LB/.1KG MIN RETENTION FORCE PER RETENTIVE PIN USING .062/1.57 THICK CIRCUIT BOARDS AND RECOMMENDED HOLE PATTERN.
- ⑪. THESE PRODUCTS MEETS EUROPEAN UNION DIRECTIVES AND OTHER COUNTRY REGULATION AS DESCRIBED IN GS-22-008.
- ⑫. PLATING OPTIONS: MAY BE EITHER GOLD OR GXT PLATED AT MANUFACTURER'S OPTION.
- ⑬. "THIS PRODUCT HAS 100% TIN PLATING IN THE INTERFACE AND HAS NOT BEEN TESTED FOR WHISKER GROWTH IN ALL INTERCONNECT ENVIRONMENTS."

NOTES

①. PART NUMBER OPTIONS:

PIN PLATING CODES (SEE ABOVE)

HIGH TEMP. MATERIAL:

FOR HIGH-TEMPERATURE APPLICATIONS, SPECIFY AN "H" AT THE END OF THE PART NUMBER, AND PCT WILL BE SUPPLIED.

NUMBER OF POSITION:

ANY NUMBER OF POSITIONS FROM 2 THRU 36.

PACKAGING:

PACKAGED IN POLY BAGS.

TWELVE DIGIT PART NUMBERS FOLLOWED BY A "T" ARE PACKAGED IN TUBES. SEE SPECIFIC PART NUMBERS FOR AVAILABILITY.

LEAD FREE:

ADD "HLF" SUFFIX AT THE END OF PART NUMBER FOR LEAD FREE OPTION, NOT AVAILABLE FOR -5YY, -5YYH, -6YY & -6YYH.

②. BODY MATERIAL:

MANUFACTURER'S OPTION OF NYLON OR PCT, GLASS FIBER REINFORCED, FLAME RETARDANT PER UL-94V-0. COLOR: BLACK.

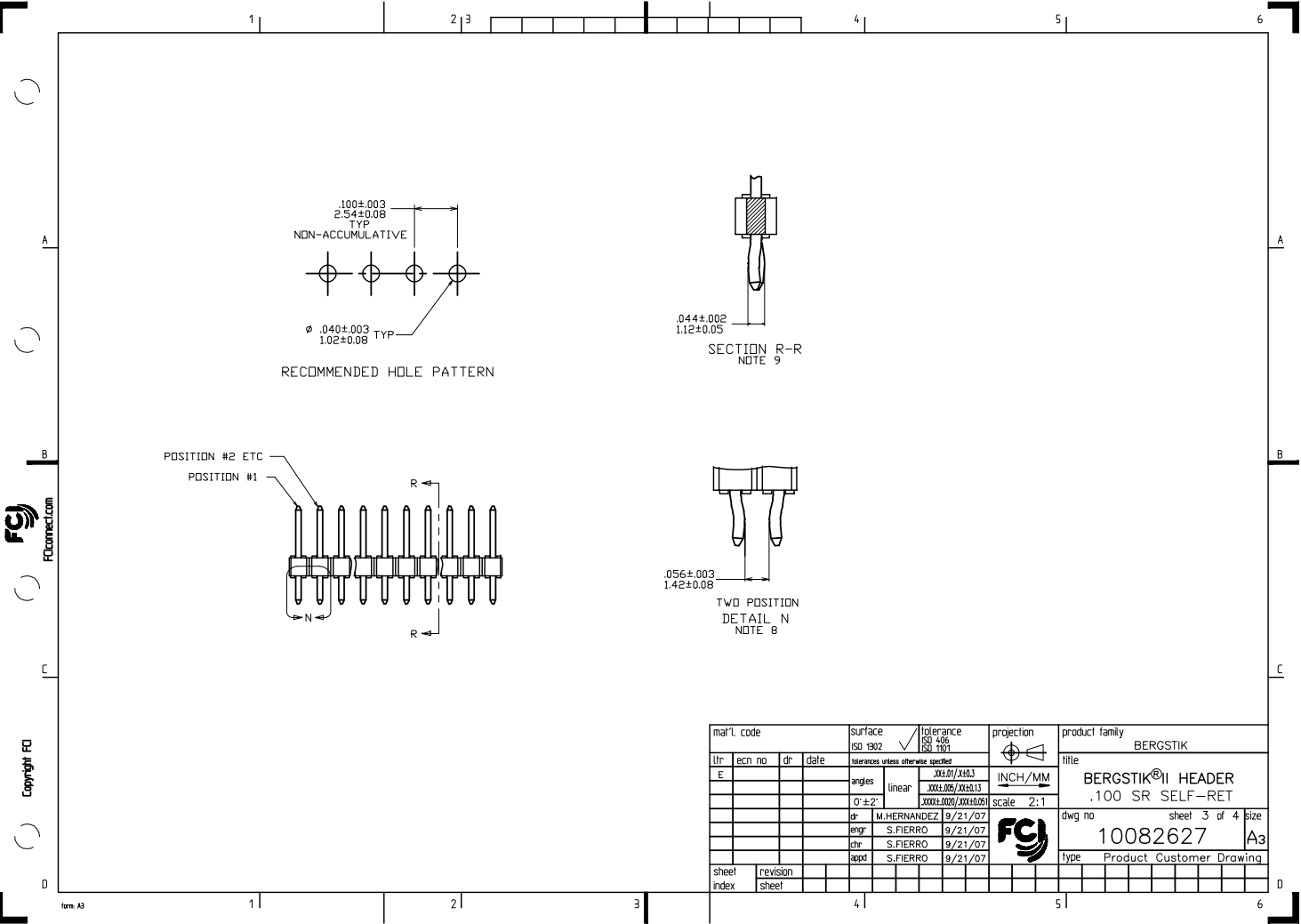
OR

MINERAL FILLED LCP FLAME RETARDENT, PER UL-94V-0. COLOR: BLACK.

PART NUMBERS WITH "H" SUFFIX WILL WITHSTAND EXPOSURE TO 260°C PEAK TEMPERATURE FOR 20 SECONDS IN WAVE SOLDER, INFRA-RED OR VAPOR PHASE SOLDER PROCESS.

PART NUMBERS WITHOUT "H" SUFFIX WILL WITHSTAND EXPOSURE TO 260°C PEAK TEMPERATURE FOR WAVE SOLDER PROCESS.

mat'l. code		surface	tolerance	projection	product family
ISO 1902		ISO 1902	ISO 1902	ISO 1902	BERGSTIK
ltr	ecm no	dr	date	tolerances unless otherwise specified	title
E				linear	BERGSTIK® II HEADER
				0 ± .2	.100 SR SELF-RET
				dr	M.HERNANDEZ 9/21/07
				enrg	S.FIERRO 9/21/07
				chr	S.FIERRO 9/21/07
				appd	S.FIERRO 9/21/07
sheet	revision				dwg no
index	sheet				10082627
					sheet 2 of 4 size
					A3
					Type Product Customer Drawing



mat'l. code		surface	tolerance	projection	product family
ISO 1902		ISO 406	ISO 1101		BERGSTIK
tr	ecm no	dr	date	title	
E				BERGSTIK® II HEADER	
tolerances unless otherwise specified				INCH/MM	.100 SR SELF-RET
angles	linear	$0.012/0.150$ $0.001/0.05/0.010/0.13$ $0.0001/0.002/0.001/0.026$		scale	2:1
dr	M.HERNANDEZ	9/21/07		dwg no	
enrg	S.FIERRO	9/21/07		10082627	sheet 3 of 4 size
chr	S.FIERRO	9/21/07		A3	
appd	S.FIERRO	9/21/07		Type Product Customer Drawing	
sheet index	revision sheet				

PRODUCT NUMBER	TOTAL PIN LENGTH		TAIL LENGTH		MATING LENGTH		PACKAGING	NOTE	RETENTION POSITION	LF OPTION
	DIM F	DIM F	DIM G	DIM G	DIM H	DIM H				
	ENGLISH	METRIC	ENGLISH	METRIC	ENGLISH	METRIC				
10082627-X04H	0.538	13.66	0.120	3.05	0.318	8.08	POLY BAGS/TUBE	-	2,3	NOTE 1,11



Copyright FCI

mat'l. code		surface	tolerance	projection	product family
ISO 1902		ISO 406	ISO 1101		BERGSTIK
tr	ecm no	dr	date	title	
E				BERGSTIK® II HEADER	
tolerances unless otherwise specified				INCH/MM	.100 SR SELF-RET
angles	linear	0 ± .2		scale	2:1
dr	M.HERNANDEZ	9/21/07		dwg no	
enr	S.FIERRO	9/21/07		10082627	sheet 4 of 4 size
chr	S.FIERRO	9/21/07		A3	
app	S.FIERRO	9/21/07		Type Product Customer Drawing	
sheet index	revision sheet				