

## Excellent Integrated System Limited

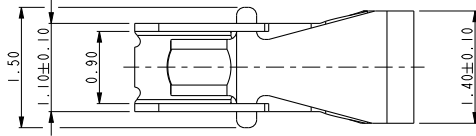
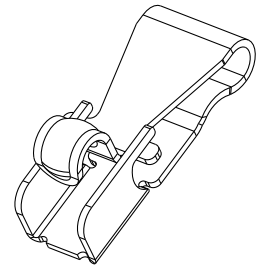
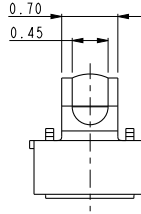
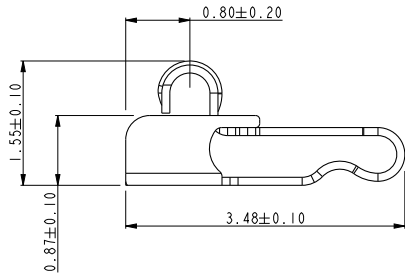
Stocking Distributor

Click to view price, real time Inventory, Delivery & Lifecycle Information:

[FCI](#)  
[10115748-009RLF](#)

For any questions, you can email us directly:  
[sales@integrated-circuit.com](mailto:sales@integrated-circuit.com)

	PRODUCT NO.
FCI	10115748-001RLF 10115748-003RLF 10115748-009RLF



- NOTES:  
 1. MATERIAL: BERYLLIUM COPPER ALLOY.  
 2. CONTACT PLATING:  
 CONTACT AREA: PLATING 1um Au OVER 1.0/3.0 um Ni UNDERPLATE.  
 or PLATING 0.05-0.15um Au OVER 1.0/3.0 um Ni UNDERPLATE.  
 or PLATING 1um GXT OVER 1.0/3.0 um Ni UNDERPLATE.  
 (1um GXT is 0.025-0.125um Au over 0.875um PdNi)  
 SOLDER AREA: PLATING 0.05 TO 0.15um Au OVER 1.0/3.0 um Ni UNDERPLATE.  
 3. PACKAGING: TAPE & REEL  
 4. PART NUMBER DESCRIPTION:  
 10115748- 0 0 X X X X

- LF: LEAD FREE  
 R: TAPE & REEL  
 CONTACT PLATING:  
 1: 1um Au OVER Ni  
 3: 0.05 to 0.15um Au OVER Ni  
 9: 1um GXT OVER Ni

rev	ecn no	dr	date
A	DG10-0291	NZ	2010-08-05
B	DG11-0048	SM	2011-02-22
C	ELX-DG-011091-1	ANDY	2012-03-28
-	-	-	-
-	-	-	-
-	-	-	-

Copyright FCI.

spec ref	*	dr	Louis Ng	2010/08/11	projection	mm	size	A4	scale	15.000
tolerance std	ASME Y14.5	eng	Andy Lu	2012/03/28			ecn no	ELX-DG-011091-1		
surface	ASME Y14.5	chr	Young Ou	2012/03/28			product family	-	rel level	Released
		appr	Pei-Ming Zheng	2012/03/28			cat. no.	10115748	rev	C
TOLERANCES UNLESS OTHERWISE SPECIFIED linear: 0.X ±0.25, 0.XX ±0.10, 0.XXX ±0.050 angular: 0° ±2°		www.fci.com		ANTENNA CONNECTOR UNIVERSAL CONTACT		Product - Customer Drw		sheet 1 of 1		

Print File - REV C - 2009-08-09