

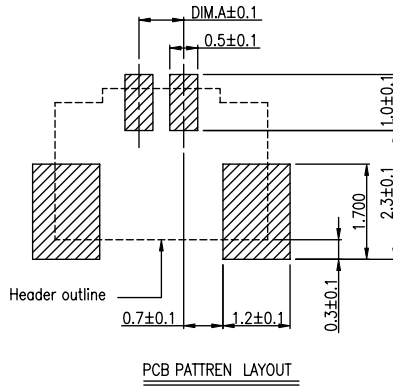
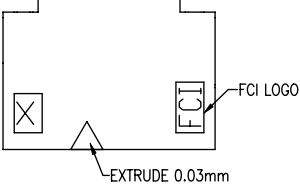
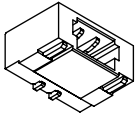
Excellent Integrated System Limited

Stocking Distributor

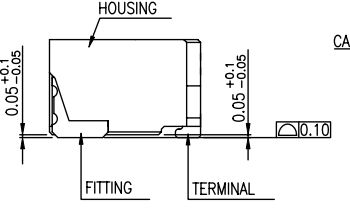
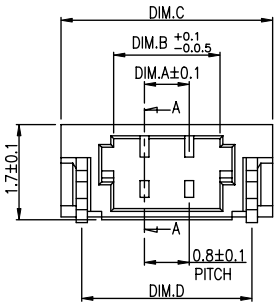
Click to view price, real time Inventory, Delivery & Lifecycle Information:

[FCI](#)
[10116780-002010LF](#)

For any questions, you can email us directly:
sales@integrated-circuit.com



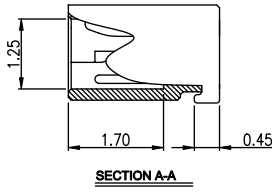
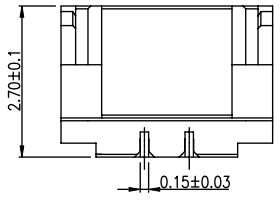
- NOTES:**
- MATERIAL:**
HOUSING: HALOGEN FREE HIGH TEMPERATURE THERMOPLASTIC, UL94V-0.
TERMINAL: COPPER ALLOY.
FITTING NAIL: COPPER ALLOY.
 - FINISH:**
UNDER PLATING: 30~60u" NICKEL OVERALL.
CONTACT AREA, SOLDER TAIL AND FITTING NAIL: SELECTIVE GOLD PLATED OVERALL(SEE P/N DESCRIPTION).
 - REFLOW SOLDER CAPABLE TO 260°C PEAK TEMP. FOR 10 SECONDS MAX.
 - SPEC. PLS. REFER TO GS-12-0929.
 - PACKAGE PLS. REFER TO GS-14-2102.
 - PART NUMBER DESCRIPTION:**
10116780-XXX X X X LF
NO OF CONTACTS(CKT) | | | |
PACKING 0: TAPE & REEL | | | |
LEAD FREE
COLOR 0: BLACK
PLATING 1: 1u" MIN. GOLD FLASH OVERALL (TERMINAL AND FITTING NAIL)



ORDERING INFORMATION FOR USER REFERENCE

NAME	PART NO.
BOARD CONN.	10116780-XXXXXXLF
CABLE CONN.	10116781-XXXXXXLF

CKT	Dim.A	Dim.B	Dim.C	Dim.D	CKT	Dim.A	Dim.B	Dim.C	Dim.D
002	0.80	1.90	3.78	3.04	010	7.20	8.30	10.18	9.44
003	1.60	2.70	4.58	3.84	011	8.00	9.10	10.98	10.24
004	2.40	3.50	5.38	4.64	012	8.80	9.90	11.78	11.04
005	3.20	4.30	6.18	5.44	014	10.40	11.50	13.38	12.64
006	4.00	5.10	6.98	6.24	015	11.20	12.30	14.18	13.44
007	4.80	5.90	7.78	7.04	016	12.00	13.10	14.98	14.24
008	5.60	6.70	8.58	7.84	018	13.60	14.70	16.58	15.84
009	6.40	7.50	9.38	8.64					



mat'l. code	surface	tolerance	projection	product family
	ASME Y14.5	ASME Y14.5		WTB
ltr	ecn	no	dr	date
A			WL	05/11/11
B	T-004781		WL	08/03/11
tolerances unless otherwise specified				
	angles			.X ± 0.25
				.XX ± 0.15
				.XXX ± 0.10
	dr	WENDY CHEN		03/11/11
	enrg	WENDY CHEN		03/11/11
	chr	WENDY CHEN		03/11/11
	appd	GARY HSIEH		03/11/11
sheet	revision	B		
index	sheet	1		