

Excellent Integrated System Limited

Stocking Distributor

Click to view price, real time Inventory, Delivery & Lifecycle Information:

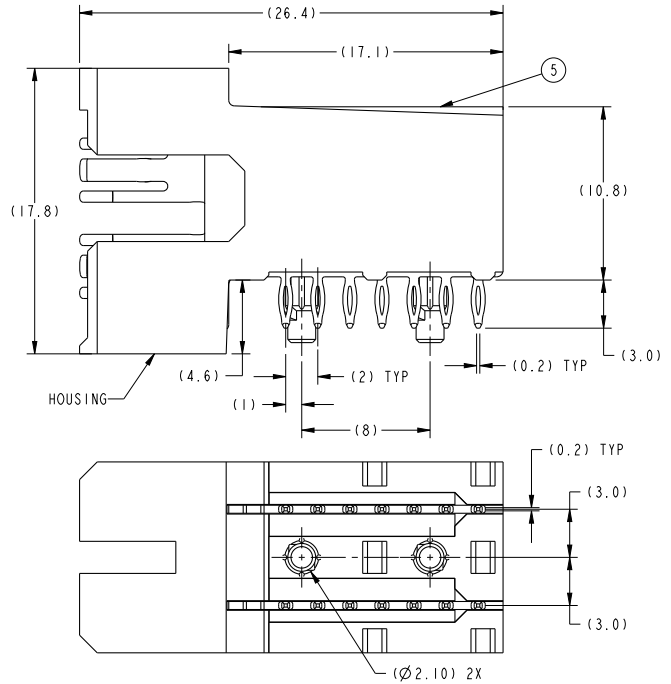
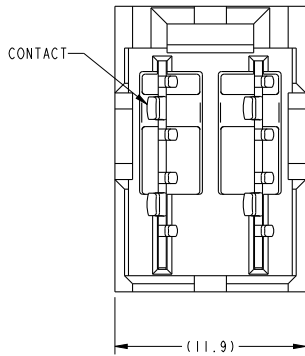
[FCI](#)

[10009556-001LF](#)

For any questions, you can email us directly:

sales@integrated-circuit.com

PRODUCT NUMBER (SEE NOTE 7)	CONTACT PLATING		ROHS COMPATIBILITY
	SEPARABLE INTERFACE	PRESS-FIT TAIL	
	10009556-001 10009556-001LF	0.76 μ m MIN GXT OVER NICKEL	
			N/A SEE NOTE 8



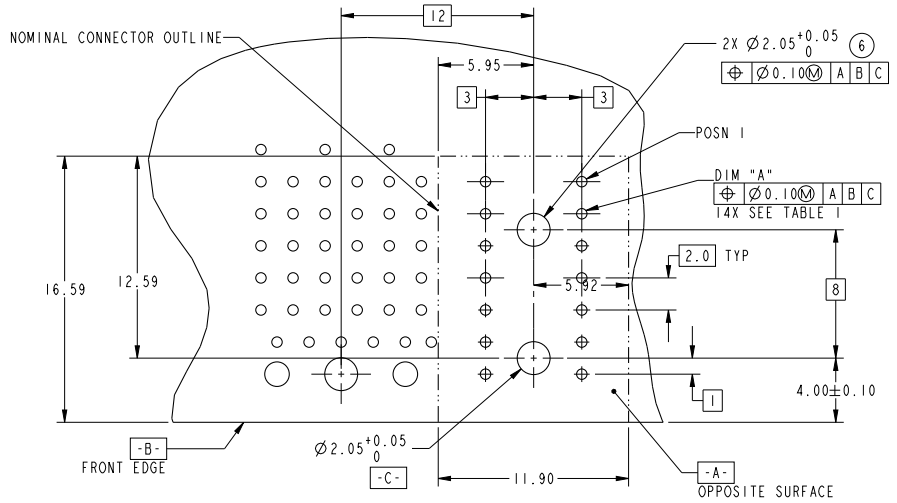
spec ref	GS-12-220			dr	Chen-Hong Tan	2005/08/03	projection	MM	size	A4	scale	1:1				
tolerance std	TOLERANCES UNLESS OTHERWISE SPECIFIED			eng	Suzie Nah	2013/12/26			ecn no	ELX-S-16550-1						
ASME Y14.5				chr	-	product family			2 mm HIGH POWER	rel level	Released					
surface		linear	0.X	\pm .3		FCI www.fci.com	title 1 X 2 HEADER ASSEMBLY, PRESS-FIT	dwg no 10009556	rev G							
ASME Y14.5			0.XX	\pm .13												
			0.XXX	\pm .051												
	angular	0°	\pm 2°													
cat. no. - sheet 1 of 2																

Print File - REV C - 2009-08-09

TOP LAYER DESCRIPTION	TABLE 1 PLATED THROUGH-HOLE REQUIREMENTS							
	DRILLED HOLE DIAMETER	COPPER THICKNESS	TIN-LEAD THICKNESS	NICKEL THICKNESS	GOLD THICKNESS	TIN THICKNESS	SILVER THICKNESS	FINISHED HOLE DIAMETER (DIM "A")
TIN-LEAD	0.81-0.86 (0.85 DRILL)	0.025 - 0.050	0.005 - 0.015	--	--	--	--	0.65 - 0.80
IMMERSION TIN	0.81-0.86 (0.85 DRILL)	0.025 - 0.050	--	--	--	0.9 - 1.5 μ m	--	0.70 - 0.80
IMMERSION SILVER	0.81-0.86 (0.85 DRILL)	0.025 - 0.050	--	--	--	--	0.15 - 0.65 μ m	0.70 - 0.80
COPPER (SEE NOTE 10)	0.81-0.86 (0.85 DRILL)	0.025 - 0.050	--	--	--	--	--	0.70 - 0.80
GOLD	0.81-0.86 (0.85 DRILL)	0.025 - 0.050	--	0.003 - 0.007	FLASH UP TO 0.0002	--	--	0.69 - 0.80

NOTES:

- CONNECTOR MATERIALS:
HOUSING: HI TEMP THERMOPLASTIC, BLACK,
UL94V-0 COMPLIANT
CONTACT: HIGH PERFORMANCE COPPER ALLOY
- CONTACT PLATING:
PRESS-FIT TAIL: 0.5-1.5 μ m TIN-LEAD OVER NICKEL
SEPARABLE INTERFACE: 0.5-1.5 μ m MATTE TIN OVER NICKEL
SEPARABLE INTERFACE: 0.76 μ m MIN GTX OVER NICKEL
- PRODUCT SPECIFICATION: GS-12-220
- APPLICATION SPECIFICATION: GS-20-023
- PRODUCT MARKING (PRODUCT NUMBER & LOT CODE) ON THIS SURFACE.
- INDICATED HOLES ARE UNPLATED.
- "LF" SUFFIX DENOTES LEAD FREE PLATING
- PRODUCT MEETS EUROPEAN UNION DIRECTIVES AND OTHER COUNTRY REGULATION AS DESCRIBED IN FCI SPECIFICATION GS-12-008.
- PACKAGING MEETS FCI SPECIFICATION GS-14-920.
- COPPER PLATING THICKNESS AT CENTER OF VIA HOLE CAN BE NO MORE THAN 0.003 LESS THAN OTHER AREAS.



RECOMMENDED PCB LAYOUT,
COMPONENT SIDE
(SHOWN BESIDE A 5 ROW METRAL 1000 RECEPTACLE)

spec ref	GS-12-220			dr	Chen-Hong Tan	2005/08/03	projection	MM	size	A4	scale	3:1
tolerance std	TOLERANCES UNLESS OTHERWISE SPECIFIED			eng	Suzie Nah	2013/12/26			ec n no	ELX-S-16550-1		
ASME Y14.5				chr	-	product family				2 mm HIGH POWER		
surface	linear	0.X	±.3									
		0.XX	±.13									
ASME Y14.5	angular	0°	±2°									
www.fci.com				cat. no.				product family	2 mm HIGH POWER			
				title	1 X 2 HEADER ASSEMBLY, PRESS-FIT			dwg no	10009556			
				rev	G			sheet	2 of 2			

Print File: ELX-S-16550-01



Copyright FCI.