

Excellent Integrated System Limited

Stocking Distributor

Click to view price, real time Inventory, Delivery & Lifecycle Information:

[FCI](#)

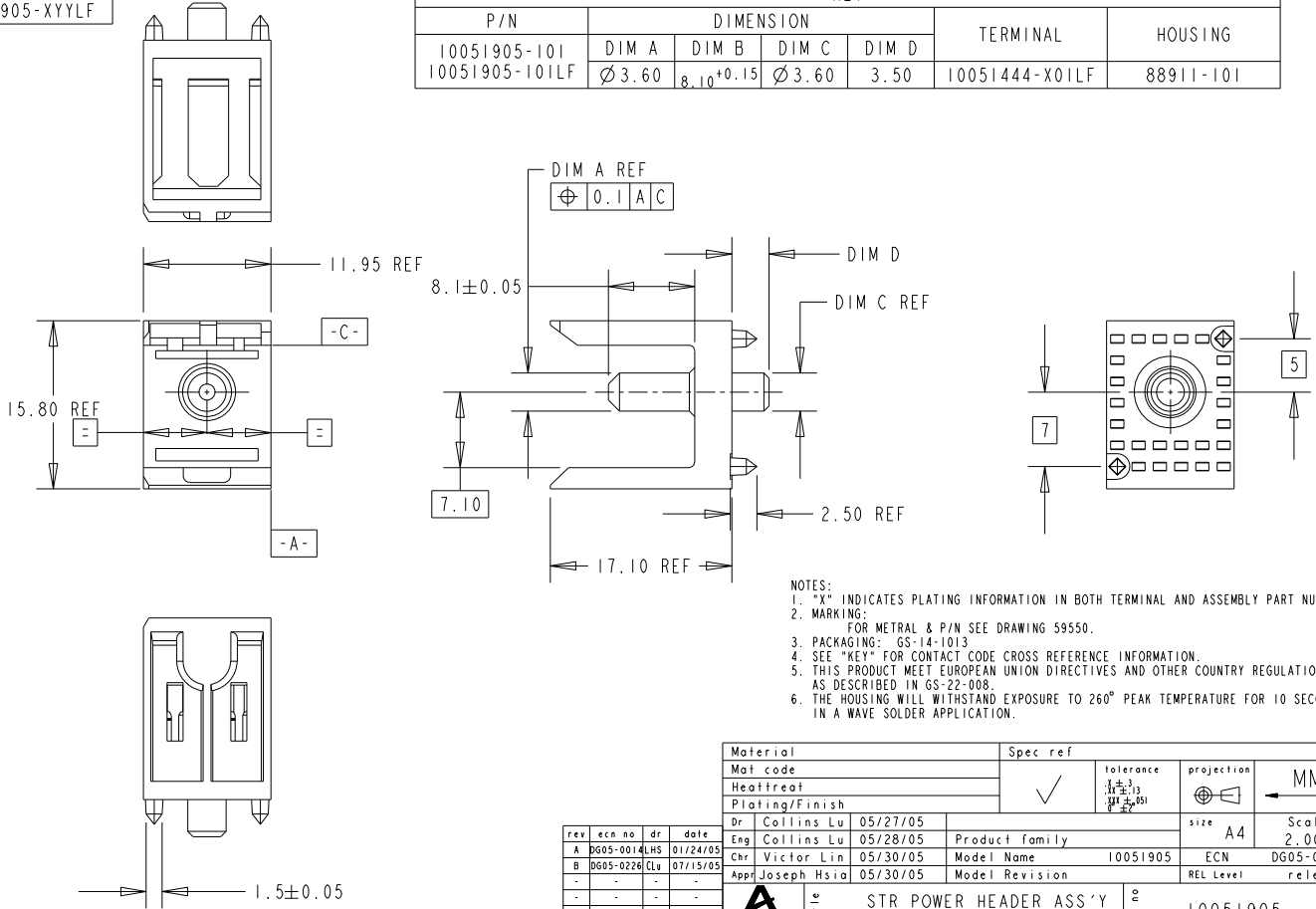
[10051905-101](#)

For any questions, you can email us directly:

sales@integrated-circuit.com

PRODUCT NUMBER
10051905-XYX
10051905-XYXLF

P/N	DIMENSION				TERMINAL	HOUSING
	DIM A	DIM B	DIM C	DIM D		
10051905-101	Ø 3.60	8.10 ^{+0.15}	Ø 3.60	3.50	10051444-X01LF	88911-101
10051905-101LF						



- NOTES:
1. "X" INDICATES PLATING INFORMATION IN BOTH TERMINAL AND ASSEMBLY PART NUMBER.
 2. MARKING:
FOR METRAL & P/N SEE DRAWING 59550.
 3. PACKAGING: GS-14-1013
 4. SEE "KEY" FOR CONTACT CODE CROSS REFERENCE INFORMATION.
 5. THIS PRODUCT MEET EUROPEAN UNION DIRECTIVES AND OTHER COUNTRY REGULATIONS AS DESCRIBED IN GS-22-008.
 6. THE HOUSING WILL WITHSTAND EXPOSURE TO 260° PEAK TEMPERATURE FOR 10 SECOND IN A WAVE SOLDER APPLICATION.

Material		Spec ref	
Mat code		tolerance	projection
Heatreat	✓	±0.03	MM
Plating/Finish			
Dr	Collins Lu	05/27/05	size A4
Eng	Collins Lu	05/28/05	Scale 2.000
Chr	Victor Lin	05/30/05	Model Name 10051905
Appr	Joseph Hsia	05/30/05	Model Revision
Title		REL Level released	
STR POWER HEADER ASS'Y		10051905	
Guiding Pin 8.1mm		Rev. B	
Proj/E file	catalog no	CUSTOMER	sheet 1 of 2

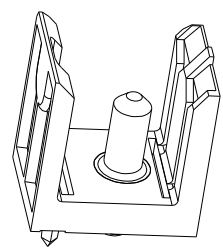
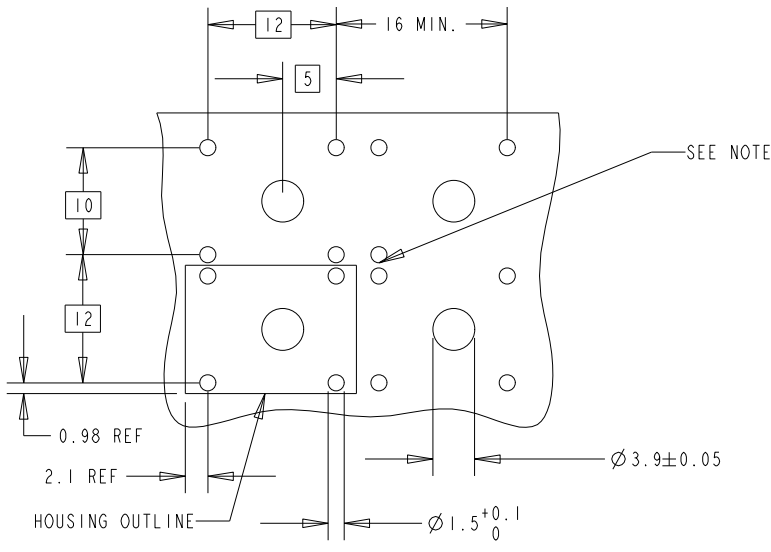
rev	ecm no	dr	date
A	DG05-0014	LHS	01/24/05
B	DG05-0226	CLV	07/15/05
-	-	-	-
-	-	-	-
-	-	-	-
-	-	-	-

Tous droits strictement réservés. Reproduction ou communication de ces liens interdite sans autorisation écrite de FCI. Propriété de FCI. Droits de reproduction FCI.

FCI

All rights strictly reserved. Reproduction or issue to third parties in any form without written authorization of FCI. Copyright FCI.

Tous droits strictement réservés. Reproduction ou communication de ces liens interdite sans autorisation écrite de FCI. Propriété de FCI. Droits de reproduction FCI.



SEE NOTE

RECOMMENDED HOLE PATTERN COMPONENT SIDE

SCALE 2.000

FCI

All rights strictly reserved. Reproduction or issue to third parties in any form without the prior written consent of FCI. Property of FCI. Copyright FCI.

Material				Spec ref	
Mat code				tolerance	projection
Heat treat				✓	MM
Plating/Finish				⊕	
Dr	05/29/05	14-Jun-05		size	Scale
Eng	Collins Lu	05/29/05	Product family	A4	2.000
Chr	Victor Lin	05/30/05	Model Name	ECBCN	DG05-0014
Appr	Joseph Hsia	05/30/05	Model Revision	REL Level	released
				dwg no	Rev.
Title				10051905	B
Proj/E file catalog no				CUSTOMER	sheet 2 of 2