

## Excellent Integrated System Limited

Stocking Distributor

Click to view price, real time Inventory, Delivery & Lifecycle Information:

[Molex Connector Corporation](#)  
[0444720311](#)

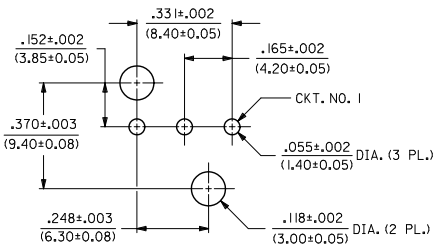
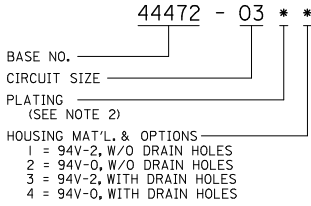
For any questions, you can email us directly:

[sales@integrated-circuit.com](mailto:sales@integrated-circuit.com)

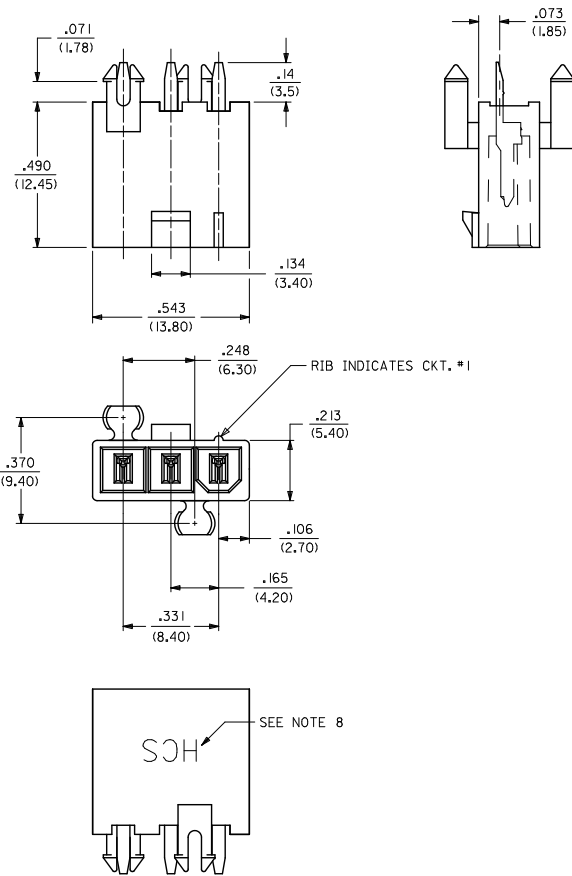
NOTES:

- MATERIALS:  
HOUSING MATERIAL AND DRAIN HOLE OPTIONS:  
1-NYLON 6/6, UL94 V-2, COLOR: NATURAL, WITHOUT DRAIN HOLES  
2-NYLON 6/6, UL94 V-0, COLOR: NATURAL, WITHOUT DRAIN HOLES  
4-NYLON 6/6, UL94 V-0, COLOR: NATURAL, WITH DRAIN HOLES  
TERMINAL:  
COPPER ALLOY
- TERMINAL PLATING:  
1-.000100/(0.00254) MIN. MATTE TIN OVER .000050/(0.00127) MIN. NICKEL
- PRODUCT SPECIFICATION: PS-44476-001
- PACKAGING: TRAY PACKED PER PK-5566-002
- PART MATES WITH MINI-FIT JR. RECEPTACLE NO. 5557.
- PART IS NOT DESIGNED FOR CURRENT SHARING.
- PARTS ARE NOT TO BE MATED OR UN-MATED WHILE CIRCUITS ARE LIVE.
- PARTS PRODUCED AFTER JULY 1, 2004 WILL HAVE "HCS" MARKING INSTEAD OF BLACK STRIPE.
- PART CONFORMS TO CLASS 'B' REQUIREMENTS OF COSMETIC SPECIFICATION PS-45499-002.

LEGEND



RECOMMENDED HOLE LAYOUT FOR .070/(1.78) MAX. THICK P. C. BOARD



ITEM NO.	PLATING (SEE NOTE 2)	ASS'Y. OPT.
44472-0311	1	1
44472-0312	1	2
44472-0314	1	4

<b>CHANGE PLATING</b> EC NO: UCP2072-1560 DRAWN BY: 207/01/09 CHKD: BELL 207/01/09 APPR: SMITH 207/02/02	<b>QUALITY SYMBOLS</b> ∇=0 ∇=0 ∇=0	GENERAL TOLERANCES (UNLESS SPECIFIED)		DIMENSION STYLE IN/MM		SCALE 4:1	DESIGN UNITS METRIC	THIRD ANGLE PROJECTION	
		4 PLACES ±---	±---	DRAWN BY	DATE	TITLE VERT. HDR. ASS., 3 CKT. SINGLE ROW, WITH & W/O DRAIN HOLES, MINI-FIT			
		3 PLACES ±---	±.010	GEP	1994/07/25				
		2 PLACES ±0.25	±.015	CHECKED BY	DATE	MOLEX INCORPORATED			
1 PLACE ±0.38	±---	RJF	1994/07/25						
ANGULAR ±1/2°		APPROVED BY RJF		DATE	1994/07/25	MATERIAL NO.		DOCUMENT NO. SDA-44472-03**	
DRAFT WHERE APPLICABLE MUST REMAIN WITHIN DIMENSIONS				SEE CHART		SHEET NO. 1 OF 1		THIS DRAWING CONTAINS INFORMATION THAT IS PROPRIETARY TO MOLEX INCORPORATED AND SHOULD NOT BE USED WITHOUT WRITTEN PERMISSION	