

Excellent Integrated System Limited

Stocking Distributor

Click to view price, real time Inventory, Delivery & Lifecycle Information:

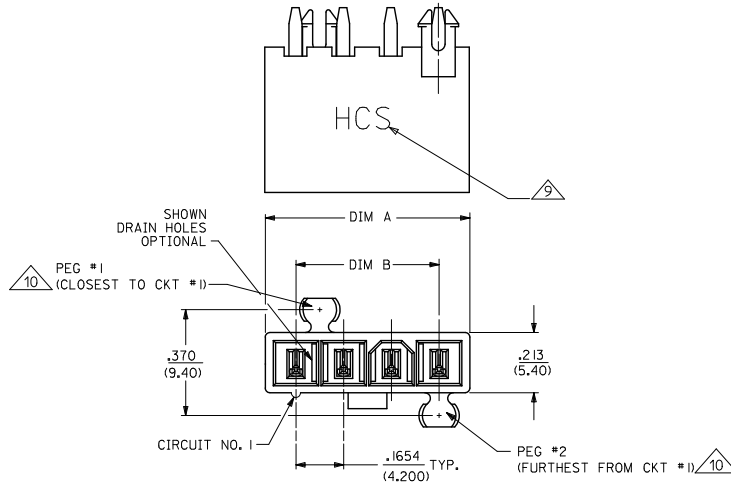
[Molex Connector Corporation](#)

[0444720855](#)

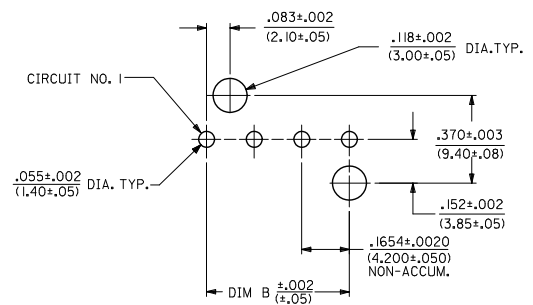
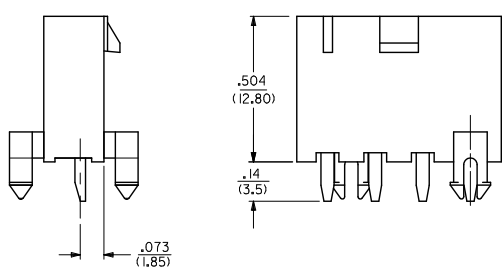
For any questions, you can email us directly:

sales@integrated-circuit.com

| CKT SIZE | DIM A | DIM B |
|----------|------------------|------------------|
| 4 | .709 (18.00) | .496 (12.60) |
| 5 | .874 (22.20) | .661 (16.80) |
| 6 | 1.039 (26.40) | .827 (21.00) |
| 7 | 1.205 (30.60) | .992 (25.20) |
| 8 | 1.370 (34.80) | 1.157 (29.40) |
| 9 | 1.535 (39.00) | 1.323 (33.60) |
| 10 | 1.701 (43.20) | 1.488 (37.80) |
| 11 | 1.866 (47.40) | 1.654 (42.00) |
| 12 | 2.031 (51.60) | 1.819 (46.20) |



- NOTES:
- MATERIALS:
 - HOUSING:
 - *1=NYLON 6/6, UL94 V-2, COLOR: NATURAL
 - *2=NYLON 6/6, UL94 V-0, COLOR: NATURAL
 - *3=NYLON 6/6, UL94 V-2, COLOR: BLACK
 - TERMINALS:
 - COPPER ALLOY
 - TERMINAL PLATING:
 - *1=.000100/(0.00254) MIN. MATTE TIN OVER .000050/(0.00127) MIN. NICKEL
 - *2=.000030/(0.00076) MIN. SELECT GOLD AND .000100/(0.00254) MIN. SELECT MATTE TIN OVER .000050/(0.00127) MIN. NICKEL OVERALL
 - PRODUCT SPECIFICATION: PS-44476-001
 - PACKAGING: SEE CHARTS
 - PART MATES WITH MINI-FIT JR. RECEPTACLE NO. 5557.
 - PART IS NOT DESIGNED FOR CURRENT SHARING.
 - PARTS ARE NOT TO BE MATED OR UN-MATED WHILE CIRCUITS ARE LIVE.
 - 44472-2470 ONLY FOR WIDER LOCKING RAMP.
 - PARTS WILL HAVE "HCS" MARKING.
 - SEE CHART FOR PARTS WITH PEGS REMOVED.
 - PART CONFORMS TO CLASS "B" REQUIREMENTS OF COSMETIC SPECIFICATION PS-45499-002.



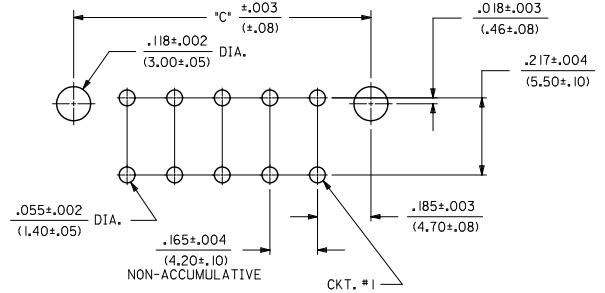
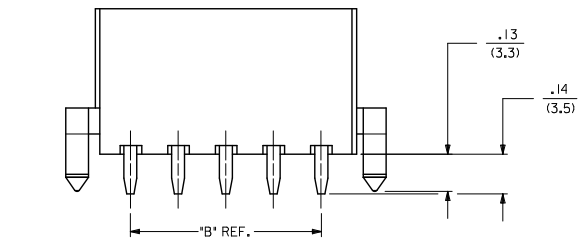
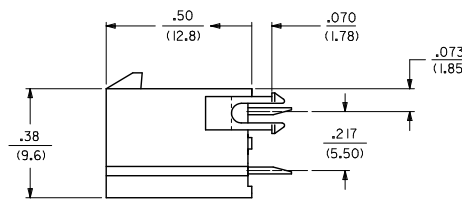
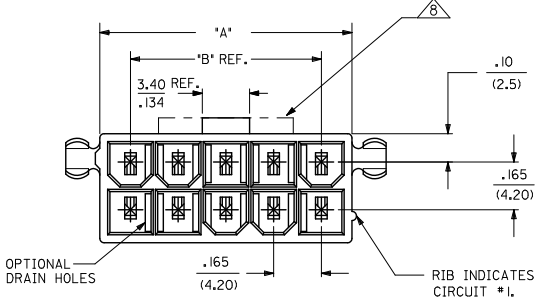
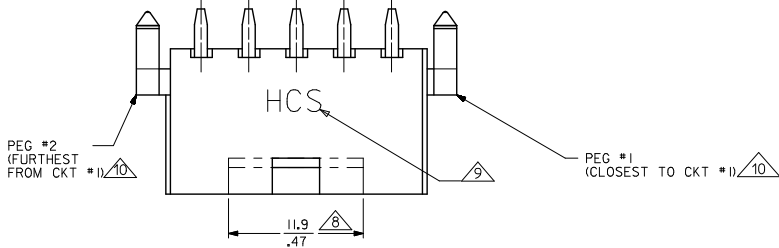
RECOMMENDED HOLE LAYOUT FOR .070/(1.78) MAX. THICK P. C. BOARD VIEWED FROM COMPONENT SIDE

LEGEND: 44472 - ** **
 CIRCUIT SIZE (04-12 FOR SINGLE ROW) (02-24 FOR DUAL ROW)
 ASSEMBLY VERSION (01 THRU 49 FOR SINGLE ROW) (50 THRU 99 FOR DUAL ROW)

SEE SHT. 2 FOR DUAL ROW
 * THE CHART FOR SINGLE ROW PRODUCT IS ON PAGE 6.

| CHANGE PLATING | EC NO. | DATE | DRAWN BY | DATE | TITLE | GENERAL TOLERANCES (UNLESS SPECIFIED) | | DIMENSION STYLE | | SCALE | DESIGN UNITS | THIRD ANGLE PROJECTION |
|----------------|------------|------------|----------|------------|---|---|-------|-----------------|-------|-------|--------------|------------------------|
| | | | | | | mm | INCH | IN/MM | IN/MM | | | |
| UCP2012-1560 | 2012/01/05 | 2012/01/05 | GEP | 1994/07/25 | MINI-FIT VERT HDR ASSY W & W/O PEGS/DRAIN HOLES SINGLE AND DUAL ROW | 4 PLACES ±--- | ±--- | DRAWN BY | DATE | 4:1 | METRIC | MOLEX INCORPORATED |
| DRWINGUNEN | 2012/01/05 | 2012/01/05 | RJF | 1994/07/25 | | 3 PLACES ±--- | ±.015 | CHECKED BY | DATE | | | |
| CHKC:BELL | 2012/01/05 | 2012/01/05 | RJF | 1994/07/25 | | 2 PLACES ±0.38 | ±.020 | APPROVED BY | DATE | | | |
| APPR:SMITH | 2012/02/02 | | RJF | 1994/07/25 | | 1 PLACE ±0.50 | ±--- | | | | | |
| | | | | | | ANGULAR ±1/2° | | | | | | |
| | | | | | | DRAFT WHERE APPLICABLE MUST REMAIN WITHIN DIMENSIONS | | | | | | |
| | | | | | | SEE CHARTS | | | | | | |
| | | | | | | THIS DRAWING CONTAINS INFORMATION THAT IS PROPRIETARY TO MOLEX INCORPORATED AND SHOULD NOT BE USED WITHOUT WRITTEN PERMISSION | | | | | | |

| CIRCUIT SIZE | DIM. "A" | DIM. "B" | DIM. "C" |
|--------------|----------------|----------------|------------------|
| 2 | .21 (5.4) | — | .370 (9.40) |
| 4 | .38 (9.6) | .17 (4.2) | .535 (13.60) |
| 6 | .54 (13.8) | .33 (8.4) | .701 (17.80) |
| 8 | .71 (18.0) | .50 (12.6) | .866 (22.00) |
| 10 | .87 (22.2) | .66 (16.8) | 1.031 (26.20) |
| 12 | 1.04 (26.4) | .83 (21.0) | 1.197 (30.40) |
| 14 | 1.20 (30.6) | .99 (25.2) | 1.362 (34.60) |
| 16 | 1.37 (34.8) | 1.16 (29.4) | 1.528 (38.80) |
| 18 | 1.54 (39.0) | 1.32 (33.6) | 1.693 (43.00) |
| 20 | 1.70 (43.2) | 1.49 (37.8) | 1.858 (47.20) |
| 22 | 1.87 (47.4) | 1.65 (42.0) | 2.024 (51.40) |
| 24 | 2.03 (51.6) | 1.82 (46.2) | 2.189 (55.60) |



SEE SHT. 1 FOR SINGLE ROW

| | | | | | | | |
|---|--------------------------------------|---|--------------------------|--------------|------------------------|------------------------|--|
| SEE SHEET 1 EC NO: UCP2072-1560 DRAWING NO: 2072/01/05 CHKD: BELL APPR: SMITH DATE: 2072/02/02 | QUALITY SYMBOLS ∇=0 ∇=0 ∇=0 | GENERAL TOLERANCES (UNLESS SPECIFIED) mm INCH 4 PLACES ± --- ± --- 3 PLACES ± --- ± .015 2 PLACES ± 0.38 ± .020 1 PLACE ± 0.50 ± --- ANGULAR ± 1/2° | DIMENSION STYLE IN/MM | SCALE 4:1 | DESIGN UNITS METRIC | THIRD ANGLE PROJECTION | TITLE MINI-FIT VERT HDR ASSY W & W/O PEGS/DRAIN HOLES SINGLE AND DUAL ROW |
| | | | | | | | |

THIS DRAWING CONTAINS INFORMATION THAT IS PROPRIETARY TO MOLEX INCORPORATED AND SHOULD NOT BE USED WITHOUT WRITTEN PERMISSION

DUAL ROW PART NUMBERS WITH MATTE TIN PLATING

WITH PEGS

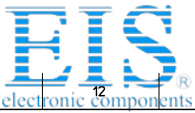
| PLATING: | I (SEE NOTE 2) | PLATING: | I (SEE NOTE 2) | PLATING: | I (SEE NOTE 2) | PLATING: | I (SEE NOTE 2) |
|------------|---------------------|------------|---------------------|------------|------------------|------------|------------------|
| DRAINS: | WITHOUT DRAIN HOLES | DRAINS: | WITHOUT DRAIN HOLES | DRAINS: | WITH DRAIN HOLES | DRAINS: | WITH DRAIN HOLES |
| PEGS: | WITH PEGS | PEGS: | WITH PEGS | PEGS: | WITH PEGS | PEGS: | WITH PEGS |
| MAT'L: | 94V-2 [NATURAL] | MAT'L: | 94V-0 [NATURAL] | MAT'L: | 94V-2 [NATURAL] | MAT'L: | 94V-0 [NATURAL] |
| PACKAGING: | PK-5566-001 | PACKAGING: | PK-5566-001 | PACKAGING: | PK-5566-001 | PACKAGING: | PK-5566-001 |
| ITEM NO. | CKTS | ITEM NO. | CKTS | ITEM NO. | CKTS | ITEM NO. | CKTS |
| 44472-0250 | 2 | 44472-0251 | 2 | 44472-0252 | 2 | 44472-0253 | 2 |
| 44472-0450 | 4 | 44472-0451 | 4 | 44472-0452 | 4 | 44472-0453 | 4 |
| 44472-0650 | 6 | 44472-0651 | 6 | 44472-0652 | 6 | 44472-0653 | 6 |
| 44472-0850 | 8 | 44472-0851 | 8 | 44472-0852 | 8 | 44472-0853 | 8 |
| 44472-1050 | 10 | 44472-1051 | 10 | 44472-1052 | 10 | 44472-1053 | 10 |
| 44472-1250 | 12 | 44472-1251 | 12 | 44472-1252 | 12 | 44472-1253 | 12 |
| 44472-1450 | 14 | 44472-1451 | 14 | 44472-1452 | 14 | 44472-1453 | 14 |
| 44472-1650 | 16 | 44472-1651 | 16 | 44472-1652 | 16 | 44472-1653 | 16 |
| 44472-1850 | 18 | 44472-1851 | 18 | 44472-1852 | 18 | 44472-1853 | 18 |
| 44472-2050 | 20 | 44472-2051 | 20 | 44472-2052 | 20 | 44472-2053 | 20 |
| 44472-2250 | 22 | 44472-2251 | 22 | 44472-2252 | 22 | 44472-2253 | 22 |
| 44472-2450 | 24 | 44472-2451 | 24 | 44472-2452 | 24 | 44472-2453 | 24 |

WITHOUT PEGS

| PLATING: | I (SEE NOTE 2) | PLATING: | I (SEE NOTE 2) | PLATING: | I (SEE NOTE 2) | PLATING: | I (SEE NOTE 2) |
|------------|---------------------|------------|---------------------|------------|------------------|------------|------------------|
| DRAINS: | WITHOUT DRAIN HOLES | DRAINS: | WITHOUT DRAIN HOLES | DRAINS: | WITH DRAIN HOLES | DRAINS: | WITH DRAIN HOLES |
| PEGS: | WITHOUT PEGS | PEGS: | WITHOUT PEGS | PEGS: | WITHOUT PEGS | PEGS: | WITHOUT PEGS |
| MAT'L: | 94V-2 [NATURAL] | MAT'L: | 94V-0 [NATURAL] | MAT'L: | 94V-2 [NATURAL] | MAT'L: | 94V-0 [NATURAL] |
| PACKAGING: | PK-5566-001 | PACKAGING: | PK-5566-001 | PACKAGING: | PK-5566-001 | PACKAGING: | PK-5566-001 |
| ITEM NO. | HOUSING NO. | CKTS | ITEM NO. | CKTS | ITEM NO. | CKTS | ITEM NO. |
| 44472-0254 | | 2 | 44472-0255 | 2 | 44472-0256 | 2 | 44472-0257 |
| 44472-0454 | | 4 | 44472-0455 | 4 | 44472-0456 | 4 | 44472-0457 |
| 44472-0654 | | 6 | 44472-0655 | 6 | 44472-0656 | 6 | 44472-0657 |
| 44472-0854 | | 8 | 44472-0855 | 8 | 44472-0856 | 8 | 44472-0857 |
| 44472-1054 | | 10 | 44472-1055 | 10 | 44472-1056 | 10 | 44472-1057 |
| 44472-1254 | | 12 | 44472-1255 | 12 | 44472-1256 | 12 | 44472-1257 |
| 44472-1454 | | 14 | 44472-1455 | 14 | 44472-1456 | 14 | 44472-1457 |
| 44472-1654 | | 16 | 44472-1655 | 16 | 44472-1656 | 16 | 44472-1657 |
| 44472-1854 | | 18 | 44472-1855 | 18 | 44472-1856 | 18 | 44472-1857 |
| 44472-2054 | | 20 | 44472-2055 | 20 | 44472-2056 | 20 | 44472-2057 |
| 44472-2254 | | 22 | 44472-2255 | 22 | 44472-2256 | 22 | 44472-2257 |
| 44472-2454 | | 24 | 44472-2455 | 24 | 44472-2456 | 24 | 44472-2457 |

* ITEMS PRECEDED BY AN '*X' ARE NOT AVAILABLE.

| | | | | | | | | | |
|--|--------------------------------------|---------------------------------------|------------|--------------------|------------|---|--------------|------------------------|--|
| SEE SHEET 1 EC NO: UCP2072-1560 DRAWING NO: 2072/01/05 CHK'D: BELL APPR'D: SM/TH 2072/02/02 | QUALITY SYMBOLS ∇=0 ∇=0 ∇=0 | GENERAL TOLERANCES (UNLESS SPECIFIED) | | DIMENSION STYLE | | SCALE | DESIGN UNITS | THIRD ANGLE PROJECTION | |
| | | | | IN/MM | | 1:1 | METRIC | | |
| | | 4 PLACES ±--- | ±--- | DRAWN BY | DATE | TITLE | | | |
| | | 3 PLACES ±--- | ±.015 | GEP | 1994/07/25 | MINI-FIT VERT HDR ASSY W & W/O PEGS/DRAIN HOLES SINGLE AND DUAL ROW | | | |
| 2 PLACES ±0.38 | ±.020 | CHECKED BY | DATE | MOLEX INCORPORATED | | | | | |
| 1 PLACE ±0.50 | ±--- | RJF | 1994/07/25 | | | | | | |
| ANGULAR ±1/2° | | APPROVED BY | DATE | MATERIAL NO. | | DOCUMENT NO. | SHEET NO. | | |
| | | RJF | 1994/07/25 | | | SDA-44472-**** | 3 OF 8 | | |
| DRAFT WHERE APPLICABLE MUST REMAIN WITHIN DIMENSIONS | | | | SEE CHARTS | | THIS DRAWING CONTAINS INFORMATION THAT IS PROPRIETARY TO MOLEX INCORPORATED AND SHOULD NOT BE USED WITHOUT WRITTEN PERMISSION | | | |



DUAL ROW PART NUMBERS WITH SELECT GOLD PLATING

WITH PEGS

Table with columns for PLATING, DRAINS, PEGS, MAT'L, PACKAGING, ITEM NO., and CKTS. It lists various part numbers like 44472-0260, 44472-0460, etc., with their respective specifications.

WITHOUT PEGS

Table with columns for PLATING, DRAINS, PEGS, MAT'L, PACKAGING, ITEM NO., and CKTS. It lists various part numbers like 44472-0264, 44472-0464, etc., with their respective specifications.

* ITEMS PRECEDED BY A 'X' ARE NOT AVAILABLE.

Technical drawing header containing: SEE SHEET 1, EC NO: UCP2072-1560, DIMENSION STYLE IN/MM, SCALE 1:1, DESIGN UNITS METRIC, THIRD ANGLE PROJECTION, GENERAL TOLERANCES, DIMENSION STYLE, SCALE, DESIGN UNITS, THIRD ANGLE PROJECTION, TITLE: MINI-FIT VERT HDR ASSY W & W/O PEGS/DRAIN HOLES SINGLE AND DUAL ROW, MOLEX INCORPORATED, SEE CHARTS, SDA-44472-****, SHEET NO. 4 OF 8.

DUAL ROW PART NUMBERS WITH WIDE LATCH OPTION

WITH PEGS

| | |
|------------|------------------|
| PLATING: | I (SEE NOTE 2) |
| DRAINS: | WITH DRAIN HOLES |
| PEGS: | WITH PEGS |
| MAT'L: | 94V-2 [NATURAL] |
| PACKAGING: | PK-5566-001 |

| | ITEM NO. | CKTS |
|---|------------|------|
| X | 44472-0270 | 2 |
| X | 44472-0470 | 4 |
| X | 44472-0670 | 6 |
| X | 44472-0870 | 8 |
| X | 44472-1070 | 10 |
| X | 44472-1270 | 12 |
| X | 44472-1470 | 14 |
| X | 44472-1670 | 16 |
| X | 44472-1870 | 18 |
| X | 44472-2070 | 20 |
| X | 44472-2270 | 22 |
| | 44472-2470 | 24 |

* ITEMS PRECEDED BY 'X' ARE NOT AVAILABLE.

| | | | | | | | | | |
|--|---------------------|---------------------------------------|------------|--------------------|----------------|---|--------------|------------------------|--|
| SEE SHEET 1 EC NO: UCP2072-1560 DRAWING NO: 2017/01/05 CHKD: BELL APPR: SMITH DATE: 2017/02/02 | QUALITY SYMBOLS | GENERAL TOLERANCES (UNLESS SPECIFIED) | | DIMENSION STYLE | | SCALE | DESIGN UNITS | THIRD ANGLE PROJECTION | |
| | | | | IN/MM | | 1:1 | METRIC | | |
| | | 4 PLACES ± --- | ± --- | DRAWN BY | DATE | TITLE | | | |
| | | 3 PLACES ± --- | ± .015 | GEP | 1994/07/25 | MINI-FIT VERT HDR ASSY W & W/O PEGS/DRAIN HOLES SINGLE AND DUAL ROW | | | |
| 2 PLACES ± 0.38 | ± .020 | CHECKED BY | DATE | MOLEX INCORPORATED | | | | | |
| 1 PLACE ± 0.50 | ± --- | RJF | 1994/07/25 | | | | | | |
| ANGULAR ± 1/2° | | APPROVED BY | DATE | MATERIAL NO. | DOCUMENT NO. | SHEET NO. | | | |
| DRAFT WHERE APPLICABLE MUST REMAIN WITHIN DIMENSIONS | | RJF | 1994/07/25 | SEE CHART | SDA-44472-**** | 5 OF 8 | | | |
| SIZE C THIS DRAWING CONTAINS INFORMATION THAT IS PROPRIETARY TO MOLEX INCORPORATED AND SHOULD NOT BE USED WITHOUT WRITTEN PERMISSION | | | | | | | | | |

SINGLE ROW PART NUMBERS WITH PEGS

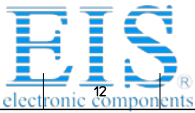
MATTE TIN PLATING

| PLATING: 1 (SEE NOTE 2) | | PLATING: 1 (SEE NOTE 2) | | PLATING: 1 (SEE NOTE 2) | | PLATING: 1 (SEE NOTE 2) | |
|--------------------------|------|--------------------------|------|-----------------------------|------|-----------------------------|------|
| DRAINS: WITH DRAIN HOLES | | DRAINS: WITH DRAIN HOLES | | DRAINS: WITHOUT DRAIN HOLES | | DRAINS: WITHOUT DRAIN HOLES | |
| PEGS: WITH PEGS | | PEGS: WITH PEGS | | PEGS: WITH PEGS | | PEGS: WITH PEGS | |
| MAT'L: 94V-2 [NATURAL] | | MAT'L: 94V-0 [NATURAL] | | MAT'L: 94V-2 [NATURAL] | | MAT'L: 94V-0 [NATURAL] | |
| PACKAGING: PK-5566-002 | | PACKAGING: PK-5566-002 | | PACKAGING: PK-5566-002 | | PACKAGING: PK-5566-002 | |
| ITEM NO. | CKTS | ITEM NO. | CKTS | ITEM NO. | CKTS | ITEM NO. | CKTS |
| X 44472-0401 | 4 X | 44472-0402 | 4 | 44472-0403 | 4 X | 44472-0404 | 4 |
| X 44472-0501 | 5 | 44472-0502 | 5 X | 44472-0503 | 5 | 44472-0504 | 5 |
| X 44472-0601 | 6 X | 44472-0602 | 6 X | 44472-0603 | 6 X | 44472-0604 | 6 |
| X 44472-0701 | 7 X | 44472-0702 | 7 X | 44472-0703 | 7 X | 44472-0704 | 7 |
| X 44472-0801 | 8 X | 44472-0802 | 8 X | 44472-0803 | 8 X | 44472-0804 | 8 |
| X 44472-0901 | 9 X | 44472-0902 | 9 X | 44472-0903 | 9 X | 44472-0904 | 9 |
| X 44472-1001 | 10 X | 44472-1002 | 10 X | 44472-1003 | 10 X | 44472-1004 | 10 |
| X 44472-1101 | 11 X | 44472-1102 | 11 X | 44472-1103 | 11 X | 44472-1104 | 11 |
| X 44472-1201 | 12 X | 44472-1202 | 12 X | 44472-1203 | 12 X | 44472-1204 | 12 |

GOLD PLATING

| PLATING: 2 (SEE NOTE 2) | | PLATING: 2 (SEE NOTE 2) | | PLATING: 2 (SEE NOTE 2) | | PLATING: 2 (SEE NOTE 2) | |
|----------------------------|------|-----------------------------|------|-----------------------------|------|-----------------------------|------|
| DRAINS: WITHOUT DRAIN HOLE | | DRAINS: WITHOUT DRAIN HOLES | | DRAINS: WITHOUT DRAIN HOLES | | DRAINS: WITHOUT DRAIN HOLES | |
| PEGS: WITH PEGS | | PEGS: WITH PEGS | | PEGS: WITH PEGS | | PEGS: WITH PEGS | |
| MAT'L: 94V-2 [NATURAL] | | MAT'L: 94V-0 [NATURAL] | | MAT'L: 94V-2 [NATURAL] | | MAT'L: 94V-0 [NATURAL] | |
| PACKAGING: PK-5566-002 | | PACKAGING: PK-5566-002 | | PACKAGING: PK-5566-002 | | PACKAGING: PK-5566-002 | |
| ITEM NO. | CKTS | ITEM NO. | CKTS | ITEM NO. | CKTS | ITEM NO. | CKTS |
| | 4 | 44472-0407 | 4 X | 44472-0408 | 4 | | |
| | 5 | 44472-0507 | 5 X | 44472-0508 | 5 | | |
| | 6 | 44472-0607 | 6 X | 44472-0608 | 6 | | |
| | 7 | 44472-0707 | 7 X | 44472-0708 | 7 | | |
| | 8 | 44472-0807 | 8 X | 44472-0808 | 8 | | |
| | 9 | 44472-0907 | 9 X | 44472-0908 | 9 | | |
| | 10 | 44472-1007 | 10 X | 44472-1008 | 10 | | |
| | 11 | 44472-1107 | 11 X | 44472-1108 | 11 | | |
| | 12 | 44472-1207 | 12 X | 44472-1208 | 12 | | |

| | | | | | | | | | |
|--|--------------------------------------|---------------------------------------|--|---|--|--|--------------|------------------------|--|
| SEE SHEET 1 EC NO: UCP2072-1560 DRAWING/REV: 2017/01/05 CHKD: J.BELL APPR: SM/TH 2017/02/02 | QUALITY SYMBOLS ∇=0 ∇=0 ∇=0 | GENERAL TOLERANCES (UNLESS SPECIFIED) | | DIMENSION STYLE | | SCALE | DESIGN UNITS | THIRD ANGLE PROJECTION | |
| | | | | IN/MM | | 1:1 | METRIC | | |
| | | 4 PLACES ± --- ± --- | | DRAWN BY DATE | | TITLE MINI-FIT VERT HDR ASSY W & W/O PEGS/DRAIN HOLES SINGLE AND DUAL ROW | | | |
| | | 3 PLACES ± --- ± 0.15 | | GEP 1994/07/25 | | | | | |
| 2 PLACES ± 0.38 ± 0.20 | | CHECKED BY DATE | | MOLEX INCORPORATED SDA-44472-**** | | | | | |
| 1 PLACE ± 0.50 ± --- | | R.J.F 1994/07/25 | | | | | | | |
| ANGULAR ± 1/2° | | APPROVED BY DATE | | SHEET NO. 6 OF 8 | | | | | |
| | | R.J.F 1994/07/25 | | | | | | | |
| DRAFT WHERE APPLICABLE MUST REMAIN WITHIN DIMENSIONS | | MATERIAL NO. | | SEE CHART | | | | | |
| | | SIZE | | THIS DRAWING CONTAINS INFORMATION THAT IS PROPRIETARY TO MOLEX INCORPORATED AND SHOULD NOT BE USED WITHOUT WRITTEN PERMISSION | | | | | |



DUAL ROW PART NUMBERS 1 PEG REMOVED

| PLATING: | I (SEE NOTE 2) | PLATING: | I (SEE NOTE 2) | PLATING: | | PLATING: | |
|--------------|---------------------|--------------|------------------|------------|----------------|------------|----------------|
| DRAINS: | WITHOUT DRAIN HOLES | DRAINS: | WITH DRAIN HOLES | DRAINS: | | DRAINS: | |
| PEGS: | PEG #1 REMOVED | PEGS: | PEG #1 REMOVED | PEGS: | PEG #1 REMOVED | PEGS: | PEG #1 REMOVED |
| MAT'L: | 92V-2 (NATURAL) | MAT'L: | 92V-2 (NATURAL) | MAT'L: | | MAT'L: | |
| PACKAGING: | PK-5566-001 | PACKAGING: | PK-5566-001 | PACKAGING: | | PACKAGING: | |
| ITEM NO. | CKTS | ITEM NO. | CKTS | ITEM NO. | CKTS | ITEM NO. | CKTS |
| X 44472-0273 | 2 | X 44472-0274 | 2 | | 2 | | 2 |
| X 44472-0473 | 4 | X 44472-0474 | 4 | | 4 | | 4 |
| X 44472-0673 | 6 | X 44472-0674 | 6 | | 6 | | 6 |
| X 44472-0873 | 8 | X 44472-0874 | 8 | | 8 | | 8 |
| X 44472-1073 | 10 | X 44472-1074 | 10 | | 10 | | 10 |
| X 44472-1273 | 12 | X 44472-1274 | 12 | | 12 | | 12 |
| X 44472-1473 | 14 | X 44472-1474 | 14 | | 14 | | 14 |
| X 44472-1673 | 16 | X 44472-1674 | 16 | | 16 | | 16 |
| X 44472-1873 | 18 | X 44472-1874 | 18 | | 18 | | 18 |
| X 44472-2073 | 20 | X 44472-2074 | 20 | | 20 | | 20 |
| X 44472-2273 | 22 | X 44472-2274 | 22 | | 22 | | 22 |
| X 44472-2473 | 24 | X 44472-2474 | 24 | | 24 | | 24 |

| PLATING: | I (SEE NOTE 2) | PLATING: | I (SEE NOTE 2) | PLATING: | | PLATING: | |
|--------------|---------------------|--------------|------------------|------------|----------------|------------|----------------|
| DRAINS: | WITHOUT DRAIN HOLES | DRAINS: | WITH DRAIN HOLES | DRAINS: | | DRAINS: | |
| PEGS: | PEG #2 REMOVED | PEGS: | PEG #2 REMOVED | PEGS: | PEG #2 REMOVED | PEGS: | PEG #2 REMOVED |
| MAT'L: | 92V-2 (NATURAL) | MAT'L: | 92V-2 (NATURAL) | MAT'L: | | MAT'L: | |
| PACKAGING: | PK-5566-001 | PACKAGING: | PK-5566-001 | PACKAGING: | | PACKAGING: | |
| ITEM NO. | CKTS | ITEM NO. | CKTS | ITEM NO. | CKTS | ITEM NO. | CKTS |
| X 44472-0277 | 2 | X 44472-0278 | 2 | | 2 | | 2 |
| X 44472-0477 | 4 | X 44472-0478 | 4 | | 4 | | 4 |
| X 44472-0677 | 6 | X 44472-0678 | 6 | | 6 | | 6 |
| X 44472-0877 | 8 | X 44472-0878 | 8 | | 8 | | 8 |
| X 44472-1077 | 10 | X 44472-1078 | 10 | | 10 | | 10 |
| X 44472-1277 | 12 | X 44472-1278 | 12 | | 12 | | 12 |
| X 44472-1477 | 14 | X 44472-1478 | 14 | | 14 | | 14 |
| X 44472-1677 | 16 | X 44472-1678 | 16 | | 16 | | 16 |
| X 44472-1877 | 18 | X 44472-1878 | 18 | | 18 | | 18 |
| X 44472-2077 | 20 | X 44472-2078 | 20 | | 20 | | 20 |
| X 44472-2277 | 22 | X 44472-2278 | 22 | | 22 | | 22 |
| X 44472-2477 | 24 | X 44472-2478 | 24 | | 24 | | 24 |

* ITEMS PRECEDED BY AN 'X' ARE NOT AVAILABLE

| | | | | | | | | | |
|--|--------------------------------------|--|----------------------|---|--|--|------------------------|------------------------|--|
| SEE SHEET 1 EC NO: UCP2072-560 DRAWING NO: 2072/01/05 CHKD: BELL APPR: SMTH DATE: 2017/02/02 | QUALITY SYMBOLS ∇=0 ∇=0 ∇=0 | GENERAL TOLERANCES (UNLESS SPECIFIED) mm INCH | | DIMENSION STYLE IN/MM | | SCALE 1:1 | DESIGN UNITS METRIC | THIRD ANGLE PROJECTION | |
| | | 4 PLACES ± --- ± --- | DRAWN BY GEP | DATE 1994/07/25 | | TITLE MINI-FIT VERT HDR ASSY W & W/O PEGS/DRAIN HOLES SINGLE AND DUAL ROW | | | |
| | | 3 PLACES ± --- ± .015 | CHECKED BY R J F | DATE 1994/07/25 | | MOLEX INCORPORATED | | | |
| | | 2 PLACES ± 0.38 ± .020 1 PLACE ± 0.50 ± --- ANGULAR ± 1/2° | APPROVED BY R J F | DATE 1994/07/25 | | MATERIAL NO. SDA-44472-**** DOCUMENT NO. | | | |
| DRAFT WHERE APPLICABLE MUST REMAIN WITHIN DIMENSIONS | | SEE CHART | | THIS DRAWING CONTAINS INFORMATION THAT IS PROPRIETARY TO MOLEX INCORPORATED AND SHOULD NOT BE USED WITHOUT WRITTEN PERMISSION | | SHEET NO. 7 OF 8 | | | |

DUAL ROW PART NUMBERS WITH MATTE TIN PLATING
(DO NOT USE FOR NEW APPLICATIONS)

| WITH PEGS | | | |
|------------|------------------|---|------|
| PLATING: | 1 (SEE NOTE 2) | | |
| DRAINS: | WITH DRAIN HOLES | | |
| PEGS: | WITH PEGS | | |
| MAT'L: | 94V-0 (NATURAL) | | |
| PACKAGING: | | | |
| | ITEM NO. | | CKTS |
| | 44472-0283 | 0 | 2 |
| | 44472-0483 | 0 | 4 |
| | 44472-0683 | 0 | 6 |
| | 44472-0883 | | 8 |
| | 44472-1083 | 0 | 10 |
| | 44472-1283 | 0 | 12 |
| | 44472-1483 | 0 | 14 |
| | 44472-1683 | 0 | 16 |
| | 44472-1883 | 0 | 18 |
| | 44472-2083 | | 20 |
| | 44472-2283 | | 22 |
| | 44472-2483 | 0 | 24 |
| | | | |
| | | | |

'0' = OBSOLETE

| | | | | | | | | | | |
|--|---|--------------------------------------|---------------------------------------|--------------------|-----------------|------------|--|--------------|------------------------|--|
| SEE SHEET 1 EC NO: UCP2072-1560 DRAWING NO: 2072/01/05 CHKD: BELL APPR: SMITH M | DESCRIPTION 2072/01/05 2072/02/02 | QUALITY SYMBOLS ▽=0 ▽=0 ▽=0 | GENERAL TOLERANCES (UNLESS SPECIFIED) | | DIMENSION STYLE | | SCALE | DESIGN UNITS | THIRD ANGLE PROJECTION | |
| | | | | | IN/MM | | 1:1 | METRIC | | |
| | | | 4 PLACES ±--- | ±--- | DRAWN BY | DATE | TITLE MINI-FIT VERT HDR ASSY W & W/O PEGS/DRAIN HOLES SINGLE AND DUAL ROW | | | |
| | | | 3 PLACES ±--- | ±.015 | GEP | 1994/07/25 | | | | |
| 2 PLACES ±0.38 | ±.020 | CHECKED BY | DATE | MOLEX INCORPORATED | | | | | | |
| 1 PLACE ±0.50 | ±--- | RJF | 1994/07/25 | | | | | | | |
| ANGULAR ±1/2° | | APPROVED BY | DATE | MATERIAL NO. | DOCUMENT NO. | SHEET NO. | | | | |
| DRAFT WHERE APPLICABLE MUST REMAIN WITHIN DIMENSIONS | | RJF | 1994/07/25 | SEE CHART | SDA-44472-**** | 8 OF 8 | | | | |
| SIZE C THIS DRAWING CONTAINS INFORMATION THAT IS PROPRIETARY TO MOLEX INCORPORATED AND SHOULD NOT BE USED WITHOUT WRITTEN PERMISSION | | | | | | | | | | |