

## Excellent Integrated System Limited

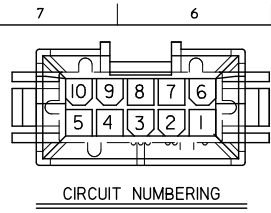
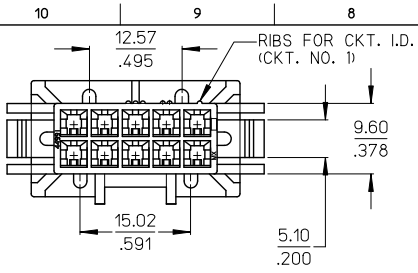
Stocking Distributor

Click to view price, real time Inventory, Delivery & Lifecycle Information:

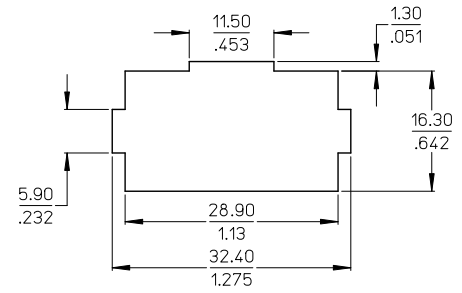
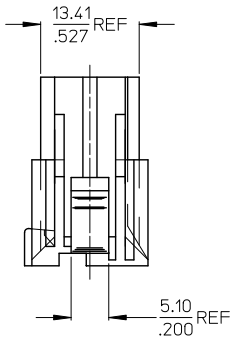
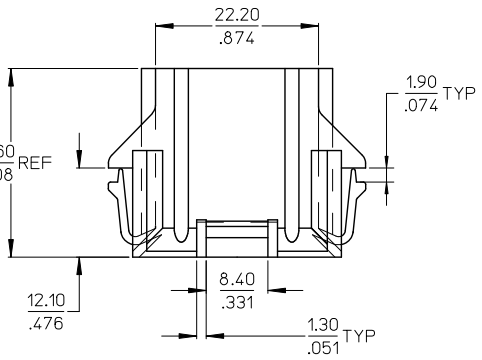
[Molex Connector Corporation](#)  
[0449910001](#)

For any questions, you can email us directly:

[sales@integrated-circuit.com](mailto:sales@integrated-circuit.com)

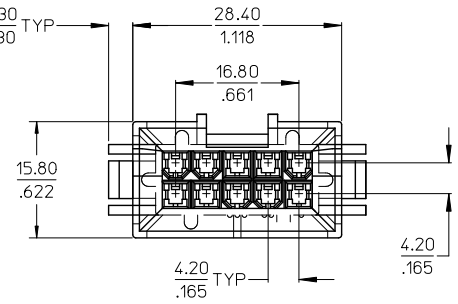


- NOTES:
1. MATERIALS: NYLON (PA6/6, UNFILLED, UL94V-0, COLOR: NATURAL)
  2. FINISHES: NONE
  3. PRODUCT SPECIFICATION: PS-5566-002.
  4. PACKAGING SPECIFICATION: PK-42474-001.
  5. MATES WITH: MOLEX RECEPTACLES 5557, 42385 AND 42474.
  6. CIRCUIT NUMBERS 3 AND 8 ARE DESIGNED TO PROVIDE MATE FIRST/BREAK LAST FUNCTION.
  7. TO BE USED WITH 5558 OR 44478 MINI-FIT JR. MALE CRIMP TERMINALS.
  8. WIRES ARE TO BE DRESSED IN SUCH A MANNER AS TO ALLOW TERMINALS TO FLOAT FREELY IN THE POCKET.
  9. PART ALLOWS FOR UP TO 2.54/.100 MISALIGNMENT WITH MATING RECEPTACLE IN ANY DIRECTION. SEE MATING CONNECTOR DRAWINGS FOR SPECIFIC ALLOWANCES.
  10. CONNECTOR ASSEMBLIES ARE NOT TO BE MATED OR UNMATED WHILE CIRCUITS ARE LIVE.
  11. PANEL CUT-OUT TO BE PUNCHED IN THE SAME DIRECTION AS CONNECTOR INSERTION.
  12. THIS PART CONFORMS TO CLASS B REQUIREMENTS OF COSMETIC SPEC PS-45499-002.



**RECOMMENDED PANEL CUTOUT**

PANEL THICKNESS: 1.60 / .063



CORRECT 15.8MM DIM EC NO: UCP2010-2315 DRAWN BY: DRW:BARBERSON 2010/03/10 CHECKED BY: CHKD: BELL 2010/03/11 APPROVED BY: APPR: SMITH 2010/03/12 DESCRIPTION:	QUALITY SYMBOLS	GENERAL TOLERANCES (UNLESS SPECIFIED)	DIMENSION STYLE	SCALE	DESIGN UNITS	THIRD ANGLE PROJECTION
	▽=0	mm INCH	MM/IN	2:1	METRIC	☉
	▽=0	4 PLACES ± --- ± ---	DRAWN BY: COMERC I DATE: 06-12-01	TITLE: PLUG HOUSING, 10 CIRCUIT #3,#8 MATE FIRST/BRK LST MINI FIT JR.	MOLEX INCORPORATED	
	▽=0	3 PLACES ± --- ± ---	CHECKED BY: COMERC I DATE: 06-12-01	MATERIAL NO. 449910001	DOCUMENT NO. SD-44991-001	SHEET NO. 1 OF 1
▽=0	2 PLACES ± 0.20 ± .008	1 PLACE ± 0.20 ± .008	APPROVED BY: FSMITH DATE: 2010/03/12	THIS DRAWING CONTAINS INFORMATION THAT IS PROPRIETARY TO MOLEX INCORPORATED AND SHOULD NOT BE USED WITHOUT WRITTEN PERMISSION		
▽=0	ANGULAR ±1/2°		SIZE B			
DRAFT WHERE APPLICABLE MUST REMAIN WITHIN DIMENSIONS						