

Excellent Integrated System Limited

Stocking Distributor

Click to view price, real time Inventory, Delivery & Lifecycle Information:

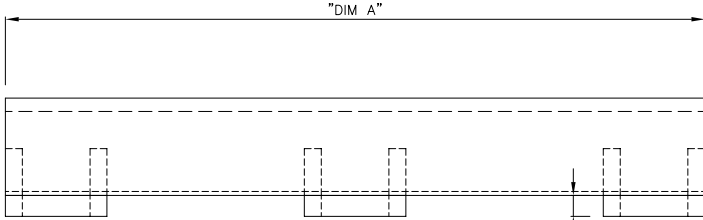
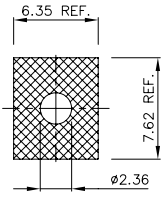
[FCI](#)
[89628-029](#)

For any questions, you can email us directly:
sales@integrated-circuit.com

PRODUCT NUMBER 89628-XXX

KEEP OUT AREA ON BOARD FOR STIFFENER/INSERT ATTACHMENT.

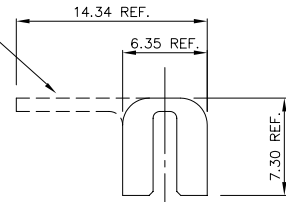
TAIL-PROTECT OPTION (SEE CHART ON PAGE 2)



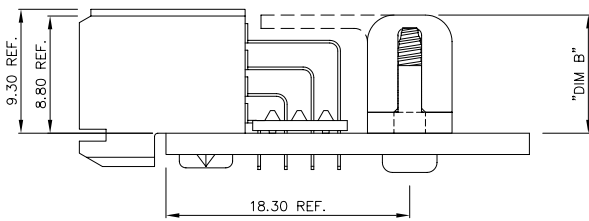
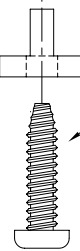
INSERTS SHOWN INSTALLED IN POSITION SEE NOTE BELOW

"DIM C" CLEARANCE FOR WASHOUT

NOTE: THIS PRODUCT COMES AS A KIT AND IS UNASSEMBLED. SEE CHART ON PAGE TWO FOR MORE INFORMATION.



TORX(tm) SELF-TAPPING SCREW. REQUIRES A #2 TORX(tm) DRIVER



mat'l. code				surface	tolerance	projection	product family
-----				ISO 1302	ISO 406	ISO 1101	METRAL (tm)
ltr	ecn	nd	dr	date	tolerances unless otherwise specified	mm	title
K	v22878	SCS		10/21/92	angles	xx ±.01/.3	BOARD STIFFENER ASSEMBLY
L	v23674	SCS		12/15/92	linear	xxx ±.005/.13	
M	v30017	SCS		1/12/93	α±2	xxxx ±.0020/.050	89628
N	v41850	SCS	12/01/94	dr	STU STONER	9/15/90	
P	v50964	SCS	7/31/95	enagr	R. DOUTRICH	9/15/90	A3
R	v70347	MDF	3/04/97	chr	STU STONER	9/15/90	
S	m06-0286	MNR	7/27/06	appd	STU STONER	9/15/90	type Product Customer Drawing
sheet	revisor	s	s				
index	sheet	1	2				

PRODUCT NUMBER	"DIM A" ±.70/.030 MM/IN	"DIM B"	"DIM C"	NUMBER OF INSERTS	NUMBER OF SCREWS	TAIL-PROTECT OPTION
89628-001	240/9.50	8.80/.345	1.5/.060	5	5	NO
89628-002	252/9.92	8.80/.345	1.5/.060	5	5	YES
89628-003	252/9.92	8.80/.345	1.5/.060	5	5	NO
89628-004	139.4/5.490	8.80/.345	1.5/.060	3	3	YES
89628-005	229.87/9.05	8.80/.345	1.5/.060	5	5	NO
89628-006	255.27/10.05	8.80/.345	1.5/.060	6	6	NO
89628-007	280.67/11.05	8.80/.345	1.5/.060	6	6	NO
89628-008	306.07/12.05	8.80/.345	1.5/.060	7	7	NO
89628-009	339.09/13.35	8.80/.345	1.5/.060	7	7	NO
89628-010	369.57/14.55	8.80/.345	1.5/.060	8	8	NO
89628-011	392.43/15.45	8.80/.345	1.5/.060	8	8	NO
89628-012	415.29/16.35	8.80/.345	1.5/.060	9	9	NO
89628-013	368/14.48	8.80/.345	1.5/.060	3	3	YES
89628-014	120/4.72	8.80/.345	1.5/.060	3	3	YES
89628-015	120/4.72	8.80/.345	1.5/.060	3	3	NO
89628-016	219.4/8.64	8.80/.345	1.5/.060	3	3	YES
89628-017	521/20.51	8.80/.345	1.5/.060	5	5	YES
89628-018	183/7.20	8.80/.345	1.5/.060	3	3	YES
89628-019	63.50/2.50	8.80/.345	1.5/.060	2	2	YES
89628-020	280.67/11.05	8.80/.345	1.5/.060	3	3	YES
89628-021	339.09/13.35	8.80/.345	1.5/.060	3	3	YES
89628-022	207/8.15	8.80/.345	1.5/.060	3	3	YES
89628-023	267/10.51	8.80/.345	1.5/.060	3	3	YES
89628-024	180/7.08	8.80/.345	1.5/.060	3	3	YES
89628-025	192/7.56	8.80/.345	1.5/.060	3	3	YES
89628-026	240/9.45	8.80/.345	1.5/.060	3	3	YES
89628-027	219.4/8.64	8.80/.345	1.5/.060	5	5	NO
89628-028	360.70/14.20	8.80/.345	1.5/.060	4	4	NO
89628-029	204/8.03	8.80/.345	1.5/.060	5	5	NO
89628-030	450/17.71	8.80/.345	1.5/.060	9	9	NO
89628-031	207/8.15	8.80/.345	1.5/.060	3	3	NO

mat'l. code		surface	tolerance	projection	product family
-----		ISO 1302	ISO 406		METRAL (tm)
ISO 1101		tolerances unless otherwise specified	ISO 1101	mm	title
ltr	ecr	nd	dr	date	BOARD STIFFENER ASSEMBLY
S					scale 1:1
		angles	linear	xx ±.01/.3	dwg no
		0±7		xxx ±.005/.13	89628
		dr	STU STONER	9/15/90	sheet 2 of 2
		engr	R. DOUTRICH	9/15/90	A3
		chr	STU STONER	9/15/90	type
		appd	STU STONER	9/15/90	Product Customer Drawing
sheet index	revisor	sheet			