



Distributor of FCI: Excellent Integrated System Limited

Datasheet of D50P24A6PA00LF - D-Sub Connector Plug, Male Pins 50 Position Through Hole Solder

Contact us: sales@integrated-circuit.com Website: www.integrated-circuit.com

Excellent Integrated System Limited

Stocking Distributor

Click to view price, real time Inventory, Delivery & Lifecycle Information:

[FCI](#)

[D50P24A6PA00LF](#)

For any questions, you can email us directly:

sales@integrated-circuit.com

Contact us: sales@integrated-circuit.com Website: www.integrated-circuit.com

A

B

C

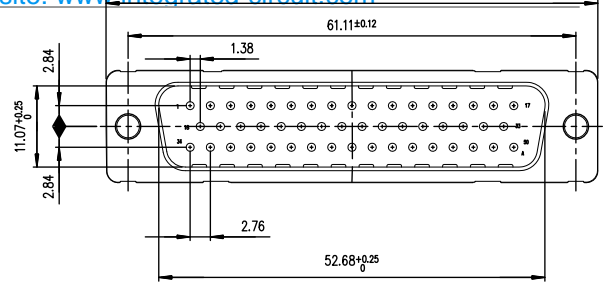
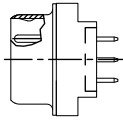
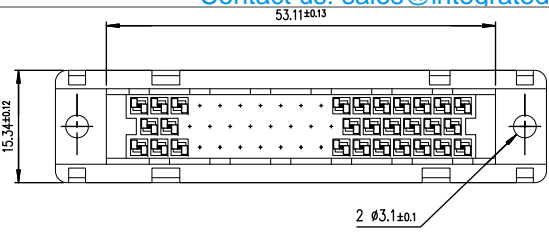
D

A

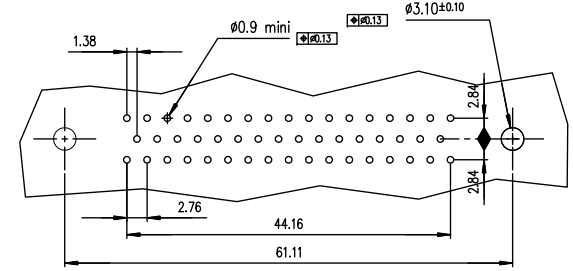
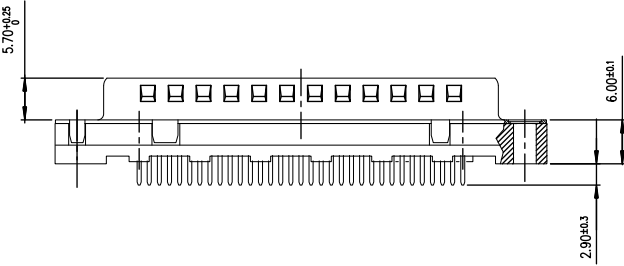
B

C

D



PC card drilling dimensions
(after plating - thickness: 1.60 mm)



REQUIREMENTS

Technical characteristics:
 Shell: steel tin plated
 Insulators: self-extinguishing thermoplastic UL94V-0
 Contacts: size 25 phosphor bronze, gold on mating end, bright tin lead on termination and over nickel on entire contact
 Cycles: >500 for plating 6
 >200 for plating 4
 gauge retention force: 0.20N mini

PLATING 4 = FLASH AU
 PLATING 6 = 0.76 µ AU

Part number: D50P24A*PA00

Electrical characteristics:

max. current rating: 5A
 Test voltage: 1000V
 Rated voltage: 300V
 Contact resistance: $510m\Omega$
 Shell resistance: $510m\Omega$
 Insulator resistance: >500M Ω

Climate characteristics:

Operating temperature range: -55° +125°
 Dimensions:
 In accordance with MIL-C-24308C and DIN41682

rev	ecn no	dr	date
B	-	MLE	1995/05/09
C	LS06-0208	LGO	2006/12/12
-	-	-	-
-	-	-	-
-	-	-	-

www.fciconnect.com		surface	tolerance std	projection	European Views	
		ISO 1302	ISO 406 ISO 1101		mm	
TOLERANCES UNLESS OTHERWISE SPECIFIED						
Dr	LENOIR	1996/04/24	ANGULAR	0.X	±0.1	size A3 Scale 2
Eng	LENOIR	1996/04/24	LINEAR	0.XX	±0.1	
Chr	M PESSON	1996/04/24	0.XX ± 2	0.XXX	±0.1	ECN LS06-0208
Appr	M PESSON	1996/04/24	Product family	D-SUB	Spec ref	-
FCI title		MALE CONNECTOR DELTA D 50, STD EUROPE		Rev.	C	
catalog no		straight-solder type		Part no	C01-8646-0252	
				CUSTOMER	sheet 1 of 1	

Copyright FCI