

Excellent Integrated System Limited

Stocking Distributor

Click to view price, real time Inventory, Delivery & Lifecycle Information:

[FCI](#)
[HM1L51LFP000H6PLF](#)

For any questions, you can email us directly:

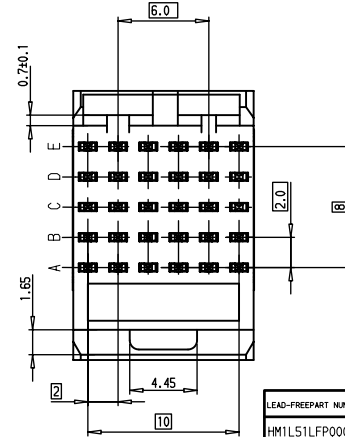
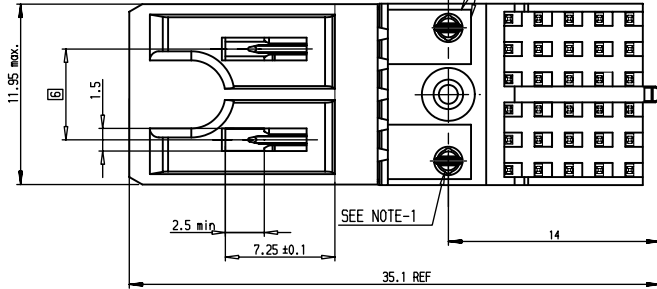
sales@integrated-circuit.com

GENERAL CHARACTERISTICS AND ROHS INFORMATIONS:

See PRODUCT SPECIFICATION: 65-12-446

- NOTE-1: SPRING PEGS WITH LOW INSERTION FORCE <20 N PER MODULE
RETENTION FORCE > 10 N PER MODULE
NOTE-2: USE EXISTING CABLE TO BOARD CODING KEYS
NOTE-3: PLATING ON MATING PART, SEE PRODUCT SPEC: 65-12-446
NOTE-4: PRODUCT MARKING = PRODUCT PART NUMBER + FCI+DATE CODE
NOTE-5: TRUE POS CONTROL WITH GRID GAUGE Ø0.65 ± WEIGHT 10 N
TRUE POS TOLERANCES ACCORDING TO MOUNTING RANGE = ±0.35 (X AND Y)
NOTE-6: CENTRAL WALL WITH END REAR SUPPORT
NOTE-7: VIDEO REFERENCING ON LISIBLE+ACCURATE SHARP PLASTIC EDGES
NOTE-8: IF SUFFIX "P" IS ADDED PACKAGING IS TRAYS,
BUT MARKING WILL BE WHITOUT "P"
Example P/N: HM1L51LFP000H6PLF, Marking: HM1L51LFP0006LF

VIDEO REFERENCING
SEE NOTE-7



LEAD-FREE PART NUMBER	PERFORMANCE LEVEL
HM1L51LFP000H6PLF	STANDARD P/N, See Prod. Spec 65-12-446
HM1L51LFP000H6PLF	CUSTOMER SPECIAL, Specific Plating

European Views

rev	ecm no	dr	date
A	LS07-0163	DVE	2007/06/11
-	-	-	-
-	-	-	-
-	-	-	-
-	-	-	-
-	-	-	-
-	-	-	-
-	-	-	-
-	-	-	-

www.fciconnect.com		surface	ISO 1302	tolerance std	ISO 406 ISO 1101	projection	mm
		TOLERANCES UNLESS OTHERWISE SPECIFIED					
Dr	VERITE	2007/06/11	ANGULAR	0.X	±0.1	size	Scale
Eng	VERITE	2007/06/11	LINEAR	0.XX	±0.1	A3	4
Chr	LEGARE	2007/06/11	0.XX ±2	0.XXX	±0.1	ECN	LS07-0163
Appr	LEGARE	2007/06/11	Product family		METRAL		Spec ref -
FCI		METRAL RA HDR PIP CONVERG		2		C-8626-11320-1	
title		WB 5x6-without HDF		2		Rev.	
catalog no				2		CUSTOMER sheet 1 of 3	

PDM: Rev:A STATUS: Released Printed: May 19, 2011

REV F - 2008-04-17

1

2

3

4

5

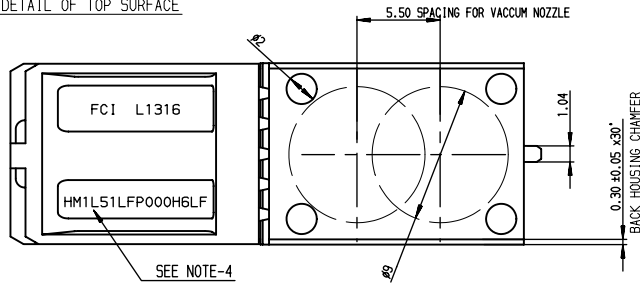
A

B

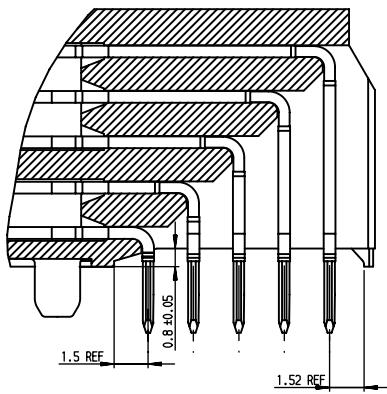
C

D

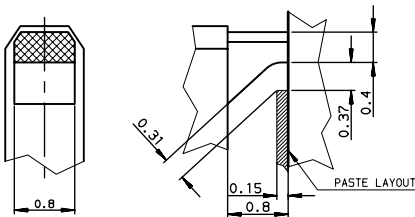
DETAIL OF TOP SURFACE



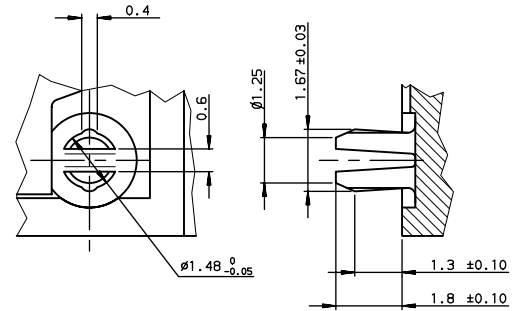
DETAIL OF STAND-OFF SCALE- 6/1



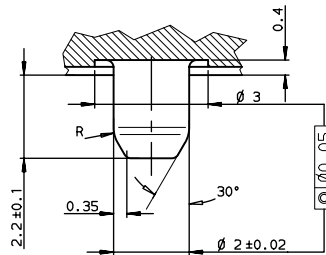
DETAIL OF REAR SUPPORT SCALE-20/1



DETAIL OF RETENTION PEGS (2x) SCALE 10/1



DETAIL OF CENTRAL PEG SCALE 10/1



European Views

www.fciconnect.com		surface	ISO 1302	tolerance std	ISO 406 ISO 1101	projection	mm
		TOLERANCES UNLESS OTHERWISE SPECIFIED					
Dr	VERITE	2007/06/11	ANGULAR	0.X	±0.1	size	Scale
Eng	VERITE	2007/06/11	LINEAR	0.XX	±0.1	A3	4
Chr	LEGARE	2007/06/11	0.XX' ±2'	0.XXX'	±0.1	ECN	LS07-0163
Appr	LEGARE	2007/06/11	Product family		METRAL	Spec ref	-
FCI		METRAL RA HDR PIP CONVERG		2	C-8626-11320-2		Rev.
title		WB 5x6-without HDF		2			A
catalog no					CUSTOMER		sheet 2 of 3

3PDM: Rev:A

STATUS: Released

Printed: May 19, 2011

REV F - 2008-04-17

1

2

D

A

B

C

D

A

B

C

D

A

B

C

D

A

B

C

D

A

B

C

D

A

B

C

D

A

B

C

D

A

B

C

D

A

B

C

D

A

B

C

D

A

B

C

D

A

B

C

D

A

B

C

D

A

B

C

D

A

B

C

D

A

B

C

D

A

B

C

D

A

B

C

D

A

B

C

D

A

B

C

D

A

B

C

D

A

B

C

D

A

B

C

D

A

B

C

D

A

B

C

D

A

B

C

D

A

B

C

D

A

B

C

D

A

B

C

D

A

B

C

D

A

B

C

D

A

B

C

D

A

B

C

D

A

B

C

D

A

B

C

D

A

B

C

D

A

B

C

D

A

B

C

D

A

B

C

D

A

B

C

D

A

B

C

D

A

B

C

D

A

B

C

D

A

B

C

D

A

B

C

D

A

B

C

D

A

B

C

D

A

B

C

D

A

B

C

D

A

B

C

D

A

B

C

D

A

B

C

D

A

B

C

D

A

B

C

D

A

B

C

D

A

B

C

D

A

B

C

D

A

B

C

D

A

B

C

D

A

B

C

D

A

B

C

D

A

B

C

D

A

B

C

D

A

B

C

D

A

B

C

D

A

B

C

D

A

B

C

D

A

B

C

D

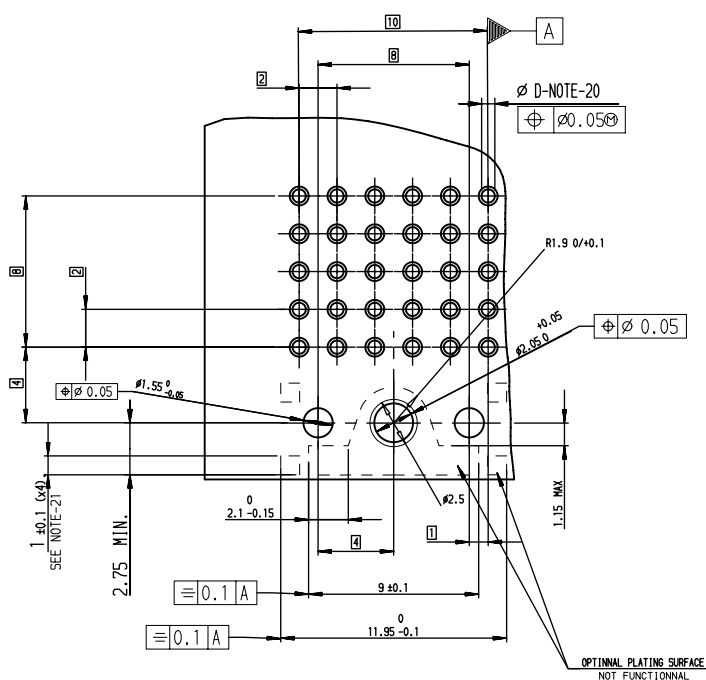
A

B

C

D

RECOMMENDED PCB LAYOUT



NOTE-20: PTH DIMENSIONS - ØD
- DRILL DIAMETER = (0.85 REF) and Plating
- See Product Spec : 65-12-446

NOTE-21: 4 SQUARE REFERENCE PADS

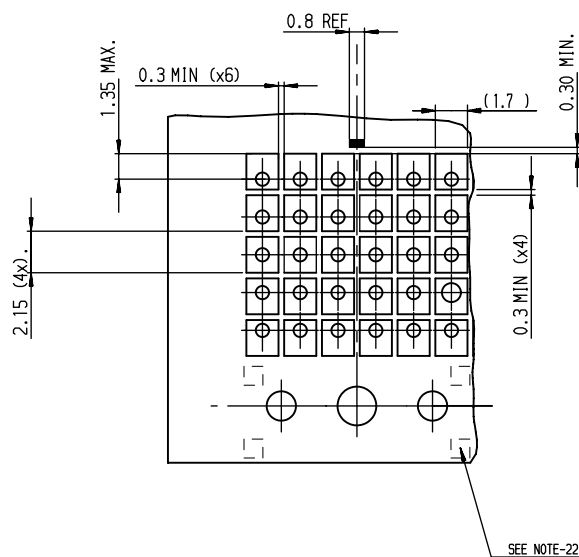
NOTE-22: NO PASTE ALLOWED ON 4 REFERENCE PADS

NOTE-23: PRODUCT REAR SUPPORT LOCATION



NOTE-24: RECOMMENDED PASTE THICKNESS = 0.15

BEV E - 2006-04-17

RECOMMENDED STENCIL LAYOUT



European Views

www.fciconnect.com			surface <input checked="" type="checkbox"/> tolerance std		projection 		mm 	
			ISO 1302 <input checked="" type="checkbox"/> ISO 406 ISO 1101					
			TOLERANCES UNLESS OTHERWISE SPECIFIED					
Dr	VERITE	2007/06/12	ANGULAR	LINEAR	0.X	±0.1	size	A3
Eng	VERITE	2007/06/12			0.XX	±0.1		
Chr	LEGARE	2007/06/12			0.XXX	±0.1		
Appr	LEGARE	2007/06/12	Product family		METRAL		ECN L507-0163	
					Spec ref		-	

3 **PDM: Rev:A** STATUS: **Released** Printed: May 19, 2011