

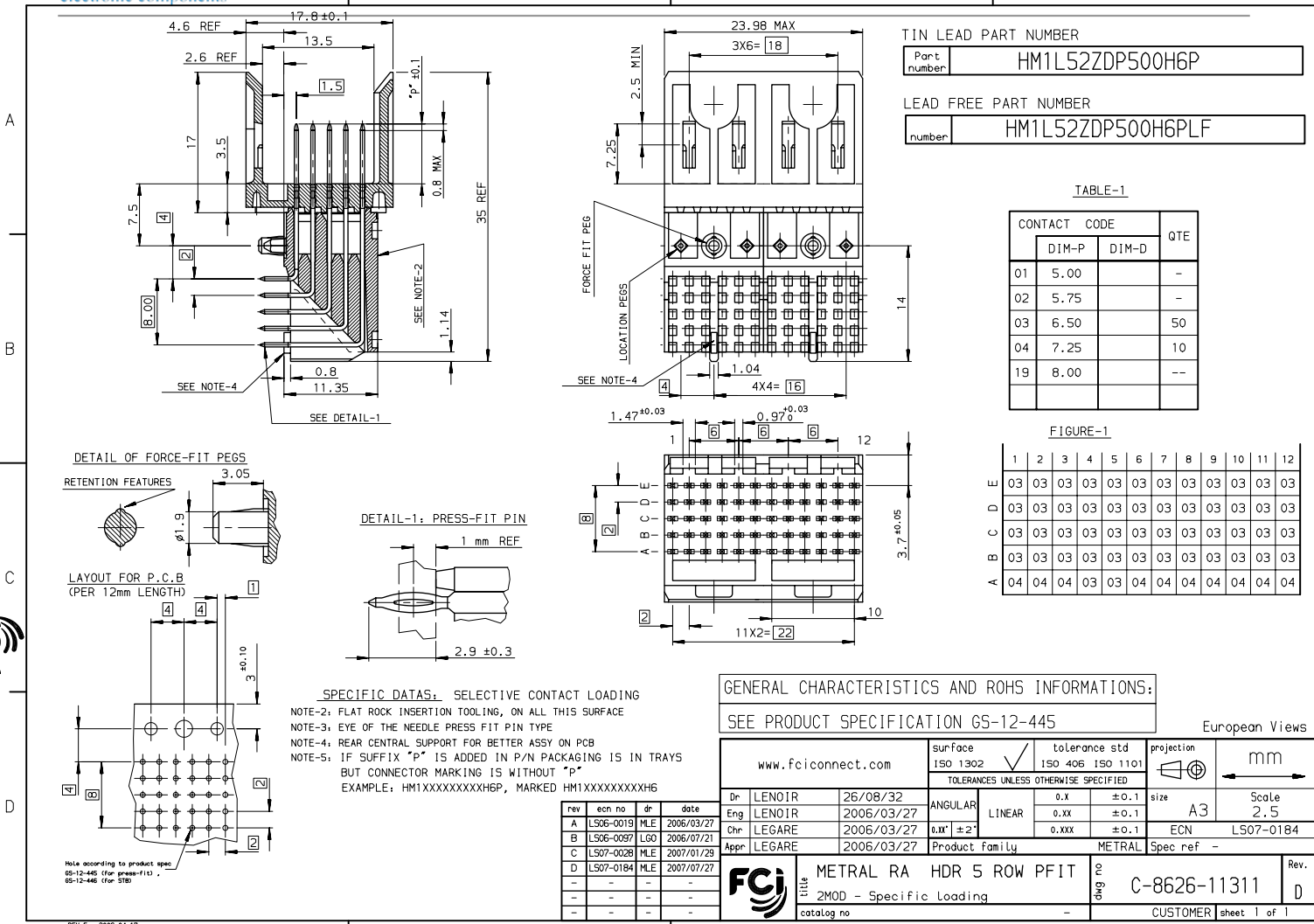
Excellent Integrated System Limited

Stocking Distributor

Click to view price, real time Inventory, Delivery & Lifecycle Information:

[FCI](#)
[HM1L52ZDP500H6PLF](#)

For any questions, you can email us directly:
sales@integrated-circuit.com



TIN LEAD PART NUMBER

Part number	HM1L52ZDP500H6P
-------------	-----------------

LEAD FREE PART NUMBER

number	HM1L52ZDP500H6PLF
--------	-------------------

TABLE-1

	CONTACT CODE		QTE
	DIM-P	DIM-D	
01	5.00		-
02	5.75		-
03	6.50		50
04	7.25		10
19	8.00		--

FIGURE-1

	1	2	3	4	5	6	7	8	9	10	11	12
E	03	03	03	03	03	03	03	03	03	03	03	03
D	03	03	03	03	03	03	03	03	03	03	03	03
C	03	03	03	03	03	03	03	03	03	03	03	03
B	03	03	03	03	03	03	03	03	03	03	03	03
A	04	04	03	03	04	04	04	04	04	04	04	04

SPECIFIC DATAS: SELECTIVE CONTACT LOADING
 NOTE-2: FLAT ROCK INSERTION TOOLING, ON ALL THIS SURFACE
 NOTE-3: EYE OF THE NEEDLE PRESS FIT PIN TYPE
 NOTE-4: REAR CENTRAL SUPPORT FOR BETTER ASSY ON PCB
 NOTE-5: IF SUFFIX "P" IS ADDED IN P/N PACKAGING IS IN TRAYS BUT CONNECTOR MARKING IS WITHOUT "P"
 EXAMPLE: HM1XXXXXXXXH6P, MARKED HM1XXXXXXXXH6

GENERAL CHARACTERISTICS AND ROHS INFORMATIONS:
 SEE PRODUCT SPECIFICATION G5-12-445

European Views

www.fciconnect.com	surface 150 1302 ✓	tolerance std 150 406 ISO 1101	projection 	mm
TOLERANCES UNLESS OTHERWISE SPECIFIED		size A3	Scale 2.5	
Dr LENOIR 26/08/32	ANGULAR	0.X ±0.1	ECN LS07-0184	
Eng LENOIR 2006/03/27	LINEAR	0.XX ±0.1	Spec ref -	
Chr LEGARE 2006/03/27	0.XXX ±2°	0.XXX ±0.1		
Appr LEGARE 2006/03/27	Product family METRAL			

FCI	METRAL RA HDR 5 ROW PFIT	2	C-8626-11311	Rev. D
	2MOD - Specific Loading	1		
catalog no	-	CUSTOMER	sheet 1 of 1	

Copyright FCI.